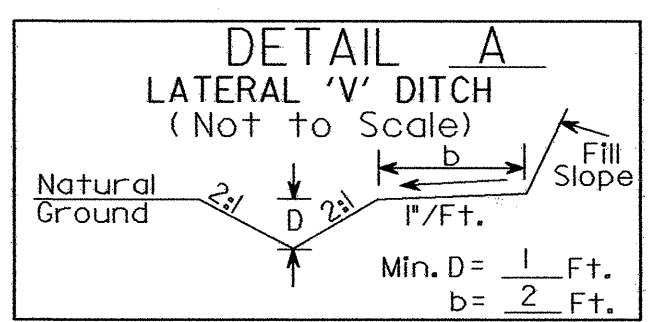


8/17/99
 14-OCT-2003 09:39
 D:\rev\trp\bridge\3470\B3470s04.psh
 B:\blackburn

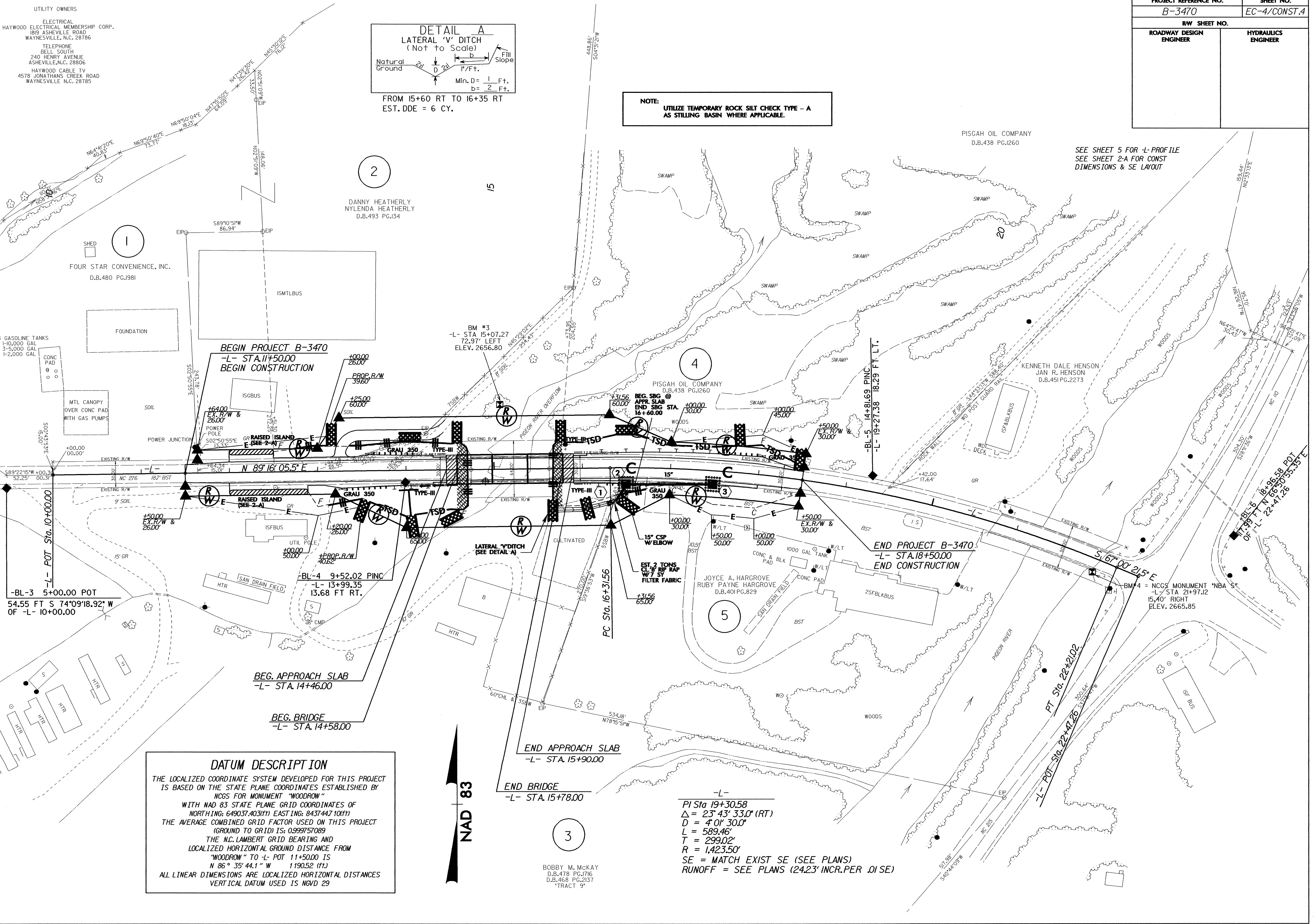
PROJECT REFERENCE NO.		SHEET NO.	
B-3470		EC-4/CONST.4	
RW SHEET NO.			
ROADWAY DESIGN ENGINEER		HYDRAULICS ENGINEER	



FROM I5+60 RT TO I6+35 RT
 EST. DDE = 6 CY.

NOTE: UTILIZE TEMPORARY ROCK SILT CHECK TYPE - A AS STILLING BASIN WHERE APPLICABLE.

SEE SHEET 5 FOR -L- PROFILE
 SEE SHEET 2-A FOR CONST DIMENSIONS & SEE LAYOUT



DATUM DESCRIPTION
 THE LOCALIZED COORDINATE SYSTEM DEVELOPED FOR THIS PROJECT IS BASED ON THE STATE PLANE COORDINATES ESTABLISHED BY NCGS FOR MONUMENT "WOODROW"
 WITH NAD 83 STATE PLANE GRID COORDINATES OF
 NORTHING: 649037.403(FT) EASTING: 8437447.10(FT)
 THE AVERAGE COMBINED GRID FACTOR USED ON THIS PROJECT (GROUND TO GRID) IS: 0.999757089
 THE N.C. LAMBERT GRID BEARING AND LOCALIZED HORIZONTAL GROUND DISTANCE FROM "WOODROW" TO -L- POT 11+50.00 IS
 N 86° 35' 44.1" W 1190.52 (FT)
 ALL LINEAR DIMENSIONS ARE LOCALIZED HORIZONTAL DISTANCES
 VERTICAL DATUM USED IS NGVD 29

-L-
 PI Sta 19+30.58
 $\Delta = 23^\circ 43' 33.0" (RT)$
 $D = 4' 01" 30.0"$
 $L = 589.46'$
 $T = 299.02'$
 $R = 1,423.50'$
 SE = MATCH EXIST SE (SEE PLANS)
 RUNOFF = SEE PLANS (24.23' INCR. PER .01 SE)

BOBBY M. MCKAY
 D.B.478 PG.1716
 D.B.468 PG.2137
 TRACT 9'

NAD 83