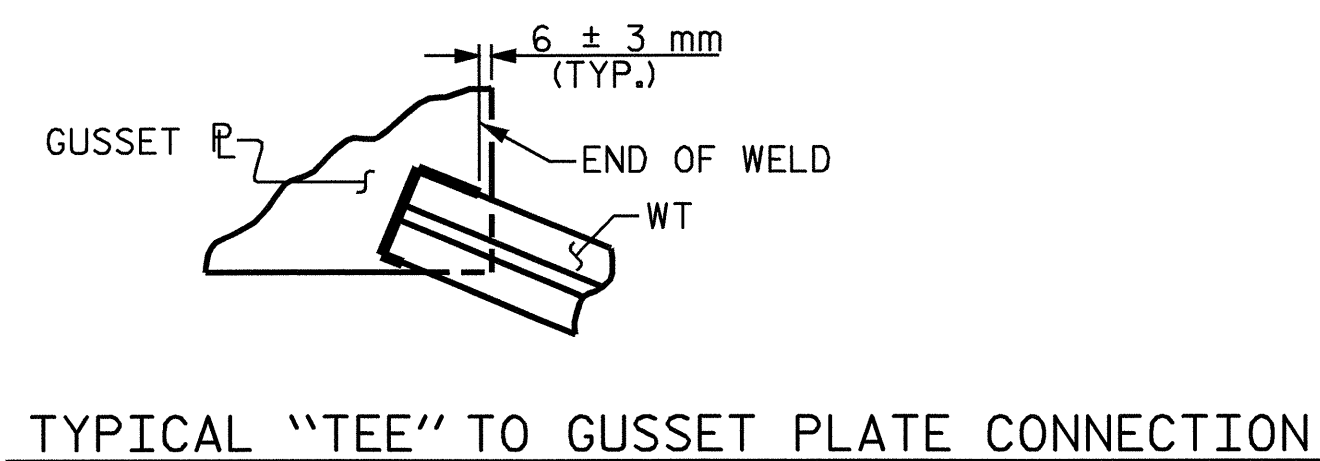
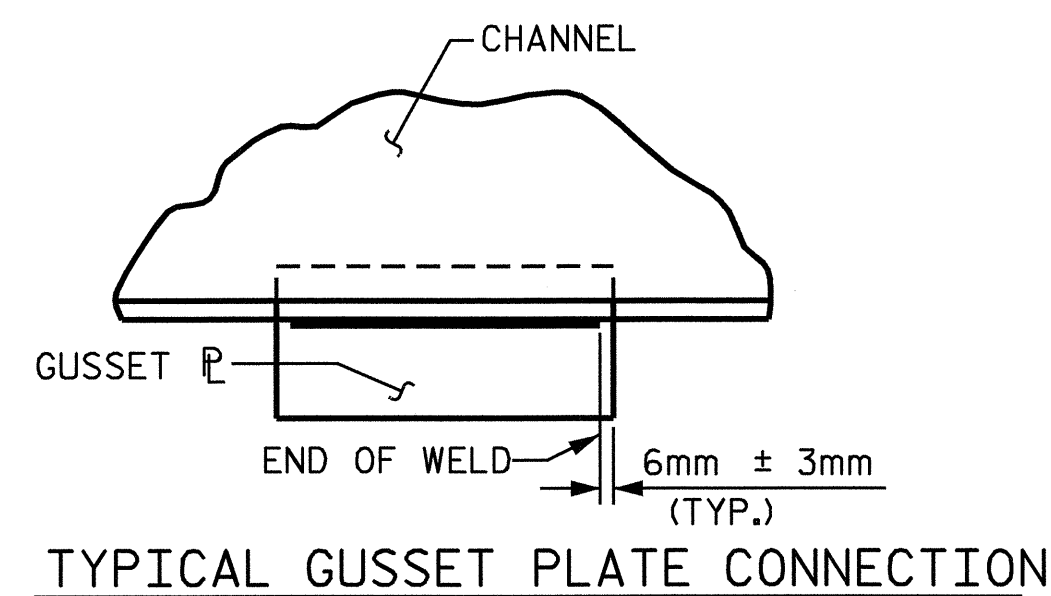


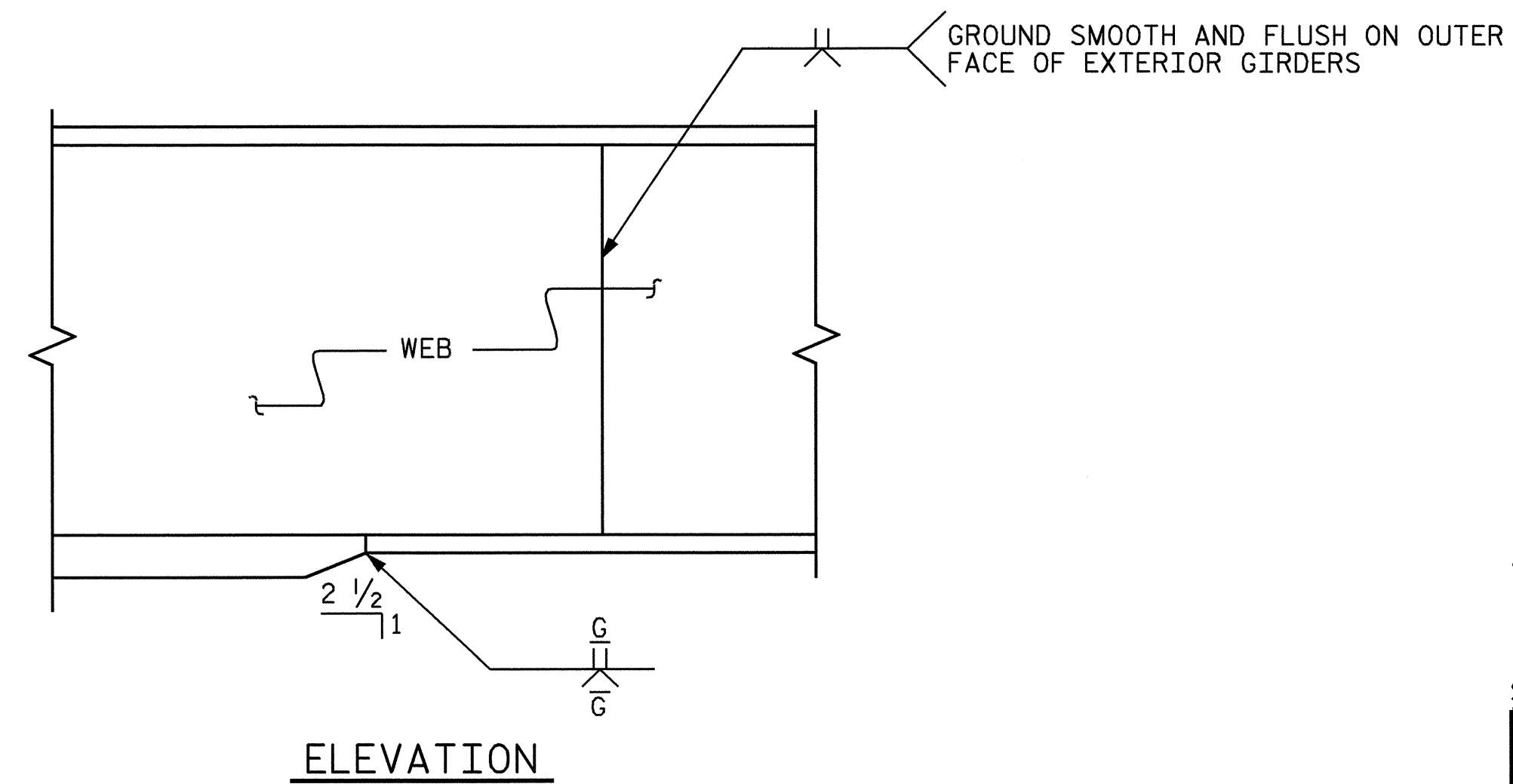
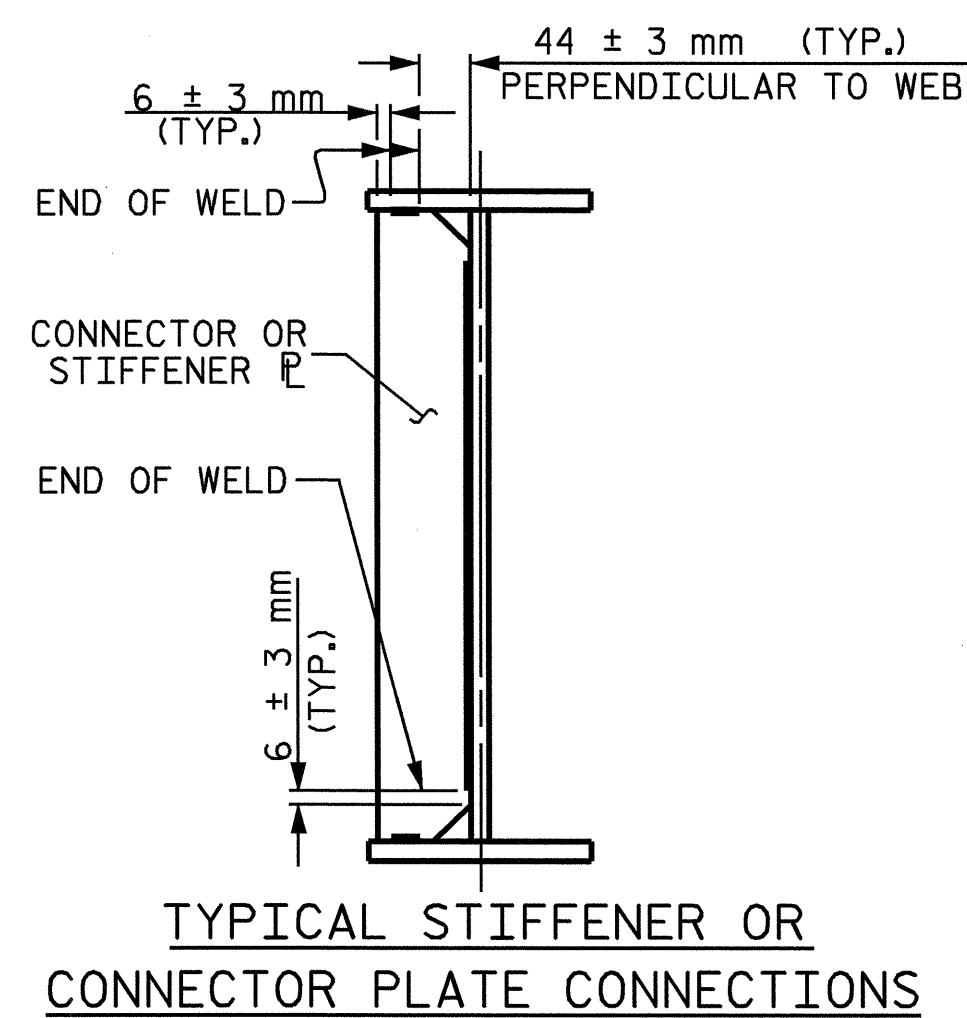
NOTE ① : CHARPY V-NOTCH TESTS ARE REQUIRED FOR ALL TOP OR BOTTOM FLANGE PLATE WHICH FALLS WITHIN THESE LIMITS, ALL WEB PLATES, ALL MEMBERS IN THE DIAPHRAGMS AND ALL SPLICE PLATES. IF A PERMITTED SHOP FLANGE SPLICE IS NOT USED, CHARPY V-NOTCH TESTS WILL BE REQUIRED FOR THE ENTIRE FLANGE PLATE. FOR CHARPY V-NOTCH TESTS, SEE ARTICLE 1072-9 OF THE STANDARD SPECIFICATIONS.

NOTE ② : NO WELDING OF FORM OR FALSEWORK TO THE TOP FLANGE WILL BE PERMITTED IN THIS REGION.

CHARPY V-NOTCH TEST FOR GIRDERS



WELD TERMINATION DETAILS



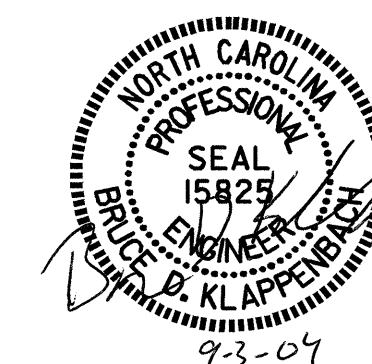
TYPICAL FLANGE AND WEB BUTT JOINTS

PROJECT NO. U-2717
GUILFORD COUNTY
STATION: 40+56.584 -L-

SHEET 3 OF 4

STATE OF NORTH CAROLINA
DEPARTMENT OF TRANSPORTATION
RALEIGH

SUPERSTRUCTURE
STRUCTURAL STEEL
DETAILS



DRAWN BY : M. G. SHAIKH DATE : 7-13-04
CHECKED BY : D. A. GLADDEN DATE : 08-04

REVISIONS						SHEET NO.
NO.	BY:	DATE:	NO.	BY:	DATE:	TOTAL SHEETS
1			3			5-16
2			4			47