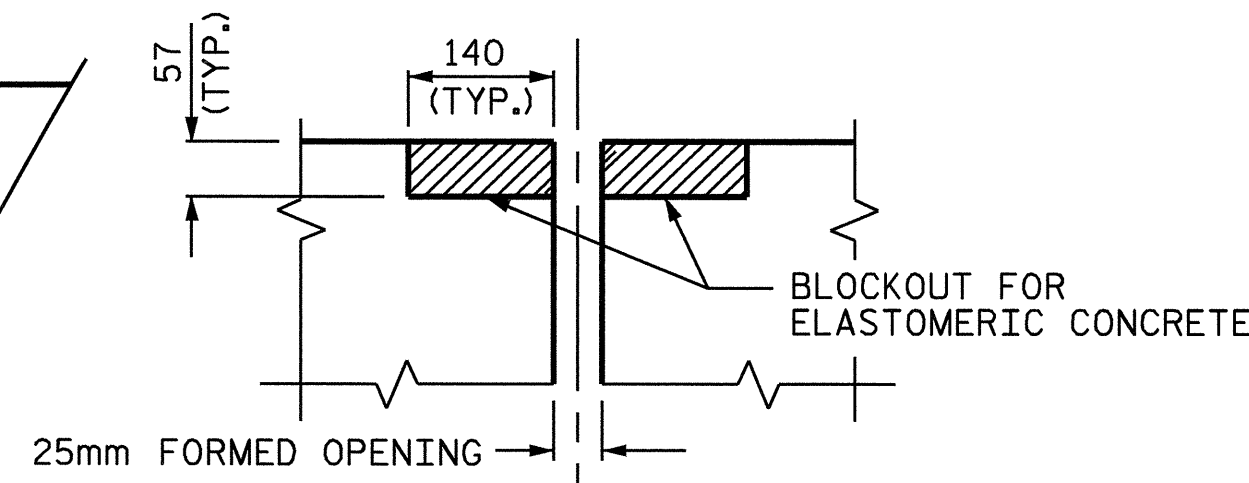
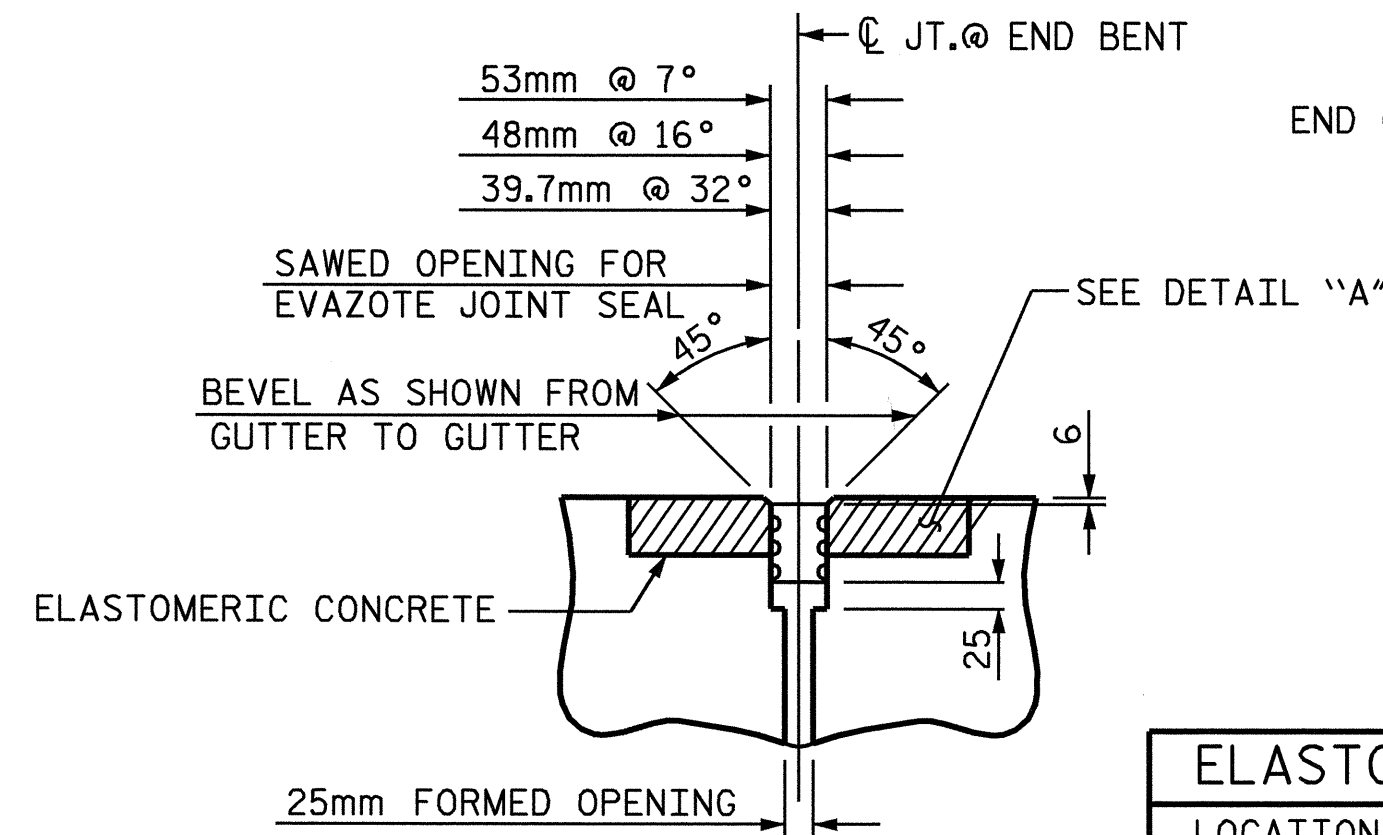


**PLAN VIEW OF EVAZOTE JOINT SEAL @ END BENT FOR SIDEWALK**

(INSERTS AND BOLTS FOR SIDEWALK FLOOR PLATE ARE PLACED ON THE APPROACHING TRAFFIC SIDE OF THE JOINT.)



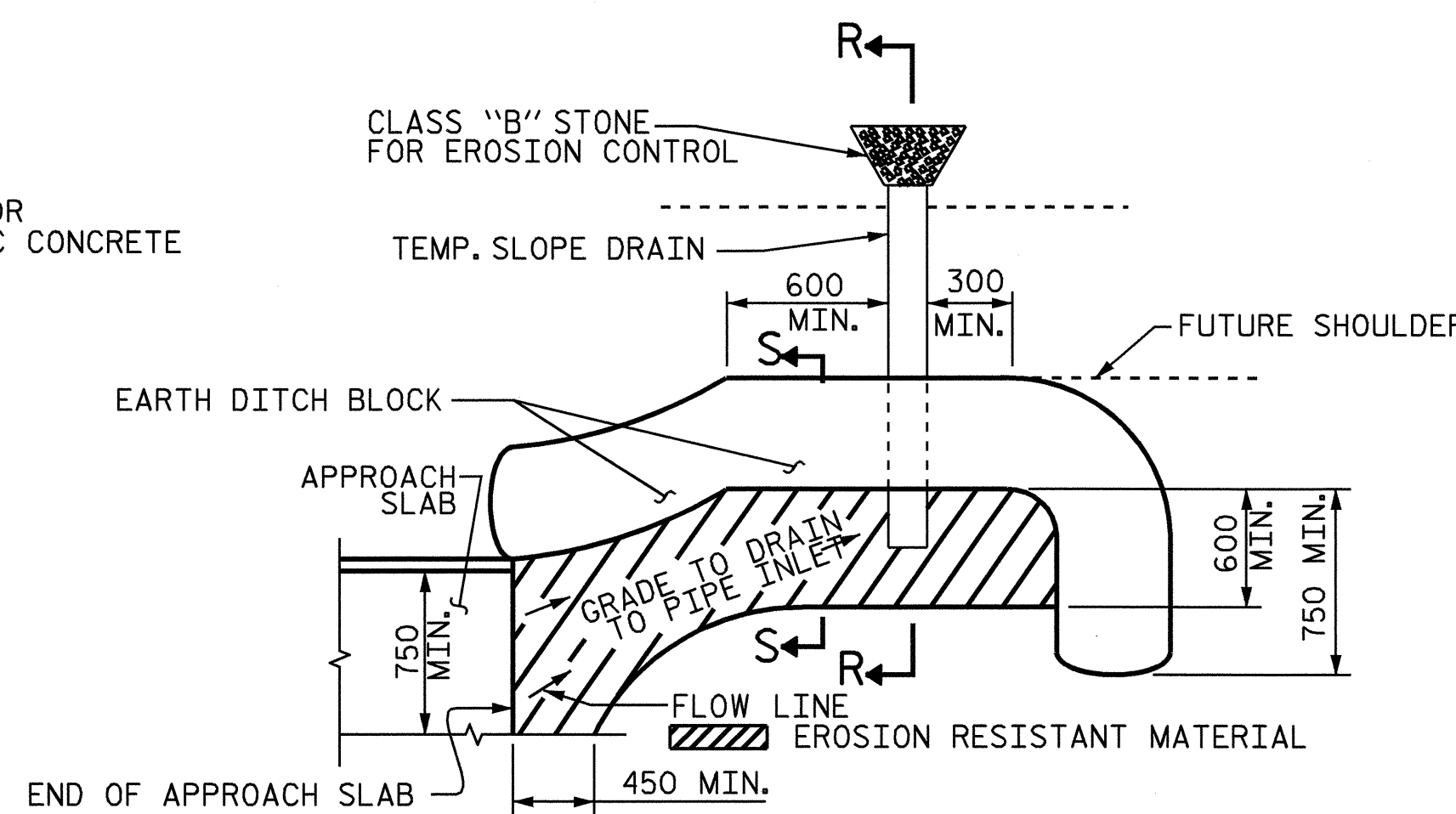
**DETAIL "A"**  
(PRE-SAWED ELASTOMERIC CONCRETE DIMENSIONS)



**SECTION C-C**  
(EVAZOTE JOINT SEAL)

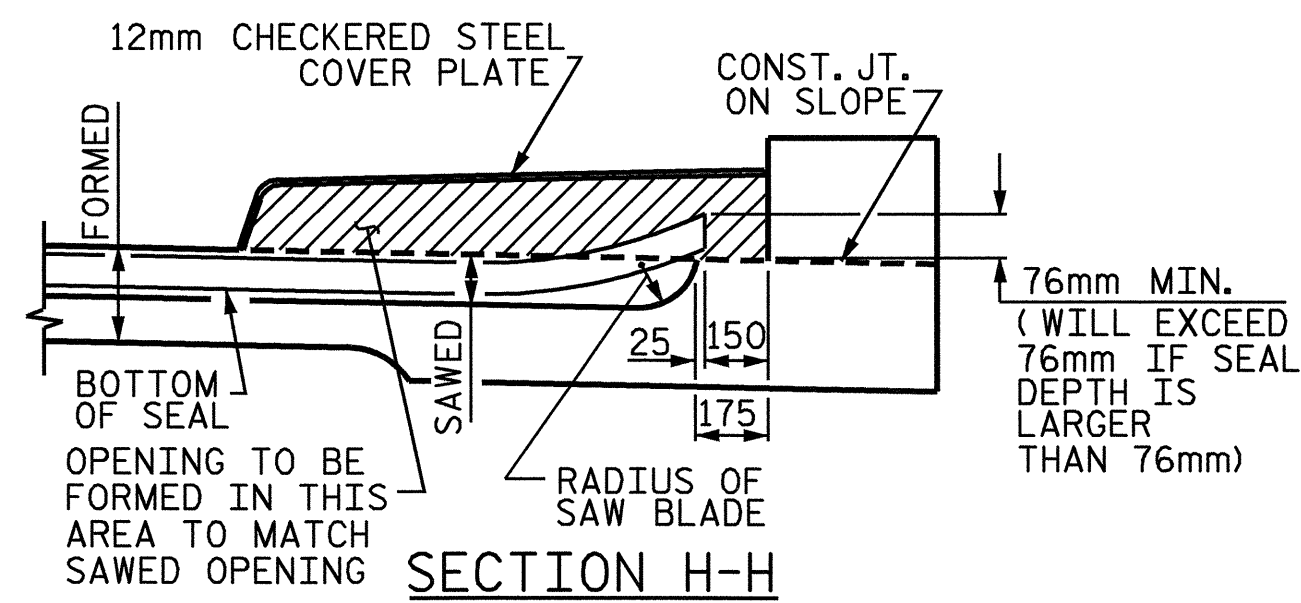
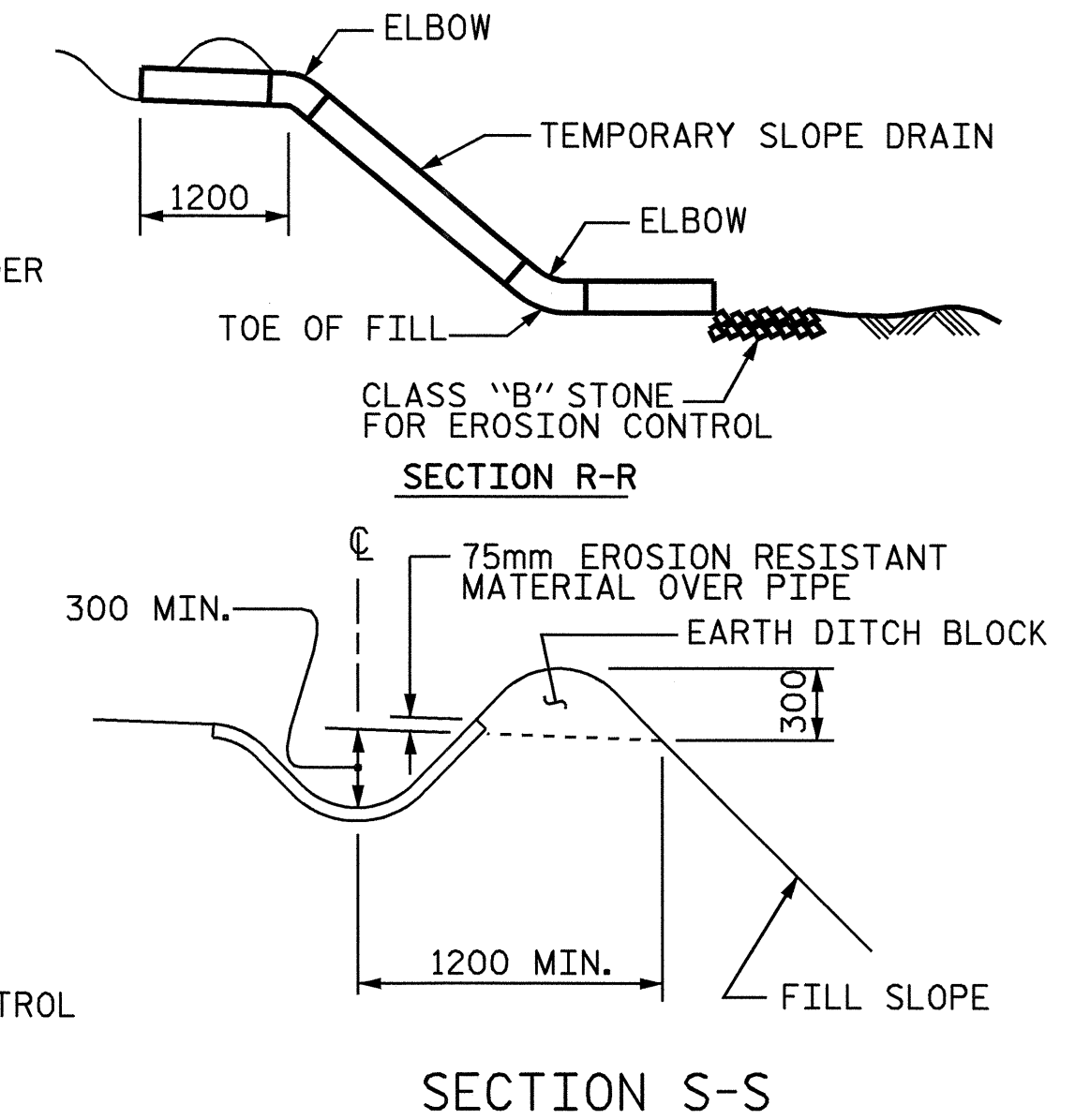
ELASTOMERIC CONCRETE		
LOCATION	ELASTOMERIC CONCRETE * (CU. m)	
	STAGE I	STAGE II
@ E. BT. #1	* 0.224m <sup>3</sup>	* 0.277m <sup>3</sup>
@ E. BT. #2	* 0.224m <sup>3</sup>	* 0.277m <sup>3</sup>

\* BASED ON THE MINIMUM BLOCKOUT SHOWN.

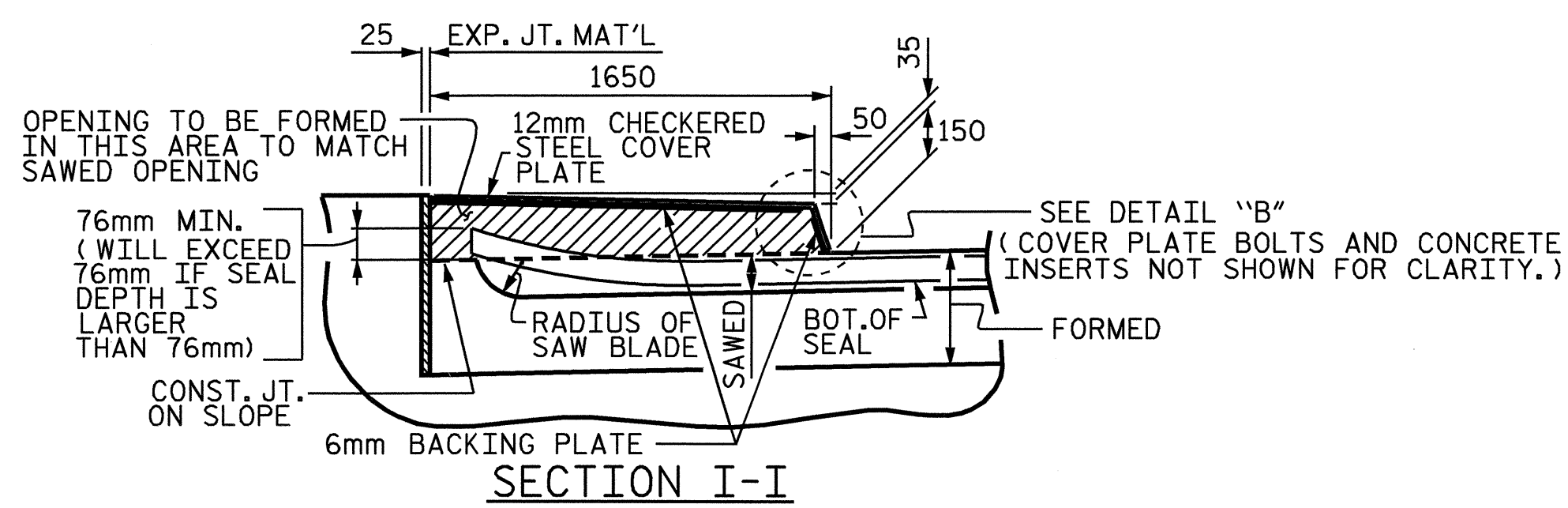


**PLAN VIEW**

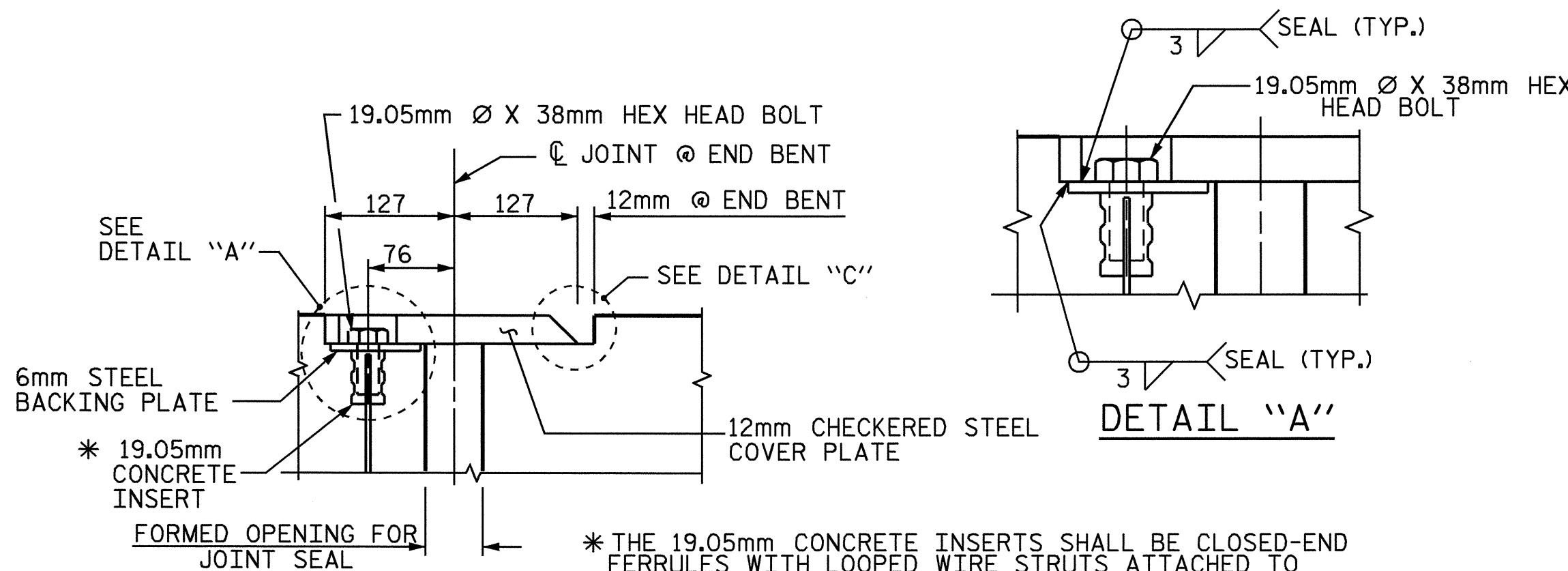
**TEMPORARY BERM AND SLOPE DRAIN DETAILS**



**SECTION H-H**



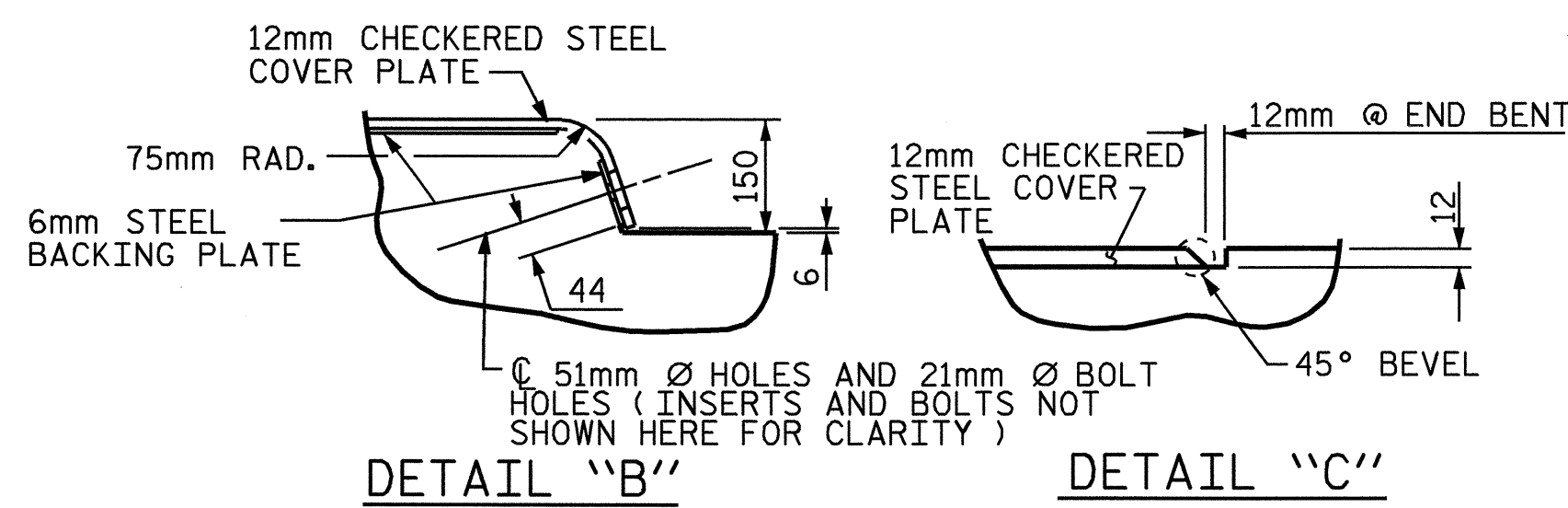
**SECTION I-I**



**SECTION K-K**

**DETAIL "A"**

\* THE 19.05mm CONCRETE INSERTS SHALL BE CLOSED-END FERRULES WITH LOOPED WIRE STRUTS ATTACHED TO THEM. THE INSERTS SHALL CONFORM TO AASHTO M169, GRADE 12L14 AND SHALL HAVE A TENSILE WORKING LOAD CAPACITY OF 13.3 kN.

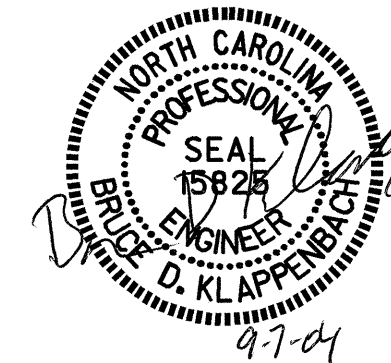


**DETAIL "B"**

**DETAIL "C"**

**JOINT SEAL DETAILS @ END BENT**

(FOR SIDEWALK)



PROJECT NO. U-2717  
CUMBERLAND COUNTY  
STATION: 40+56.584 -L-

SHEET 5 OF 5

STATE OF NORTH CAROLINA  
DEPARTMENT OF TRANSPORTATION  
RALEIGH

**BRIDGE  
APPROACH SLAB  
DETAILS**

REVISIONS					SHEET NO.
NO.	BY:	DATE:	NO.	BY:	DATE:
1			3		
2			4		

STR. #1

STD. NO. BAS10SM

ASSEMBLED BY : J.B. WILSON DATE : 8/04  
CHECKED BY : G.M. PATTERSON DATE : 8/04  
DRAWN BY : FCJ 11/88 REV. 8/16/99 RAL/LES  
CHECKED BY : ARB 11/88 REV. 10/17/00 RWW/LES  
REV. 5/17/03 RWW/JTE