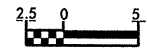




PROJECT REFERENCE NO. U-277	SHEET NO. 6
R/W SHEET NO.	
ROADWAY DESIGN ENGINEER	HYDRAULICS ENGINEER
PRELIMINARY PLANS DO NOT USE FOR CONSTRUCTION	
INCOMPLETE PLANS DO NOT USE FOR R/W ACQUISITION	
CONST. REV. _____	
R/W REV. _____	



-L- PCSta.13+29.250

-L-

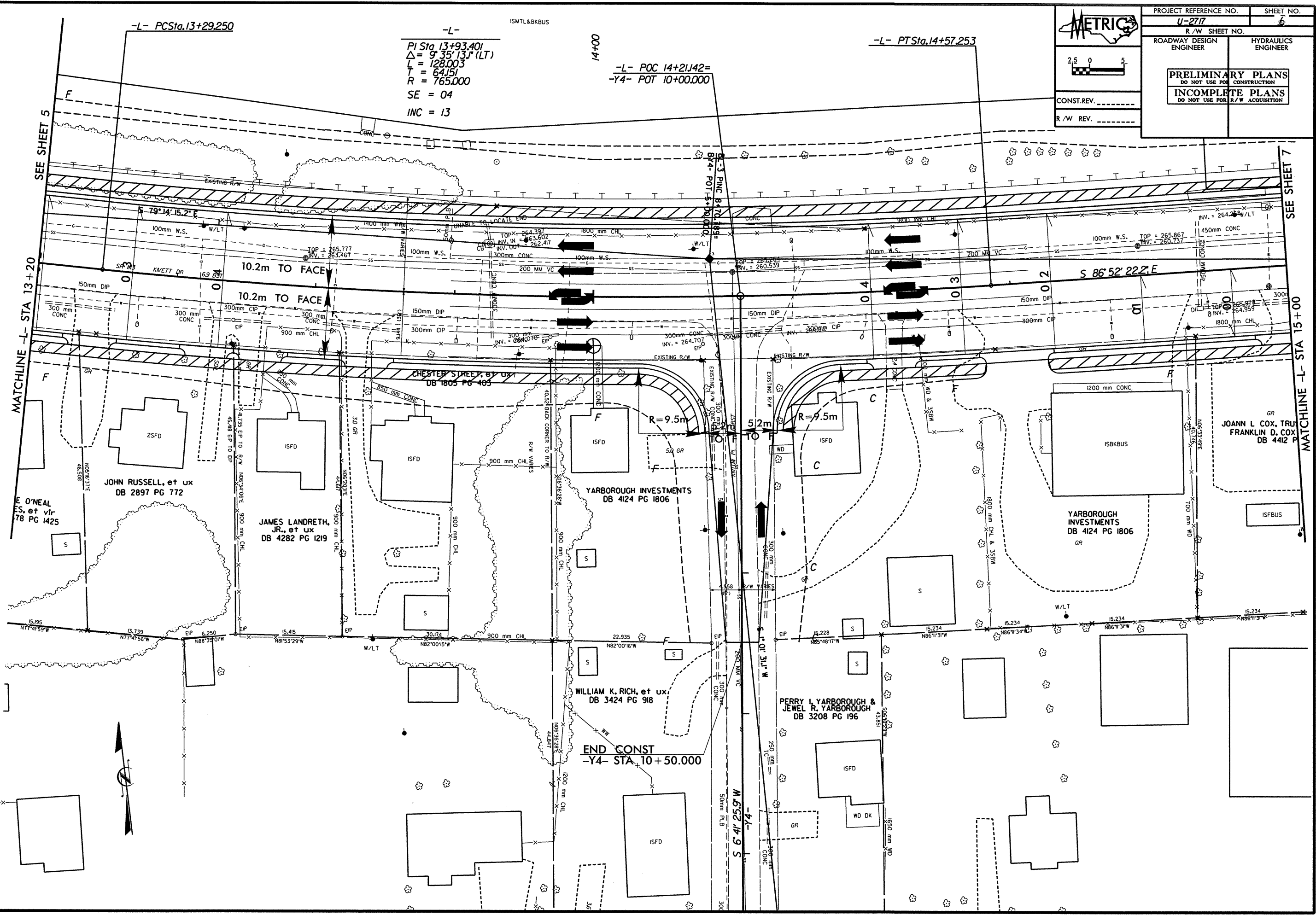
ISMTL & BKBUS

14+00

-L- PTSta.14+57.253

$PI\ Sta\ 13+93.401$
 $\Delta = 9^\circ 35' 13" (LT)$
 $L = 128.003$
 $T = 64.151$
 $R = 765.000$
 $SE = 04$
 $INC = 13$

-L- POC 14+21.142=
 -Y4- POT 10+00.000



SEE SHEET 5

MATCHLINE -L- STA 13+20

SEE SHEET 7

MATCHLINE -L- STA 15+00

E. O'NEAL, et vir DB 78 PG 1425

JOHN RUSSELL, et ux DB 2897 PG 772

JAMES LANDRETH, JR., et ux DB 4282 PG 1219

CHESTER STREET, BY UM DB 1805 PG 485

YARBOROUGH INVESTMENTS DB 4124 PG 1806

WILLIAM K. RICH, et ux DB 3424 PG 918

PERRY L. YARBOROUGH & JEWEL R. YARBOROUGH DB 3208 PG 196

JOANN L. COX, TRU FRANKLIN D. COX DB 4412 P

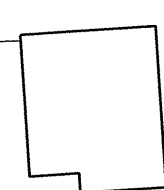
END CONST -Y4- STA. 10+50.000

S 6° 41' 25.9" W

S 86° 52' 22.2" E

R=9.5m

R=9.5m



*****SYSTEMS*****