

S. L. AMOS, JR.
 959 PG 984

C. WAYNE McDONALD CONTRACTOR, INC.
 DB 3722 PG 1972

-Y6-
 PI Sta 10+50.312
 $\Delta = 2' 02' 15.2" (RT)$
 $L = 92.284$
 $T = 46.147$ ISBKBUS
 $R = 2,595.000$

-Y6- PT 10+96.450

BEGIN CONST
 -Y6- STA 10+96.450

-L- POT 18+11.53=
 -Y6- POT 11+48.949
 -Y7A- PCSta.9+98.938
 ALVIN G. COPE, et ux
 DB 2558 PG 269
 DB 2908 PG 617

MUHAMMAD ILYAS
 DB 4481 PG 1604
 DB 4205 PG 1978

JAMES R. FRASER
 DB 2857 PG 319

AUBREY C. JONES
 DB 2114 PG 453

JEWEL C. CRUTHIS
 DB 4493 PG 428

JOHN T. MCKENZIE
 DB 4296 PG 556
 DB 4598 PG 1092

JESSE L. KNIGHT, et ux
 DB 1938 PG 103

MONTGOMERY INVESTMENTS
 DB 3792 PG 1125

BARRY L. KNIGHT
 DB 3299 PG 392

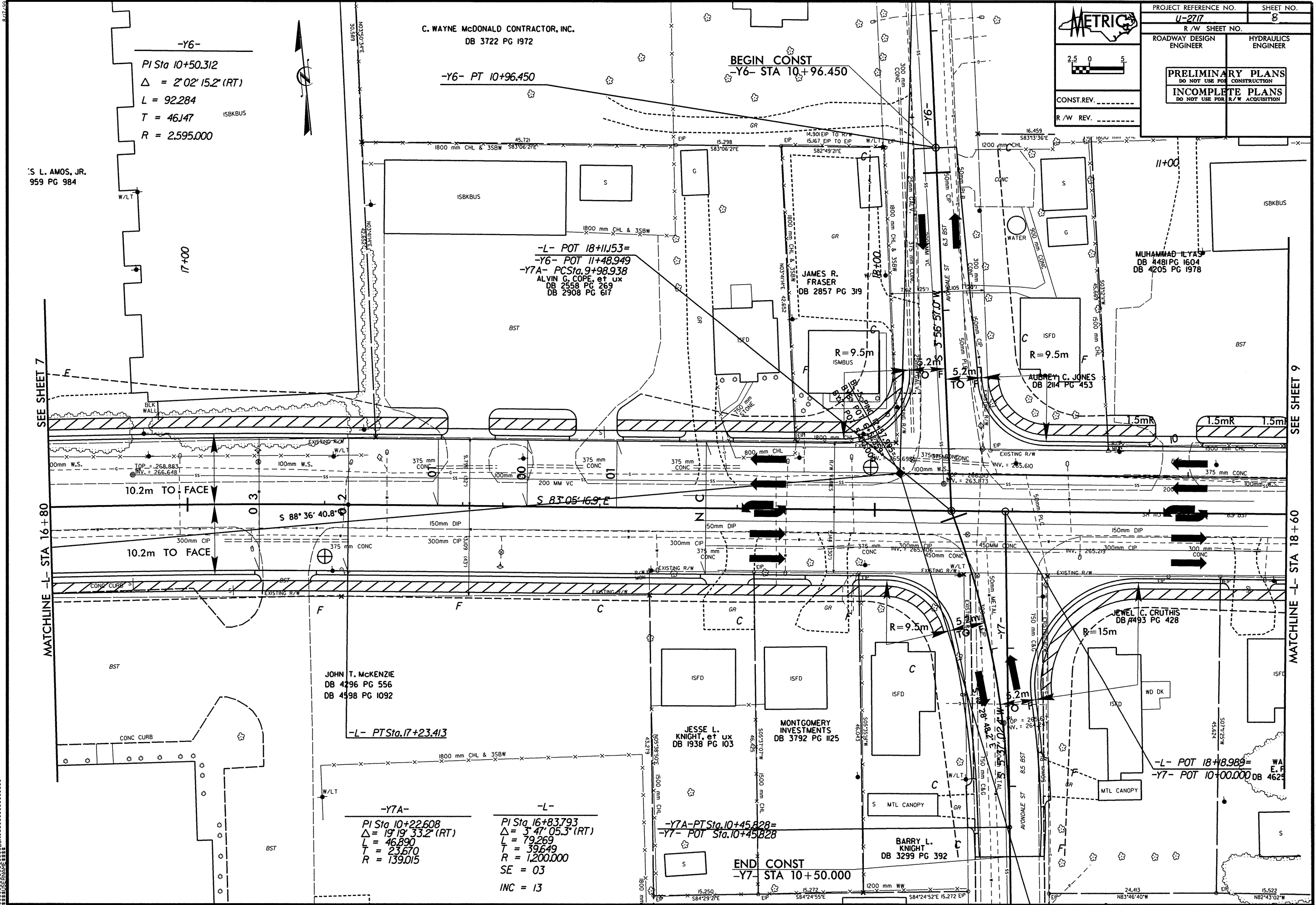
-L- PTSta.17+23.413

-Y7A-
 PI Sta 10+22.608
 $\Delta = 19' 19' 33.2" (RT)$
 $L = 46.890$
 $T = 23.670$
 $R = 1,390.015$

-L-
 PI Sta 16+83.793
 $\Delta = 3' 47' 05.3" (RT)$
 $L = 79.269$
 $T = 39.649$
 $R = 1,200.000$
 SE = 03
 INC = 13

-Y7A-PTSta.10+45.828=
 -Y7- POT Sta.10+45.828

END CONST
 -Y7- STA 10+50.000



SEE SHEET 7

MATCHLINE -L- STA 16+80

SEE SHEET 9

MATCHLINE -L- STA 18+60

*****SYSTEMS*****
 *****SERIALS*****
 *****SERIALS*****