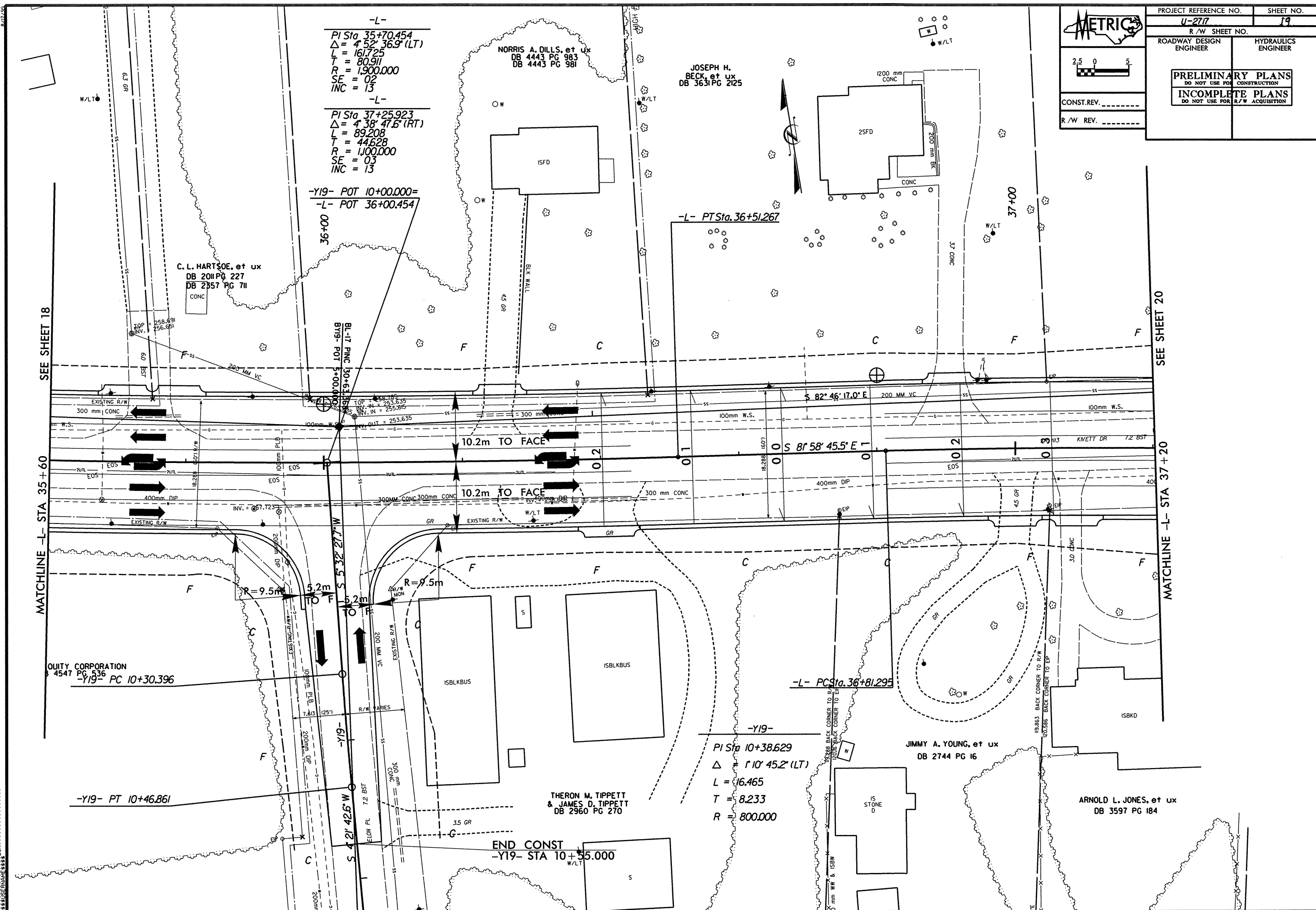
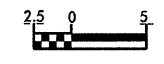


PROJECT REFERENCE NO. U-2717		SHEET NO. 19	
R/W SHEET NO.			
ROADWAY DESIGN ENGINEER		HYDRAULICS ENGINEER	
PRELIMINARY PLANS DO NOT USE FOR CONSTRUCTION INCOMPLETE PLANS DO NOT USE FOR R/W ACQUISITION			
CONST. REV. _____		R/W REV. _____	



-L-
 PI Sta 35+70.454
 $\Delta = 4' 52' 36.9''$ (LT)
 $L = 161.725$
 $T = 80.911$
 $R = 1,900.000$
 $SE = 02$
 $INC = 13$

-L-
 PI Sta 37+25.923
 $\Delta = 4' 38' 47.6''$ (RT)
 $L = 89.208$
 $T = 44.628$
 $R = 1,100.000$
 $SE = 03$
 $INC = 13$

-Y19- POT 10+00.000=
 -L- POT 36+00.454

C. L. HARTSOE, et ux
 DB 2011 PG 227
 DB 2357 PG 711

NORRIS A. DILLS, et ux
 DB 4443 PG 983
 DB 4443 PG 981

JOSEPH H. BECK, et ux
 DB 3631 PG 2125

SEE SHEET 18

MATCHLINE -L- STA 35+60

SEE SHEET 20

MATCHLINE -L- STA 37+20

QUALITY CORPORATION
 4547 PG 536
 -Y19- PC 10+30.396

-Y19- PT 10+46.861

THON M. TIPPETT & JAMES D. TIPPETT
 DB 2960 PG 270

END CONST
 -Y19- STA 10+55.000

-Y19-
 PI Sta 10+38.629
 $\Delta = 1' 10' 45.2''$ (LT)
 $L = 16.465$
 $T = 8.233$
 $R = 800.000$

JIMMY A. YOUNG, et ux
 DB 2744 PG 16

ARNOLD L. JONES, et ux
 DB 3597 PG 184

*****SYSTIME*****
 *****EDUCATION*****
 *****SOFTWARE*****
 *****SERIAL*****