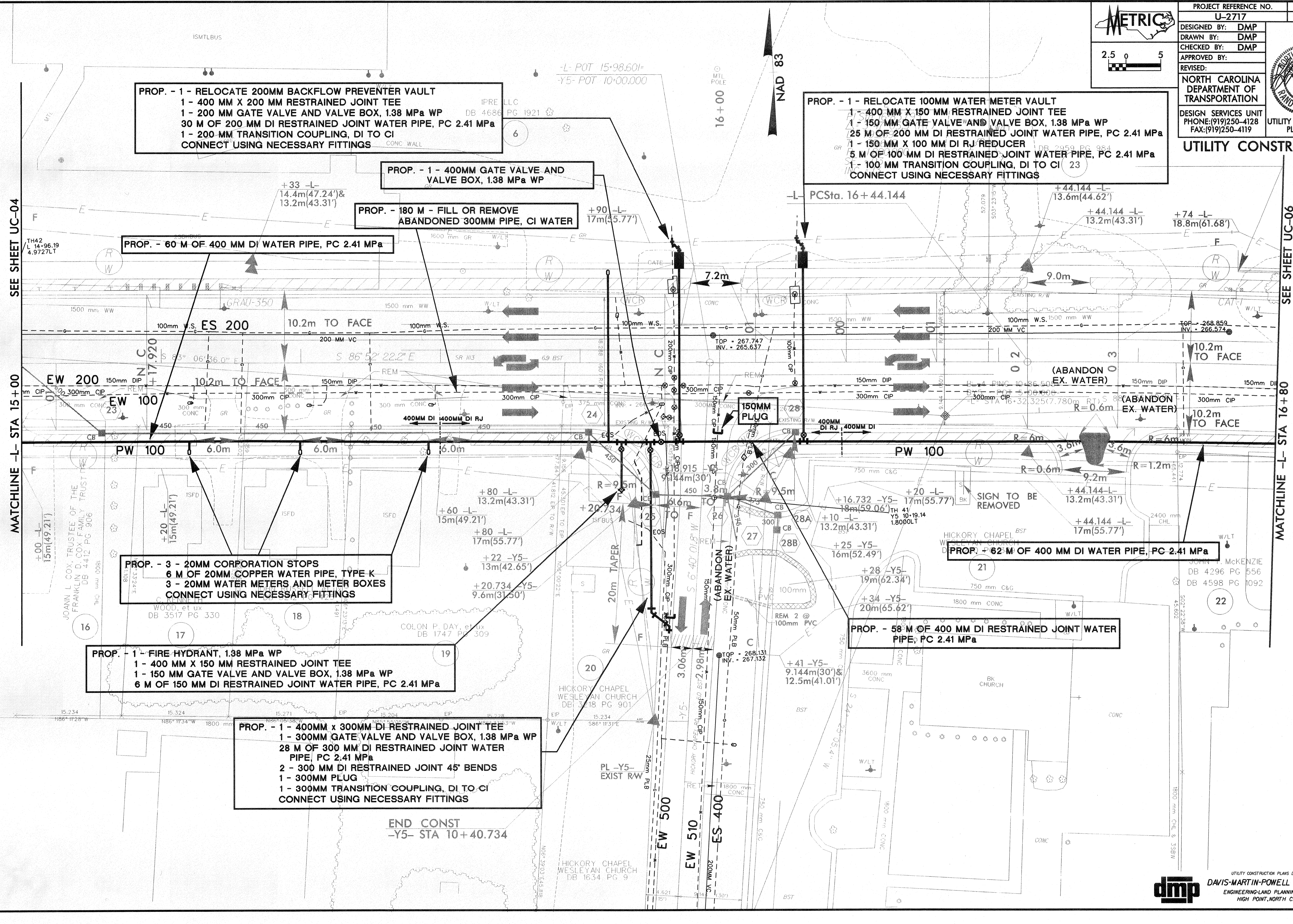


PROJECT REFERENCE NO.	U-2717	SHEET NO.	UC-05
DESIGNED BY:	DMP		
DRAWN BY:	DMP		
CHECKED BY:	DMP		
APPROVED BY:			
REVISED:			
NORTH CAROLINA DEPARTMENT OF TRANSPORTATION			
DESIGN SERVICES UNIT PHONE: (919) 250-4128 FAX: (919) 250-4119			
UTILITY CONSTRUCTION PLANS ONLY			



PROP. - 1 - RELOCATE 200MM BACKFLOW PREVENTER VAULT  
 1 - 400 MM X 200 MM RESTRAINED JOINT TEE  
 1 - 200 MM GATE VALVE AND VALVE BOX, 1.38 MPa WP  
 30 M OF 200 MM DI RESTRAINED JOINT WATER PIPE, PC 2.41 MPa  
 1 - 200-MM TRANSITION COUPLING, DI TO CI  
 CONNECT USING NECESSARY FITTINGS

PROP. - 1 - 400MM GATE VALVE AND VALVE BOX, 1.38 MPa WP

PROP. - 180 M - FILL OR REMOVE ABANDONED 300MM PIPE, CI WATER

PROP. - 60 M OF 400 MM DI WATER PIPE, PC 2.41 MPa

PROP. - 1 - RELOCATE 100MM WATER METER VAULT  
 1 - 400 MM X 150 MM RESTRAINED JOINT TEE  
 1 - 150 MM GATE VALVE AND VALVE BOX, 1.38 MPa WP  
 25 M OF 200 MM DI RESTRAINED JOINT WATER PIPE, PC 2.41 MPa  
 1 - 150 MM X 100 MM DI RJ REDUCER  
 5 M OF 100-MM DI RESTRAINED JOINT WATER PIPE, PC 2.41 MPa  
 1 - 100-MM TRANSITION COUPLING, DI TO CI  
 CONNECT USING NECESSARY FITTINGS

PROP. - 3 - 20MM CORPORATION STOPS  
 6 M OF 20MM COPPER WATER PIPE, TYPE K  
 3 - 20MM WATER METERS AND METER BOXES  
 CONNECT USING NECESSARY FITTINGS

PROP. - 1 - FIRE HYDRANT, 1.38 MPa WP  
 1 - 400 MM X 150 MM RESTRAINED JOINT TEE  
 1 - 150 MM GATE VALVE AND VALVE BOX, 1.38 MPa WP  
 6 M OF 150 MM DI RESTRAINED JOINT WATER PIPE, PC 2.41 MPa

PROP. - 1 - 400MM X 300MM DI RESTRAINED JOINT TEE  
 1 - 300MM GATE VALVE AND VALVE BOX, 1.38 MPa WP  
 28 M OF 300 MM DI RESTRAINED JOINT WATER PIPE, PC 2.41 MPa  
 2 - 300 MM DI RESTRAINED JOINT 45° BENDS  
 1 - 300MM PLUG  
 1 - 300MM TRANSITION COUPLING, DI TO CI  
 CONNECT USING NECESSARY FITTINGS

PROP. - 58 M OF 400 MM DI RESTRAINED JOINT WATER PIPE, PC 2.41 MPa

PROP. - 62 M OF 400 MM DI WATER PIPE, PC 2.41 MPa

END CONST  
 -Y5- STA 10+40.734