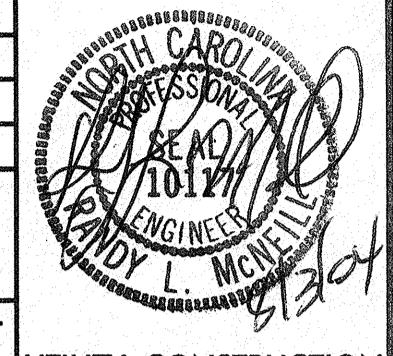
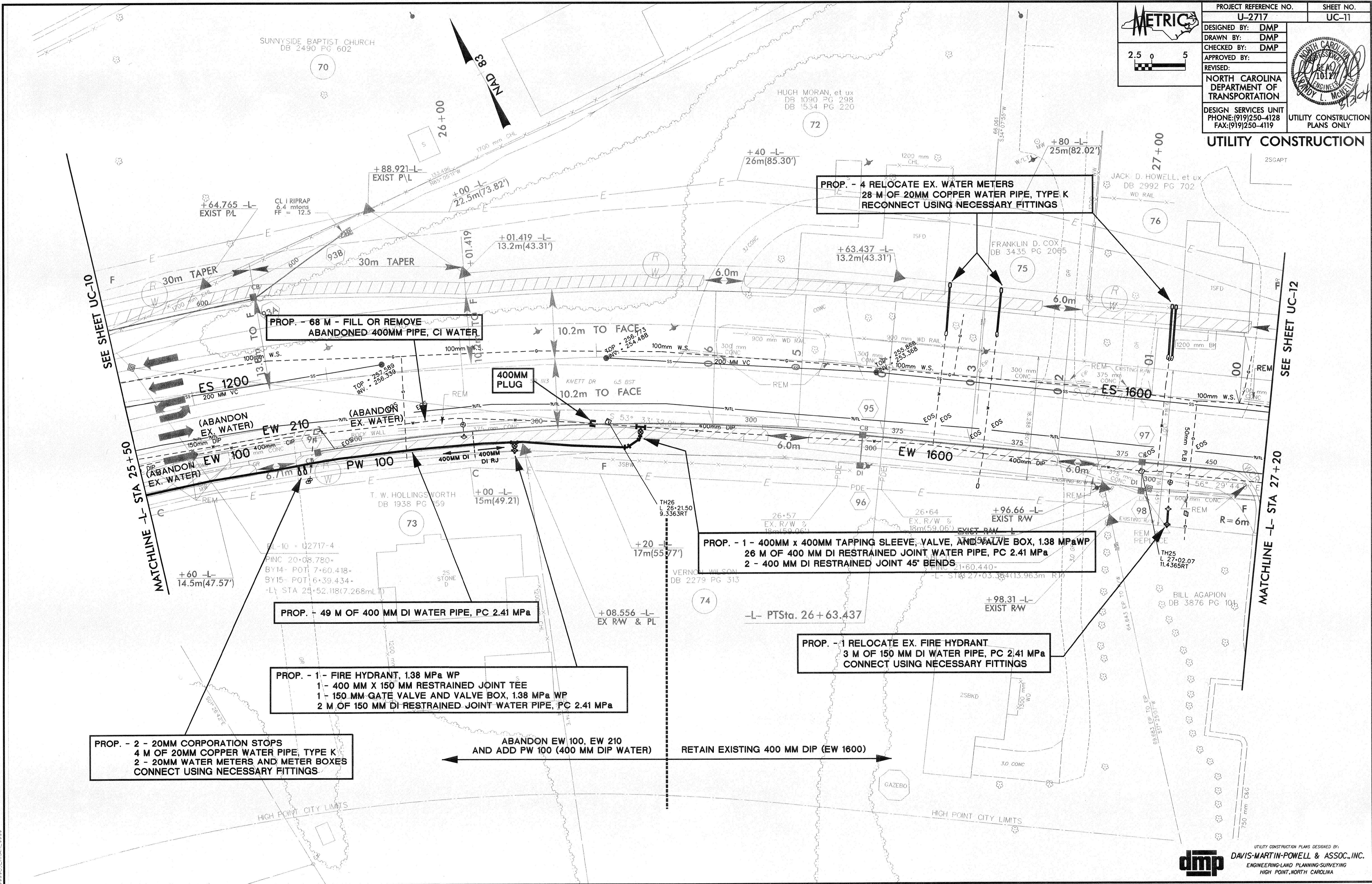
 2.5 0 5	PROJECT REFERENCE NO.	U-2717	SHEET NO.	UC-11
	DESIGNED BY:	DMP		
	DRAWN BY:	DMP		
	CHECKED BY:	DMP		
	APPROVED BY:			
REVISED:				
NORTH CAROLINA DEPARTMENT OF TRANSPORTATION				
DESIGN SERVICES UNIT PHONE: (919) 250-4128 FAX: (919) 250-4119			UTILITY CONSTRUCTION PLANS ONLY	

UTILITY CONSTRUCTION



**PROP. - 4 RELOCATE EX. WATER METERS
28 M OF 20MM COPPER WATER PIPE, TYPE K
RECONNECT USING NECESSARY FITTINGS**

**PROP. - 68 M - FILL OR REMOVE
ABANDONED 400MM PIPE, CI WATER**

**400MM
PLUG**

**PROP. - 1 - 400MM x 400MM TAPPING SLEEVE, VALVE, AND VALVE BOX, 138 MPa WP
26 M OF 400 MM DI RESTRAINED JOINT WATER PIPE, PC 2.41 MPa
2 - 400 MM DI RESTRAINED JOINT 45° BENDS**

PROP. - 49 M OF 400 MM DI WATER PIPE, PC 2.41 MPa

**PROP. - 1 RELOCATE EX. FIRE HYDRANT
3 M OF 150 MM DI WATER PIPE, PC 2.41 MPa
CONNECT USING NECESSARY FITTINGS**

**PROP. - 1 - FIRE HYDRANT, 138 MPa WP
1 - 400 MM X 150 MM RESTRAINED JOINT TEE
1 - 150 MM GATE VALVE AND VALVE BOX, 138 MPa WP
2 M OF 150 MM DI RESTRAINED JOINT WATER PIPE, PC 2.41 MPa**

**PROP. - 2 - 20MM CORPORATION STOPS
4 M OF 20MM COPPER WATER PIPE, TYPE K
2 - 20MM WATER METERS AND METER BOXES
CONNECT USING NECESSARY FITTINGS**

**ABANDON EW 100, EW 210
AND ADD PW 100 (400 MM DIP WATER)**

RETAIN EXISTING 400 MM DIP (EW 1600)

SEE SHEET UC-10

SEE SHEET UC-12

MATCHLINE -L- STA 25+50

MATCHLINE -L- STA 27+20