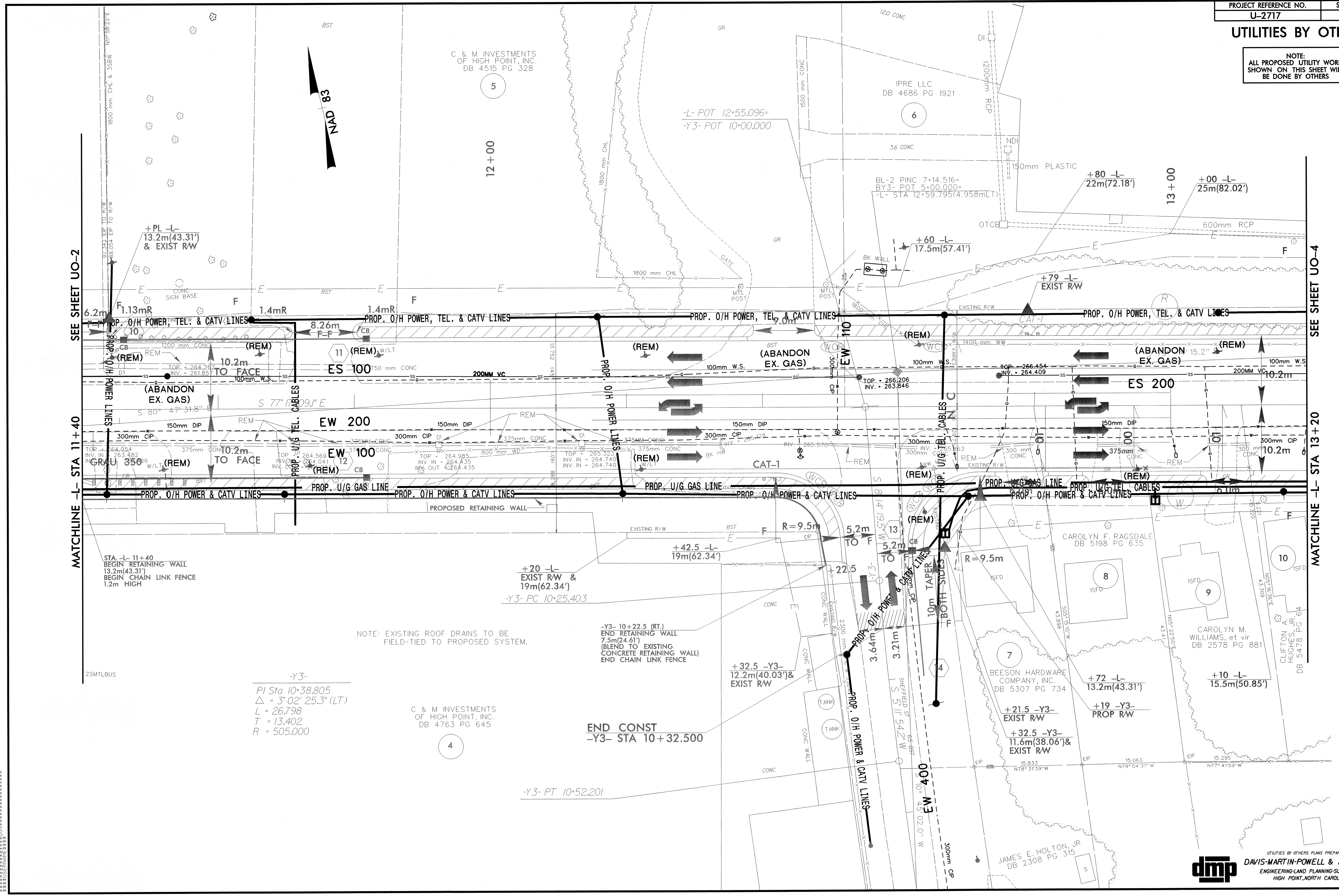


### UTILITIES BY OTHERS

NOTE:  
ALL PROPOSED UTILITY WORK  
SHOWN ON THIS SHEET WILL  
BE DONE BY OTHERS



-Y3-  
PI Sta 10+38.805  
 $\Delta = 3^{\circ}02'25.3''$  (LT)  
L = 26.798  
T = 13.402  
R = 505.000

C & M INVESTMENTS  
OF HIGH POINT, INC.  
DB 4763 PG 645

END CONST  
-Y3- STA 10+32.500