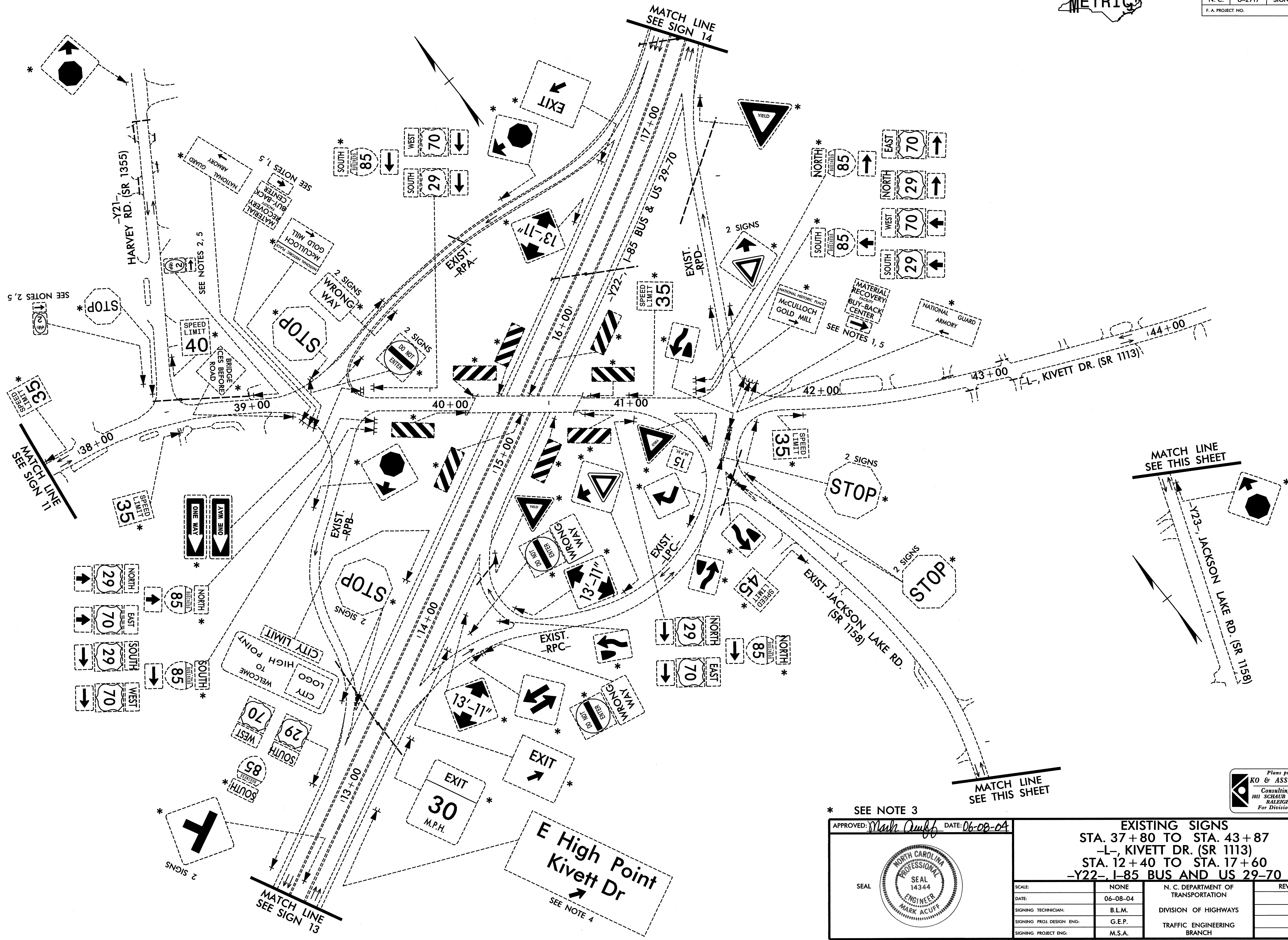




STATE	PROJECT NO.	SHEET NO.	TOTAL SHTS.
N. C.	U-2717	SIGN 12	
F. A. PROJECT NO.			



\* SEE NOTE 3  
 APPROVED: *Mark Acuff* DATE: 06-08-04



EXISTING SIGNS STA. 37+80 TO STA. 43+87 -L-, KIVETT DR. (SR 1113) STA. 12+40 TO STA. 17+60 -Y22-, I-85 BUS AND US 29-70		REVISIONS	
SCALE:	NONE	N. C. DEPARTMENT OF TRANSPORTATION	
DATE:	06-08-04	DIVISION OF HIGHWAYS	
SIGNING TECHNICIAN:	B.L.M.	TRAFFIC ENGINEERING BRANCH	
SIGNING PROJ. DESIGN ENG.:	G.E.P.		
SIGNING PROJECT ENG.:	M.S.A.		

Plans prepared by:  
**KO & ASSOCIATES, P.C.**  
 Consulting Engineers  
 101 SCHAUB DR., SUITE #202  
 RALEIGH, N.C. 27606  
 For Division of Highways

P:\SIGNING\U-2717\002\PLANS\ESDS.dgn  
 05/26/2004 10:59:16 AM