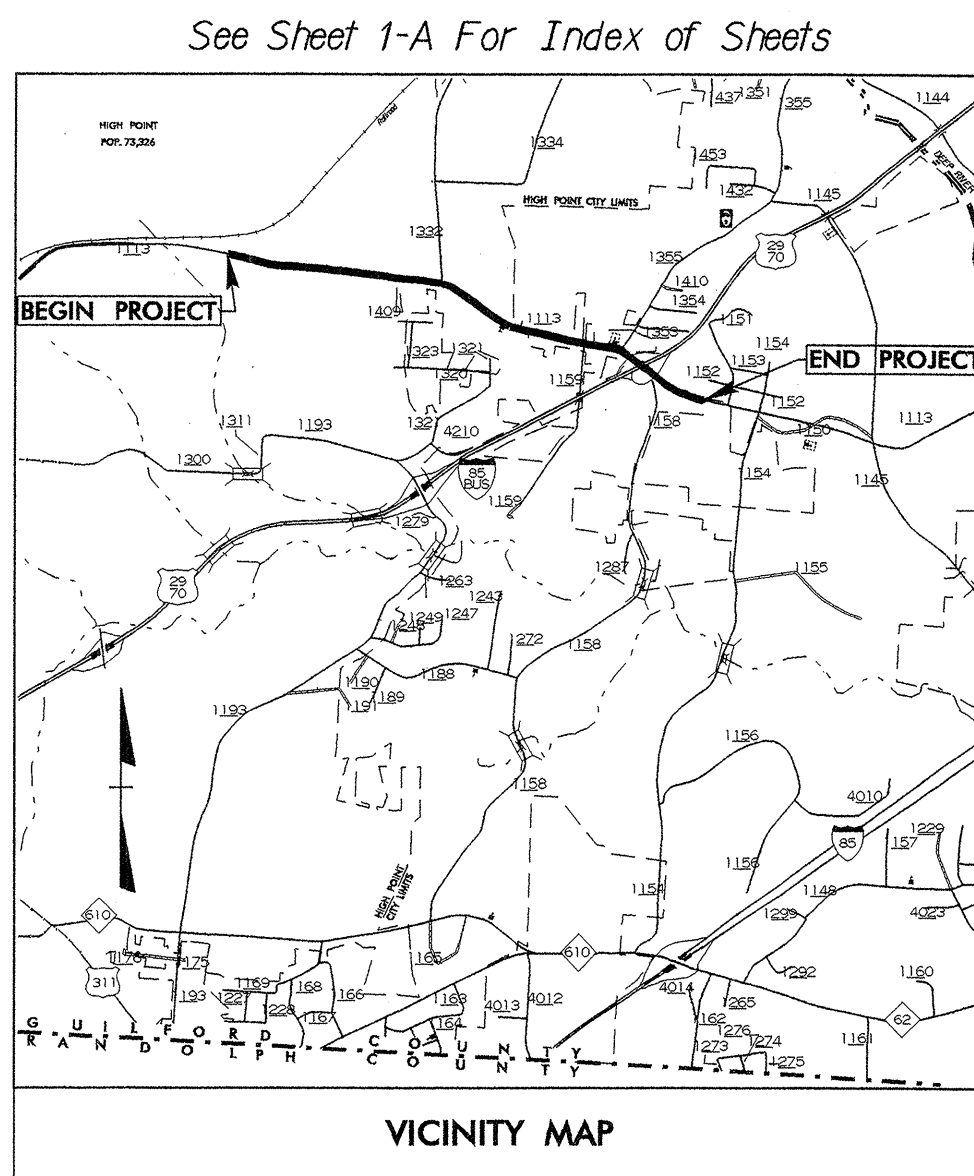


09/09/09

TIP: U-2717

PROJECT: C201009



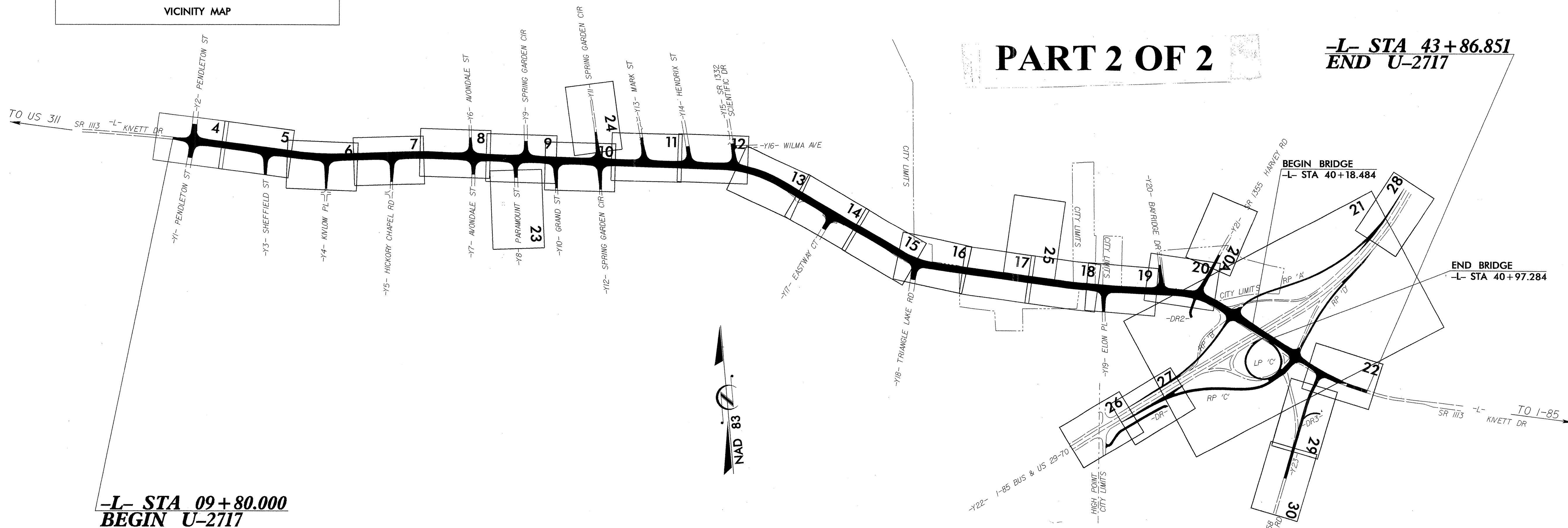
STATE OF NORTH CAROLINA  
DIVISION OF HIGHWAYS

**GUILFORD COUNTY**

LOCATION: HIGH POINT - SR 113(KIVETT DRIVE) FROM  
PENDLETON ST. TO US 29-70, I-85 BUS

TYPE OF WORK: GRADING, DRAINAGE, PAVING, SIGNALS, SIDEWALK  
AND STRUCTURES.

<p>ALL DIMENSIONS IN THESE PLANS ARE IN METERS AND/OR MILLIMETERS UNLESS OTHERWISE SHOWN</p>	STATE PROJECT REFERENCE NO.	SHEET NO.	TOTAL SHEETS
	N.C. U-2717	1	
	STATE PROJ. NO.	F.A. PROJ. NO.	DESCRIPTION
34850.1.1	STP-1113(2)	PE	
34850.2.2	STP-1113(2)	ROW, UTILITIES	
34850.3.2	STP-1113(4)	CONSTRUCTION	



THIS IS A PARTIAL CONTROLLED ACCESS PROJECT WITH ACCESS BEING LIMITED TO INTERCHANGE.

**GRAPHIC SCALES**

2.5 0 5  
PLANS

2.5 0 5  
PROFILE (HORIZONTAL)

0.5 0 1  
PROFILE (VERTICAL)

**DESIGN DATA**

ADT 2004 = 9,900-18,627  
ADT 2025 = 19,350-33,423

DHV = 10 %  
D = 55 %  
T = 7 % \*  
V = 80 km/h

\* TTST 3 % DUAL 4 %

**PROJECT LENGTH**

LENGTH ROADWAY F.A. PROJECT STP-1113(2) = 3.328 KM

LENGTH STRUCTURE F.A. PROJECT STP-1113(2) = 0.079 KM

TOTAL LENGTH STATE PROJECT U-271 = 3.407 KM

Prepared in the Office of:  
**DIVISION OF HIGHWAYS**  
1000 Birch Ridge Dr., Raleigh, NC 27610

2002 STANDARD SPECIFICATIONS

RIGHT OF WAY DATE:  
AUGUST 12, 2002

LETTING DATE:  
OCTOBER 19, 2004

J. S. GOODNIGHT  
PROJECT ENGINEER

S.D. KENDALL  
PROJECT DESIGN ENGINEER

**ROADWAY DESIGN ENGINEER**

**HYDRAULICS ENGINEER**

Professional Engineer Seal: J. S. Goodnight, No. 14493, State of North Carolina.

Professional Engineer Seal: S. D. Kendall, No. 19680, State of North Carolina.

**DIVISION OF HIGHWAYS  
STATE OF NORTH CAROLINA**

STATE DESIGN ENGINEER

DEPARTMENT OF TRANSPORTATION  
FEDERAL HIGHWAY ADMINISTRATION

APPROVED  
DIVISION ADMINISTRATOR

DATE

23-AUG-2004 14:15  
RD196538