

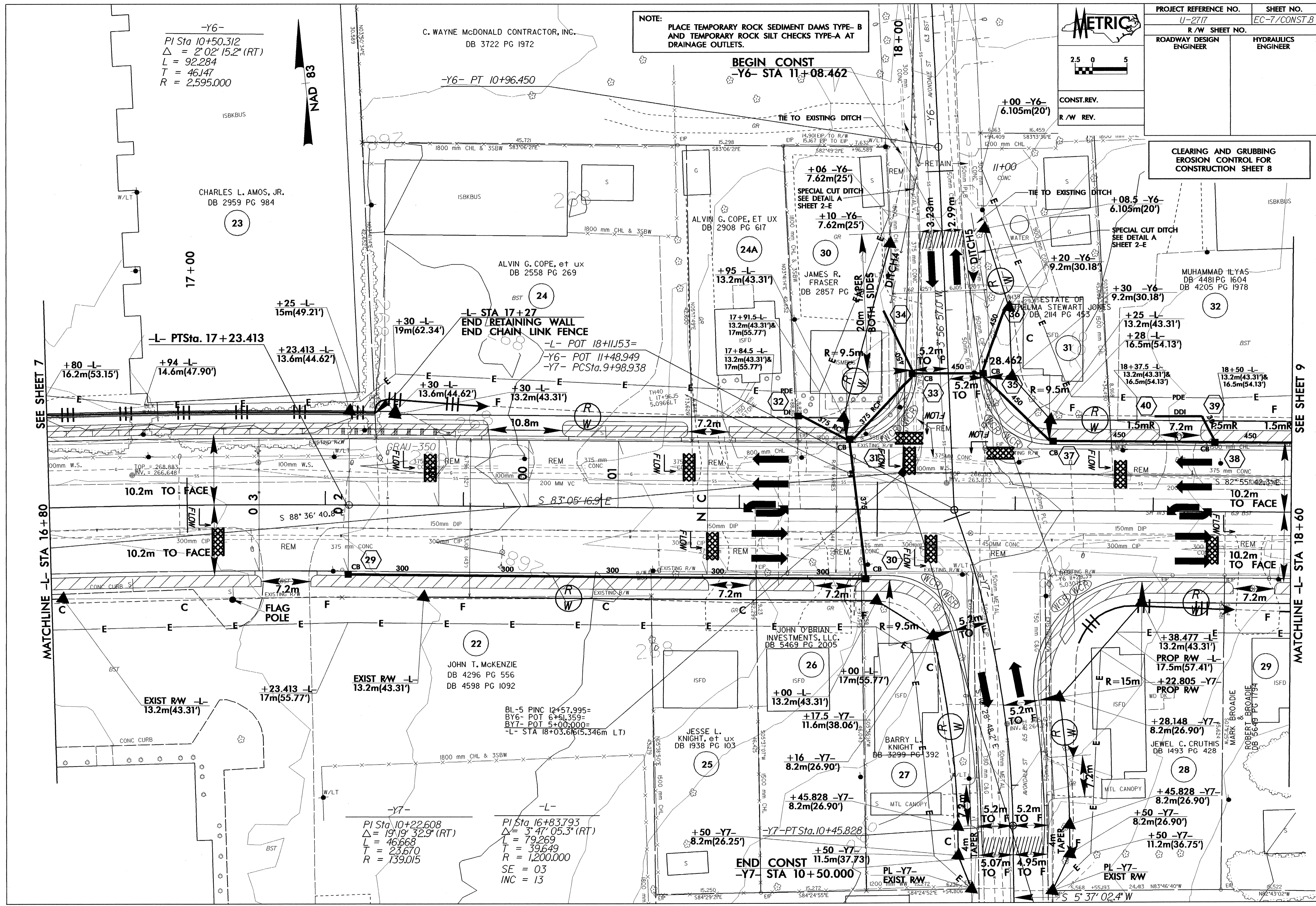
**METRIC**

CONST. REV.  
R/W REV.

PROJECT REFERENCE NO. U-2717	SHEET NO. EC-7/CONST.8
R/W SHEET NO.	HYDRAULICS ENGINEER
ROADWAY DESIGN ENGINEER	

**NOTE:**  
PLACE TEMPORARY ROCK SEDIMENT DAMS TYPE-B AND TEMPORARY ROCK SILT CHECKS TYPE-A AT DRAINAGE OUTLETS.

**CLEARING AND GRUBBING EROSION CONTROL FOR CONSTRUCTION SHEET 8**



-Y6-  
PI Sta 10+50.312  
 $\Delta = 2^{\circ}02'15.2''$  (RT)  
L = 92.284  
T = 46.147  
R = 2,595.000

C. WAYNE McDONALD CONTRACTOR, INC.  
DB 3722 PG 1972

CHARLES L. AMOS, JR.  
DB 2959 PG 984

ALVIN G. COPE, et ux  
DB 2558 PG 269

ALVIN G. COPE, ET UX  
DB 2908 PG 617

JAMES R. FRASER  
DB 2857 PG

JOHN T. MCKENZIE  
DB 4296 PG 556  
DB 4598 PG 1092

JESSE L. KNIGHT, et ux  
DB 1938 PG 103

BARRY L. KNIGHT  
DB 3299 PG 392

JOHN O'BRIAN INVESTMENTS, LLC.  
DB 5469 PG 2005

JEWEL C. CRUTHIS  
DB 1493 PG 428

-Y7-  
PI Sta 10+22.608  
 $\Delta = 19^{\circ}19'32.9''$  (RT)  
L = 46.668  
T = 23.670  
R = 139.015

-L-  
PI Sta 16+83.793  
 $\Delta = 3^{\circ}47'05.3''$  (RT)  
L = 79.269  
T = 39.649  
R = 1,200.000  
SE = 03  
INC = 13

**END CONST**  
-Y7- STA 10+50.000

SEE SHEET 7

MATCHLINE -L- STA 16+80

SEE SHEET 9

MATCHLINE -L- STA 18+60