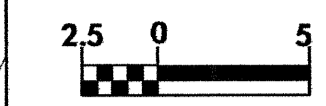


ENVIRONMENTALLY SENSITIVE AREA
SEE PROJECT SPECIAL PROVISIONS

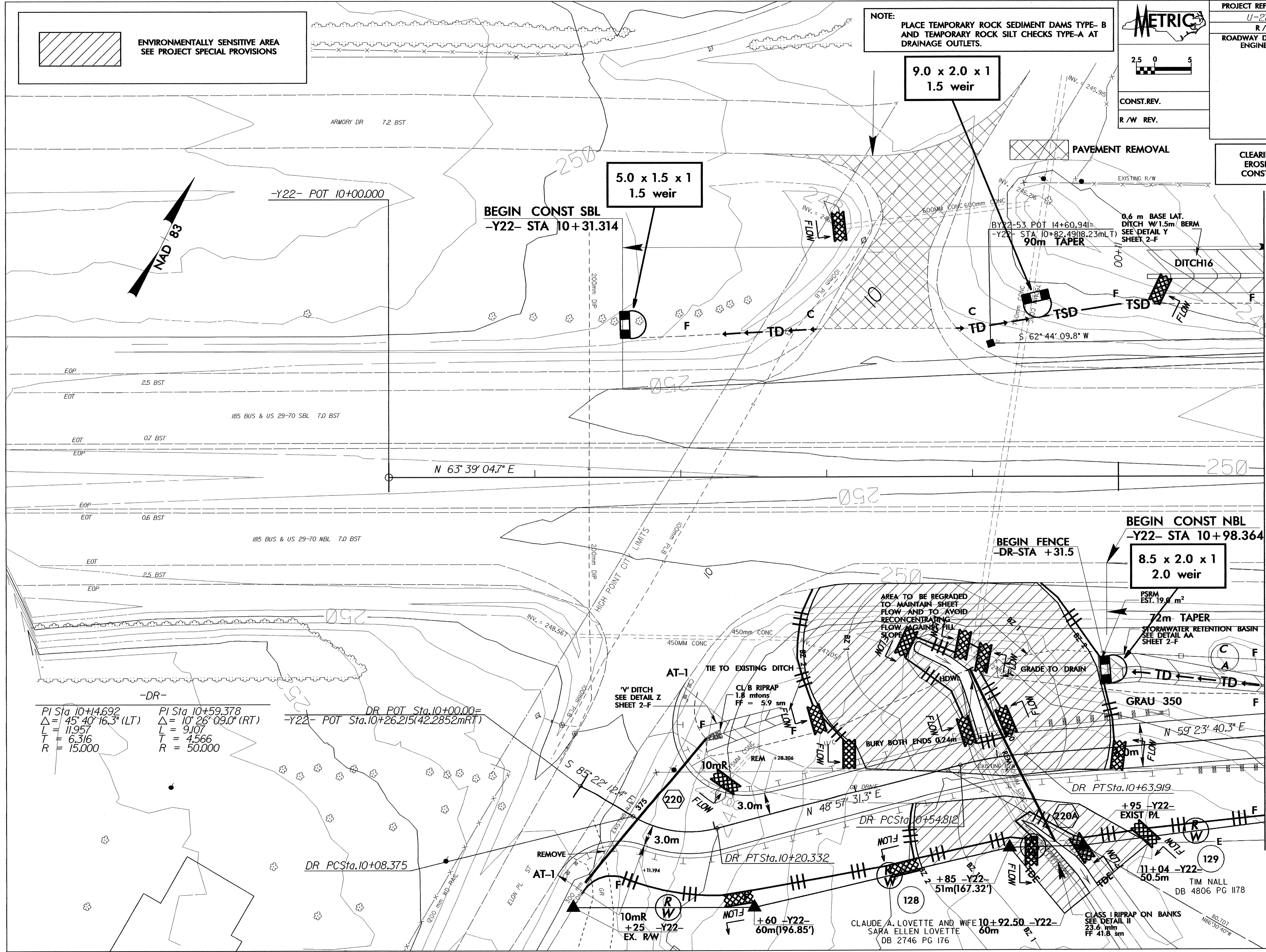


CONST. REV.
R/W REV.

PROJECT REFERENCE NO. U-2717	SHEET NO. EC-26/CONST.26
R/W SHEET NO.	
ROADWAY DESIGN ENGINEER	HYDRAULICS ENGINEER

CLEARING AND GRUBBING
EROSION CONTROL FOR
CONSTRUCTION SHEET 26

NOTE:
PLACE TEMPORARY ROCK SEDIMENT DAMS TYPE-B
AND TEMPORARY ROCK SILT CHECKS TYPE-A AT
DRAINAGE OUTLETS.



-DR-
 PI Sta 10+14.692 PI Sta 10+59.378 DR POT Sta.10+00.00=
 $\Delta = 45^\circ 40' 16.3" (LT)$ $\Delta = 10^\circ 26' 09.0" (RT)$ $-Y22- POT Sta.10+26.215(42.2852mRT)$
 L = 11.957 L = 9.107
 T = 6.316 T = 4.566
 R = 15.000 R = 50.000

AREA TO BE REGRADED
TO MAINTAIN SHEET
FLOW AND TO AVOID
RECONCENTRATING
FLOW AGAINST FILL
SLOPE

BEGIN CONST NBL
-Y22- STA 10+98.364
 8.5 x 2.0 x 1
 2.0 weir
 PSRM
EST. 19.0 m²
 72m- TAPER
 STORMWATER RETENTION BASIN
SEE DETAIL AA
SHEET 2-F

128
 CLAUDE A. LOVETTE AND WIFE 10+92.50 -Y22-
 SARA ELLEN LOVETTE 60m
 DB 2746 PG 176

CLASS I RIPRAP ON BANKS
SEE DETAIL II
23.6 m²
FF 41.8 sm

MATCHLINE -Y22- STA 11+20
SEE SHEET 27