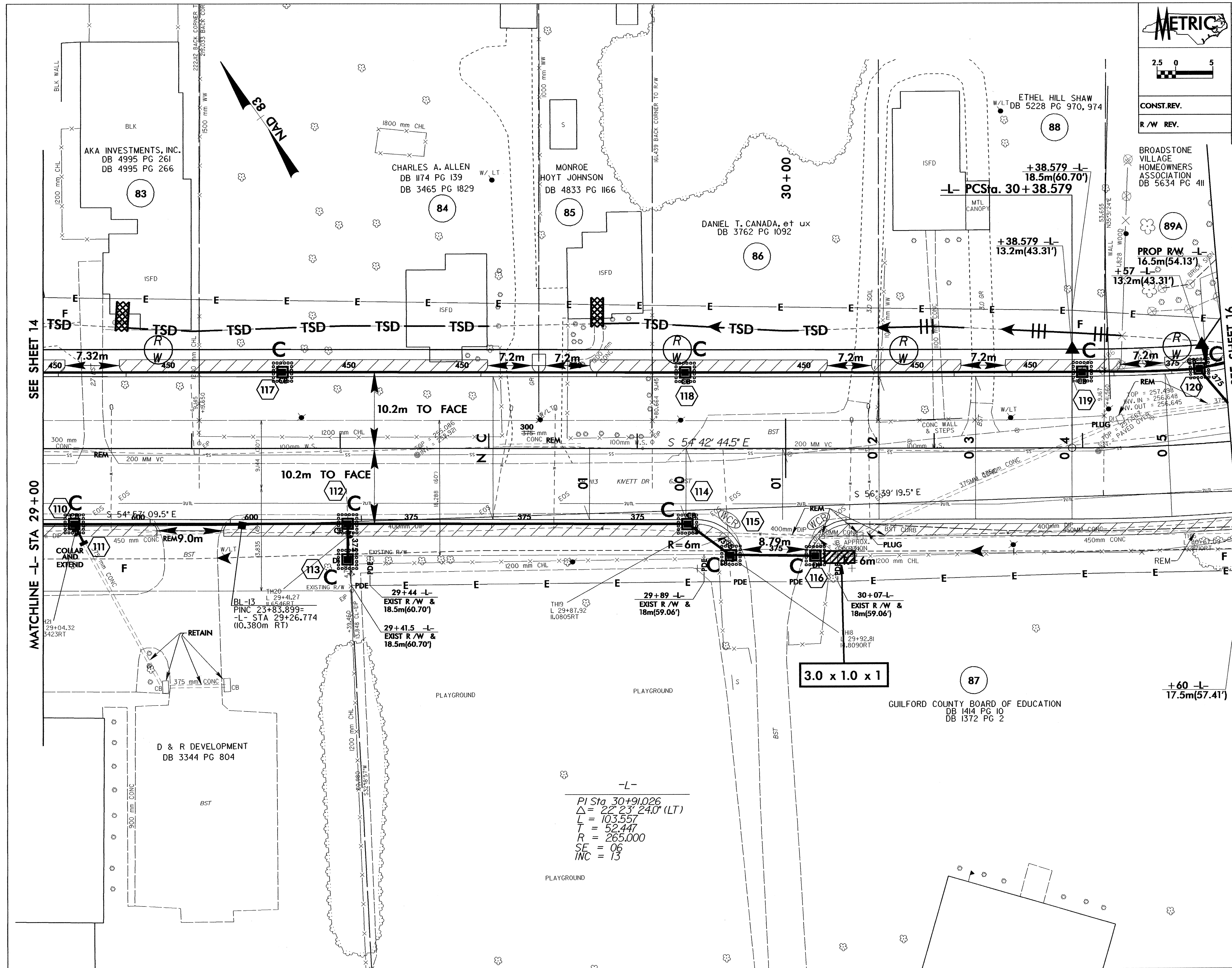


METRIC

CONST. REV.
R/W REV.

PROJECT REFERENCE NO. U-2717	SHEET NO. EC-42/CONST.15
R/W SHEET NO.	
ROADWAY DESIGN ENGINEER	HYDRAULICS ENGINEER



SEE SHEET 14

MATCHLINE -L- STA 29+00

SEE SHEET 16

MATCHLINE -L- STA 30+60

AKA INVESTMENTS, INC.
DB 4995 PG 261
DB 4995 PG 266

CHARLES A. ALLEN
DB 1174 PG 139
DB 3465 PG 1829

MONROE HOYT JOHNSON
DB 4833 PG 1166

DANIEL T. CANADA, et ux
DB 3762 PG 1092

ETHEL HILL SHAW
DB 5228 PG 970, 974

BROADSTONE VILLAGE HOMEOWNERS ASSOCIATION
DB 5634 PG 411

D & R DEVELOPMENT
DB 3344 PG 804

GUILFORD COUNTY BOARD OF EDUCATION
DB 1414 PG 10
DB 1372 PG 2

-L-
PI Sta 30+91.026
 $\Delta = 22^\circ 23' 24.0''$ (LT)
L = 103.557
T = 52.447
R = 265.000
SE = 06
INC = 13

3.0 x 1.0 x 1

+60 -L-
17.5m(57.41')

BL-13
L 29+41.27
PINC 23+83.899=
-L- STA 29+26.774
(10.380m RT)

29+44 -L-
EXIST R/W &
18.5m(60.70')

29+89 -L-
EXIST R/W &
18m(59.06')

30+07 -L-
EXIST R/W &
18m(59.06')

SEE SHEET 14

MATCHLINE -L- STA 29+00

SEE SHEET 16

MATCHLINE -L- STA 30+60

AKA INVESTMENTS, INC.
DB 4995 PG 261
DB 4995 PG 266

CHARLES A. ALLEN
DB 1174 PG 139
DB 3465 PG 1829

MONROE HOYT JOHNSON
DB 4833 PG 1166

DANIEL T. CANADA, et ux
DB 3762 PG 1092

ETHEL HILL SHAW
DB 5228 PG 970, 974

BROADSTONE VILLAGE HOMEOWNERS ASSOCIATION
DB 5634 PG 411

D & R DEVELOPMENT
DB 3344 PG 804

GUILFORD COUNTY BOARD OF EDUCATION
DB 1414 PG 10
DB 1372 PG 2

-L-
PI Sta 30+91.026
 $\Delta = 22^\circ 23' 24.0''$ (LT)
L = 103.557
T = 52.447
R = 265.000
SE = 06
INC = 13

3.0 x 1.0 x 1

+60 -L-
17.5m(57.41')

BL-13
L 29+41.27
PINC 23+83.899=
-L- STA 29+26.774
(10.380m RT)

29+44 -L-
EXIST R/W &
18.5m(60.70')

29+89 -L-
EXIST R/W &
18m(59.06')

30+07 -L-
EXIST R/W &
18m(59.06')