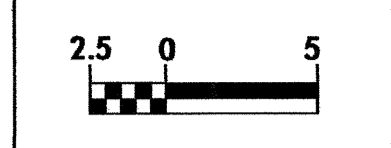
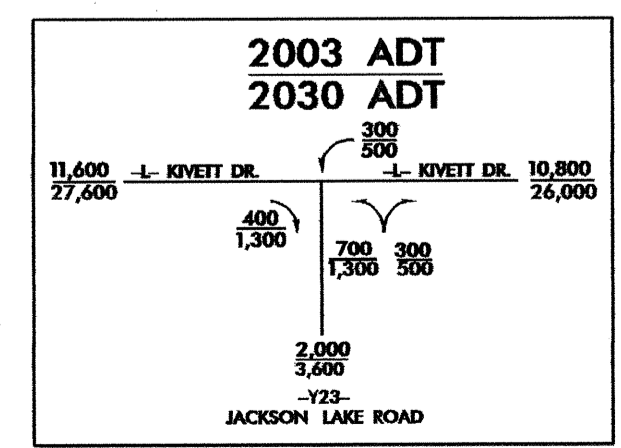
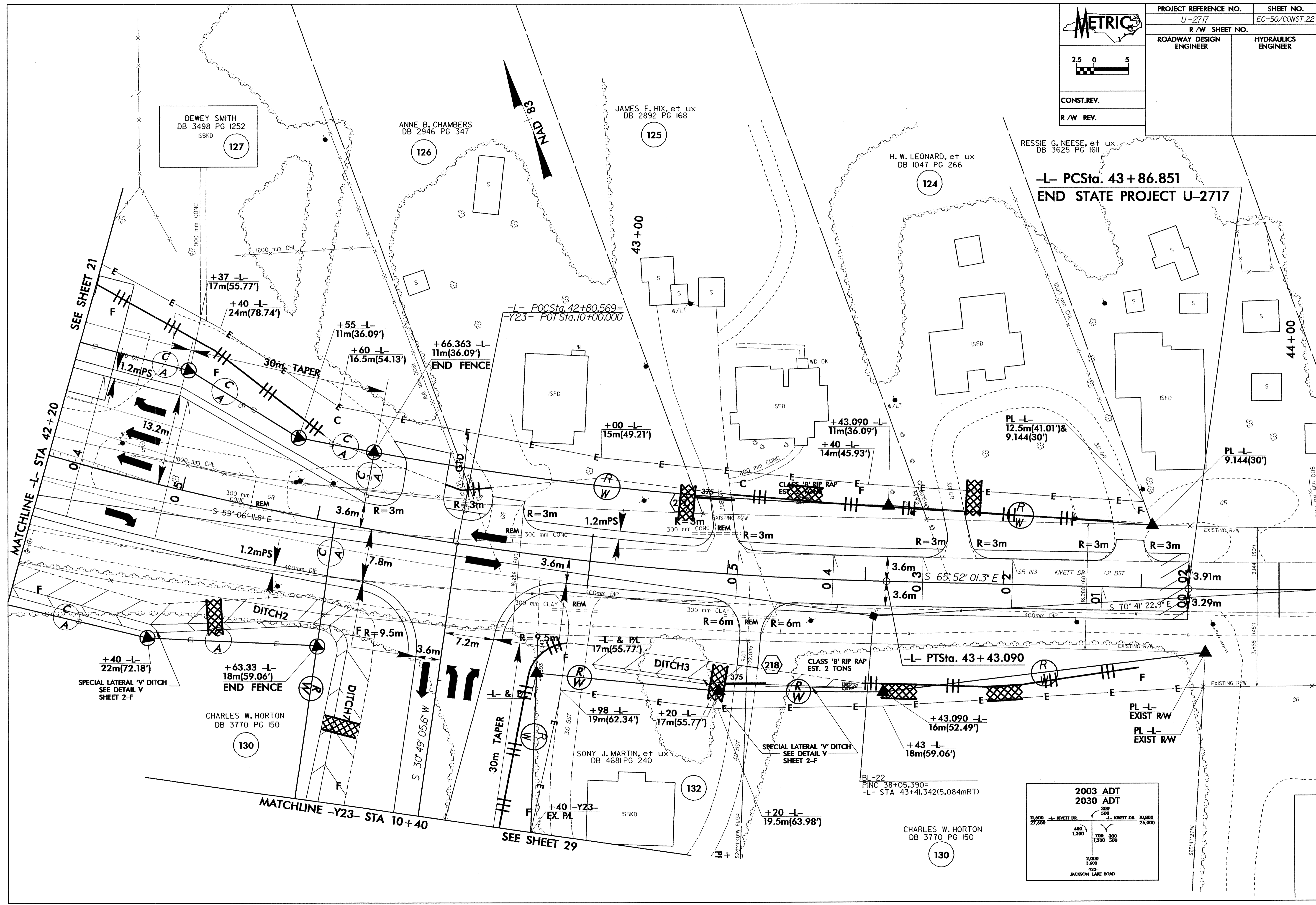




PROJECT REFERENCE NO.	SHEET NO.
U-2717	EC-50/CONST.22
R/W SHEET NO.	
ROADWAY DESIGN ENGINEER	HYDRAULICS ENGINEER



CONST. REV.
R/W REV.



CHARLES W. HORTON
DB 3770 PG 150

130

DEWEY SMITH
DB 3498 PG 1252
ISBKD

127

ANNE B. CHAMBERS
DB 2946 PG 347

126

JAMES F. HIX, et ux
DB 2892 PG 168

125

H. W. LEONARD, et ux
DB 1047 PG 266

124

-L- PCSta. 43+86.851
END STATE PROJECT U-2717

44+00

MATCHLINE -L- STA 42+20

MATCHLINE -Y23- STA 10+40

SEE SHEET 29

SPECIAL LATERAL 'V' DITCH
SEE DETAIL V
SHEET 2-F

SPECIAL LATERAL 'V' DITCH
SEE DETAIL V
SHEET 2-F

PL -L- EXIST RW
PL -L- EXIST RW

BL-22
PINC 38+05.390=
-L- STA 43+41.342(5.084mRT)

+40 -Y23-
EX. PL

SONY J. MARTIN, et ux
DB 4681 PG 240

132

CHARLES W. HORTON
DB 3770 PG 150

130

+40 -L-
22m(72.18')

+63.33 -L-
18m(59.06')
END FENCE

+98 -L-
19m(62.34')

+20 -L-
17m(55.77')

+43.090 -L-
16m(52.49')

+43 -L-
18m(59.06')

-L- PTSta. 43+43.090

-L- & PL
17m(55.77')

CLASS 'B' RIP RAP
EST. 2 TONS

S 70° 41' 22.9" E
3.29m

S 65° 52' 01.3" E
3.91m

F R=9.5m

R=9.5m

R=6m

R=6m

R=3m

R=3m

R=3m

R=3m

R=3m

R=3m

R=3m

R=3m

R=3m

R=3m

R=3m

R=3m

R=3m

1.2mPS

1.2mPS

1.2mPS

1.2mPS

1.2mPS

1.2mPS

1.2mPS

13.2m

30m TAPER

30m TAPER

30m TAPER

30m TAPER

30m TAPER

30m TAPER

30m TAPER

30m TAPER

+37 -L-
17m(55.77')

+40 -L-
24m(78.74')

+55 -L-
11m(36.09')

+60 -L-
16.5m(54.13')

+66.363 -L-
11m(36.09')
END FENCE

+00 -L-
15m(49.21')

+43.090 -L-
11m(36.09')

+40 -L-
14m(45.93')

PL -L-
12.5m(41.01') &
9.144(30')

PL -L-
9.144(30')

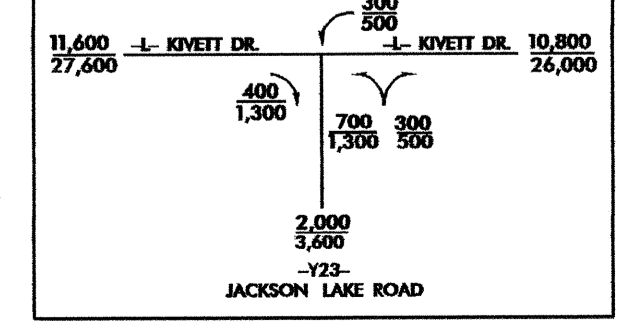
-L- POCSta. 42+80.569=
-Y23- POCSta. 10+00.000

RESSIE G. NEESE, et ux
DB 3625 PG 1611

SB CYN

SEE SHEET 21

2003 ADT
2030 ADT



JACKSON LAKE ROAD