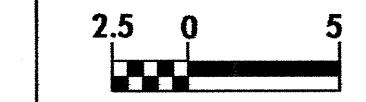
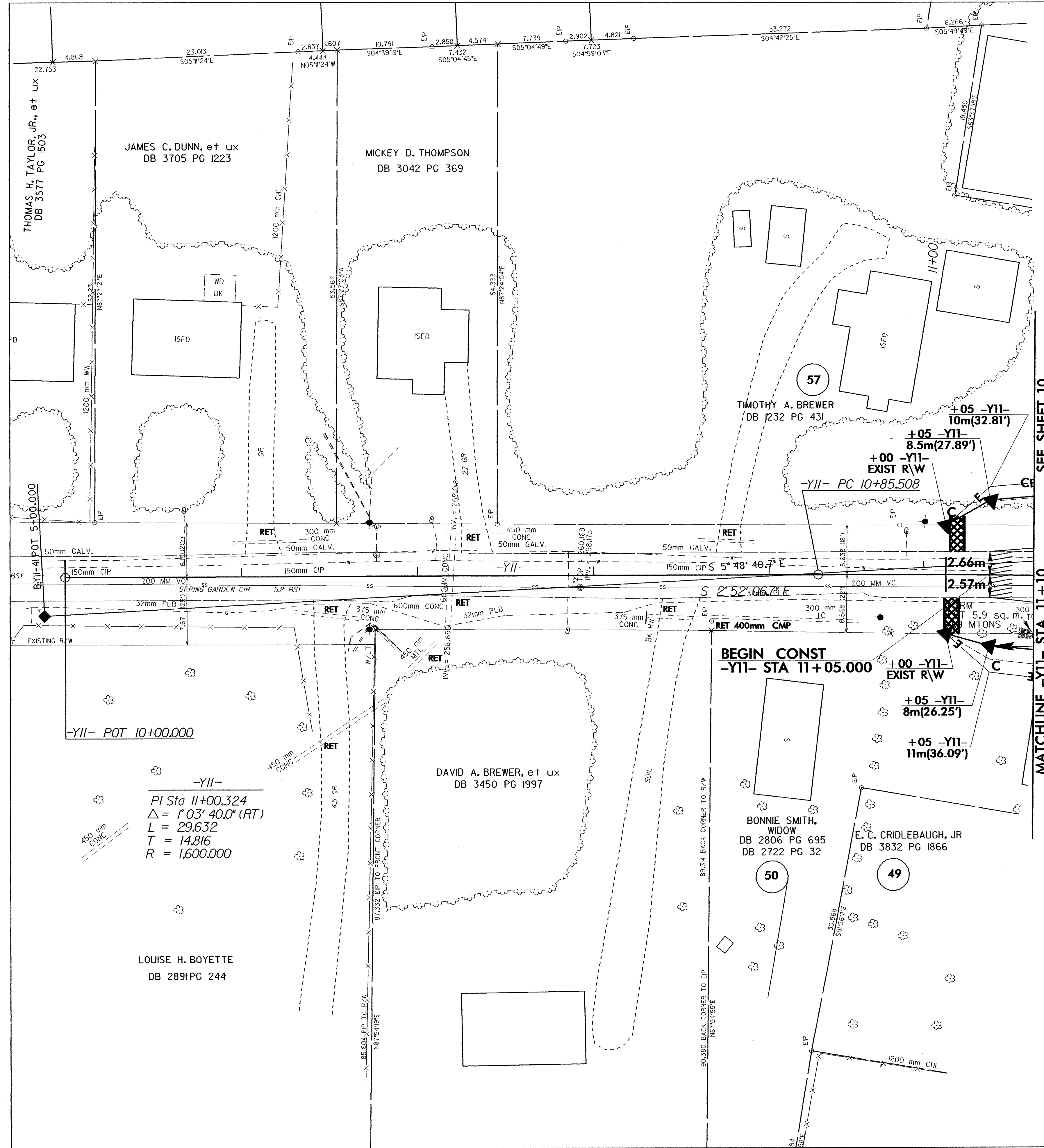
	PROJECT REFERENCE NO.	SHEET NO.
	U-2717	EC-52/CONST.24
R/W SHEET NO.		
ROADWAY DESIGN ENGINEER	HYDRAULICS ENGINEER	
CONST.REV.		
R/W REV.		



FOR -Y11- PROFILE SEE SHEET 46



SEE SHEET 10

MATCHLINE -Y11- STA 11+10

-Y11-
 POT 10+00.000
 PI Sta 11+00.324
 $\Delta = 1^{\circ}03'40.0''$ (RT)
 L = 29.632
 T = 14.816
 R = 1,600.000

LOUISE H. BOYETTE
 DB 2891 PG 244

BEGIN CONST
 -Y11- STA 11+05.000
 EXIST R/W
 +05 -Y11- 8m(26.25')
 +05 -Y11- 11m(36.09')

BONNIE SMITH,
 WIDOW
 DB 2806 PG 695
 DB 2722 PG 32

E. C. CRIDLEBAUGH, JR
 DB 3832 PG 1866

50

49