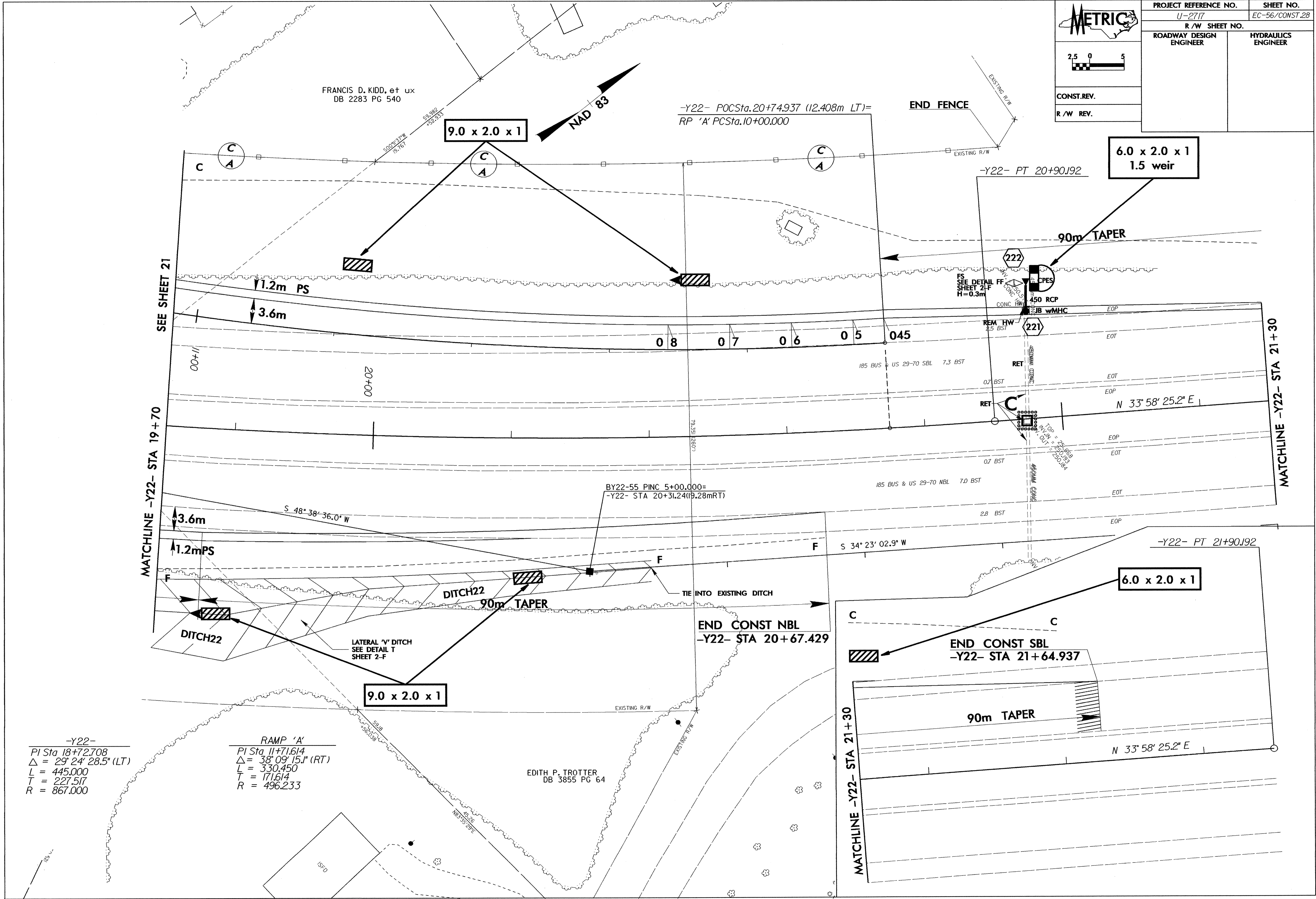
 2.5 0 5	PROJECT REFERENCE NO.	SHEET NO.
	U-2717	EC-56/CONST.28
CONST. REV.	R/W REV.	
ROADWAY DESIGN ENGINEER	HYDRAULICS ENGINEER	



-Y22-  
 PI Sta 18+72.708  
 $\Delta = 29^\circ 24' 28.5" (LT)$   
 L = 445.000  
 T = 227.517  
 R = 867.000

RAMP 'A'  
 PI Sta 11+71.614  
 $\Delta = 38^\circ 09' 15" (RT)$   
 L = 330.450  
 T = 171.614  
 R = 496.233

EDITH P. TROTTER  
 DB 3855 PG 64