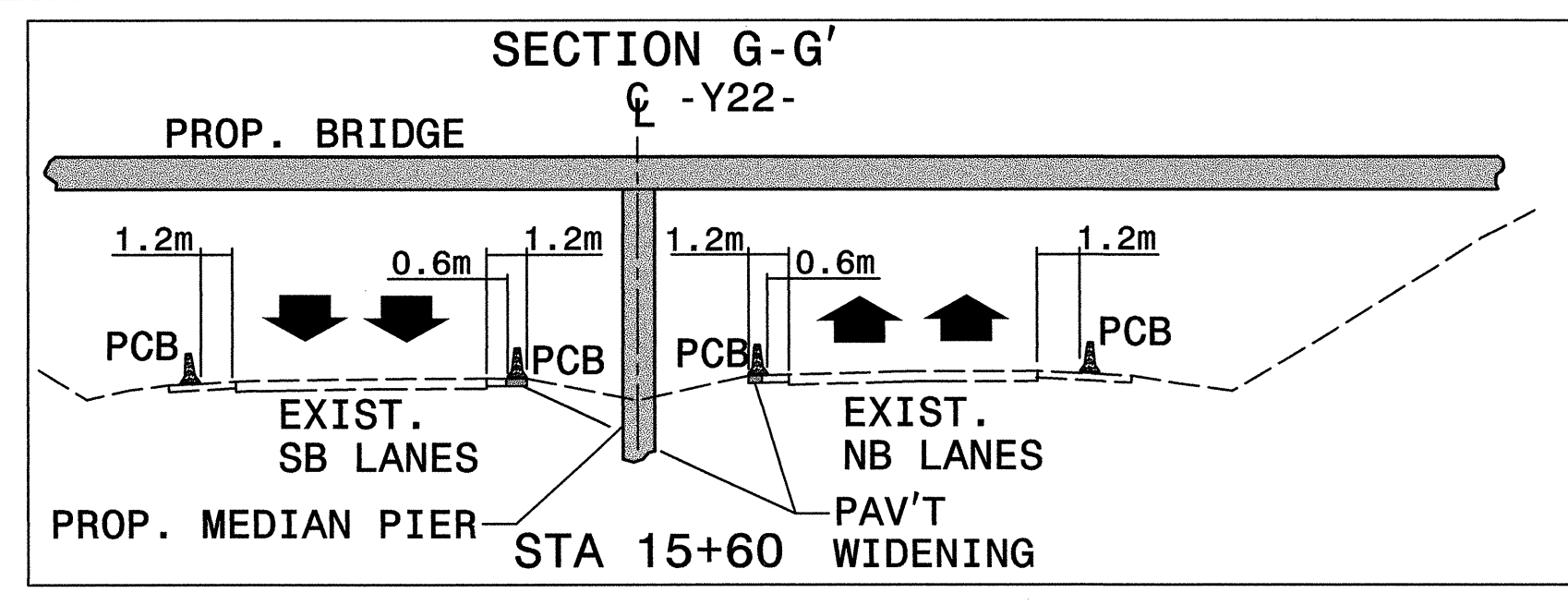


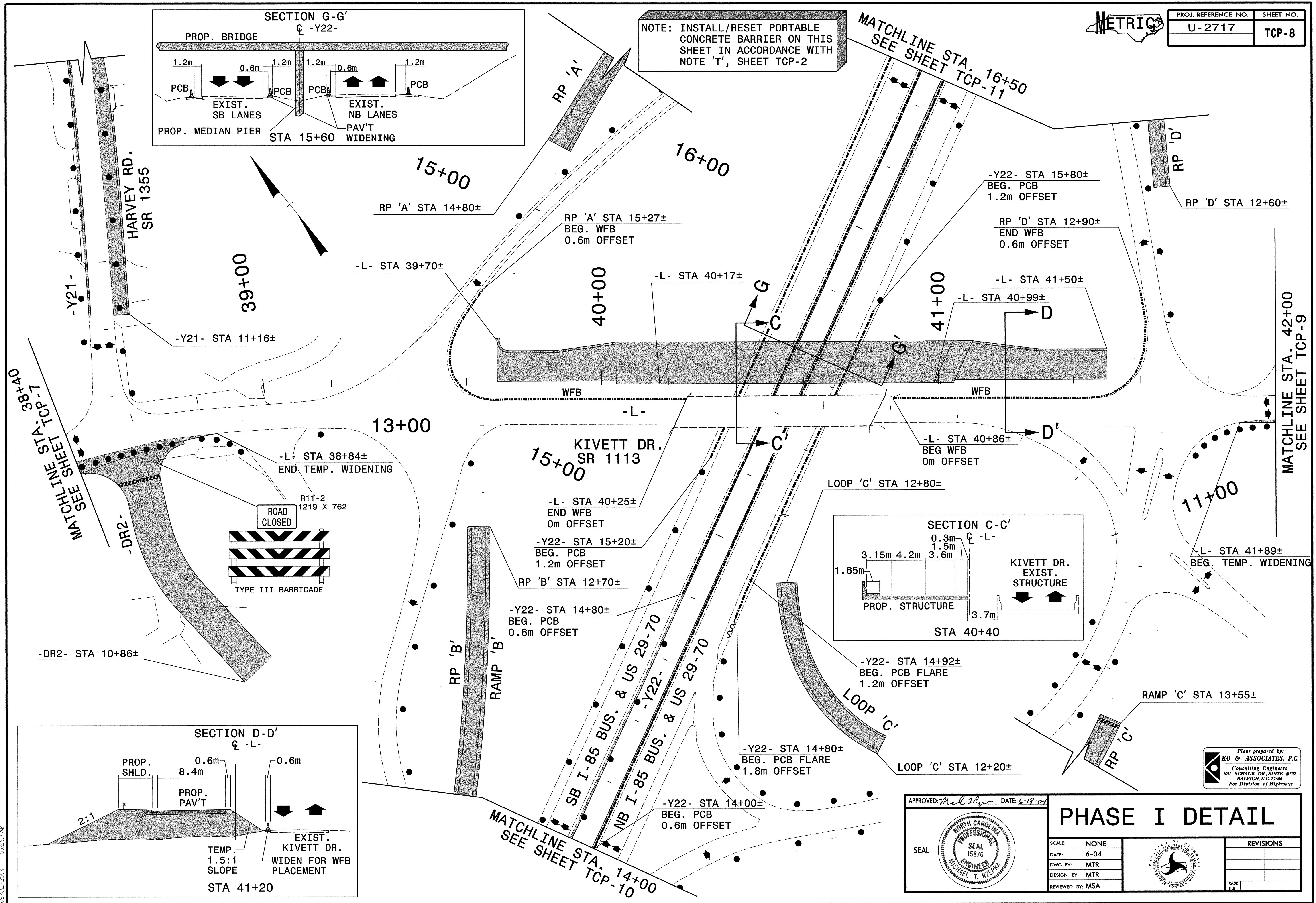


PROJ. REFERENCE NO.	SHEET NO.
U-2717	TCP-8

NOTE: INSTALL/RESET PORTABLE CONCRETE BARRIER ON THIS SHEET IN ACCORDANCE WITH NOTE 'T', SHEET TCP-2



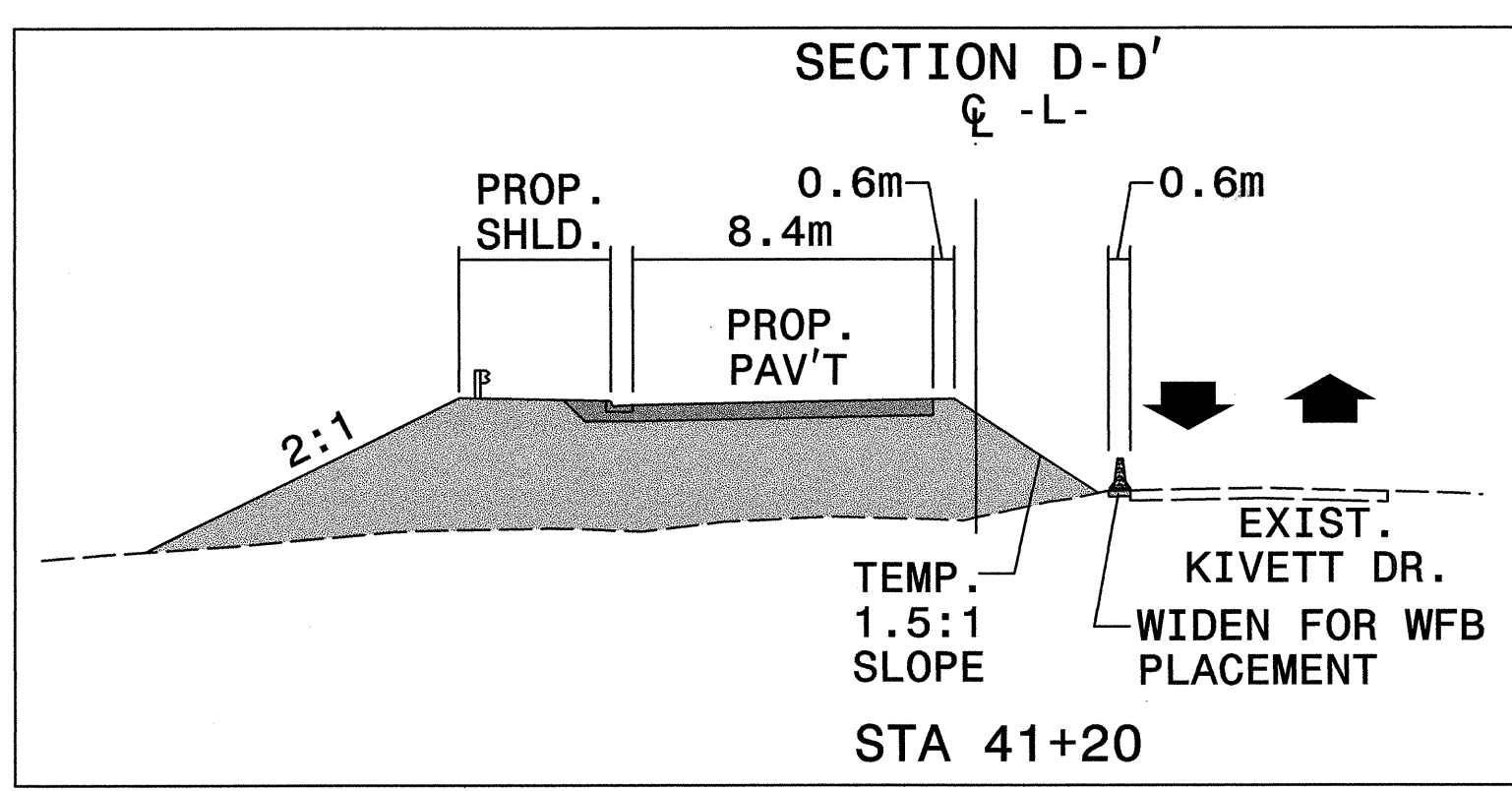
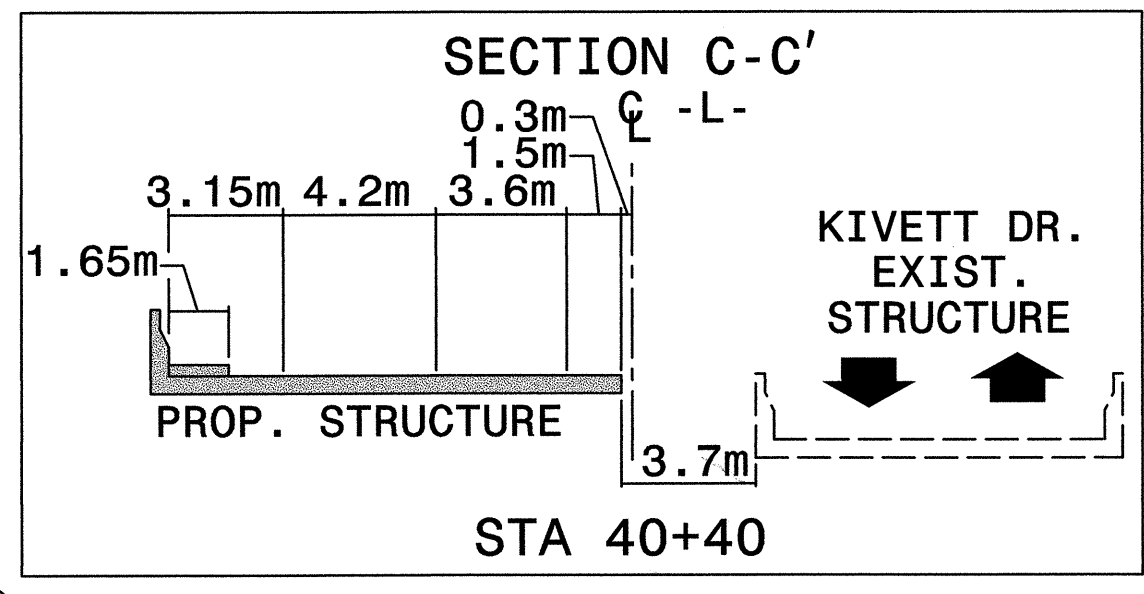
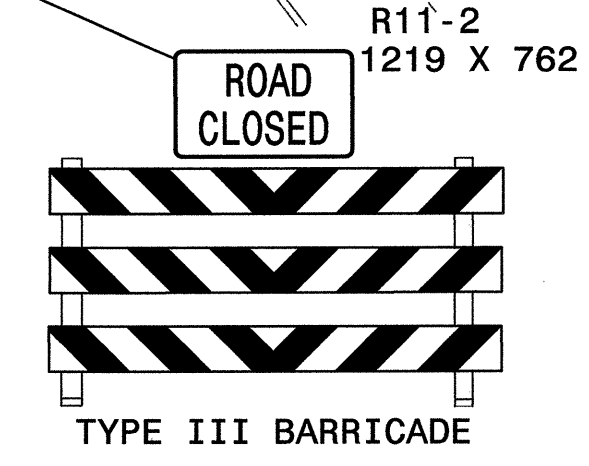
MATCHLINE STA. 16+50  
SEE SHEET TCP-11



HARVEY RD.  
SR 1355

MATCHLINE STA. 7+80  
SEE SHEET TCP-7

MATCHLINE STA. 42+00  
SEE SHEET TCP-9



APPROVED: *Michael T. Riepan* DATE: 6-18-04

<b>PHASE I DETAIL</b>	
SCALE: NONE	REVISIONS
DATE: 6-04	
DWG. BY: MTR	
DESIGN BY: MTR	
REVIEWED BY: MSA	

Plans prepared by:  
**KO & ASSOCIATES, P.C.**  
Consulting Engineers  
101 SCHAUB DR., SUITE #202  
RALEIGH, N.C. 27606  
For Division of Highways

\n\traff\100-2717\1002\plans\04\4wz\dgn  
 06/02/2004 09:21:51 AM