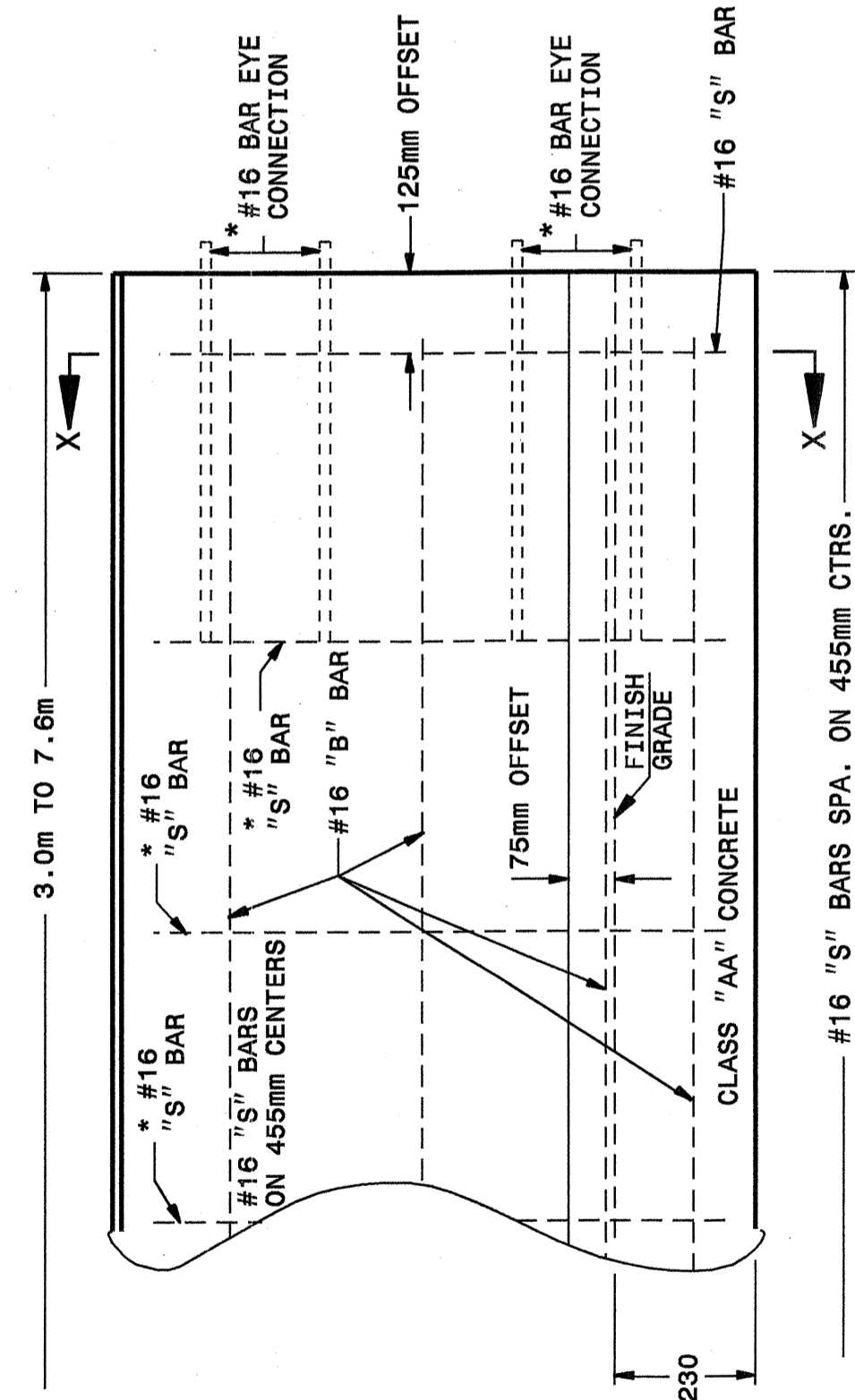


18-JUN-2003 16:19
 \\va\spec\details\erward\stds\02\stds to Special Details\metric\85701\857d01m.dgn
 erward
 AT 10:21:22.60

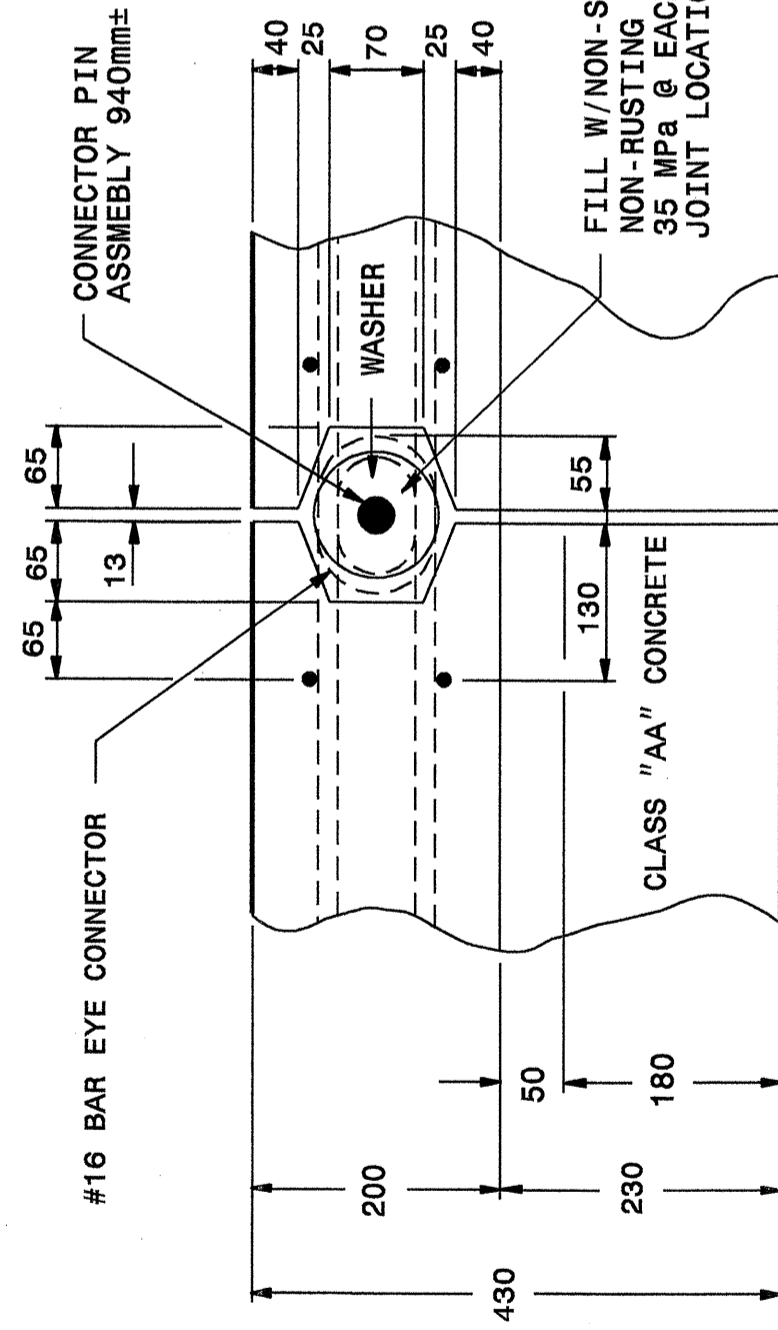
STATE OF
 NORTH CAROLINA
 DEPT. OF TRANSPORTATION
 DIVISION OF HIGHWAYS
 RALEIGH, N.C.

METRIC DETAIL DRAWING FOR
**PRECAST REINFORCED
 CONCRETE BARRIER**
 1.0m SINGLE FACED

SHEET 5 OF 8
857D01

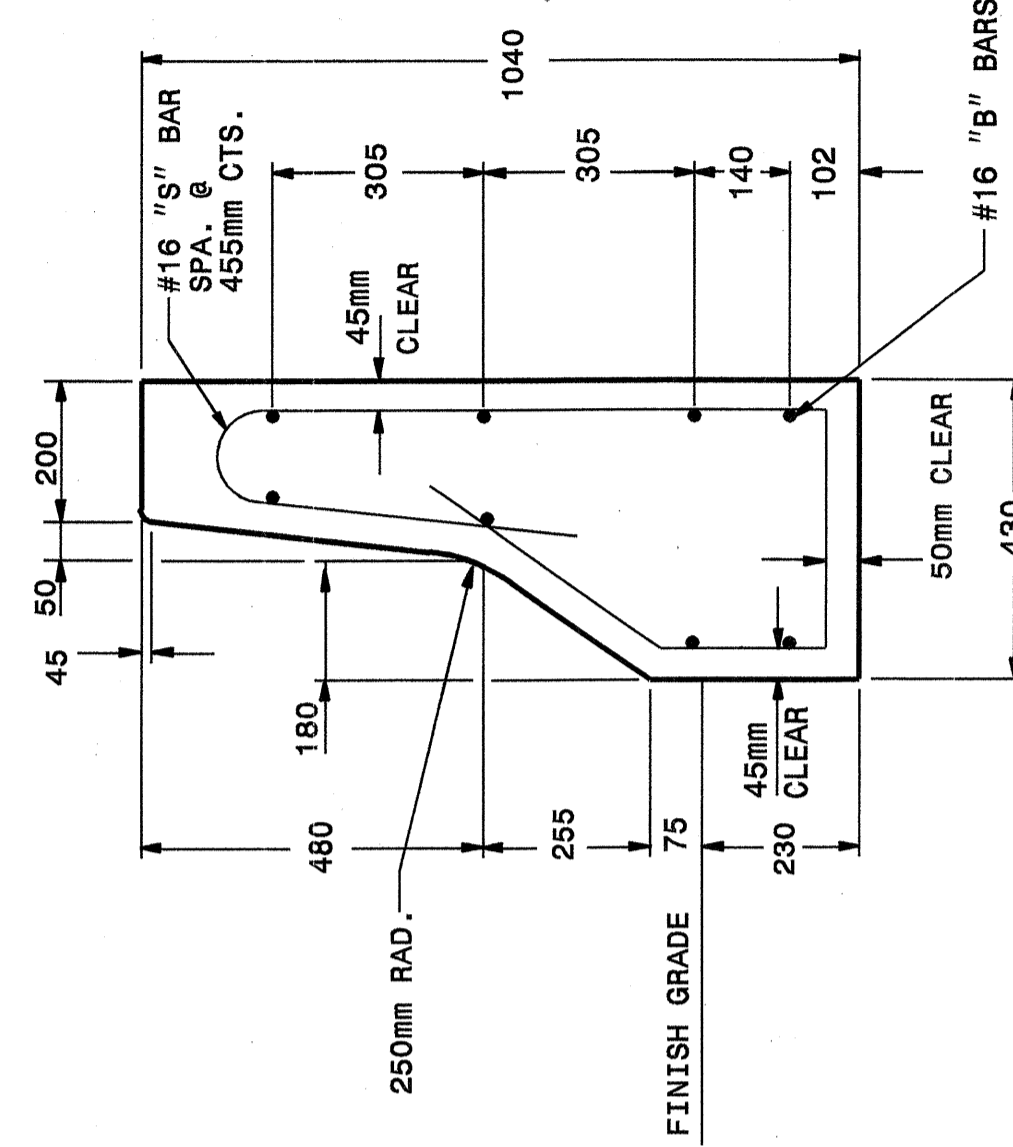


PART FRONT ELEVATION



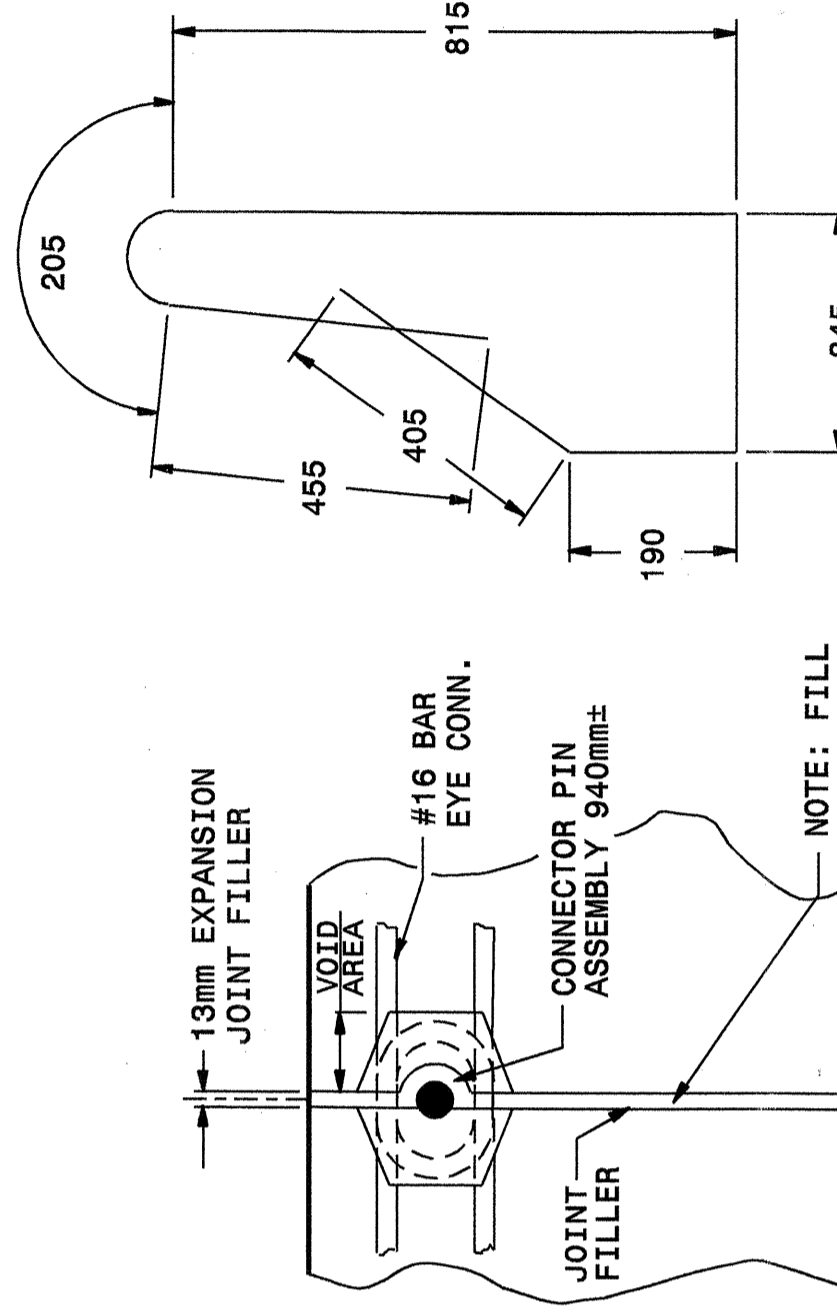
PLAN OF BONDED CONNECTION OF PRECAST UNIT

Note:
 This drawing is dimensioned in
 millimeters unless otherwise
 depicted within the drawing.



**DETAIL X-X
 CROSS SECTIONAL VIEW**

*SEE SHEET 4
 FOR DIMENSIONS



JOINT FILLER DETAIL

NOTE: FILL
 COMPLETELY THROUGH
 BARRIER SECTION
 @ 24.4mm±
 INTERVALS

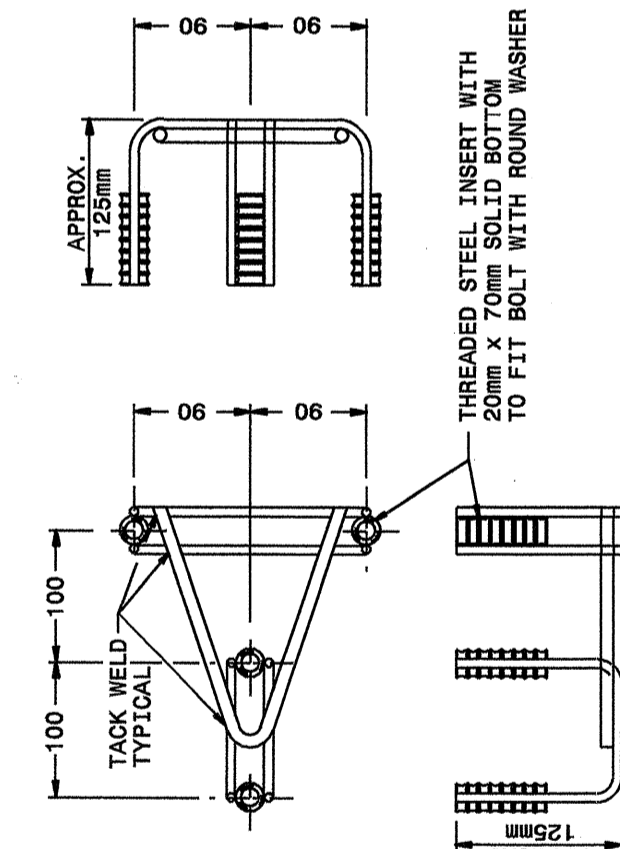
SHEET 5 OF 8
857D01

METRIC DETAIL DRAWING FOR
**PRECAST REINFORCED
 CONCRETE BARRIER**
 1.0m SINGLE FACED
 STATE OF
 NORTH CAROLINA
 DEPT. OF TRANSPORTATION
 DIVISION OF HIGHWAYS
 RALEIGH, N.C.

STATE OF
 NORTH CAROLINA
 DEPT. OF TRANSPORTATION
 DIVISION OF HIGHWAYS
 RALEIGH, N.C.

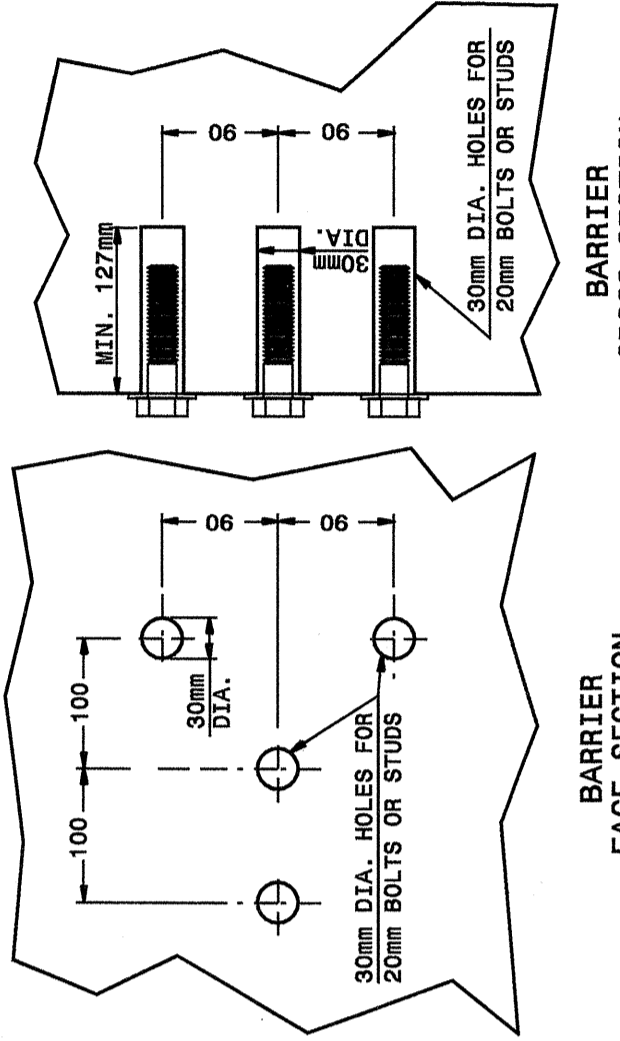
METRIC DETAIL DRAWING FOR
**PRECAST REINFORCED
 CONCRETE BARRIER**
 1.0m SINGLE FACED

SHEET 6 OF 8
857D01



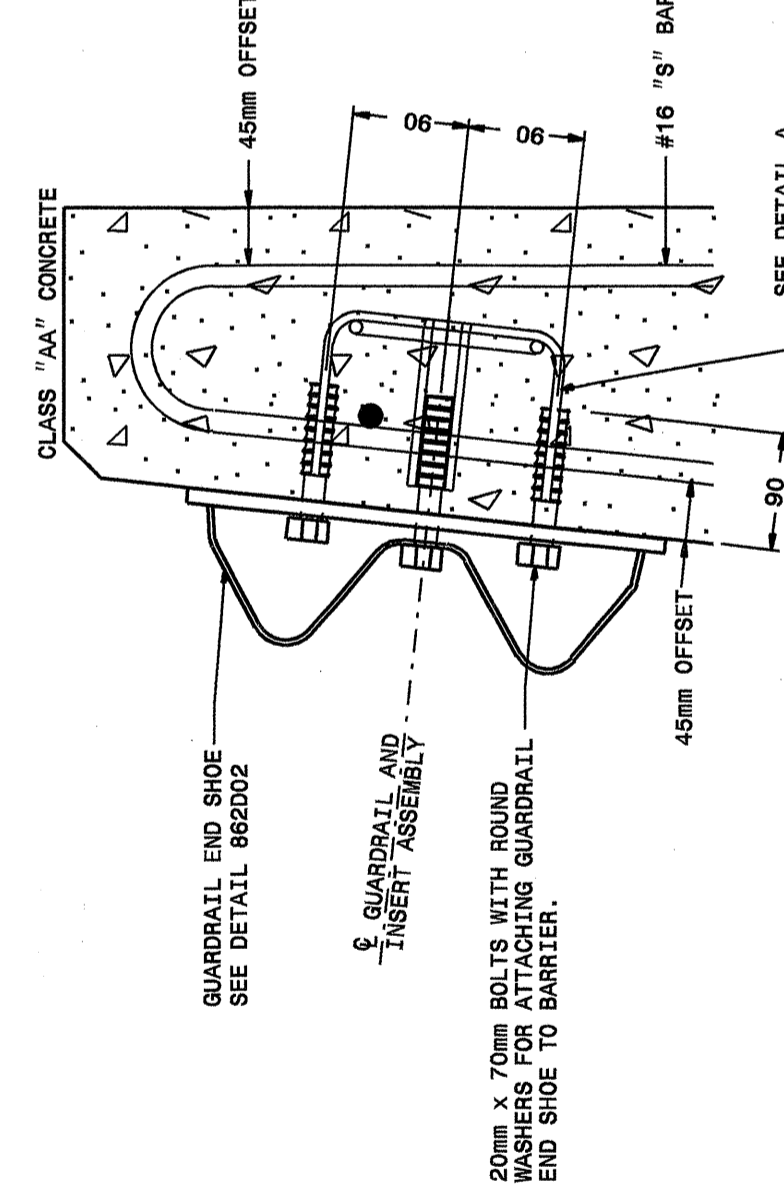
DETAIL A

4 BOLT INSERT ASSEMBLY



DETAIL B

CHEMICAL BONDING

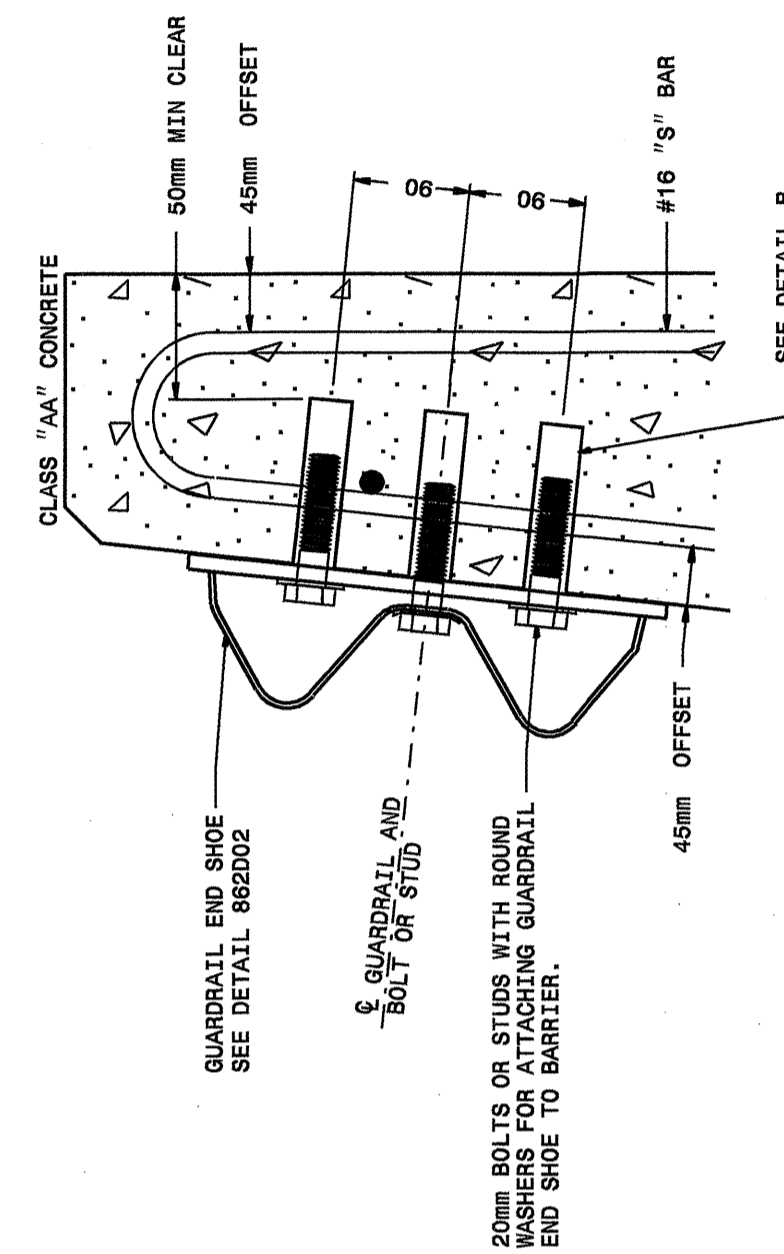


**PART SECTION
 OF BARRIER**

**THRU END SHOE SECTION AND
 4 BOLT INSERT ASSEMBLY**

Note:
 This drawing is dimensioned in
 millimeters unless otherwise
 depicted within the drawing.

NOTES FOR CHEMICAL BONDING BOLTS OR STUDS:
 1. REMOVE ALL DIRT, DUST, RUST, WATER AND OTHER CONTAMINANTS FROM THE HOLE.
 2. PLACE ADHESIVE INTO EACH HOLE TO DEVELOP 125% OF THE YIELD STRENGTH OF THE BOLT OR STUD.
 3. REFER TO THE BOLT OR STUD TO 90% OF THE SPECIFIED STRENGTH IN THE PRESENTING OF THE ENGINEER.
 4. MAKE NO SEPARATE PAYMENT FOR THIS TYPE OF INSTALLATION OR TESTING.



**PART SECTION
 OF BARRIER**

**THRU END SHOE SECTION AND
 CHEMICALLY BOUND BOLTS OR STUDS**

SHEET 6 OF 8
857D01

METRIC DETAIL DRAWING FOR
**PRECAST REINFORCED
 CONCRETE BARRIER**
 1.0m SINGLE FACED
 STATE OF
 NORTH CAROLINA
 DEPT. OF TRANSPORTATION
 DIVISION OF HIGHWAYS
 RALEIGH, N.C.

**DESIGN SERVICES UNIT
 STANDARDS AND SPECIAL DESIGN**
 Office 919-250-4128 FAX 919-250-4119

SEE PLATE FOR TITLE

ORIGINAL BY: 2002 STD. 857.01 DATE:
 MODIFIED BY: E.E. WARD DATE: 6-12-03
 CHECKED BY: *E.E. Ward* DATE:
 FILE SPEC.: /usr/stds/02todetail/metric/85701/857d01m.dgn

