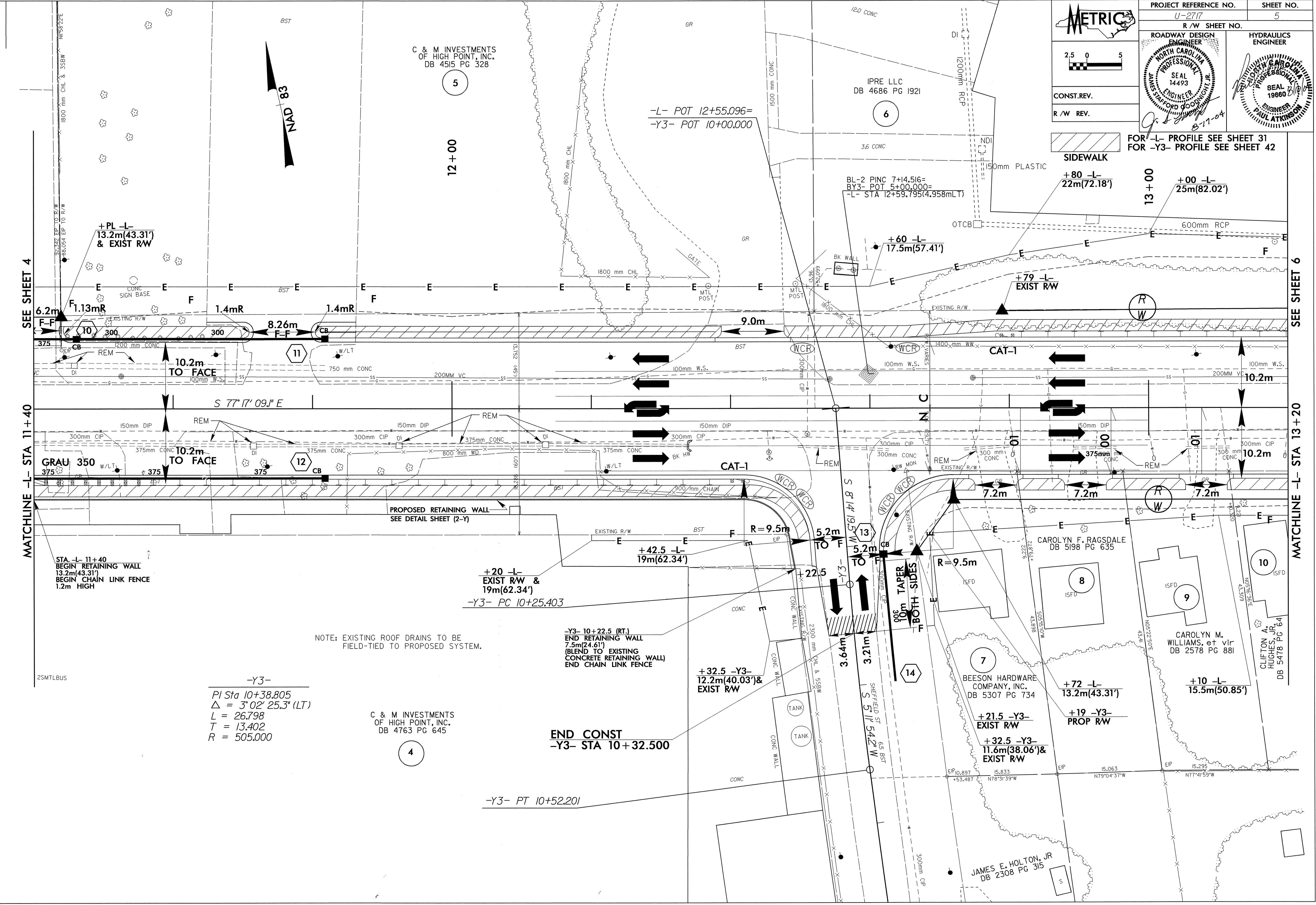
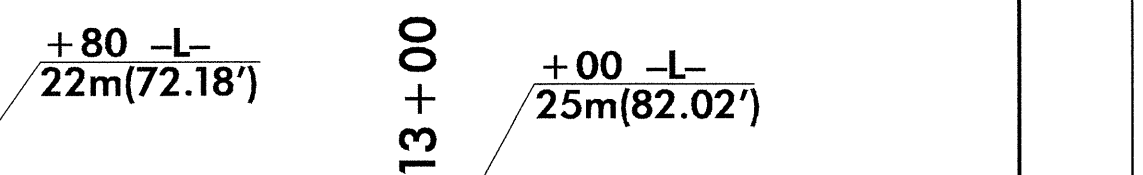


PROJECT REFERENCE NO. U-2717	SHEET NO. 5
R/W SHEET NO.	
ROADWAY DESIGN ENGINEER NORTH CAROLINA PROFESSIONAL ENGINEER SEAL 14493 JAMES SAFFORD GOODING, JR. 8-17-04	HYDRAULICS ENGINEER NORTH CAROLINA PROFESSIONAL ENGINEER SEAL 19660 PAUL ATKINSON

CONST. REV.
R/W REV.

FOR -L- PROFILE SEE SHEET 31
FOR -Y3- PROFILE SEE SHEET 42



SEE SHEET 4

MATCHLINE -L- STA 11+40

SEE SHEET 6

MATCHLINE -L- STA 13+20

REVISIONS

STA -L- 11+40
BEGIN RETAINING WALL
13.2m(43.31)
BEGIN CHAIN LINK FENCE
1.2m HIGH

-Y3-
PI Sta 10+38.805
 $\Delta = 3^{\circ}02'25.3"$ (LT)
L = 26.798
T = 13.402
R = 505.000

C & M INVESTMENTS
OF HIGH POINT, INC.
DB 4763 PG 645

END CONST
-Y3- STA 10+32.500

NOTE: EXISTING ROOF DRAINS TO BE
FIELD-TIED TO PROPOSED SYSTEM.

-Y3- 10+22.5 (RT)
END RETAINING WALL
7.5m(24.61')
(BLEND TO EXISTING
CONCRETE RETAINING WALL)
END CHAIN LINK FENCE

+32.5 -Y3-
12.2m(40.03')&
EXIST RW

-Y3- PT 10+52.201

JAMES E. HOLTON, JR
DB 2308 PG 315

+21.5 -Y3-
EXIST RW

+32.5 -Y3-
11.6m(38.06')&
EXIST RW

+72 -L-
13.2m(43.31')

+19 -Y3-
PROP RW

+10 -L-
15.5m(50.85')

+20 -L-
EXIST RW &
19m(62.34')

-Y3- PC 10+25.403

R=9.5m

R=9.5m

+PL -L-
13.2m(43.31')
& EXIST RW

-L- POT 12+55.096=
-Y3- POT 10+00.000

IPRE LLC
DB 4686 PG 1921

BL-2 PINC 7+14.516=
BY3- POT 5+00.000=
-L- STA 12+59.795(4.958mLT)

+60 -L-
17.5m(57.41')

+80 -L-
22m(72.18')

+00 -L-
25m(82.02')

+79 -L-
EXIST RW

+42.5 -L-
19m(62.34')

+22.5 -Y3-
TO F

+5.2m TO F

+5.2m TO F

10m TAPER
30' ON
BOTH SIDES

3.64m

3.21m

+72 -L-
13.2m(43.31')

+19 -Y3-
PROP RW

+10 -L-
15.5m(50.85')

+21.5 -Y3-
EXIST RW

+32.5 -Y3-
11.6m(38.06')&
EXIST RW

+72 -L-
13.2m(43.31')

+19 -Y3-
PROP RW

+10 -L-
15.5m(50.85')

JAMES E. HOLTON, JR
DB 2308 PG 315

+21.5 -Y3-
EXIST RW

+32.5 -Y3-
11.6m(38.06')&
EXIST RW

+72 -L-
13.2m(43.31')

+19 -Y3-
PROP RW

+10 -L-
15.5m(50.85')

JAMES E. HOLTON, JR
DB 2308 PG 315

+21.5 -Y3-
EXIST RW

+32.5 -Y3-
11.6m(38.06')&
EXIST RW

+72 -L-
13.2m(43.31')

+19 -Y3-
PROP RW

+10 -L-
15.5m(50.85')

JAMES E. HOLTON, JR
DB 2308 PG 315

+21.5 -Y3-
EXIST RW

+32.5 -Y3-
11.6m(38.06')&
EXIST RW

+72 -L-
13.2m(43.31')

+19 -Y3-
PROP RW

+10 -L-
15.5m(50.85')

JAMES E. HOLTON, JR
DB 2308 PG 315

+21.5 -Y3-
EXIST RW

+32.5 -Y3-
11.6m(38.06')&
EXIST RW

+72 -L-
13.2m(43.31')

+19 -Y3-
PROP RW

+10 -L-
15.5m(50.85')

JAMES E. HOLTON, JR
DB 2308 PG 315

+21.5 -Y3-
EXIST RW

+32.5 -Y3-
11.6m(38.06')&
EXIST RW

+72 -L-
13.2m(43.31')

+19 -Y3-
PROP RW

+10 -L-
15.5m(50.85')

JAMES E. HOLTON, JR
DB 2308 PG 315

+21.5 -Y3-
EXIST RW

+32.5 -Y3-
11.6m(38.06')&
EXIST RW

+72 -L-
13.2m(43.31')

+19 -Y3-
PROP RW

+10 -L-
15.5m(50.85')

JAMES E. HOLTON, JR
DB 2308 PG 315

+21.5 -Y3-
EXIST RW

+32.5 -Y3-
11.6m(38.06')&
EXIST RW

+72 -L-
13.2m(43.31')

+19 -Y3-
PROP RW

+10 -L-
15.5m(50.85')

JAMES E. HOLTON, JR
DB 2308 PG 315

+21.5 -Y3-
EXIST RW

+32.5 -Y3-
11.6m(38.06')&
EXIST RW

+72 -L-
13.2m(43.31')

+19 -Y3-
PROP RW

+10 -L-
15.5m(50.85')

JAMES E. HOLTON, JR
DB 2308 PG 315

+21.5 -Y3-
EXIST RW

+32.5 -Y3-
11.6m(38.06')&
EXIST RW

+72 -L-
13.2m(43.31')

+19 -Y3-
PROP RW

+10 -L-
15.5m(50.85')

JAMES E. HOLTON, JR
DB 2308 PG 315

+21.5 -Y3-
EXIST RW

+32.5 -Y3-
11.6m(38.06')&
EXIST RW

+72 -L-
13.2m(43.31')

+19 -Y3-
PROP RW

+10 -L-
15.5m(50.85')

JAMES E. HOLTON, JR
DB 2308 PG 315

+21.5 -Y3-
EXIST RW

+32.5 -Y3-
11.6m(38.06')&
EXIST RW

+72 -L-
13.2m(43.31')

+19 -Y3-
PROP RW

+10 -L-
15.5m(50.85')

JAMES E. HOLTON, JR
DB 2308 PG 315

+21.5 -Y3-
EXIST RW

+32.5 -Y3-
11.6m(38.06')&
EXIST RW

+72 -L-
13.2m(43.31')

+19 -Y3-
PROP RW

+10 -L-
15.5m(50.85')

JAMES E. HOLTON, JR
DB 2308 PG 315

+21.5 -Y3-
EXIST RW

+32.5 -Y3-
11.6m(38.06')&
EXIST RW

+72 -L-
13.2m(43.31')

+19 -Y3-
PROP RW

+10 -L-
15.5m(50.85')

JAMES E. HOLTON, JR
DB 2308 PG 315

+21.5 -Y3-
EXIST RW

+32.5 -Y3-
11.6m(38.06')&
EXIST RW

+72 -L-
13.2m(43.31')

+19 -Y3-
PROP RW

+10 -L-
15.5m(50.85')

JAMES E. HOLTON, JR
DB 2308 PG 315

+21.5 -Y3-
EXIST RW

+32.5 -Y3-
11.6m(38.06')&
EXIST RW

+72 -L-
13.2m(43.31')

+19 -Y3-
PROP RW

+10 -L-
15.5m(50.85')

JAMES E. HOLTON, JR
DB 2308 PG 315

+21.5 -Y3-
EXIST RW

+32.5 -Y3-
11.6m(38.06')&
EXIST RW

+72 -L-
13.2m(43.31')

+19 -Y3-
PROP RW

+10 -L-
15.5m(50.85')

JAMES E. HOLTON, JR
DB 2308 PG 315

+21.5 -Y3-
EXIST RW

+32.5 -Y3-
11.6m(38.06')&
EXIST RW

+72 -L-
13.2m(43.31')

+19 -Y3-
PROP RW

+10 -L-
15.5m(50.85')

JAMES E. HOLTON, JR
DB 2308 PG 315

+21.5 -Y3-
EXIST RW

+32.5 -Y3-
11.6m(38.06')&
EXIST RW

+72 -L-
13.2m(43.31')

+19 -Y3-
PROP RW

+10 -L-
15.5m(50.85')

JAMES E. HOLTON, JR
DB 2308 PG 315

+21.5 -Y3-
EXIST RW

+32.5 -Y3-
11.6m(38.06')&
EXIST RW

+72 -L-
13.2m(43.31')

+19 -Y3-
PROP RW

+10 -L-
15.5m(50.85')

JAMES E. HOLTON, JR
DB 2308 PG 315

+21.5 -Y3-
EXIST RW

+32.5 -Y3-
11.6m(38.06')&
EXIST RW

+72 -L-
13.2m(43.31')

+19 -Y3-
PROP RW

+10 -L-
15.5m(50.85')

JAMES E. HOLTON, JR
DB 2308 PG 315

+21.5 -Y3-
EXIST RW

+32.5 -Y3-
11.6m(38.06')&
EXIST RW

+72 -L-
13.2m(43.31')

+19 -Y3-
PROP RW

+10 -L-
15.5m(50.85')

JAMES E. HOLTON, JR
DB 2308 PG 315

+21.5 -Y3-
EXIST RW

+32.5 -Y3-
11.6m(38.06')&
EXIST RW

+72 -L-
13.2m(43.31')

+19 -Y3-
PROP RW

+10 -L-
15.5m(50.85')

JAMES E. HOLTON, JR
DB 2308 PG 315

+21.5 -Y3-
EXIST RW

+32.5 -Y3-
11.6m(38.06')&
EXIST RW

+72 -L-
13.2m(43.31')

+19 -Y3-
PROP RW

+10 -L-
15.5m(50.85')

JAMES E. HOLTON, JR
DB 2308 PG 315

+21.5 -Y3-
EXIST RW

+32.5 -Y3-
11.6m(38.06')&
EXIST RW

+72 -L-
13.2m(43.31')

+19 -Y3-
PROP RW

+10 -L-
15.5m(50.85')

JAMES E. HOLTON, JR
DB 2308 PG 315

+21.5 -Y3-
EXIST RW

+32.5 -Y3-
11.6m(38.06')&
EXIST RW

+72 -L-
13.2m(43.31')

+19 -Y3-
PROP RW

+10 -L-
15.5m(50.85')

JAMES E. HOLTON, JR
DB 2308 PG 315

+21.5 -Y3-
EXIST RW

+32.5 -Y3-
11.6m(38.06')&
EXIST RW

+72 -L-
13.2m(43.31')

+19 -Y3-
PROP RW

+10 -L-
15.5m(50.85')

JAMES E. HOLTON, JR
DB 2308 PG 315

+21.5 -Y3-
EXIST RW

+32.5 -Y3-
11.6m(38.06')&
EXIST RW

+72 -L-
13.2m(43.31')

+19 -Y3-
PROP RW

+10 -L-
15.5m(50.85')

JAMES E. HOLTON, JR
DB 2308 PG 315

+21.5 -Y3-
EXIST RW

+32.5 -Y3-
11.6m(38.06')&
EXIST RW

+72 -L-
13.2m(43.31')