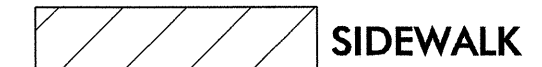


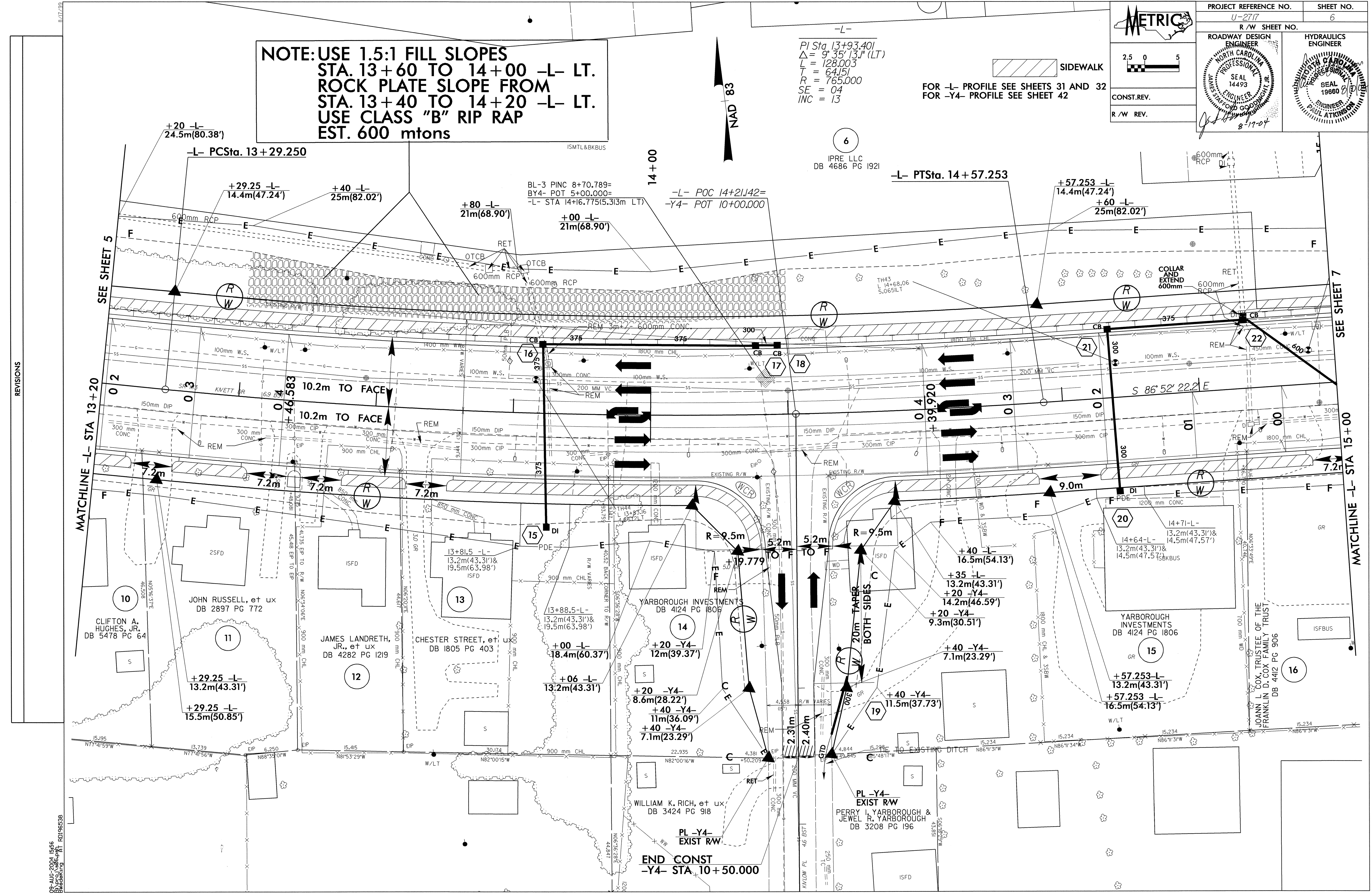
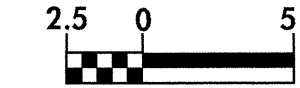
PROJECT REFERENCE NO. U-2717	SHEET NO. 6
R/W SHEET NO.	
ROADWAY DESIGN ENGINEER NORTH CAROLINA PROFESSIONAL ENGINEER SEAL 14493 JAMES STARFOOD GOODEN, JR. 8-17-04	HYDRAULICS ENGINEER NORTH CAROLINA PROFESSIONAL ENGINEER SEAL 19660 PAUL ATKINSON
CONST. REV.	
R/W REV.	

**NOTE: USE 1.5:1 FILL SLOPES  
STA. 13+60 TO 14+00 -L- LT.  
ROCK PLATE SLOPE FROM  
STA. 13+40 TO 14+20 -L- LT.  
USE CLASS "B" RIP RAP  
EST. 600 mtons**

PI Sta 13+93.40/  
Δ = 9° 35' 13.1" (LT)  
L = 128.005  
L = 64.151  
R = 765.000  
SE = 04  
INC = 13



FOR -L- PROFILE SEE SHEETS 31 AND 32  
FOR -Y4- PROFILE SEE SHEET 42



REVISIONS

08-AUG-2004 15:56  
B:\PCO\1466.dwg  
BWedeking rd-04oce38