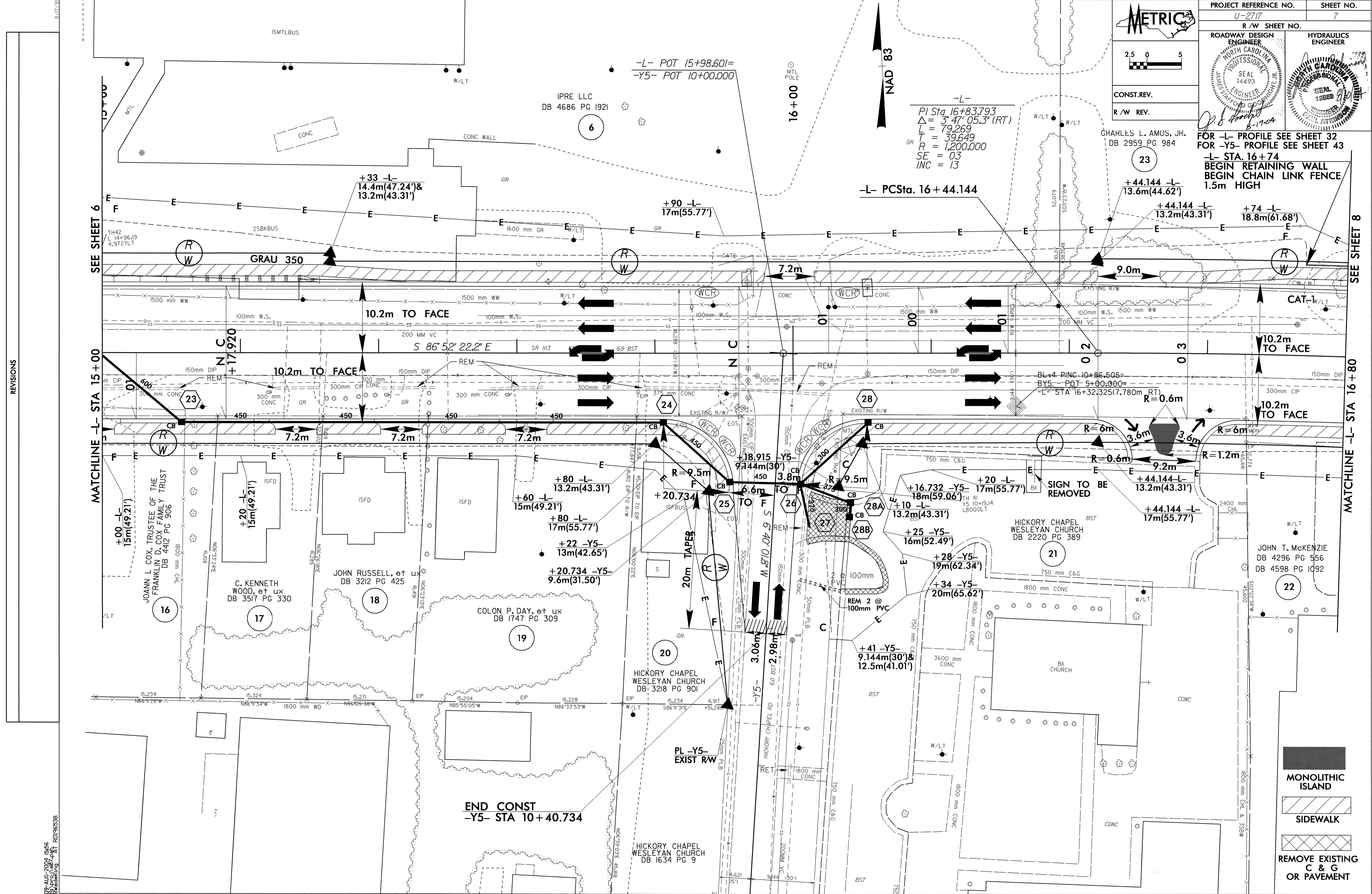


**METRIC**

CONST. REV.  
R/W REV.

PROJECT REFERENCE NO. U-2717	SHEET NO. 7
R/W SHEET NO.	
ROADWAY DESIGN ENGINEER NORTH CAROLINA PROFESSIONAL SEAL 14493 JAMES STAFFORD GOOD	HYDRAULICS ENGINEER NORTH CAROLINA PROFESSIONAL SEAL 18888 CHARLES L. AMOS, JR.

FOR -L- PROFILE SEE SHEET 32  
FOR -Y5- PROFILE SEE SHEET 43  
-L- STA. 16+74  
BEGIN RETAINING WALL  
BEGIN CHAIN LINK FENCE  
1.5m HIGH



- MONOLITHIC ISLAND
- SIDEWALK
- REMOVE EXISTING C & G OR PAVEMENT

REVISIONS

05-AUG-2004 15:56  
BWedeking rd-040ce34