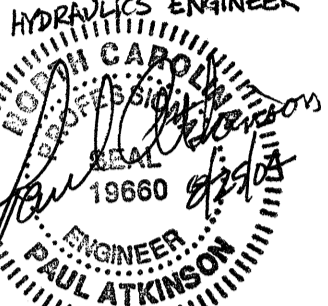
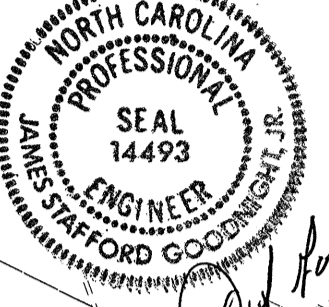
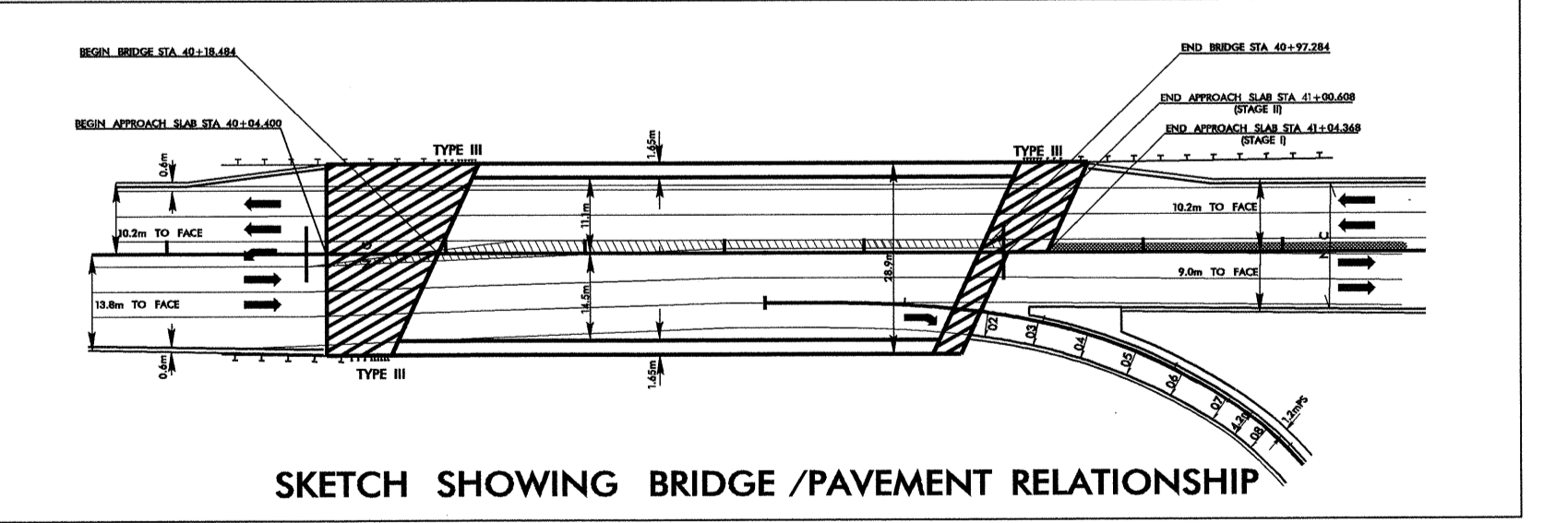
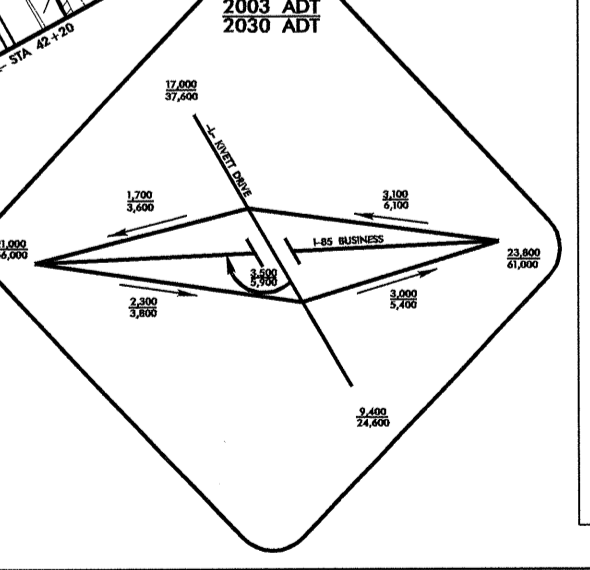
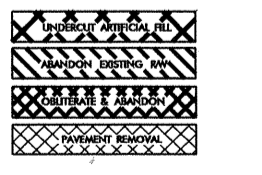


REVISIONS

NO.	DESCRIPTION	DATE

PROJECT REFERENCE NO. U-277	SHEET NO. 21
ROADWAY DESIGN ENGINEER	HYDRAULICS ENGINEER
CONST. REV.	R/W REV.



LOCATION: I-85 BUS AND KINETT DIVE IN HIGH POINT	COUNTY: GULFORD
DESIGNED BY:	DATE:
CHECKED BY:	DATE: