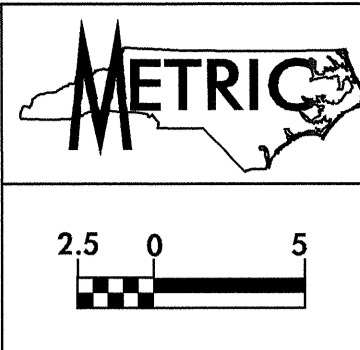


8/17/04

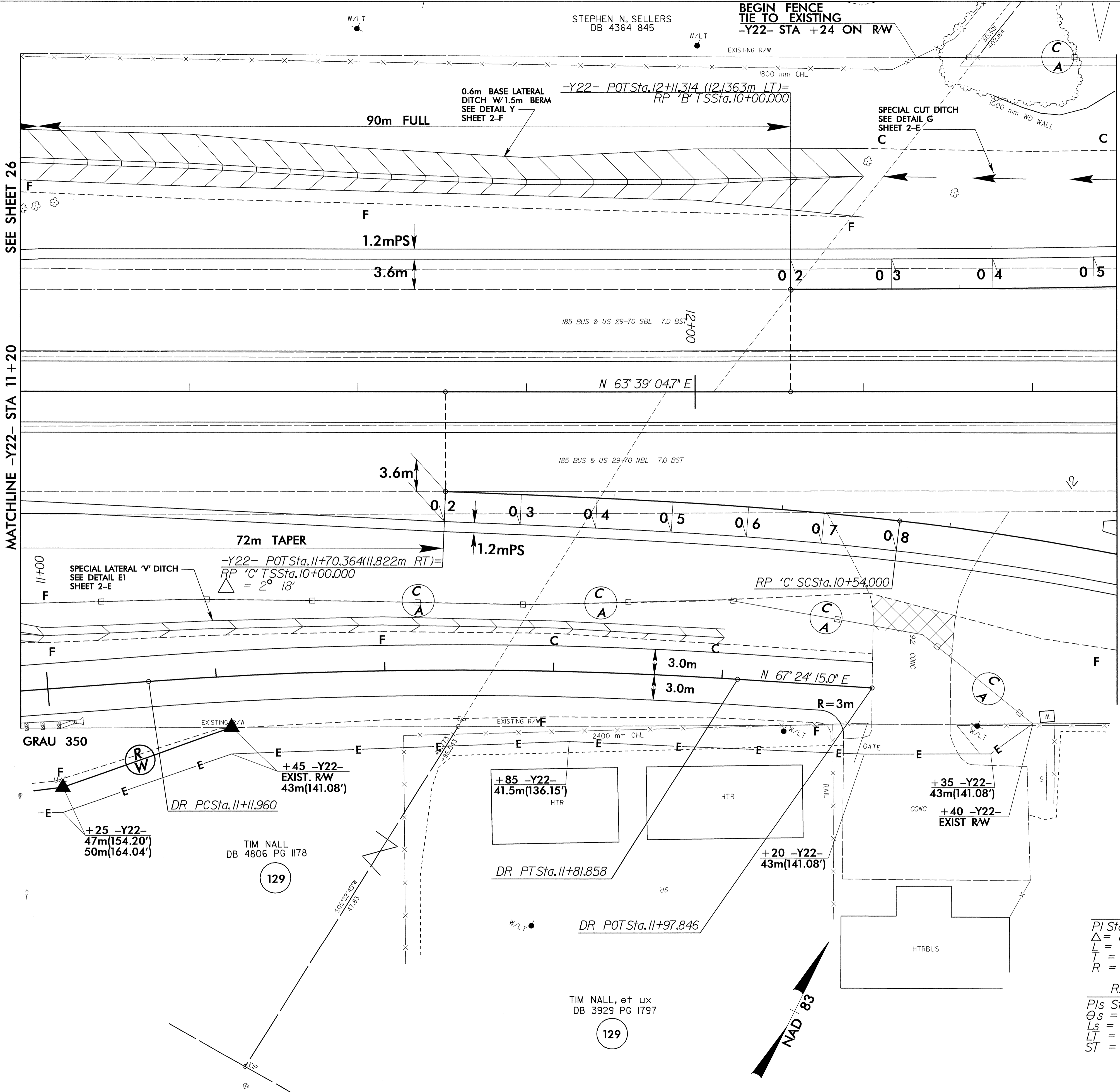
STEPHEN N. SELLERS
DB 4364 845

BEGIN FENCE
TIE TO EXISTING
-Y22- STA +24 ON RW



PROJECT REFERENCE NO. U-2717	SHEET NO. 27
R/W SHEET NO.	
ROADWAY DESIGN ENGINEER NORTH CAROLINA PROFESSIONAL SEAL 14493 WILLIAM STEFFORD GOODRICH, JR.	HYDRAULICS ENGINEER NORTH CAROLINA PROFESSIONAL SEAL 19860 PAUL ATKINSON
CONST.REV.	
R/W REV.	

FOR RAMP 'B' PROFILE SEE SHEET 54
FOR RAMP 'C' PROFILE SEE SHEETS 55 AND 56
FOR -DR- PROFILE SEE SHEET 59
FOR -Y22- PROFILE SEE SHEETS 60 TO 63



SEE SHEET 26

MATCHLINE -Y22- STA 11+20

SEE SHEET 21

MATCHLINE -Y22- STA 12+50

REVISIONS

08-AUG-2004 15:47
S:\Projects\196538\RD\196538

-DR-	
PI Sta 11+46.966	
$\Delta = 8^{\circ} 00' 34.5" (RT)$	
L = 69.897	
T = 35.005	
R = 500.000	
RAMP 'C'	
Pls Sta 10+36.011	Pls Sta 10+48.013
$\theta_s = 4^{\circ} 25' 11.9"$	$\theta_s = 4^{\circ} 07' 31.1"$
Ls = 54.000	Ls = 72.000
LT = 36.011	LT = 48.013
ST = 18.010	ST = 24.012