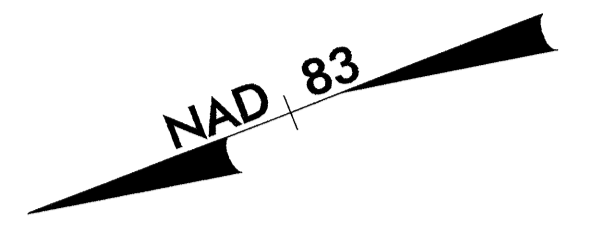


METRIC

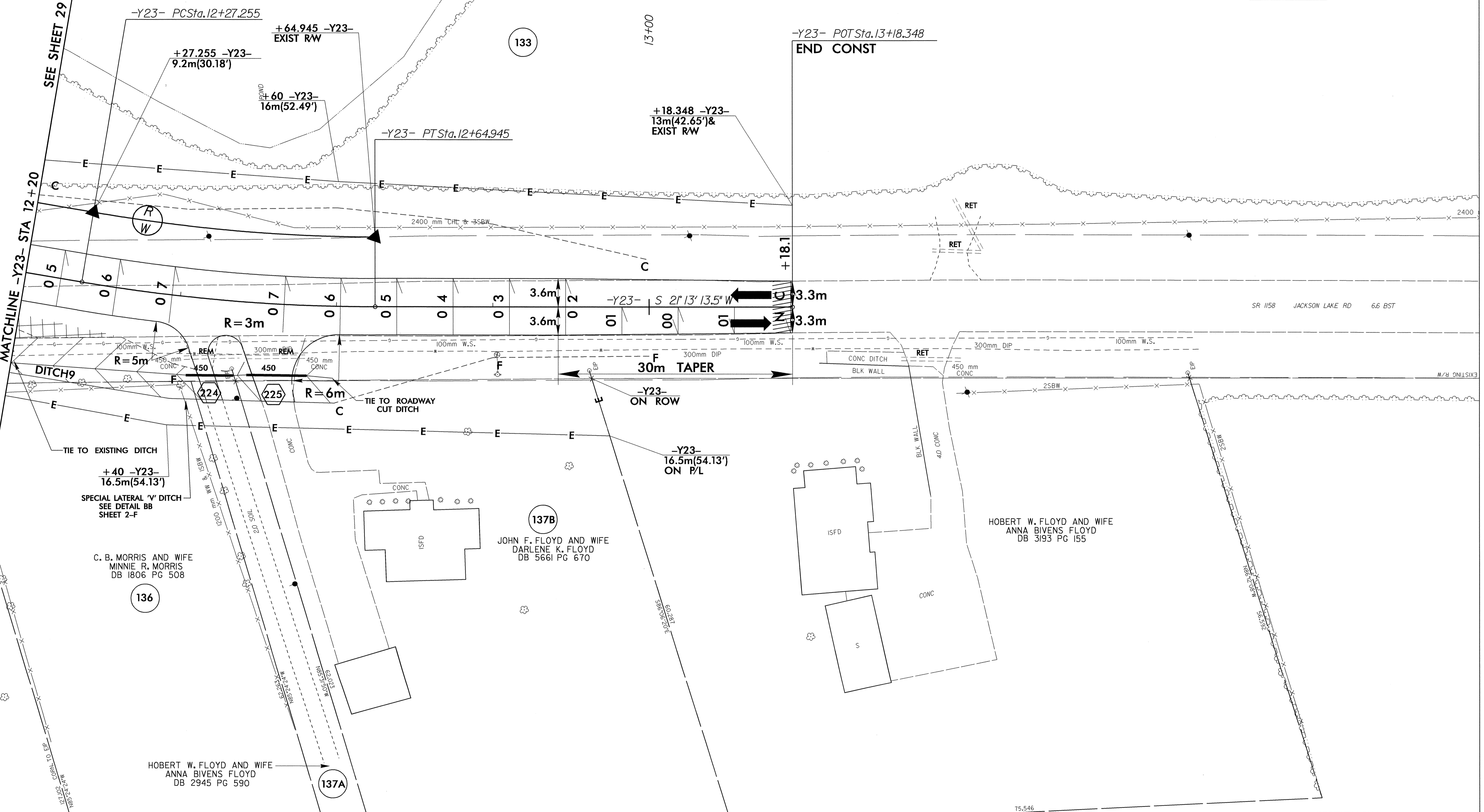
CONST. REV.
R/W REV.

PROJECT REFERENCE NO.	U-2717	SHEET NO.	30
R/W SHEET NO.			
ROADWAY DESIGN			
HYDRAULICS			

FOR -Y23- PROFILE SEE SHEET 51



-Y23-
 PI Sta. 12+46.144
 $\Delta = 9^{\circ} 35' 52.0''$ (LT)
 L = 37.691
 T = 18.890
 R = 225.000
 SE = 07
 INC = 7.2



REVISIONS

04-AUG-2004 14:37
 B:\PROJECTS\04-08-04\RD196538

HOBERT W. FLOYD AND WIFE
 ANNA BIVENS FLOYD
 DB 2945 PG 590

HOBERT W. FLOYD AND WIFE
 ANNA BIVENS FLOYD
 DB 3193 PG 155

JOHN F. FLOYD AND WIFE
 DARLENE K. FLOYD
 DB 5661 PG 670

C. B. MORRIS AND WIFE
 MINNIE R. MORRIS
 DB 1806 PG 508