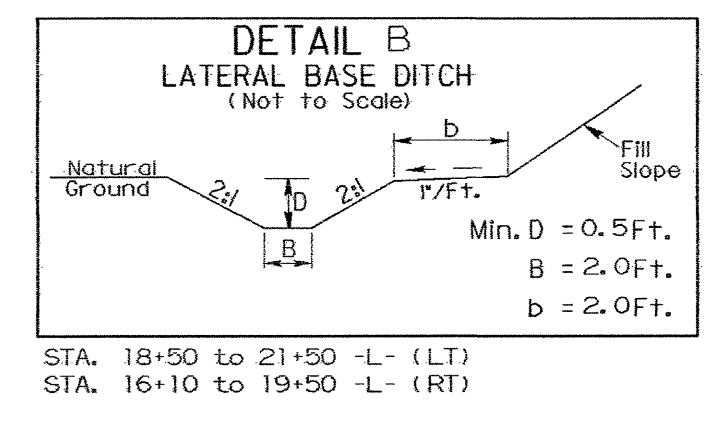
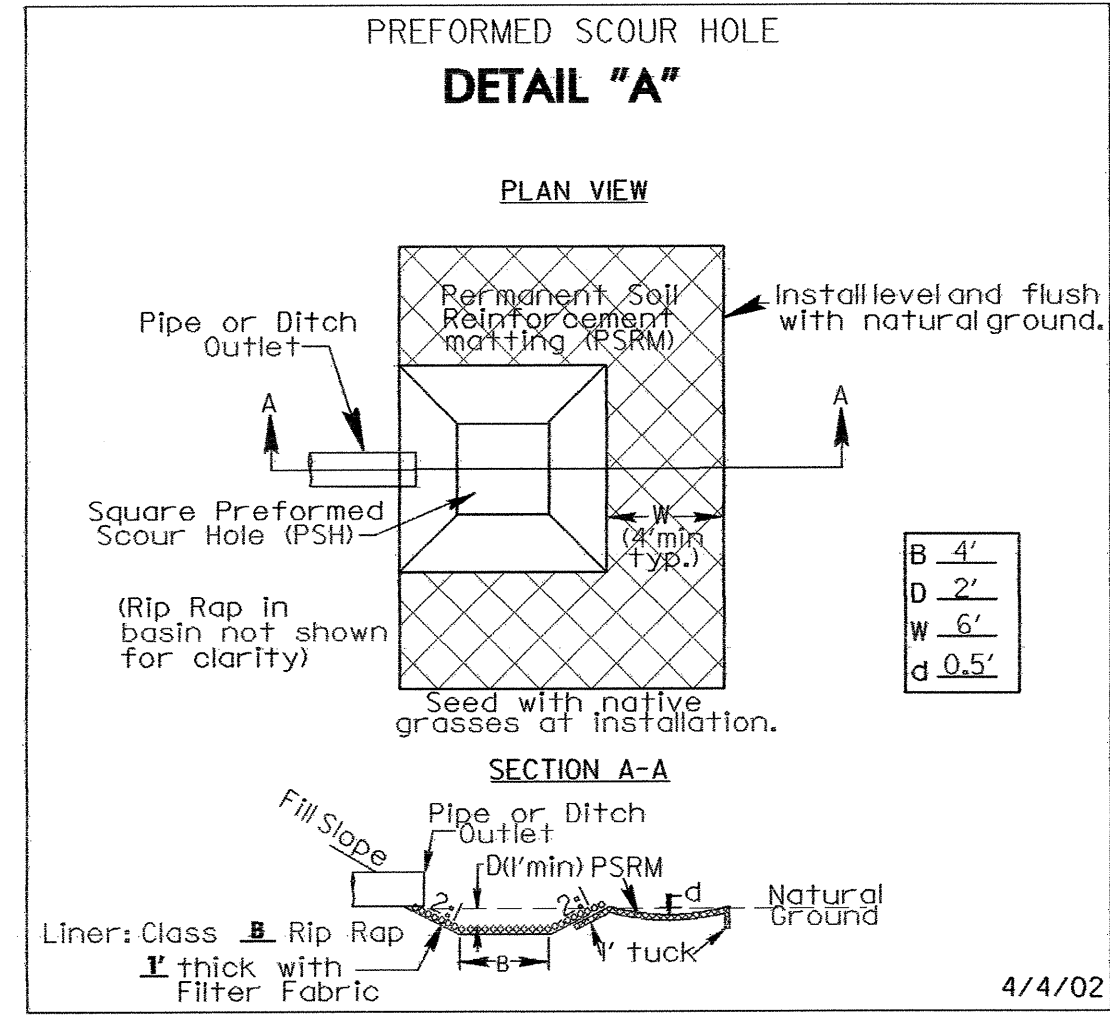
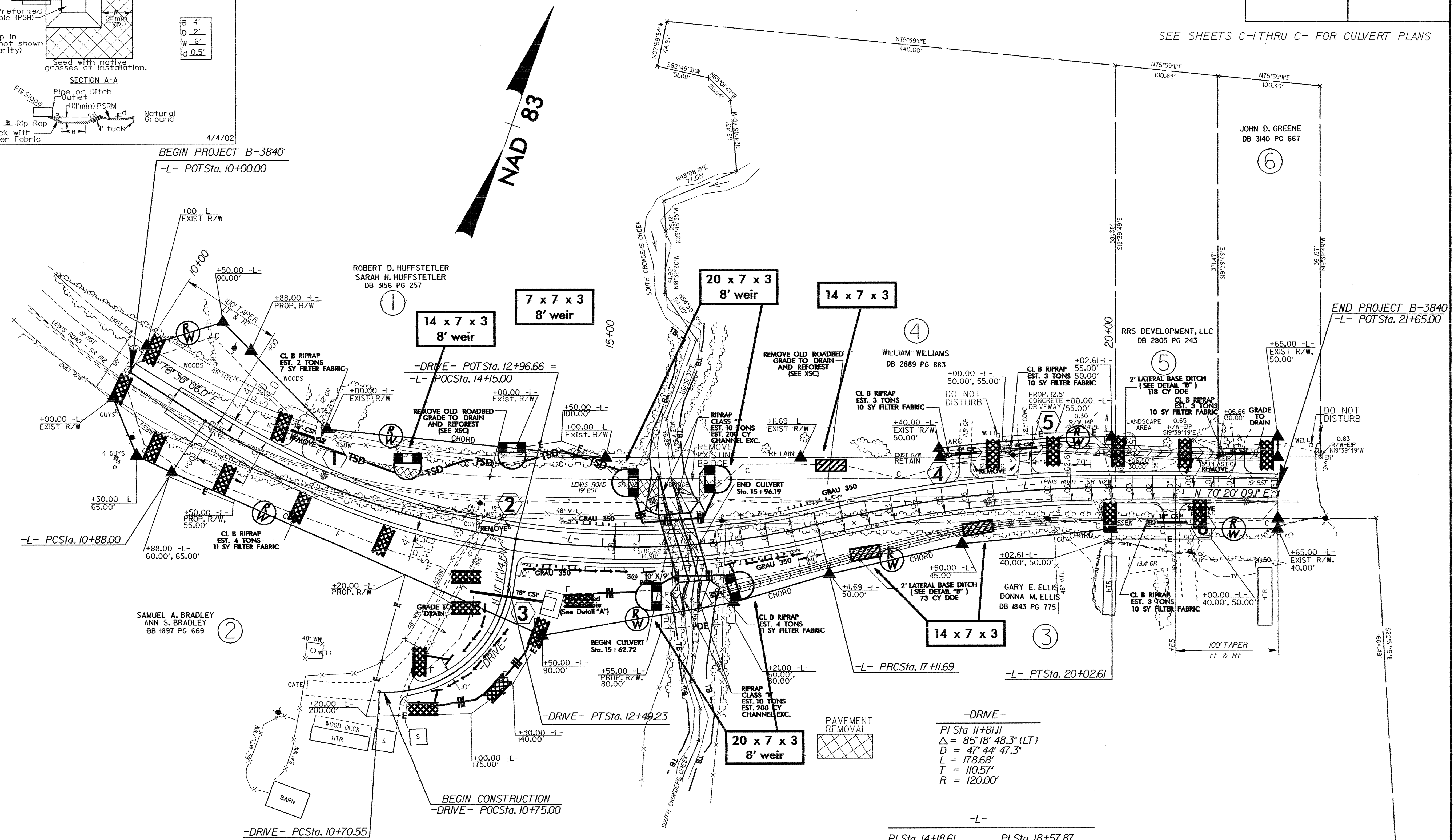


PROJECT REFERENCE NO. B-3840		SHEET NO. EC-5/CONST. 4	
RW SHEET NO.			
ROADWAY DESIGN ENGINEER		HYDRAULICS ENGINEER	



SEE SHEETS C-1 THRU C- FOR CULVERT PLANS



-L- PI Sta 14+18.61 $\Delta = 47^{\circ} 01' 10.0''$ (LT) $D = 7' 32' 20.1''$ $L = 623.69'$ $T = 330.61'$ $R = 760.00'$ $RO = \text{SEE PLANS}$ $SE = 0.08$	-L- PI Sta 18+57.87 $\Delta = 13^{\circ} 53' 25.1''$ (RT) $D = 4' 46' 28.7''$ $L = 290.92'$ $T = 146.18'$ $R = 1200.00'$ $RO = \text{SEE PLANS}$ $SE = 0.07$
---	--

NOTE: TIE ALL DRIVEWAYS WITH A 10' RADIUS  
 NOTE: SEE SHEET NO. 5 FOR -L- PROFILE  
 NOTE: SEE SHEET NO. 5 FOR -DRIVE- PROFILE