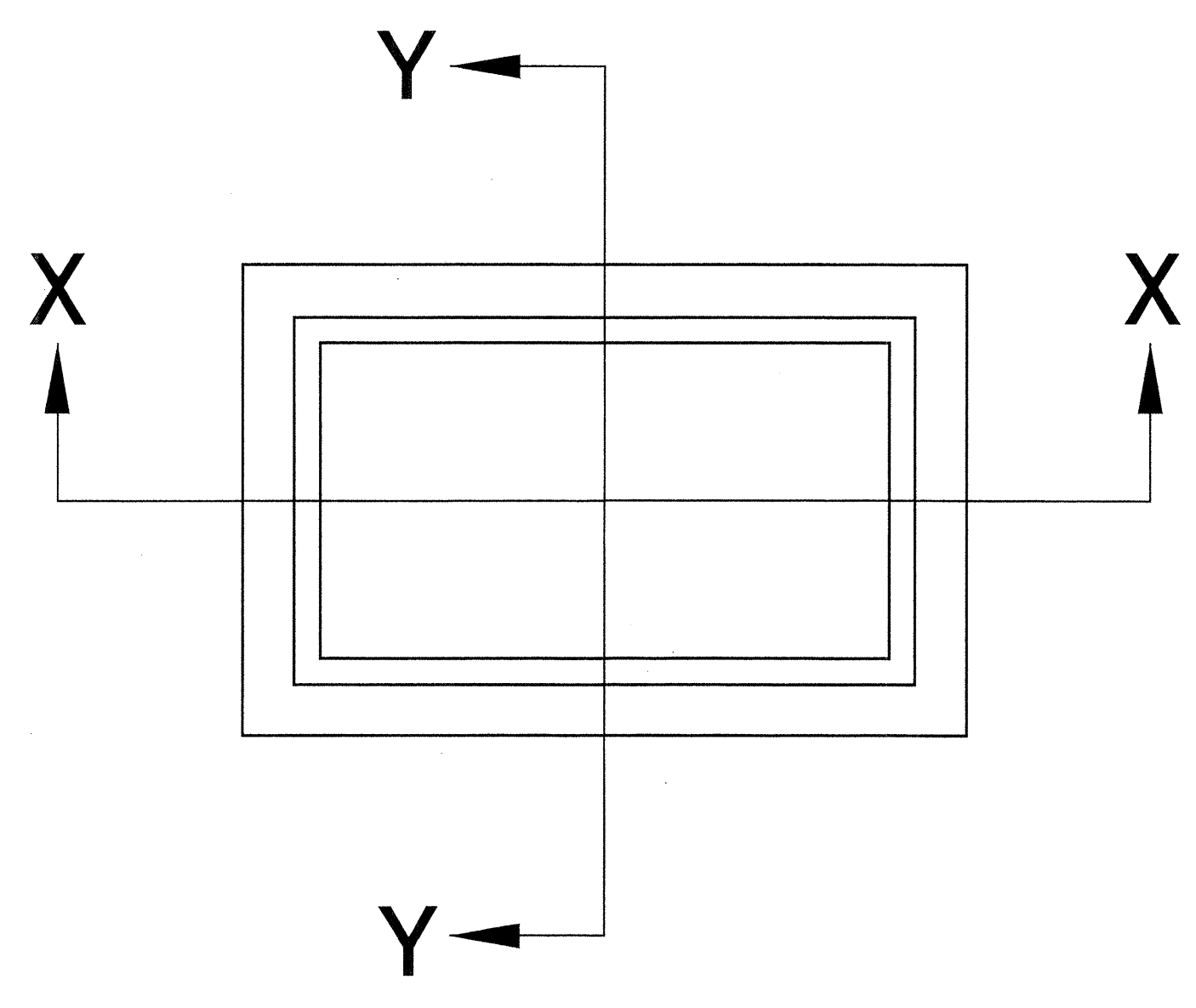
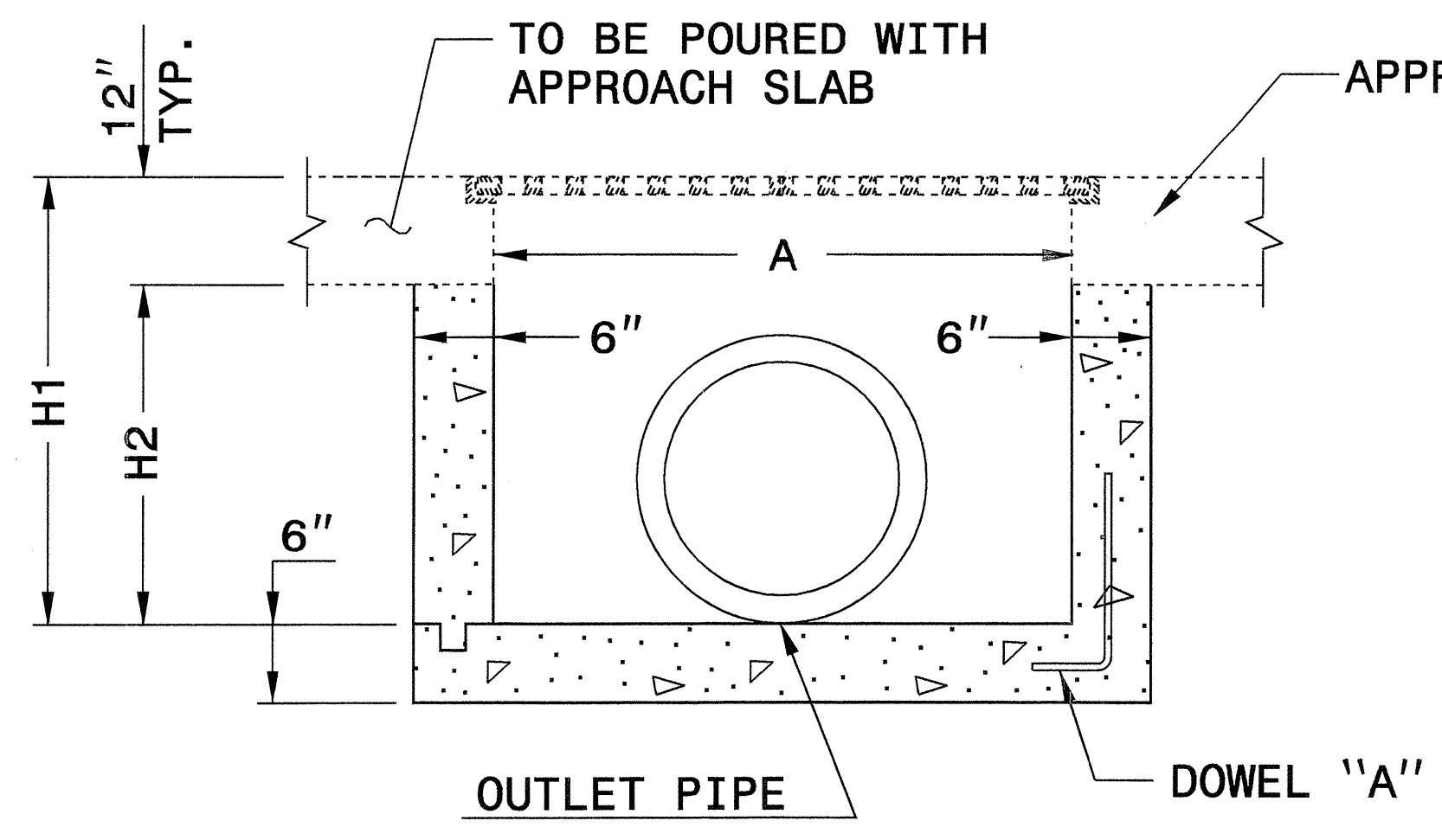


**GENERAL NOTES:**

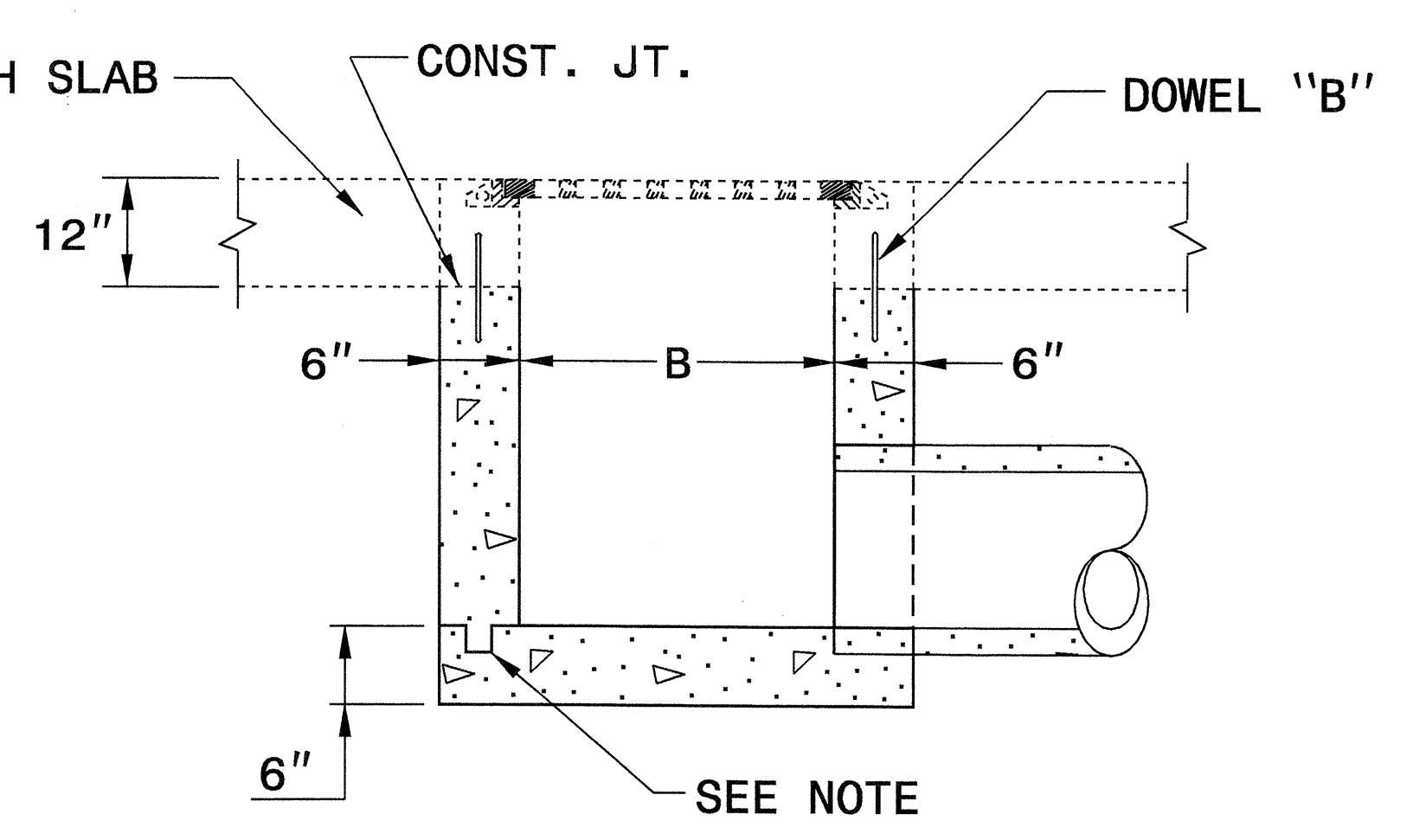
- USE CLASS "B" CONCRETE THROUGHOUT.
- PROVIDE ALL DROP INLETS OVER 3'-6" IN DEPTH WITH STEPS 12" ON CENTER.
- USE STEPS WHICH COMPLY WITH STD. DRAWING 840.66.
- OPTIONAL CONSTRUCTION - MONOLITHIC POUR, 2" KEYWAY, OR #4 BAR DOWELS AT 12" CENTERS AS DIRECTED BY THE ENGINEER.
- USE FORMS FOR THE CONSTRUCTION OF THE BOTTOM SLAB.
- IF REINFORCED CONCRETE PIPE IS SET IN BOTTOM SLAB OF BOX, ADD TO SLAB AS SHOWN ON STD. NO. 840.00.
- #4 BAR DOWELS "B" AT 12" CENTERS.
- MAX. DEPTH OF THIS STRUCTURE FROM TOP OF BOTTOM SLAB TO TOP ELEVATION IS 12 FEET.
- FOR LOCATIONS OF DROP INLET, SEE BRIDGE APPROACH SLABS IN THE STRUCTURE PLANS.
- CONSTRUCT WITH PIPE CROWNS MATCHING.
- DRAWING NOT TO SCALE.



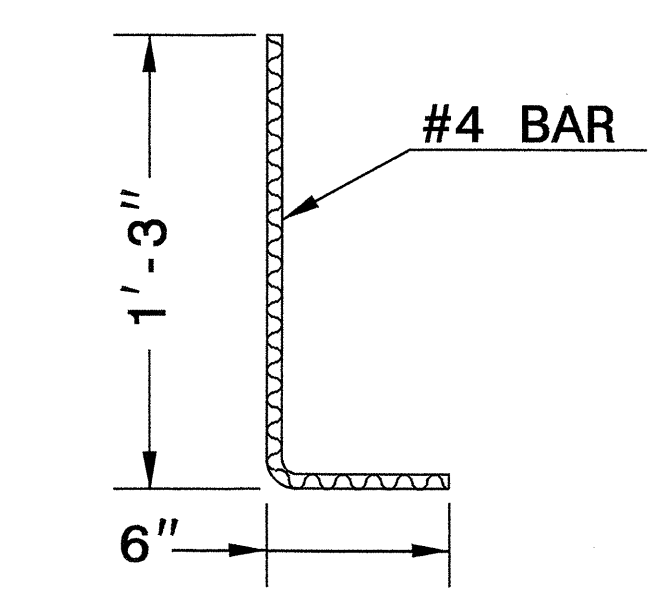
**PLAN**



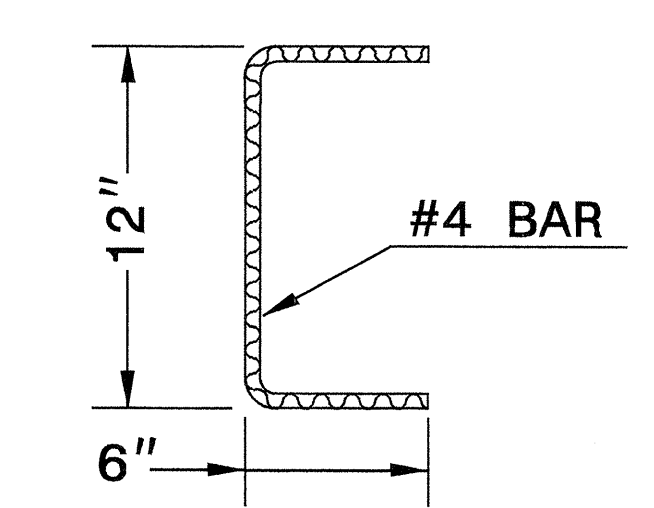
**SECTION X-X**



**SECTION Y-Y**

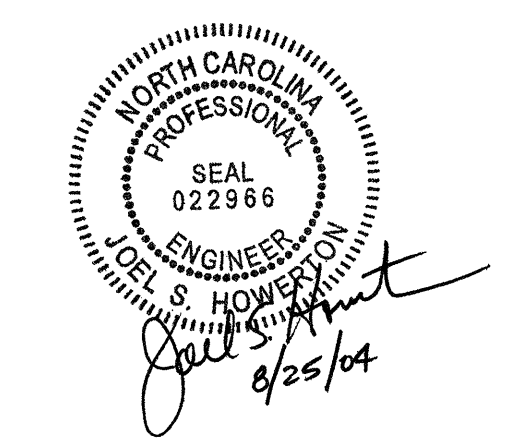


**DOWEL "A"**



**DOWEL "B"**

| MINIMUM DIMENSIONS AND QUANTITIES FOR CONCRETE DROP INLET |       |       |        |        |                                |               |              |       |                         |       |
|---|-------|-------|--------|--------|--------------------------------|---------------|--------------|-------|-------------------------|-------|
| PIPE  | SPAN  | WIDTH | HEIGHT | HEIGHT | CUBIC YARDS OF CONCRETE IN BOX |               |              |       | DEDUCTIONS FOR ONE PIPE |       |
|   |       |       |        |        | BOTTOM SLAB                    | H PER FT. HT. | H MIN. TOTAL | TOTAL | C.S.                    | R.C.  |
| 12"   | 3'-8" | 2'-0" | 2'-6"  | 1'-6"  | 0.259                          | 0.247         | 0.597        | 0.856 | 0.020                   | 0.032 |
| 15"   | 3'-8" | 2'-0" | 2'-9"  | 1'-9"  | 0.259                          | 0.247         | 0.659        | 0.918 | 0.023                   | 0.036 |
| 18"   | 3'-8" | 2'-0" | 3'-0"  | 2'-0"  | 0.259                          | 0.247         | 0.720        | 0.979 | 0.033                   | 0.049 |
| 24"   | 3'-8" | 2'-0" | 3'-6"  | 2'-6"  | 0.259                          | 0.247         | 0.865        | 1.124 | 0.059                   | 0.085 |



**DESIGN SERVICES UNIT  
STANDARDS AND SPECIAL DESIGN**  
Office 919-250-4128 FAX 919-250-4119

**DETAIL FOR CONCRETE  
BRIDGE APPROACH  
DROP INLET**

ORIGINAL BY: T. Spell DATE: 04-07-04  
 MODIFIED BY: DATE:   
 CHECKED BY: C. B. Spell DATE: 4-12-04  
 FILE SPEC.: stds/02stdstdetails/english/840d13.dgn

I2-APR-2004 15:24  
 C:\Users\spell11\AppData\Local\Temp\1\stds\02stdstdetails/english/840d13.dgn  
 spell11 AT 05:00:55