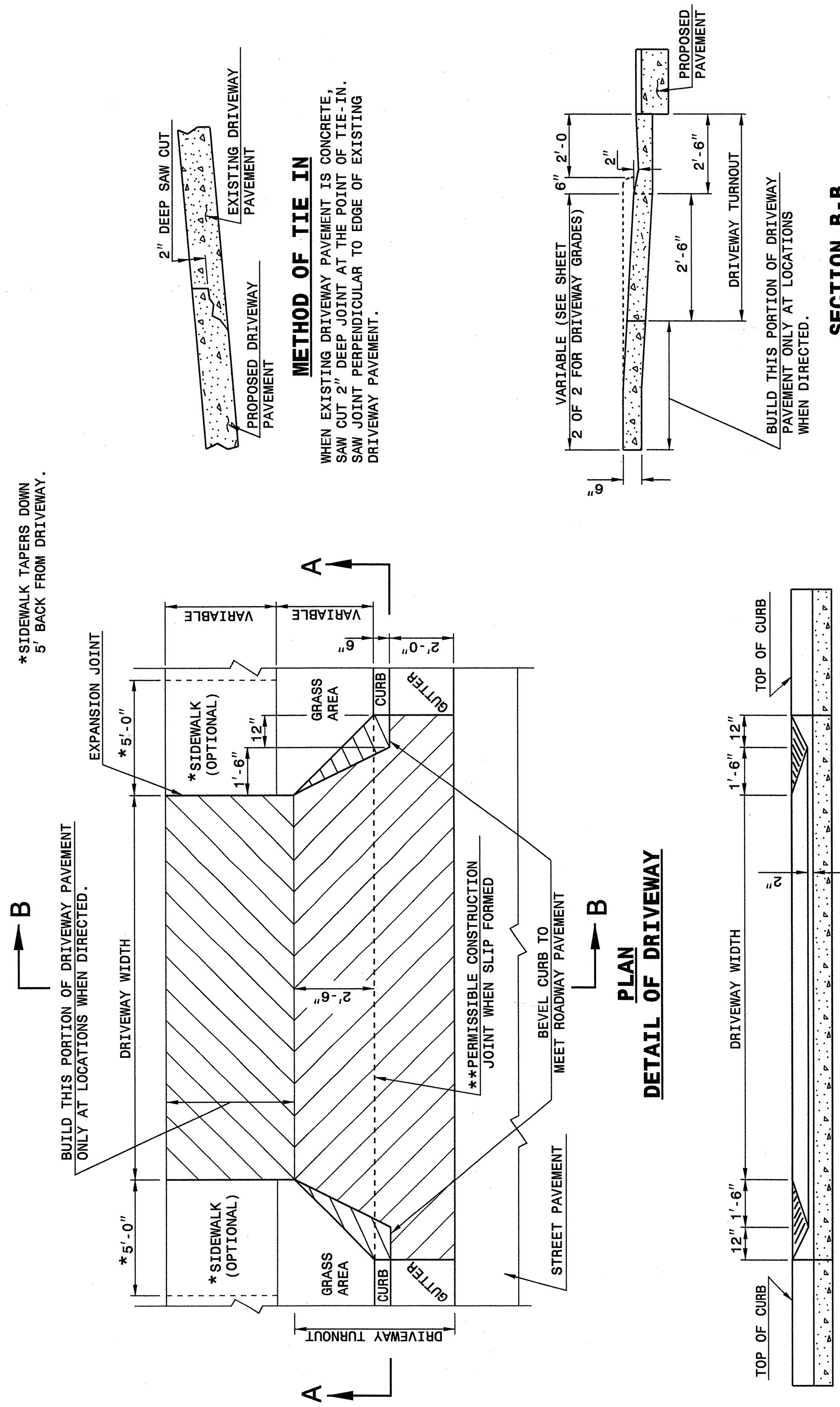


STATE OF NORTH CAROLINA  
DEPT. OF TRANSPORTATION  
DIVISION OF HIGHWAYS  
RALEIGH, N.C.

ENGLISH DETAIL DRAWING FOR  
**DRIVEWAY TURNOUT**  
DROP CURB TYPE

SHEET 1 OF 2  
**848D03**



**METHOD OF TIE IN**  
WHEN EXISTING DRIVEWAY PAVEMENT IS CONCRETE, SAW CUT 2" DEEP JOINT AT THE POINT OF TIE-IN. SAW JOINT PERPENDICULAR TO EDGE OF EXISTING DRIVEWAY PAVEMENT.

**SECTION B-B**  
BUILD THIS PORTION OF DRIVEWAY PAVEMENT ONLY AT LOCATIONS WHEN DIRECTED.

**SECTION A-A**

GENERAL NOTES:  
\*\*NO CONSTRUCTION JOINT WILL BE PERMITTED IF FORMS ARE USED TO CAST DRIVEWAY. SLIP FORMING OF CURB AND GUTTER PERMITS THE USE OF CONSTRUCTION JOINT.

STATE OF NORTH CAROLINA  
DEPT. OF TRANSPORTATION  
DIVISION OF HIGHWAYS  
RALEIGH, N.C.

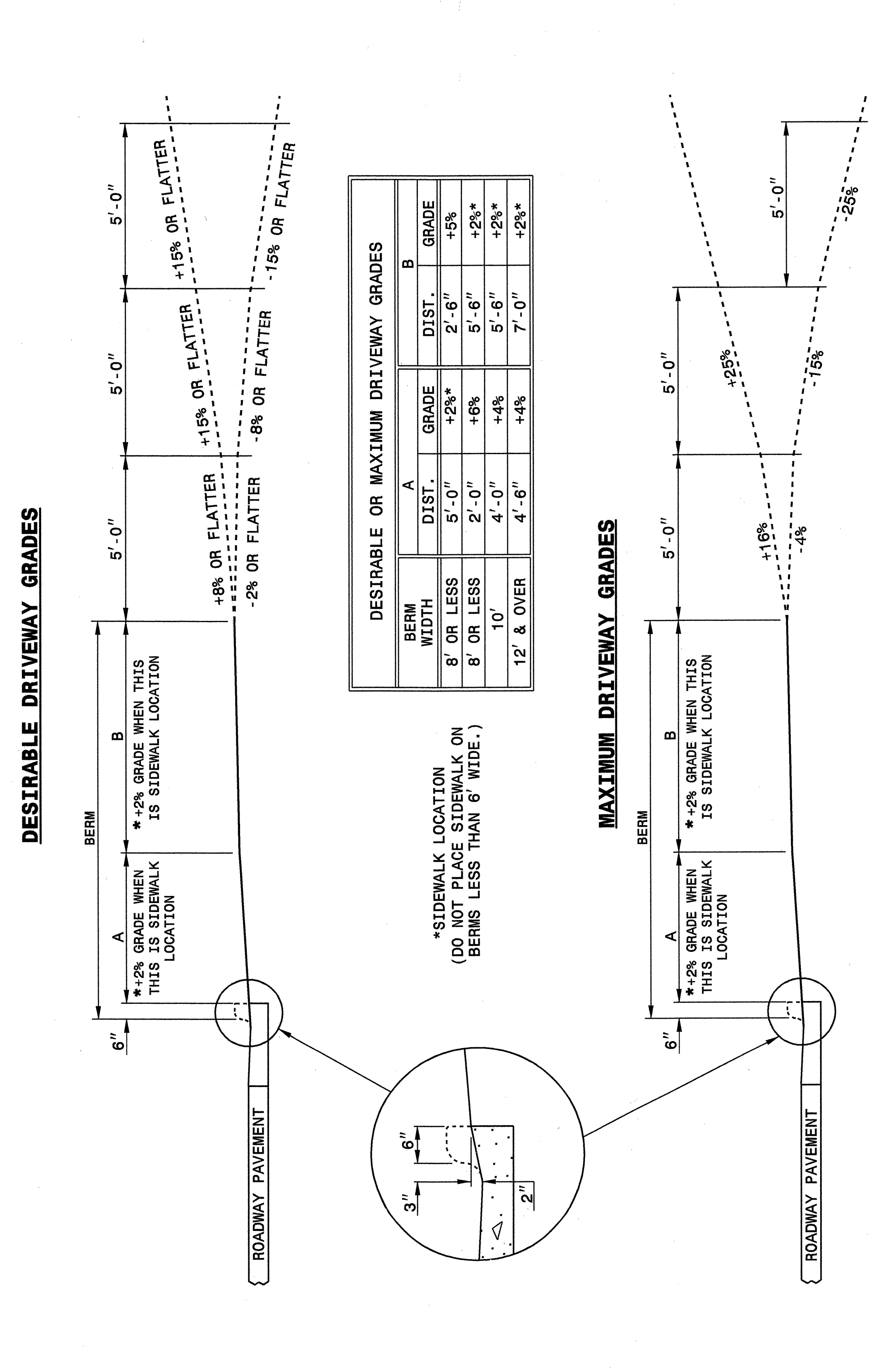
ENGLISH DETAIL DRAWING FOR  
**DRIVEWAY TURNOUT**  
DROP CURB TYPE

SHEET 1 OF 2  
**848D03**

STATE OF NORTH CAROLINA  
DEPT. OF TRANSPORTATION  
DIVISION OF HIGHWAYS  
RALEIGH, N.C.

ENGLISH DETAIL DRAWING FOR  
**DRIVEWAY TURNOUT**  
DRIVEWAY GRADES

SHEET 2 OF 2  
**848D03**



\*SIDEWALK LOCATION (DO NOT PLACE SIDEWALK ON BERMS LESS THAN 6' WIDE.)



STATE OF NORTH CAROLINA  
DEPT. OF TRANSPORTATION  
DIVISION OF HIGHWAYS  
RALEIGH, N.C.

ENGLISH DETAIL DRAWING FOR  
**DRIVEWAY TURNOUT**  
DRIVEWAY GRADES

SHEET 2 OF 2  
**848D03**

**DESIGN SERVICES UNIT**  
STANDARDS AND SPECIAL DESIGN  
Office 919-250-4128 FAX 919-250-4119

**SEE PLATE FOR TITLE**

ORIGINAL BY: 2002 STD. 848.03 DATE:  
MODIFIED BY: E.F. WARD DATE: 03-27-03  
CHECKED BY: [Signature] DATE: 4-4-03  
FILE SPEC.: /usr/std/02todeta2/english/84803/848d03.dgn