
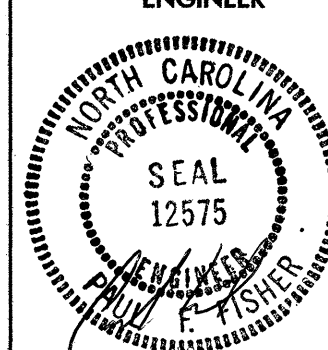
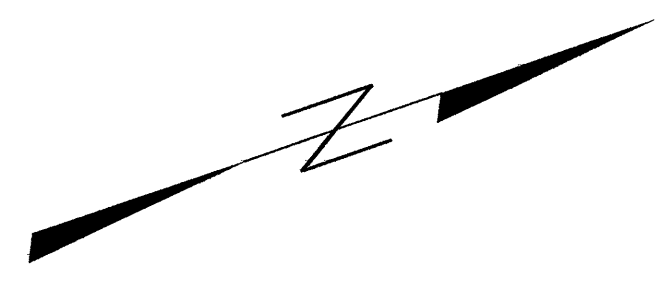


8/17/99

PROJECT REFERENCE NO. 1-2102	SHEET NO. 6
RW SHEET NO. 6	
ROADWAY DESIGN ENGINEER 	HYDRAULICS ENGINEER 

NOTE:
(1) SEE SHEET 10 FOR -L- PROFILE



REVISIONS

VILLAGE OF TANGLEWOOD, LLC
DB 2122 PG 3370
(24)

HARRIS ASSISTED LIVING PROPERTIES, LLC
DB 1991 PG 1249
(18)

CHARLES L. DUNN
DB 581 PG 175
(21)

DAVID B. FLETCHER
AND WIFE
ROBIN S. FLETCHER
DB 1490 PG 16

PHOEBE L. LAMBETH
AND
JEANETTE L. HIGGINS
95E-2001
(19)

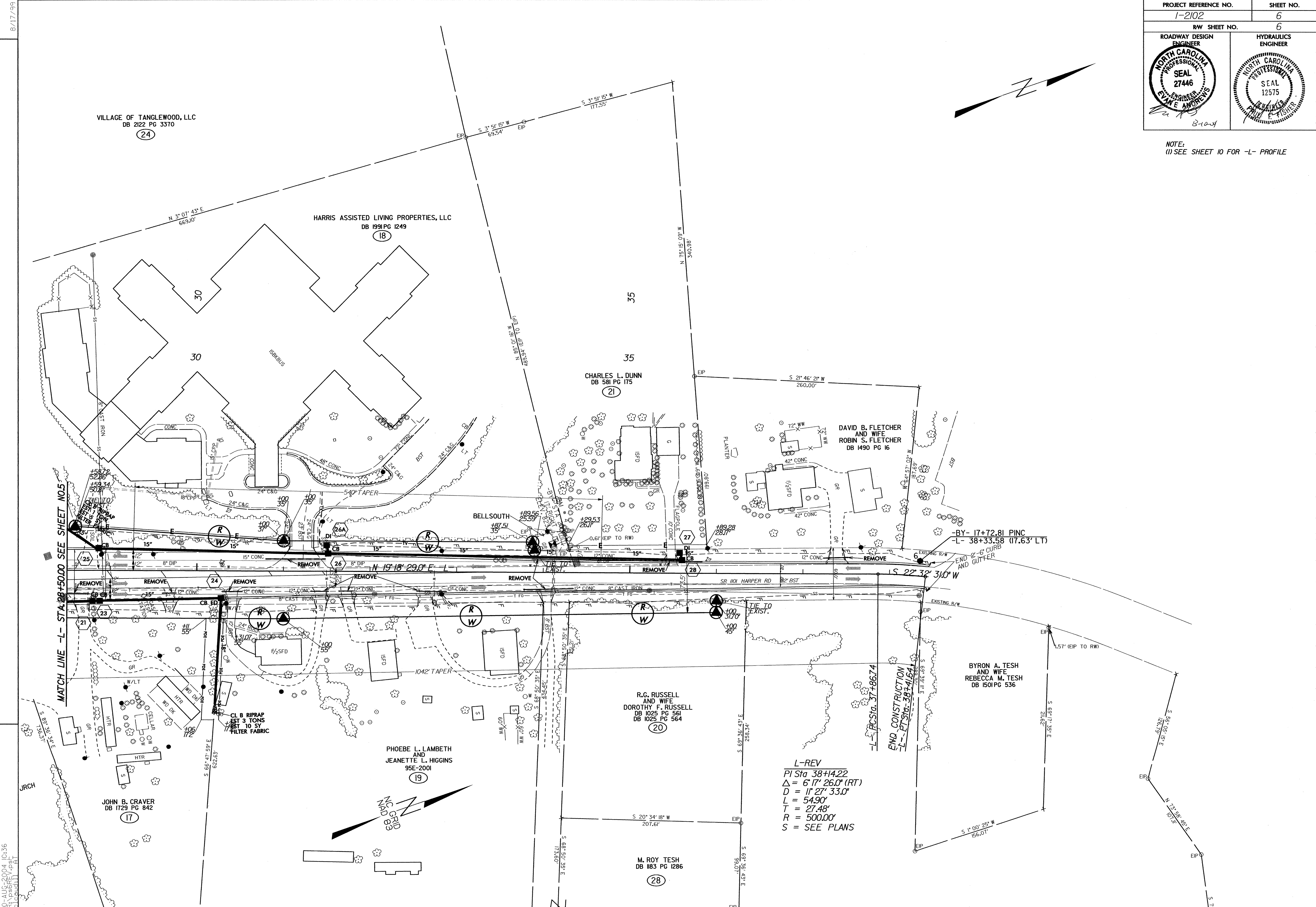
JOHN B. CRAVER
DB 1729 PG 842
(17)

R.G. RUSSELL
AND WIFE
DOROTHY F. RUSSELL
DB 1025 PG 561
DB 1025 PG 564
(20)

BYRON A. TESH
AND WIFE
REBECCA M. TESH
DB 1501 PG 536

M. ROY TESH
DB 1183 PG 1286
(28)

L-REV
 PI Sta 38+14.22
 $\Delta = 6' 17" 26.0" (RT)$
 $D = 11' 27" 33.0"$
 $L = 54.90'$
 $T = 27.48'$
 $R = 500.00'$
 $S = SEE PLANS$



10-AUG-2004 10:36
R:\pss6REV\pss6
E:\schmidt\AT