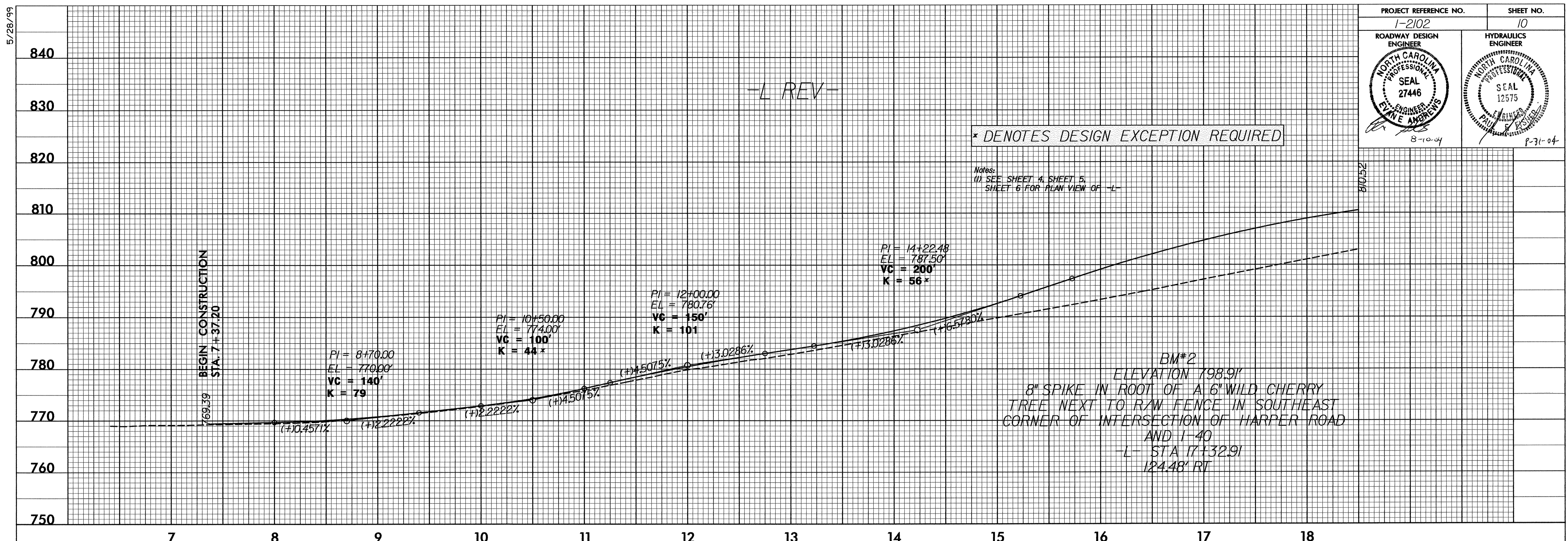


5/28/99

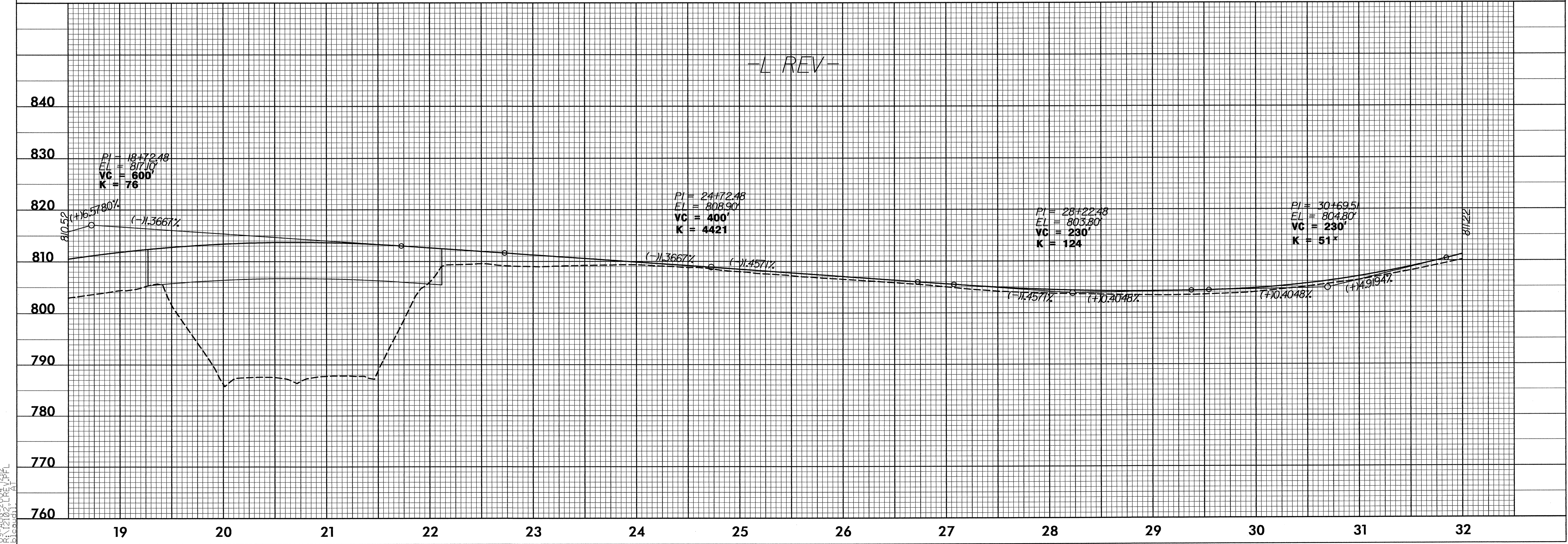
PROJECT REFERENCE NO. 1-2102	SHEET NO. 10
ROADWAY DESIGN ENGINEER NORTH CAROLINA PROFESSIONAL SEAL 27446 E. W. ANDREWS 8-10-04	HYDRAULICS ENGINEER NORTH CAROLINA PROFESSIONAL SEAL 12575 E. W. ANDREWS 8-31-04

* DENOTES DESIGN EXCEPTION REQUIRED

Notes:
(1) SEE SHEET 4, SHEET 5, SHEET 6 FOR PLAN VIEW OF -L-



-L REV-



09-AUG-2004 12:12
P:\2102-REV.PFL
E. W. ANDREWS