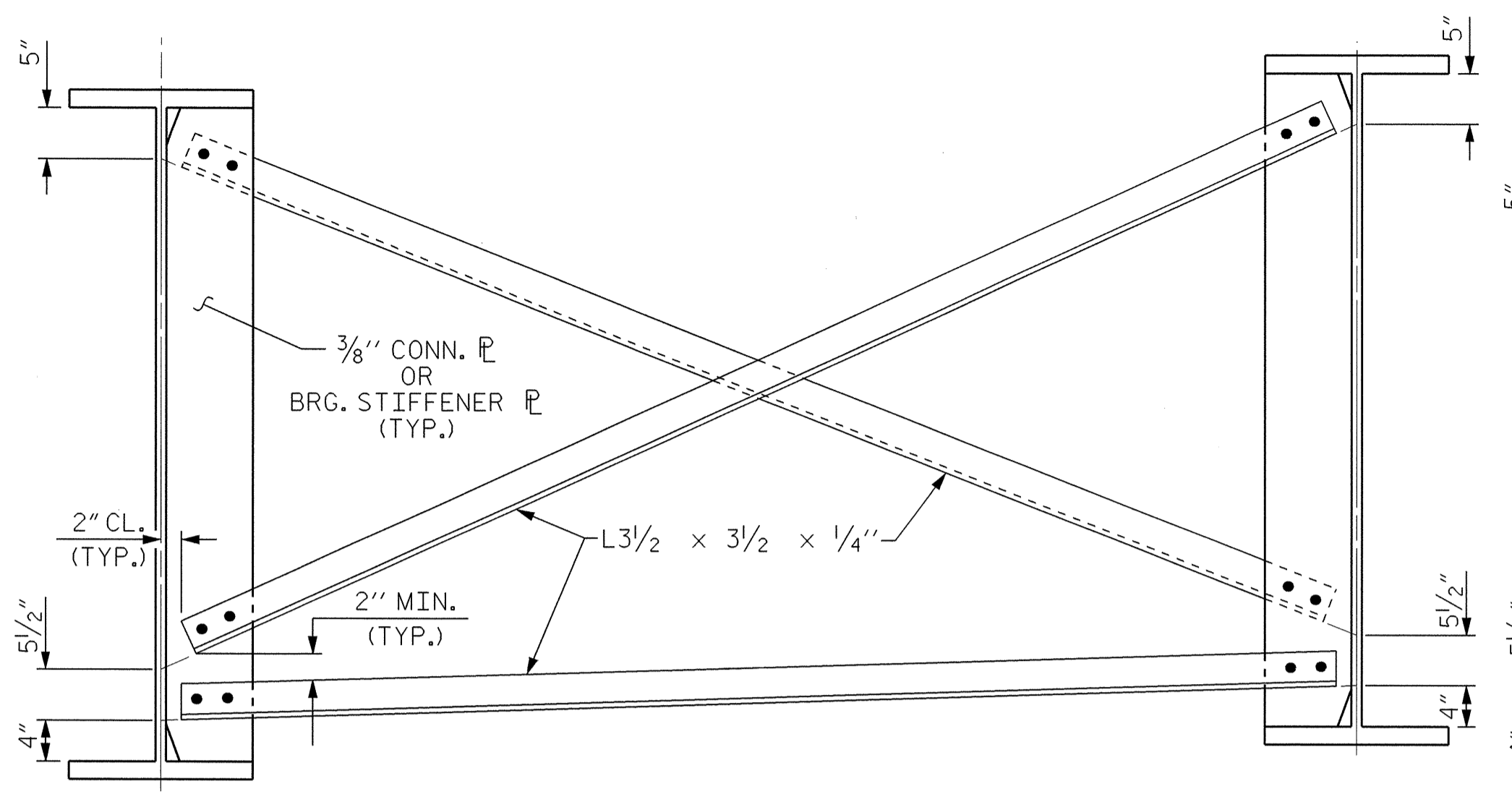
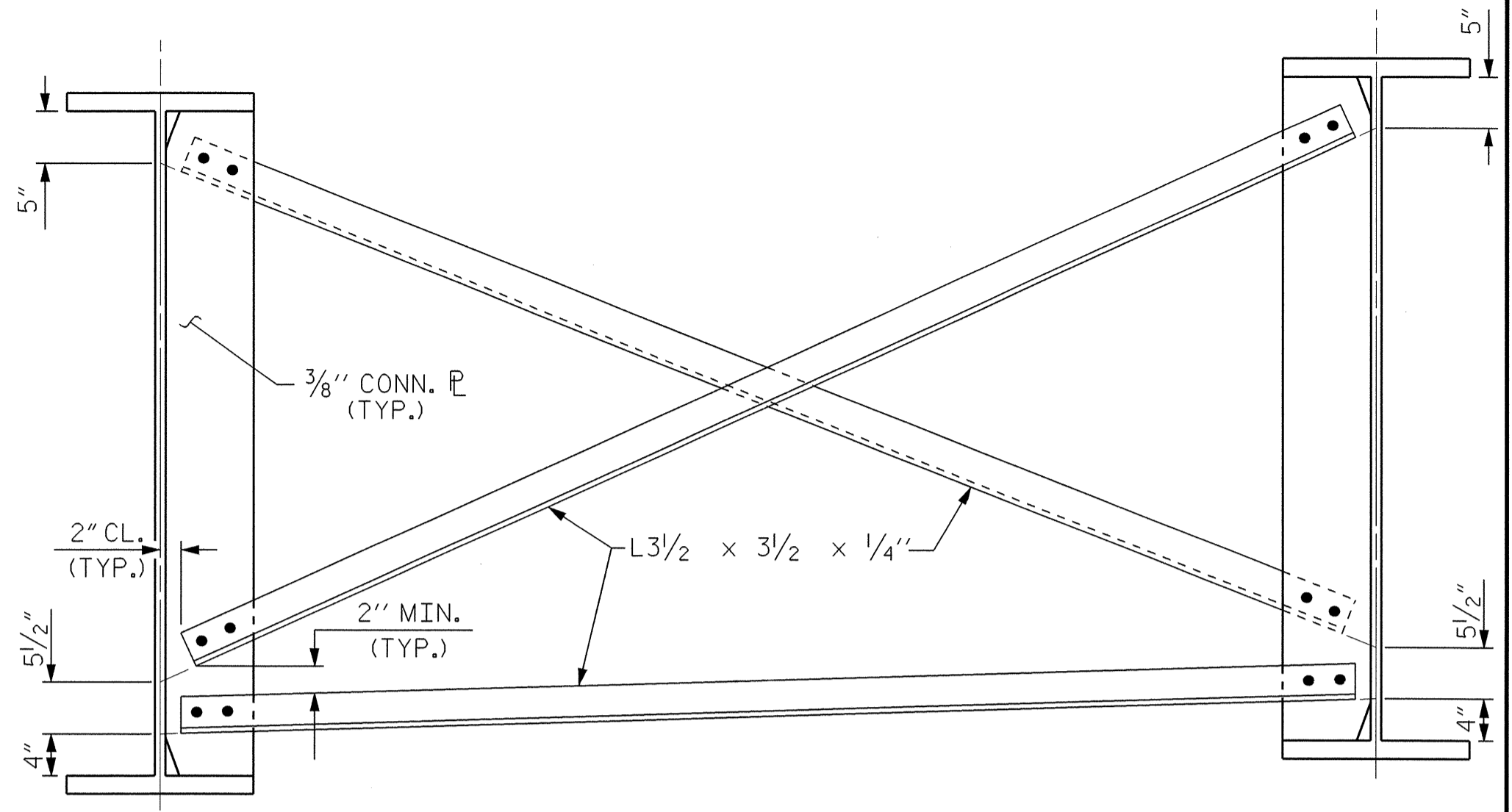


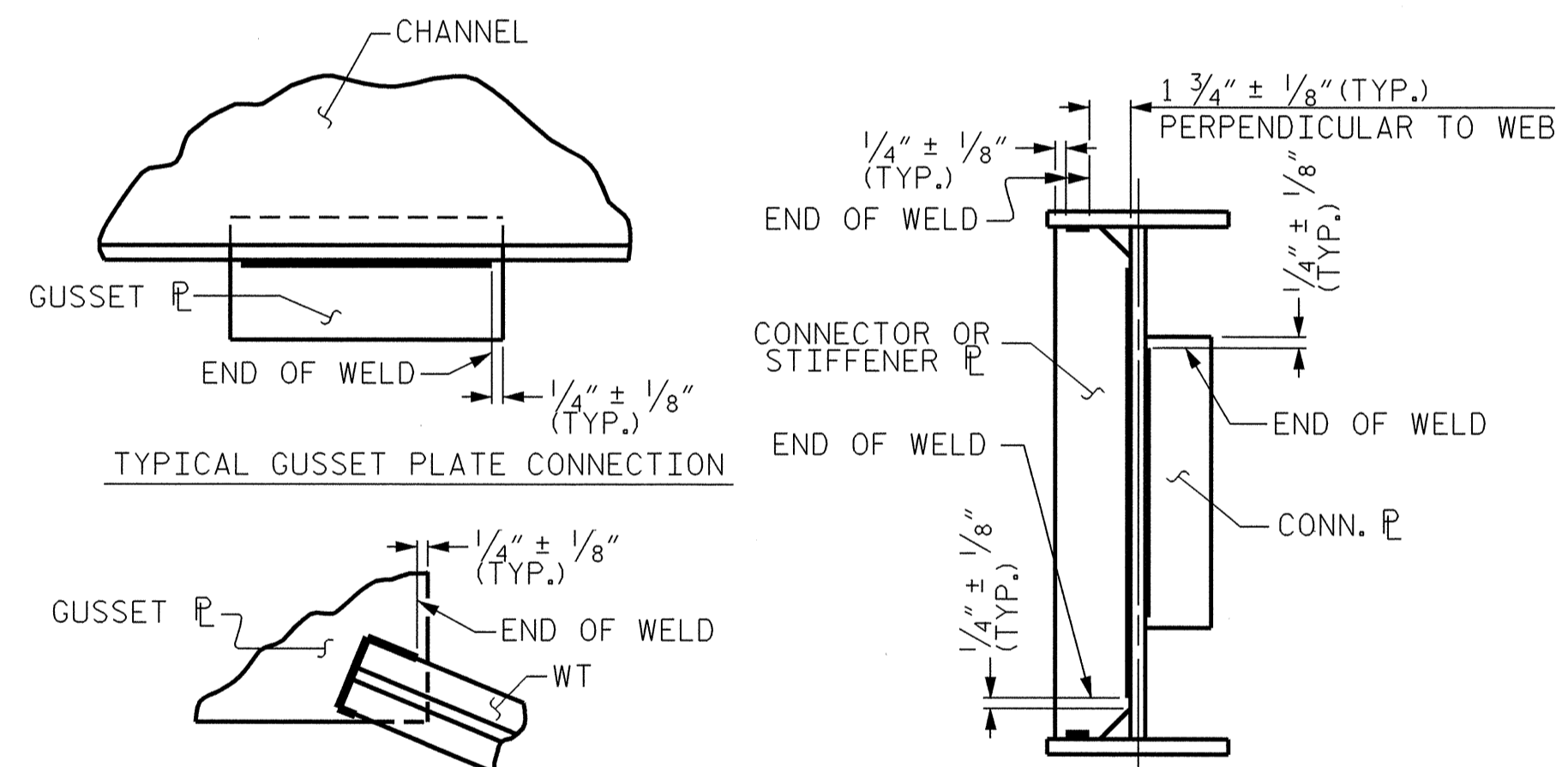
END BENT CROSSFRAME (CF1)



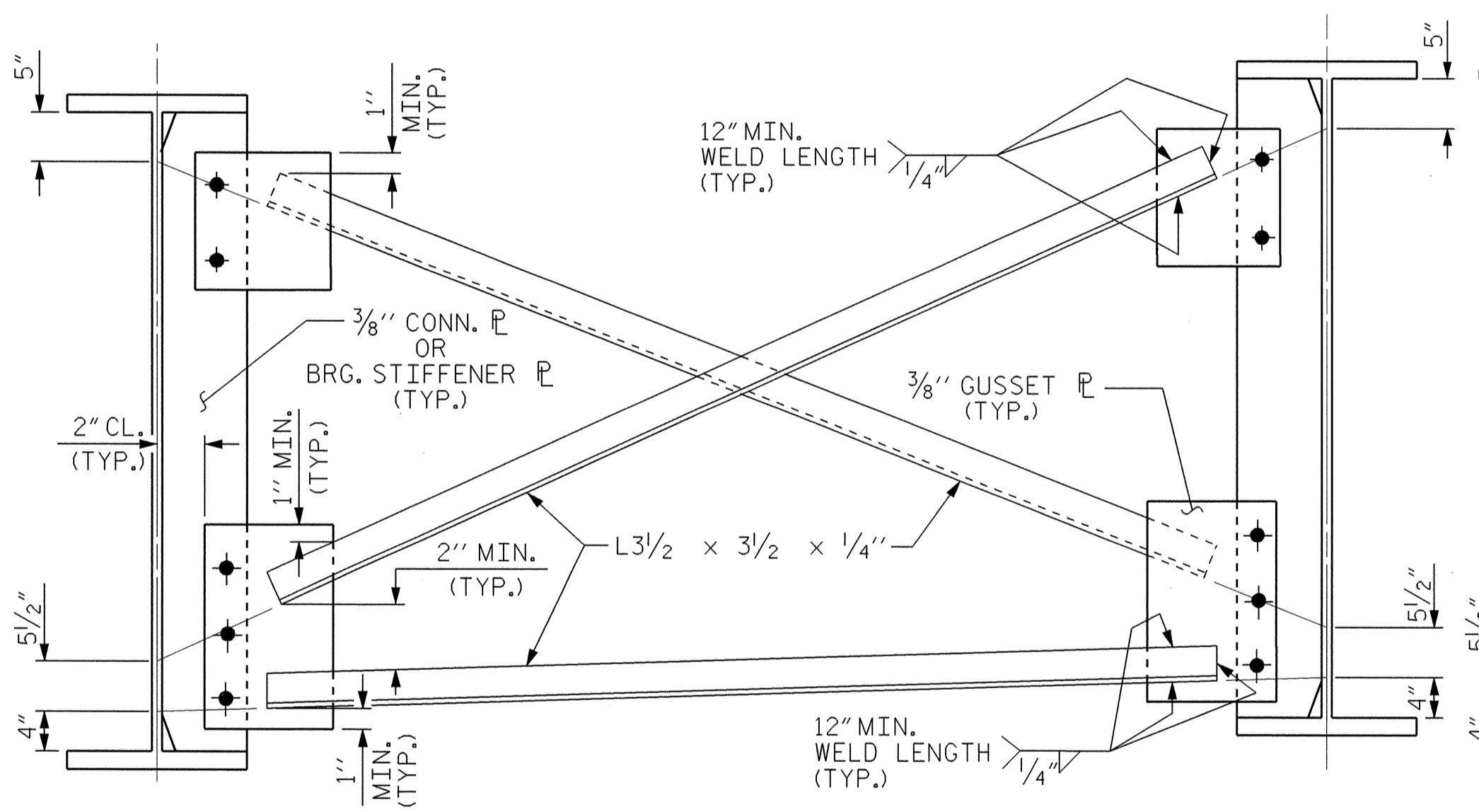
BENT CROSSFRAME (CF2)



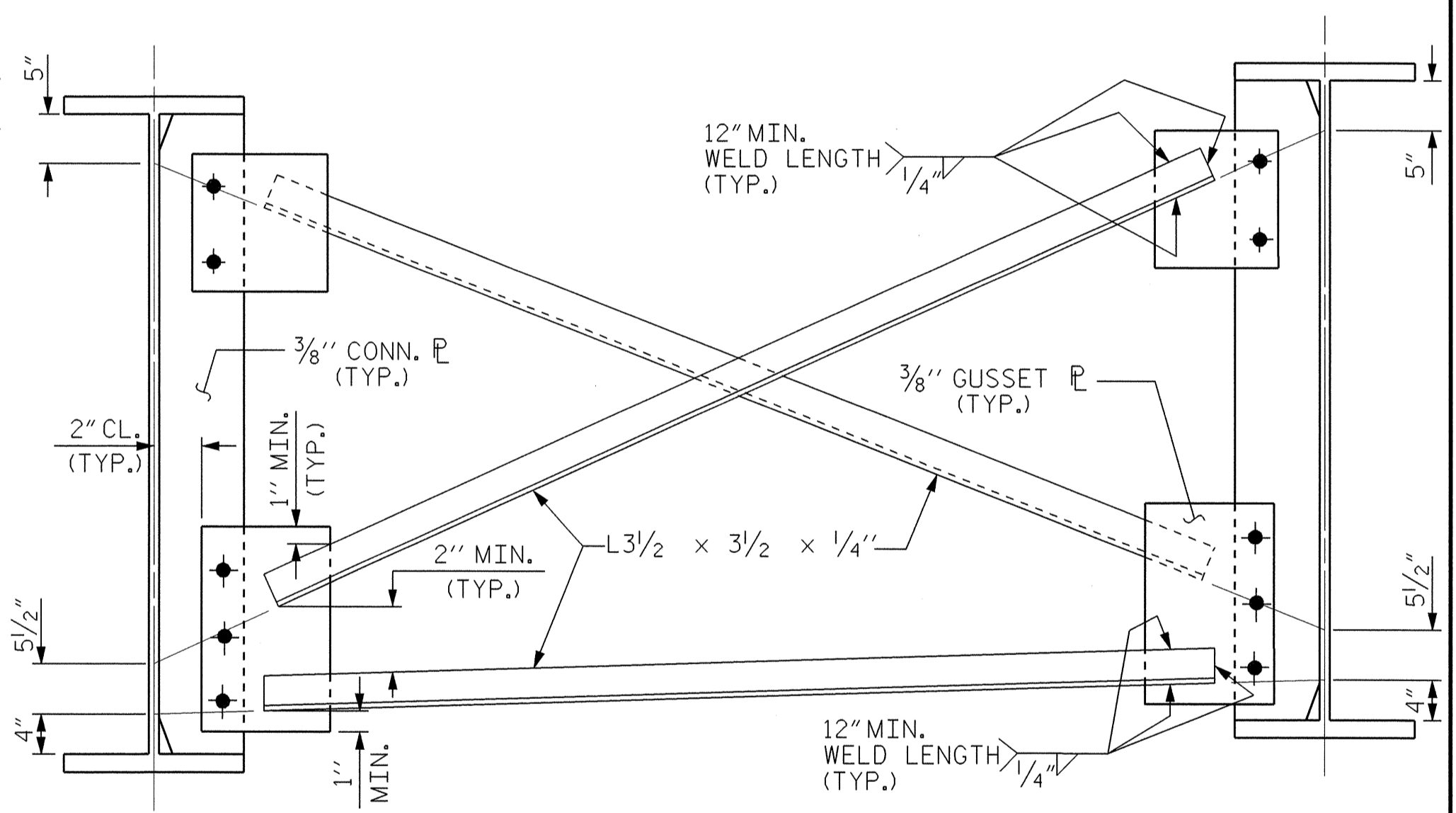
INTERMEDIATE CROSSFRAME (CF3)



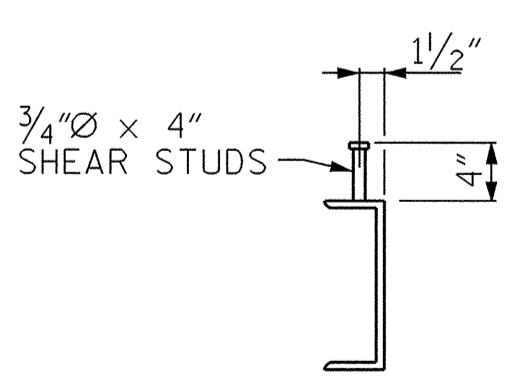
WELD TERMINATION DETAILS



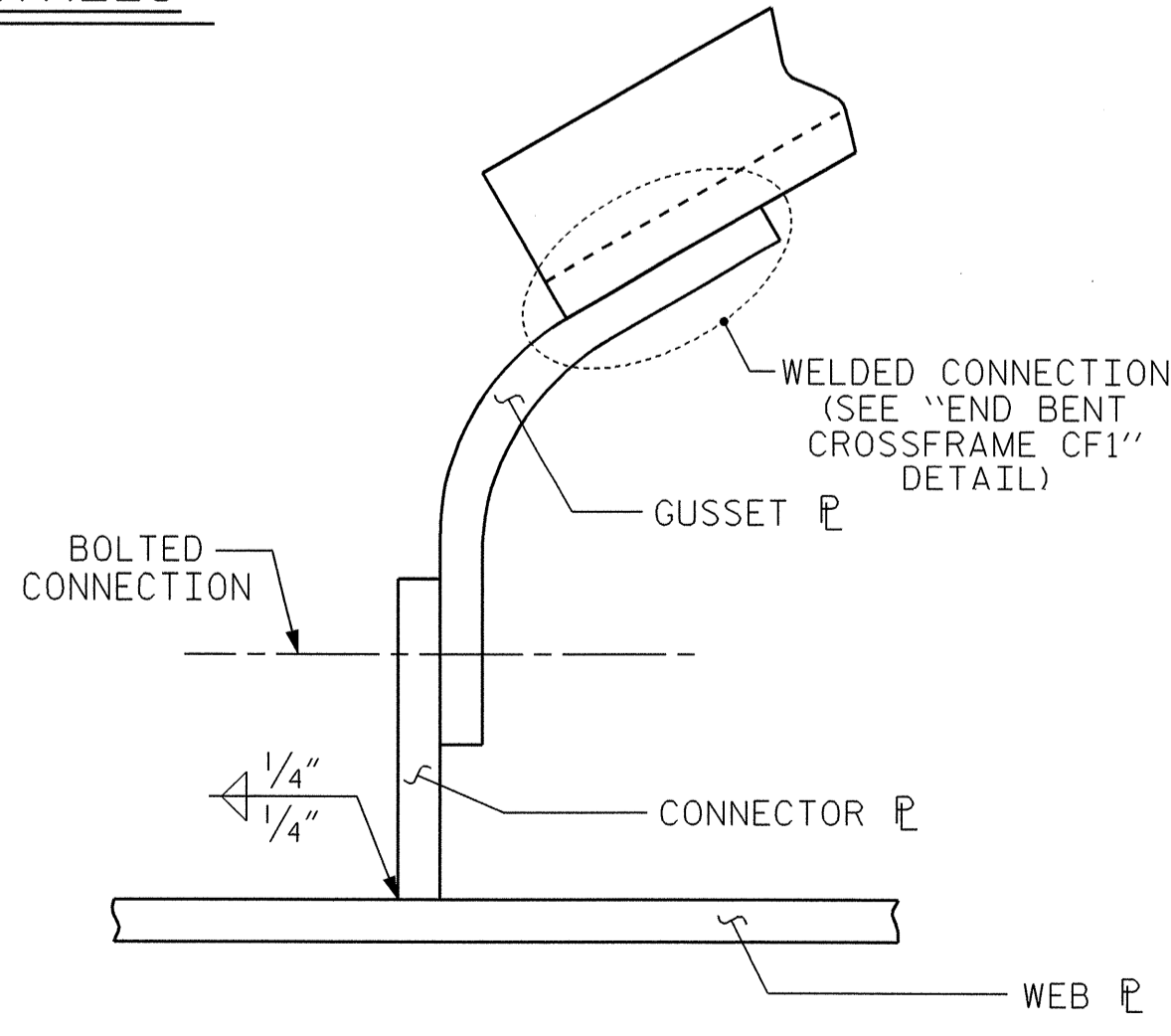
OPTIONAL BENT CROSSFRAME



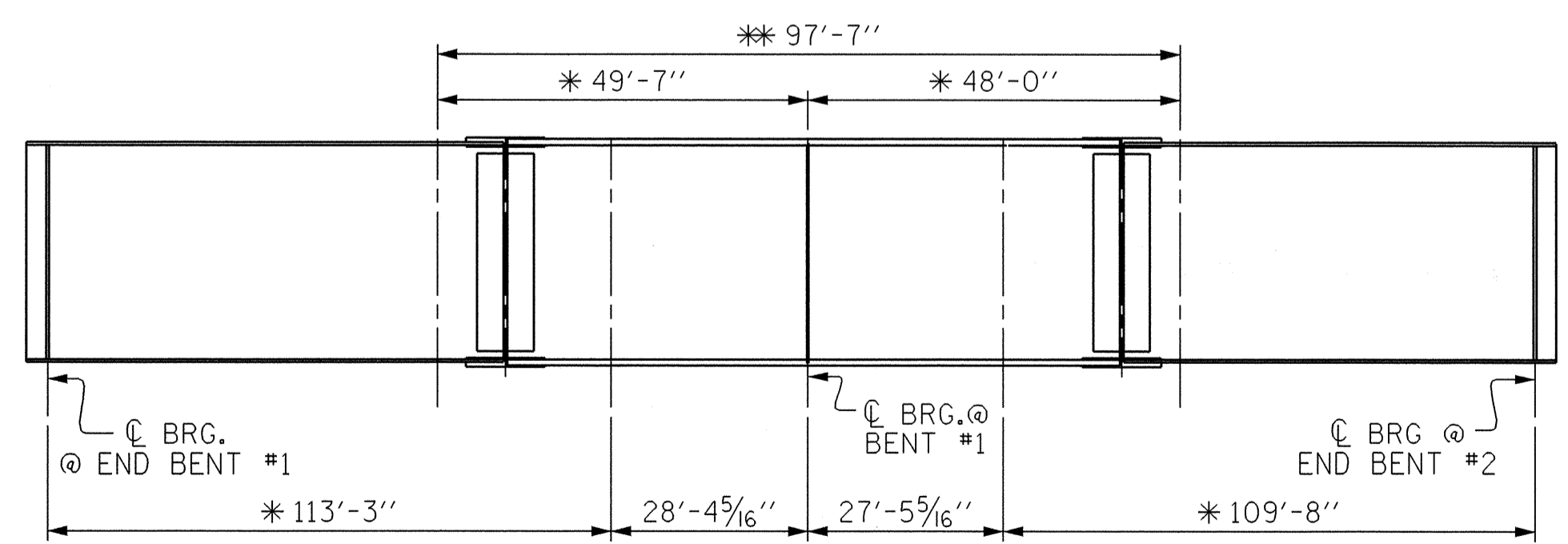
OPTIONAL INTERMEDIATE CROSSFRAME



END BENT CROSSFRAME SHEAR STUD DETAILS



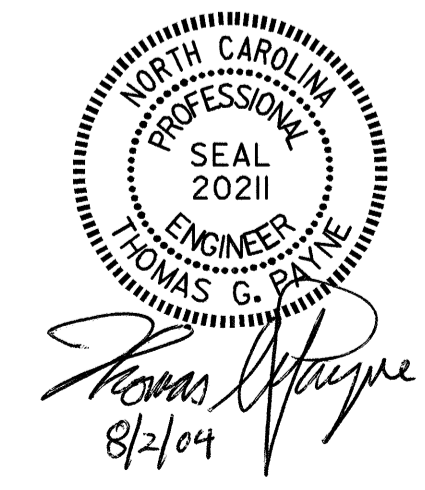
WELD DETAIL FOR CURVED GUSSET



CHАРY V-NOTCH TEST FOR GIRDERS

*CHАРY V-NOTCH TESTS WILL BE REQUIRED FOR ALL TOP OR BOTTOM FLANGE PLATES WHICH FALLS WITHIN THESE LIMITS, INCLUDING ALL WEB PLATES, AND ALL SPLICE PLATES. IF A PERMITTED SHOP FLANGE SPLICE IS NOT USED, CHАРY V-NOTCH TESTS WILL BE REQUIRED FOR THE ENTIRE TOP FLANGE PLATE, FOR CHАРY V-NOTCH TESTS, SEE ARTICLE 1072-9 OF THE STANDARD SPECIFICATIONS.

**NO WELDING OF FORMS OR FALSEWORK TO THE TOP FLANGE WILL BE PERMITTED IN THIS REGION.



PROJECT NO. I-2102
FORSYTH COUNTY
STATION: 20+71.54 -L-

SHEET 3 OF 4

STATE OF NORTH CAROLINA
DEPARTMENT OF TRANSPORTATION
RALEIGH

SUPERSTRUCTURE
STRUCTURAL STEEL
DETAILS

REVISIONS						SHEET NO.
NO.	BY:	DATE:	NO.	BY:	DATE:	TOTAL SHEETS
1			3			51
2			4			