

**PLAN OF RAIL POST SPACINGS**

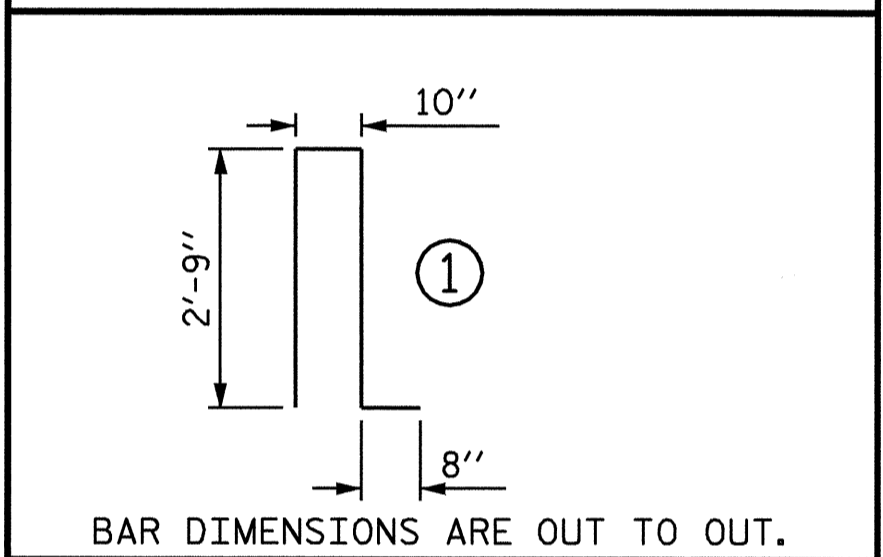
\*\* SEE "PARAPET AND END POST FOR TWO BAR RAIL" FOR ADDITIONAL REINFORCING.

BILL OF MATERIAL					
PARAPET AND TWO END POSTS					
BAR	NO.	SIZE	TYPE	LENGTH	WEIGHT
* B21	40	#5	STR	59'-2"	2468
* E11	4	#7	STR	2'-6"	20
* E12	4	#7	STR	3'-0"	25
* E13	4	#7	STR	3'-6"	29
* E14	4	#7	STR	4'-0"	33
* E15	4	#7	STR	4'-4"	35
* F11	4	#6	STR	2'-2"	13
* F12	2	#6	STR	3'-5"	10
* F13	2	#6	STR	3'-7"	11
* F14	2	#6	STR	3'-8"	11
* F15	2	#6	STR	4'-5"	13
* S11	273	#5	1	7'-0"	1993
* S12	16	#5	STR	3'-0"	50

\* EPOXY COATED REINF. STEEL = 4711 LBS.

CLASS "AA" CONCRETE	31.16 C.Y.
CONCRETE PARAPET	281.91 L.F.

\* THESE BARS ARE EPOXY COATED



**NOTES**

ALL REINFORCING STEEL IN PARAPET SHALL BE EPOXY COATED.

FOR DETAIL OF CONCRETE INSERT AND GUARDRAIL ANCHOR ASSEMBLY, SEE "RAIL POST SPACING AND END OF RAIL DETAILS" SHEET.

THE #5S12 BARS SHALL BE INSTALLED USING AN ADHESIVE ANCHORING SYSTEM AFTER SAWING THE JOINT. FOR ADHESIVELY ANCHORED BOLTS OR DOWELS, SEE SPECIAL PROVISIONS. THE YIELD LOAD OF THE #5S12 BARS IS 18.6 KIPS. FIELD TESTING OF THE ADHESIVE BONDING IS NOT REQUIRED.

VERTICAL GROOVED CONTRACTION JOINTS, 1/2" IN DEPTH, SHALL BE TOOLED IN ALL EXPOSED FACES OF THE PARAPET AND IN ACCORDANCE WITH ARTICLE 825-10(B) OF THE STANDARD SPECIFICATIONS. A JOINT SHALL BE LOCATED AT THE BENT CONTROL LINE AND THEN ABOUT EVERY 10'-0" ± ALONG SPANS. CONTRACTOR SHALL AVOID PLACING JOINTS AT LOCATION OF RAIL POST.

PROJECT NO. I-2102  
FORSYTH COUNTY  
 STATION: 20+71.54 -L-

SHEET 5 OF 5

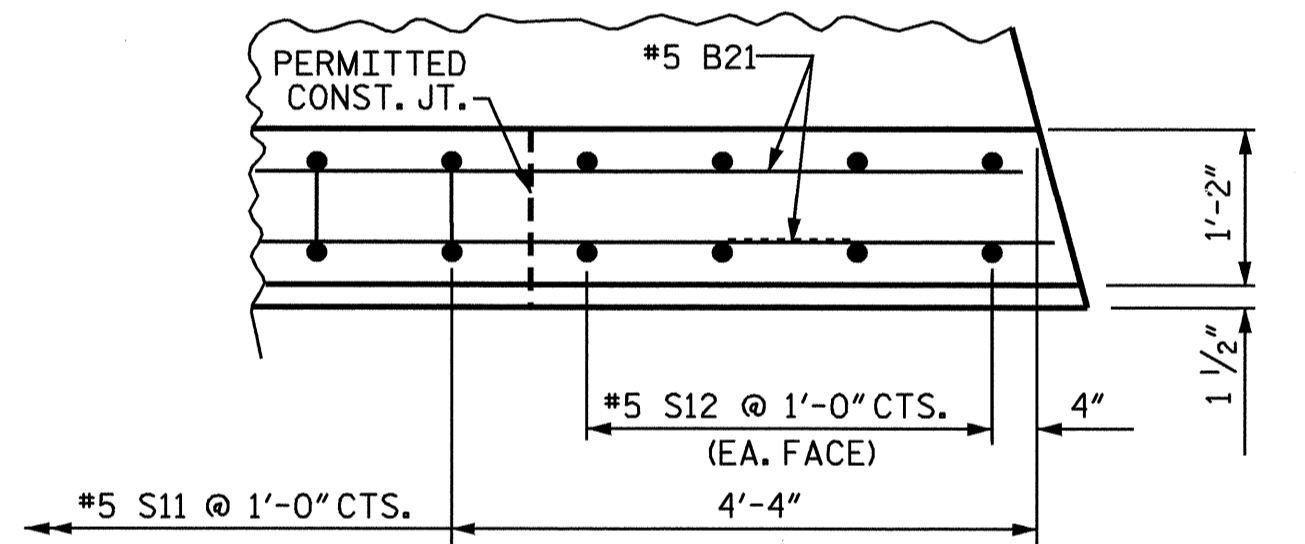
STATE OF NORTH CAROLINA  
 DEPARTMENT OF TRANSPORTATION  
 RALEIGH

CONCRETE PARAPET  
 AND  
 RAIL END POST DETAILS  
 FOR TWO BAR METAL RAILS

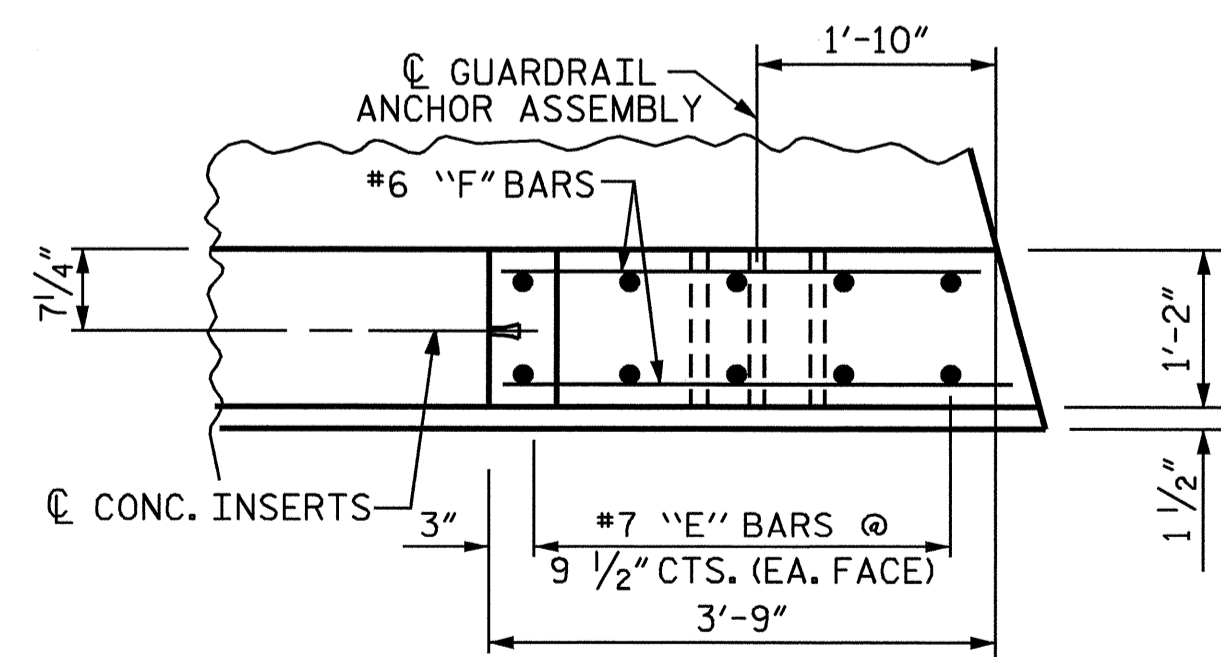


REVISIONS					SHEET NO.
NO.	BY:	DATE:	NO.	BY:	DATE:
1			3		
2			4		

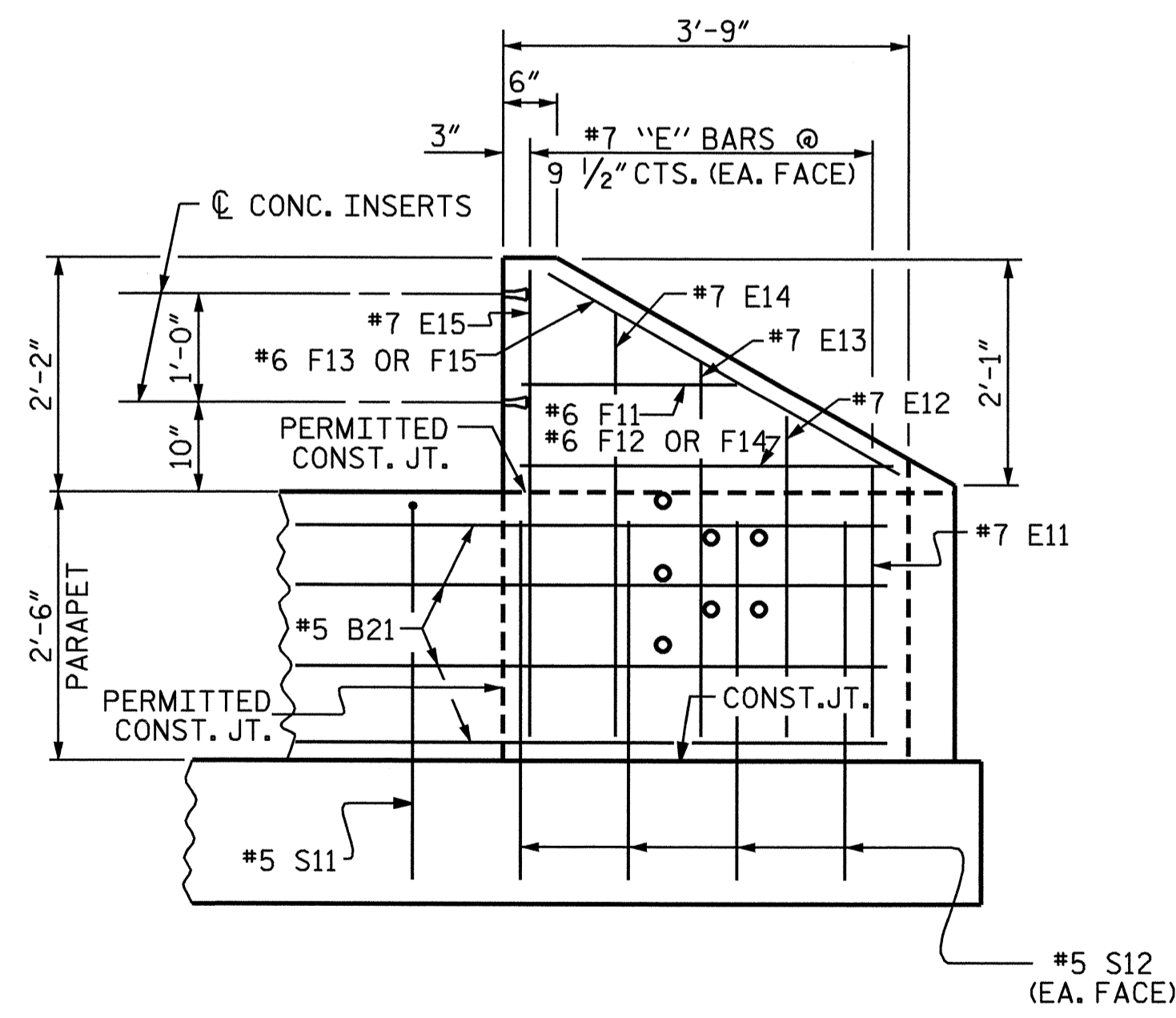
TOTAL SHEETS: 51



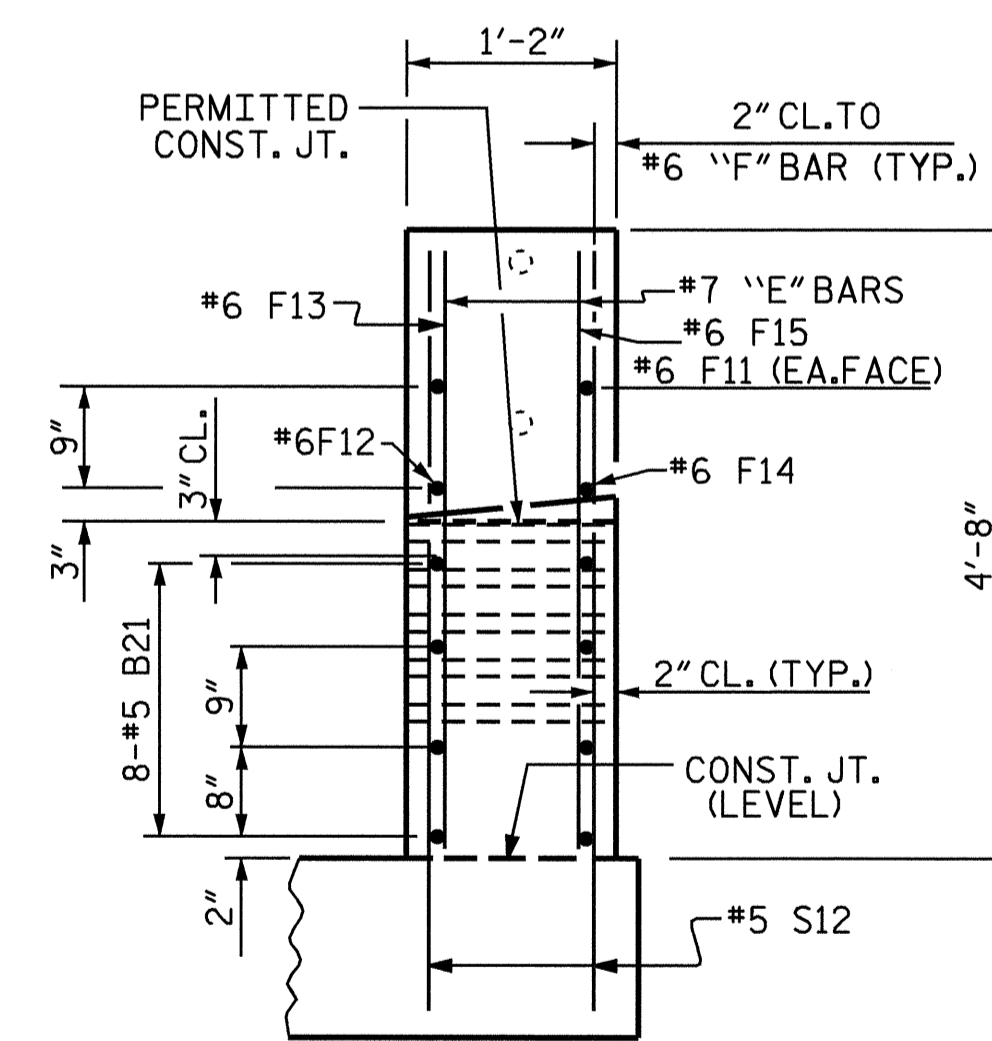
PLAN OF PARAPET



PLAN OF END POST



ELEVATION



END VIEW

**PARAPET AND END POST FOR TWO BAR RAIL**

DRAWN BY: J.P. ADAMS DATE: 8/4/03  
 CHECKED BY: S.H. SOCKWELL DATE: 10/2/03

04-AUG-2004 10:14  
 W:\squad\I2102\final\I2102\_sd\_2MR\_01.dgn  
 tpcyrs