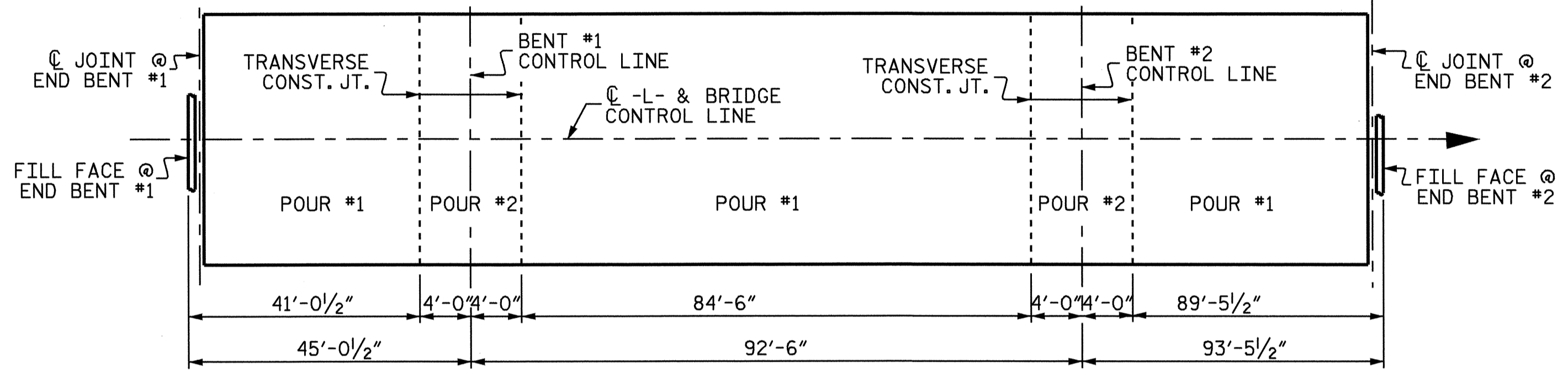
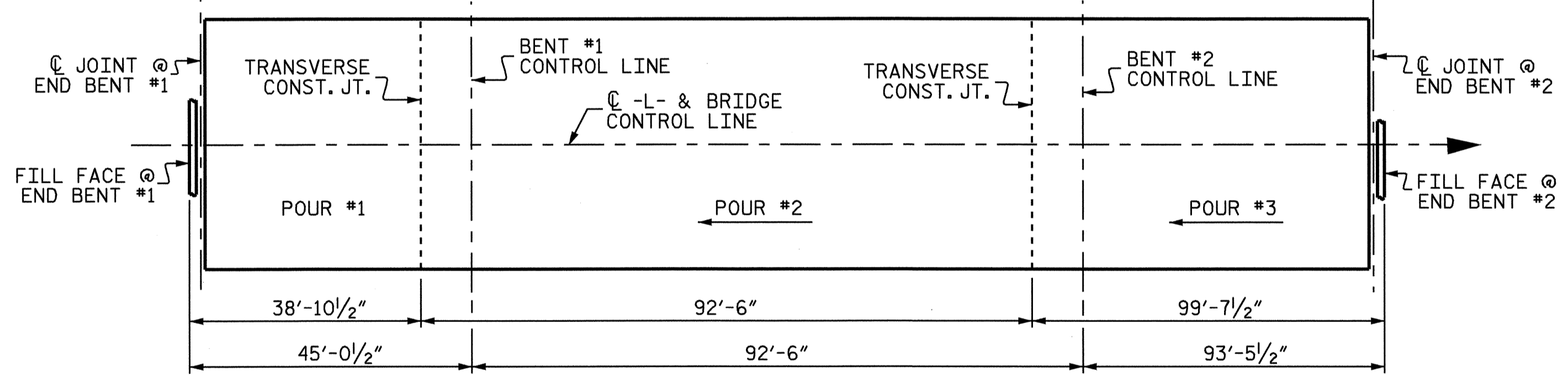


LAYOUT FOR COMPUTING AREA
REINFORCED CONCRETE DECK SLAB
(SQ. FT. = 7608)



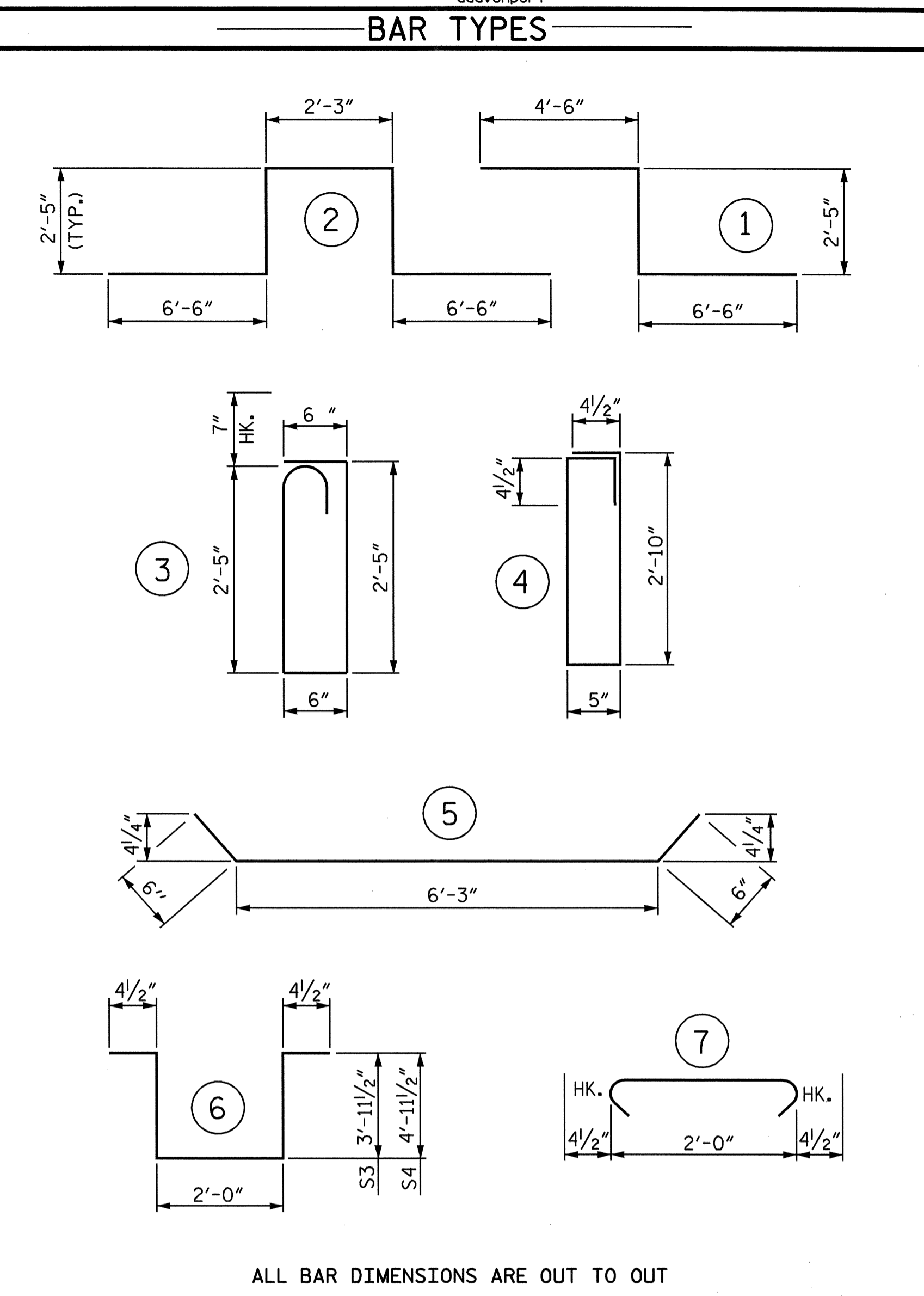
OPTIONAL POURING SEQUENCE

* POUR #2 CAN NOT BE STARTED UNTIL BOTH ADJACENT
#1 POURS REACH A MINIMUM OF 3000 PSI



POURING SEQUENCE

REINFORCING BAR SCHEDULE						
SPANS A THRU C						
BAR	NO.	SIZE	TYPE	LENGTH	WEIGHT	
*A1	422	#5	STR	32'-10"	14451	
A2	422	#5	STR	32'-10"	14451	
*B1	48	#4	STR	16'-2"	518	
*B2	45	#7	STR	51'-9"	4760	
*B3	42	#7	STR	20'-9"	1781	
*B4	48	#4	STR	19'-6"	625	
*B5	72	#4	STR	22'-10"	1098	
B6	152	#5	STR	58'-9"	9314	
*B7	90	#7	STR	35'-8"	6561	
*B8	42	#7	STR	28'-0"	2404	
*G1	2	#5	STR	32'-9"	68	
*K1	8	#8	1	13'-5"	287	
*K2	8	#8	2	20'-1"	429	
*K3	18	#5	STR	6'-11"	130	
K4	18	#5	5	7'-3"	136	
K5	10	#4	STR	26'-4"	176	
K6	12	#4	STR	6'-8"	53	
K7	24	#4	STR	7'-8"	123	
K8	12	#4	STR	7'-2"	57	
K9	12	#4	STR	4'-9"	38	
*S1	42	#5	3	6'-5"	281	
S2	63	#4	4	7'-3"	305	
S3	12	#4	6	10'-8"	86	
S4	30	#4	6	12'-8"	254	
S5	156	#4	7	2'-9"	287	
REINFORCING STEEL				=	25280 LBS	
*EPOXY COATED REINF. STEEL				=	33393 LBS	



ALL BAR DIMENSIONS ARE OUT TO OUT

SUPERSTRUCTURE REINFORCING STEEL LENGTHS ARE BASED ON THE FOLLOWING MINIMUM SPLICE LENGTHS

BAR SIZE	SUPERSTRUCTURE EXCEPT APPROACH SLABS, PARAPET, AND BARRIER RAIL		APPROACH SLABS		PARAPET AND BARRIER RAIL
	EPOXY COATED	UNCOATED	EPOXY COATED	UNCOATED	
#4	2'-0"	1'-9"	2'-0"	1'-9"	2'-9"
#5	2'-6"	2'-2"	2'-6"	2'-2"	3'-5"
#6	3'-0"	2'-7"	3'-10"	2'-7"	4'-4"
#7	5'-3"	3'-6"			
#8	6'-10"	4'-7"			

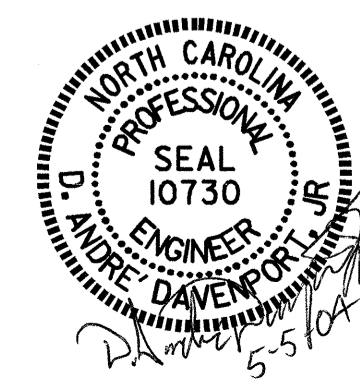
GROOVING BRIDGE FLOORS
BRIDGE DECK 6169 SQ.FT.

—SUPERSTRUCTURE BILL OF MATERIAL—			
	CLASS AA CONCRETE (CU. YDS.)	REINFORCING STEEL (LBS.)	EPOXY COATED REINFORCING STEEL (LBS.)
POUR #1	47.1		
POUR #2	124.9		
POUR #3	110.8		
TOTALS**	282.8	25280	33393

**QUANTITIES FOR BARRIER RAIL ARE NOT INCLUDED

PROJECT NO. B-4334
DAVIDSON COUNTY
STATION: 27+49.00 -L-

STATE OF NORTH CAROLINA DEPARTMENT OF TRANSPORTATION RALEIGH SUPERSTRUCTURE					
BILL OF MATERIAL					
REVISIONS					SHEET NO.
NO.	BY:	DATE:	NO.	BY:	DATE:
1			3		
2			4		
					TOTAL SHEETS 34



ASSEMBLED BY : M. M. P./ DAD DATE : 10/9/02
CHECKED BY : H. T. BARBOUR DATE : 11/02
DRAWN BY : JMB 5/87 REV. 6/1/94 EEM/GRP
CHECKED BY : SJD 9/87 REV. 8/16/99 RWW/LES