

PHASE I

STEP 1: INSTALL ALL OFFSITE DETOUR SIGNING FOR BRIDGE NO. 46 ON SR 1223 (SEE TCP-2). IF WORK IS NOT PURSUED WITHIN THREE DAYS OF SIGN INSTALLATION, THE SIGNS SHALL BE COVERED OR REMOVED IN A METHOD APPROVED BY THE ENGINEER ACCORDING TO STANDARD SPECIFICATION SECTION 1110.

STEP 2: USING SIGNS AS SHOWN IN INSET 'A', CLOSE SR 1223 FROM -L- STA. 13+45 +/- TO -L- STA. 26+95 +/-.

PLACE TYPE III BARRICADES APPROXIMATELY TWENTY (20) FEET TO THE EAST OF -DRIVE- STA. 10+11 +/- TO KEEP TRAFFIC FROM USING EXISTING BRIDGE. ALLOW TRAFFIC FROM -DRIVE- TO ACCESS EXISTING ROAD TO THE WEST OF -DRIVE- WHILE -DRIVE- IS CONSTRUCTED AND MAINTAINED WITH INCIDENTAL STONE.

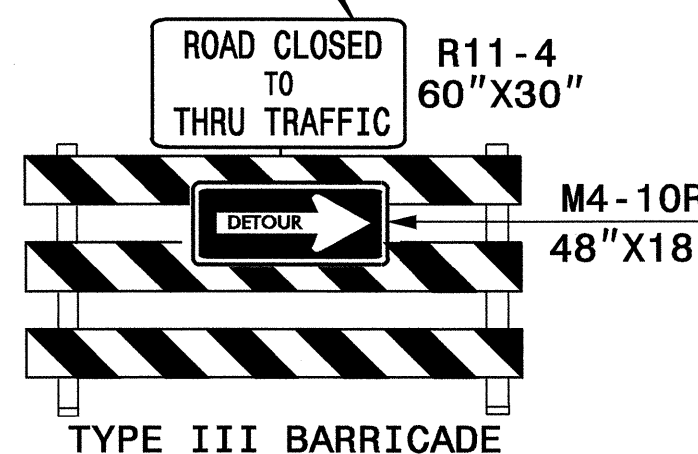
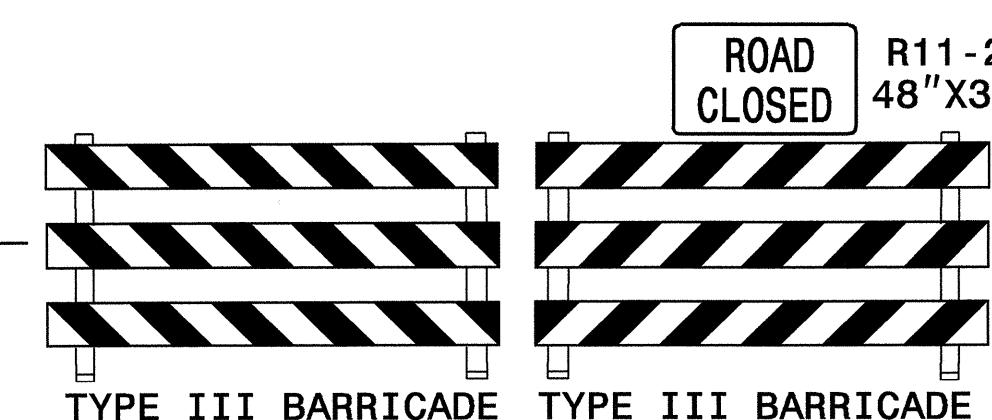
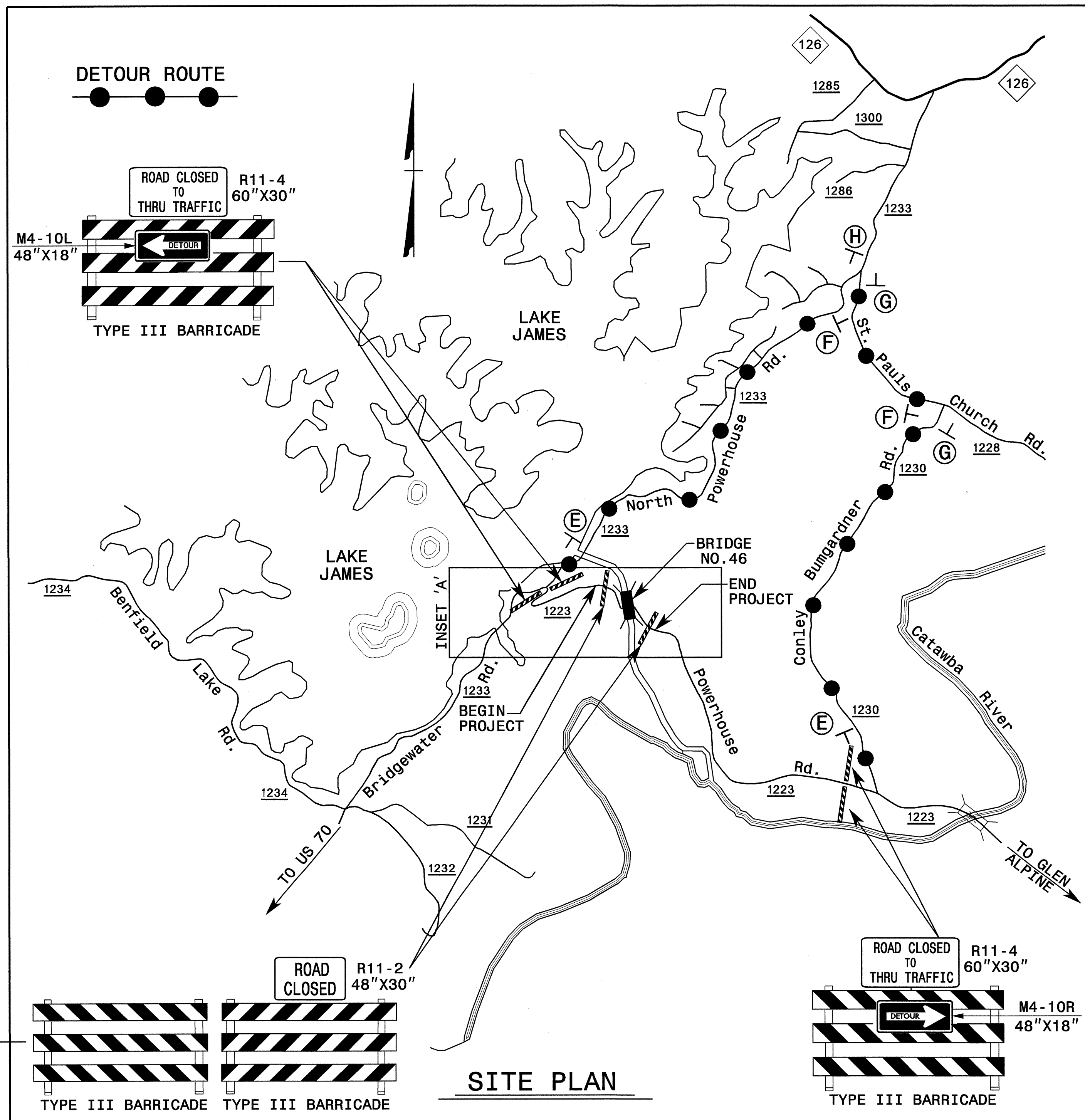
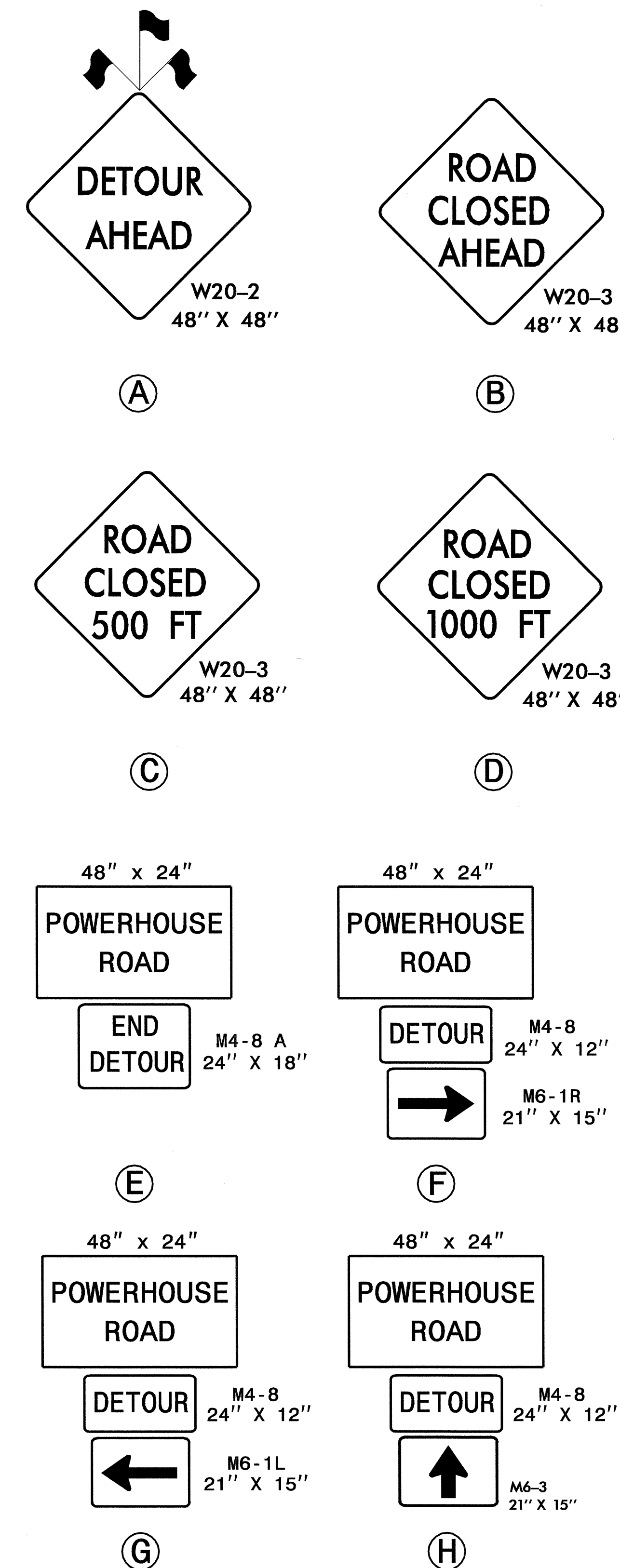
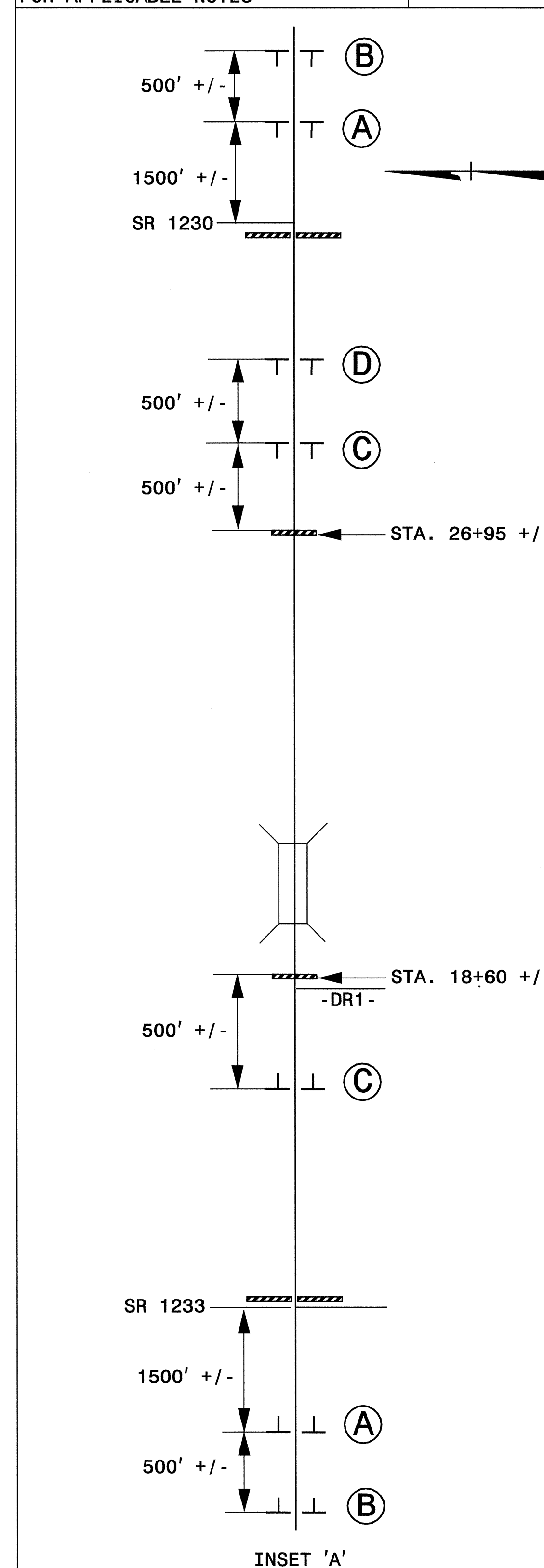
PHASE II

STEP 1: REMOVE THE EXISTING BRIDGE, AND CONSTRUCT NEW BRIDGE, ROADWAY APPROACHES AND DRIVE.

STEP 2: PLACE FINAL LAYER OF SURFACE COURSE AND FINAL PAVEMENT MARKINGS. REFER TO ROADWAY STANDARD DRAWINGS NO. 1205.01, 1205.02 AND 1205.12.

STEP 3: REMOVE ALL TYPE III BARRICADES AND ALL DETOUR SIGNING AND REOPEN SR 1223 TO TWO-LANE, TWO-WAY TRAFFIC.

REFER TO RSD 1101.03 SHEET 1 OF 9 FOR APPLICABLE NOTES



APPROVED: *Jessica Kuse* DATE: 5/1/04
 SEAL
 NORTH CAROLINA PROFESSIONAL ENGINEER SEAL 027811
 JESSICA D. KUSE

PHASING AND OFFSITE DETOUR SIGNING		REVISIONS	
SCALE: NONE	DATE: 3/2004		
DWG. BY: MLM	DESIGN BY: MLM		
REVIEWED BY: JDK			