

BRIDGE HYDRAULIC DATA

DESIGN DISCHARGE	= 2500 CFS
DESIGN FREQUENCY	= N/A YRS
DESIGN HW ELEVATION	= 1063.5FT
BASE DISCHARGE	= N/A CFS
BASE FREQUENCY	= N/A YRS
BASE HW ELEVATION	= N/A FT
OVERTOPPING DISCHARGE	= 11080 CFS
OVERTOPPING FREQUENCY	= N/A YRS
OVERTOPPING ELEVATION	= 1076.2FT

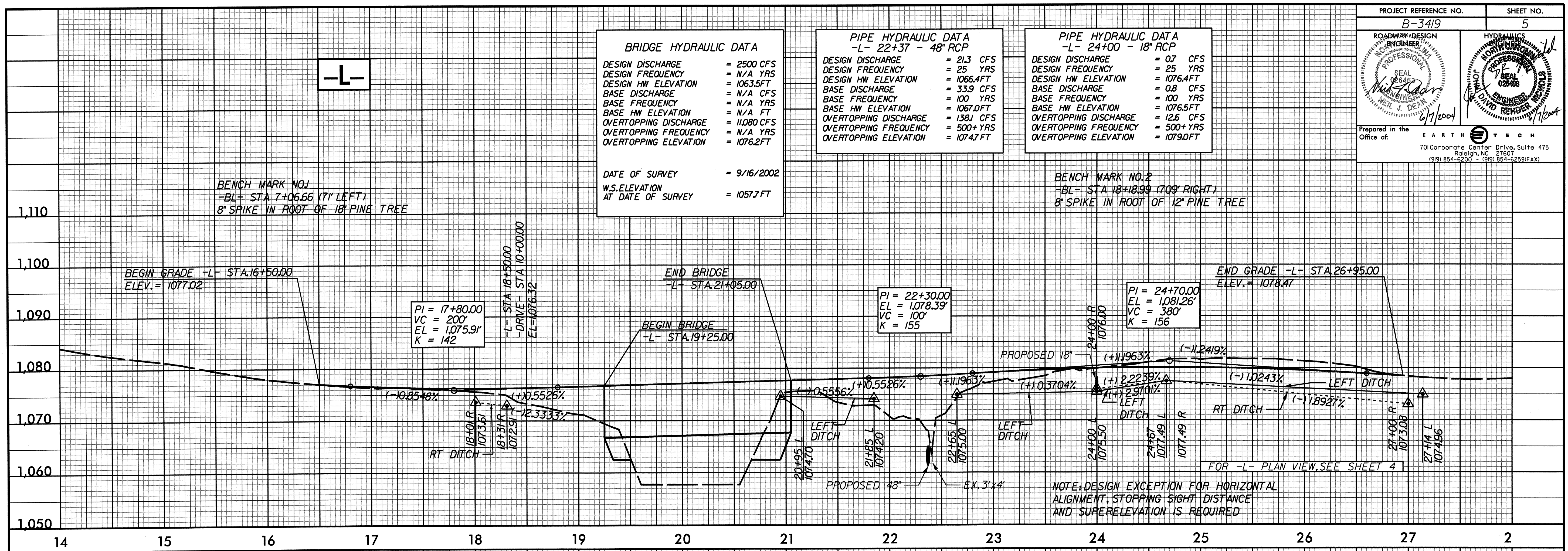
DATE OF SURVEY = 9/16/2002
 W.S.ELEVATION AT DATE OF SURVEY = 1057.7FT

**PIPE HYDRAULIC DATA
 -L- 22+37 - 48" RCP**

DESIGN DISCHARGE	= 213 CFS
DESIGN FREQUENCY	= 25 YRS
DESIGN HW ELEVATION	= 1066.4FT
BASE DISCHARGE	= 339 CFS
BASE FREQUENCY	= 100 YRS
BASE HW ELEVATION	= 1067.0FT
OVERTOPPING DISCHARGE	= 138J CFS
OVERTOPPING FREQUENCY	= 500+ YRS
OVERTOPPING ELEVATION	= 1074.7 FT

**PIPE HYDRAULIC DATA
 -L- 24+00 - 18" RCP**

DESIGN DISCHARGE	= 07 CFS
DESIGN FREQUENCY	= 25 YRS
DESIGN HW ELEVATION	= 1076.4FT
BASE DISCHARGE	= 08 CFS
BASE FREQUENCY	= 100 YRS
BASE HW ELEVATION	= 1076.5FT
OVERTOPPING DISCHARGE	= 12.6 CFS
OVERTOPPING FREQUENCY	= 500+ YRS
OVERTOPPING ELEVATION	= 1079.0FT



-DRIVE-

**PIPE HYDRAULIC DATA
 -DRIVE- 11+24 - 30" RCP**

DESIGN DISCHARGE	= 17.5 CFS
DESIGN FREQUENCY	= 25 YRS
DESIGN HW ELEVATION	= 1071.8 FT
BASE DISCHARGE	= 27.8 CFS
BASE FREQUENCY	= 100 YRS
BASE HW ELEVATION	= 1072.5FT
OVERTOPPING DISCHARGE	= 35.3 CFS
OVERTOPPING FREQUENCY	= 100+ YRS
OVERTOPPING ELEVATION	= 1073.1 FT

