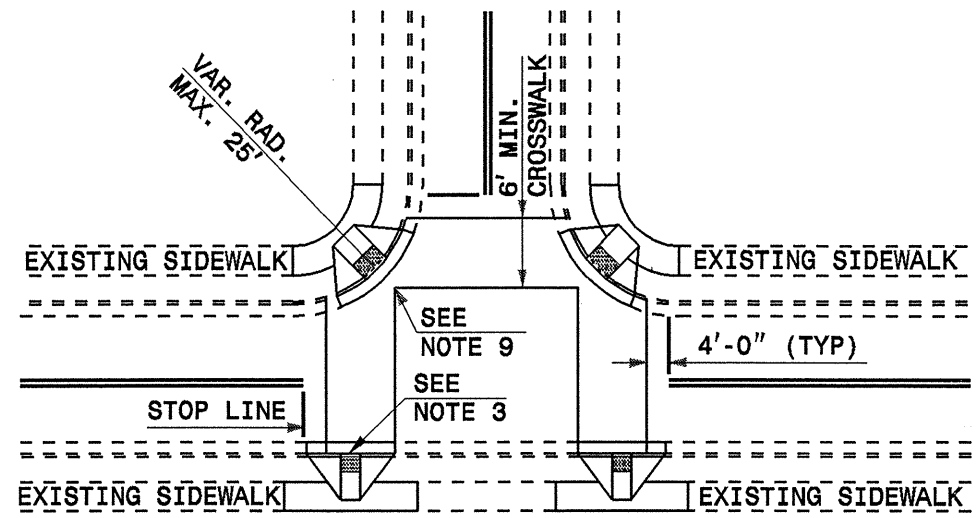


STATE	PROJECT NO.	SHEET NO.	TOTAL SHEETS
N.C.	37425	17	22

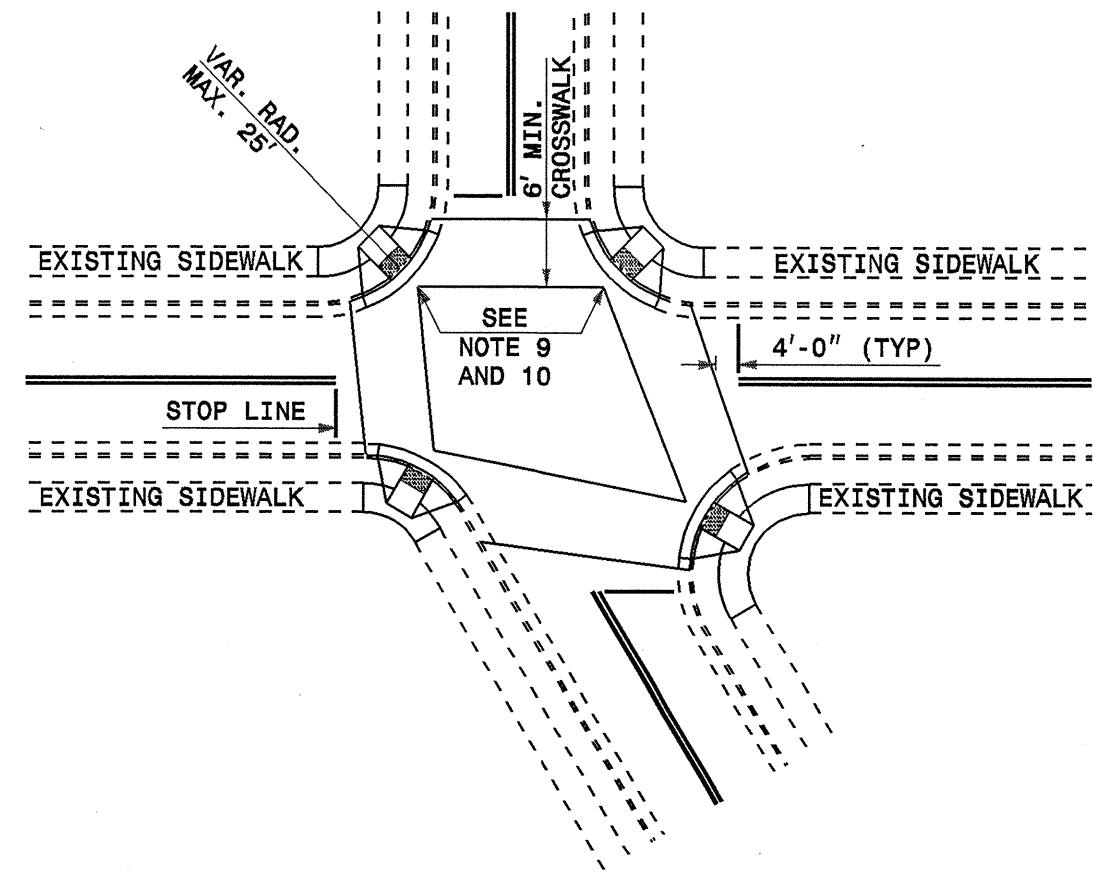
STATE OF
NORTH CAROLINA
DEPT. OF TRANSPORTATION
DIVISION OF HIGHWAYS
RALEIGH, N.C.

ENGLISH DETAIL DRAWING FOR
WHEELCHAIR RAMP
CURB CUT

SHEET 4 OF 5
848D06



DETAIL SHOWING TYPICAL LOCATION OF WHEELCHAIR RAMPS, PEDESTRIAN CROSSWALKS AND STOP LINES FOR TEE INTERSECTIONS



DETAIL SHOWING TYPICAL LOCATION OF WHEELCHAIR RAMPS, PEDESTRIAN CROSSWALKS AND STOP LINES

RESURFACING PROJECTS



ALLOWABLE LOCATIONS
DIAGONAL RAMP RADII...MAX. 25'

STATE OF
NORTH CAROLINA
DEPT. OF TRANSPORTATION
DIVISION OF HIGHWAYS
RALEIGH, N.C.

ENGLISH DETAIL DRAWING FOR
WHEELCHAIR RAMP
CURB CUT

SHEET 4 OF 5
848D06

5/28/99
30-AUG-2004 14:25
Project: D:\111007451\Ahead\37425\WheelChair_2.dgn