

TWO LANE, TWO WAY WORK ZONE (L-LINES)

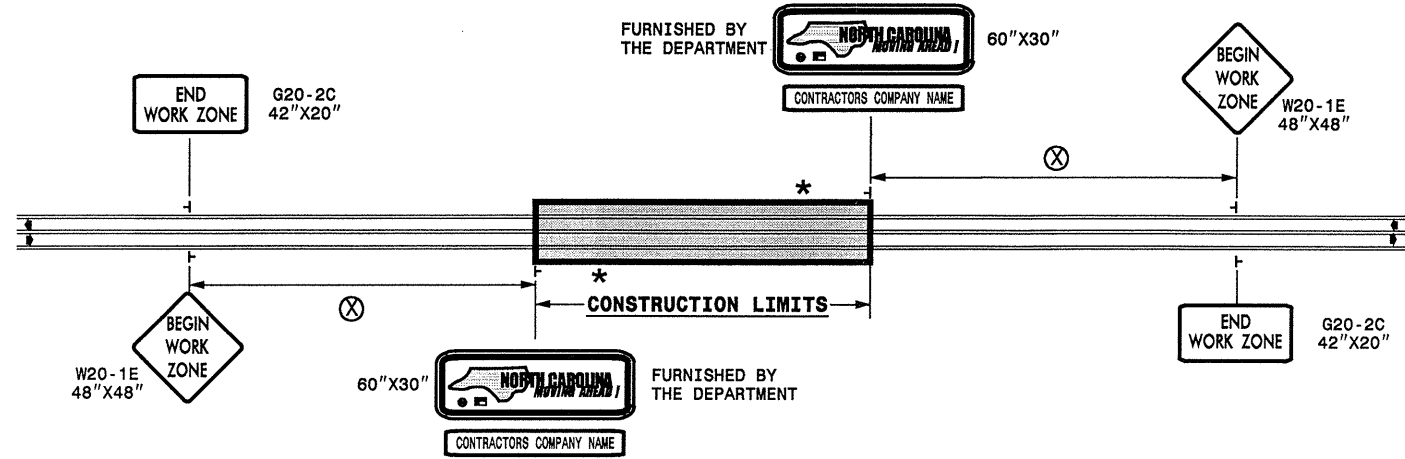
FURNISHED BY THE DEPARTMENT



60"X30"

CONTRACTORS COMPANY NAME

60" Max. X 12"



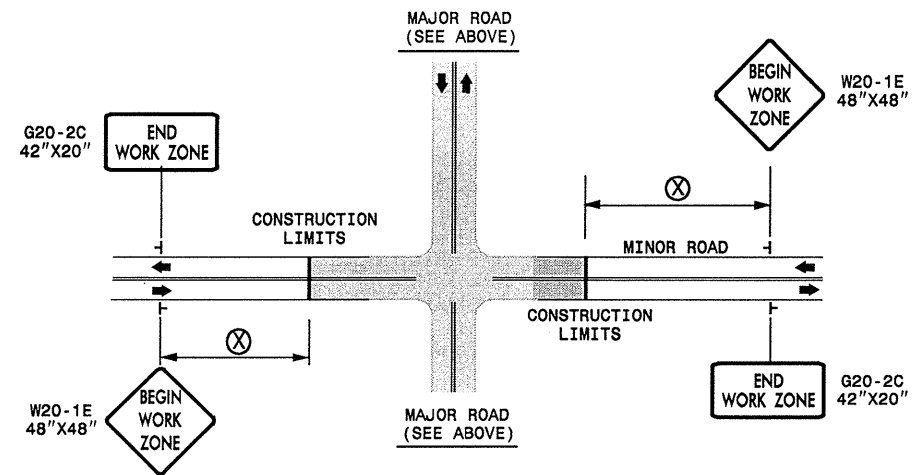
POSTED SPEED LIMIT (M.P.H.)	RECOMMENDED MINIMUM SIGN SPACING
P.S.L. ≤ 50	350'
P.S.L. ≥ 55	500'

* WORK ZONE NEXT XX MILES G20-1 42"X20"
 * THIS SIGN TO BE USED ON PROJECTS LONGER THAN 2 MILES THE NUMBER DISPLAYED ON THE SIGN IS TO BE A WHOLE NUMBER ROUNDED UP TO THE NEXT MILE IT'S TO BE LOCATED 1,500 FEET INSIDE OF THE CONSTRUCTION LIMITS

PROJ. REFERENCE NO. WBS 37425	SHEET NO. NCMA-1
----------------------------------	---------------------

STATE OF NORTH CAROLINA
 DEPT. OF TRANSPORTATION
 DIVISION OF HIGHWAYS
 RALEIGH, N.C.

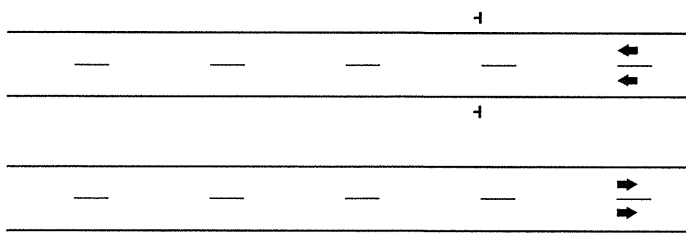
INTERSECTIONS (-Y- LINES)



* ON INTERSECTION TYPE PROJECTS, SELECT THE MAJOR ROAD BASED ON THE HIGHER ADT.

FREEWAYS/INTERSTATES

DUAL MOUNT "BEGIN WORK ZONE" SIGNS 1,000' IN ADVANCE OF PROJECT LIMITS
 DUAL MOUNT "MOVING AHEAD" SIGNS 500' IN ADVANCE OF PROJECT LIMITS



DETAIL DRAWING FOR ADVANCE WARNING WORK ZONE SIGNS

GENERAL NOTES

SEE SPECIAL PROVISIONS FOR "NORTH CAROLINA MOVING AHEAD" REQUIREMENTS.

LEGEND

┆ STATIONARY SIGN

◀ DIRECTION OF TRAFFIC FLOW

SHEET 1 OF 1

APPROVED: _____ DATE: _____

SEAL

ADVANCE WARNING WORK ZONE SIGNS FOR "MOVING AHEAD"

SCALE: NONE	REVISIONS
DATE: 07/03	
DWG. BY: JSK	
DESIGN BY: JSK	
REVIEWED BY: SK	