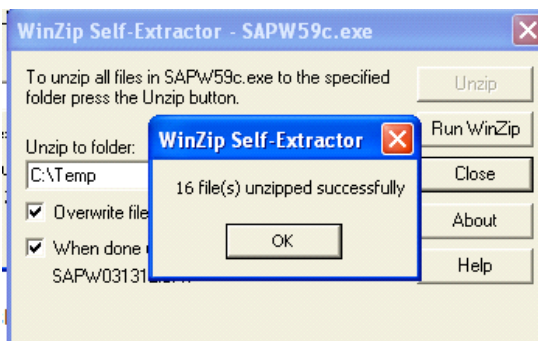
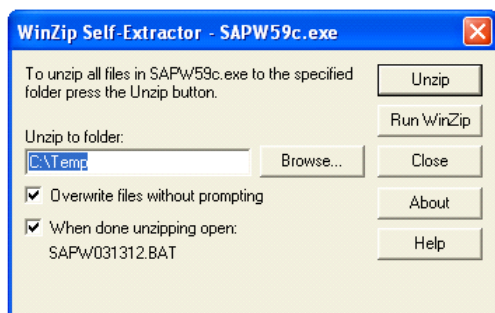


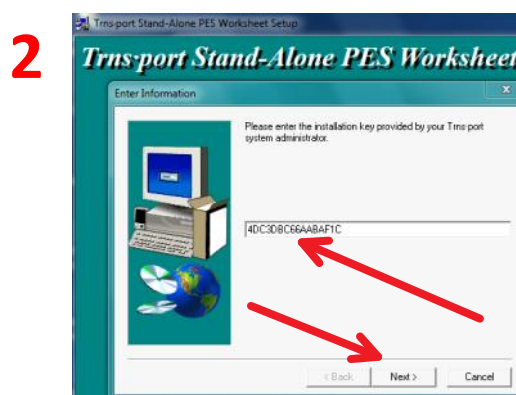
Run SAPW59c.exe first and "Unzip" to same Temp folder



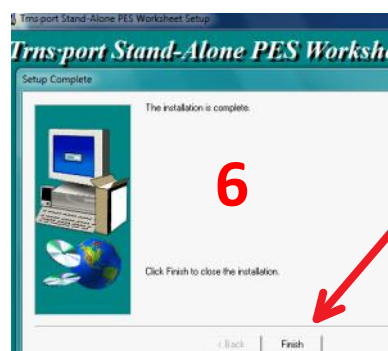
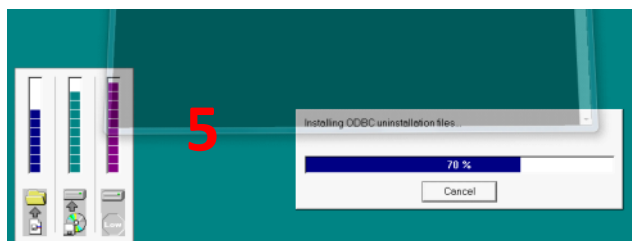
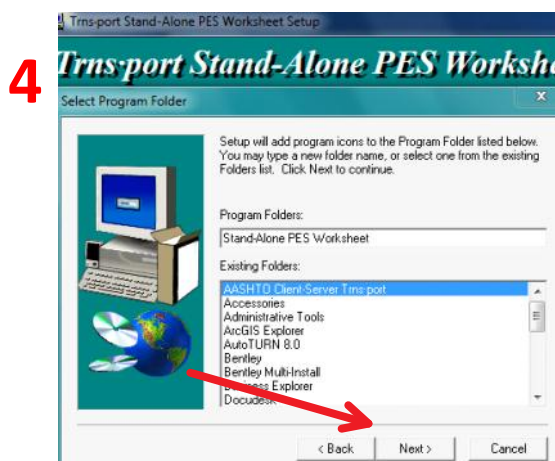
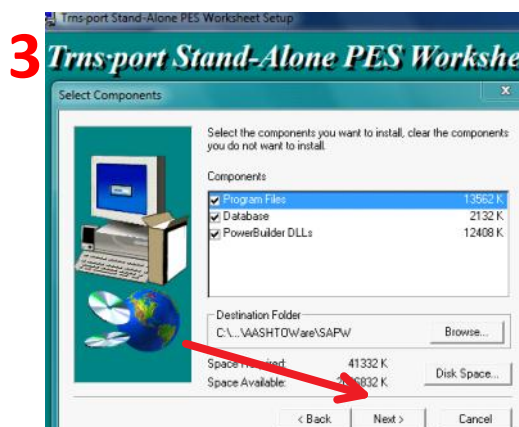
Once you click on "OK", the install will begin automatically with the Welcome screen:



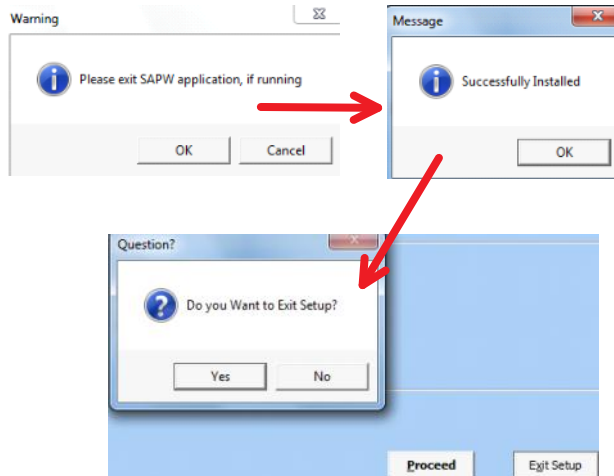
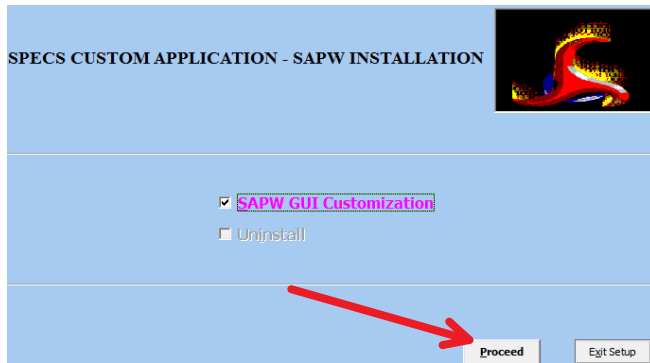
Type or paste the installation code key:
4DC3DBC66AABAF1C



Leave the default settings

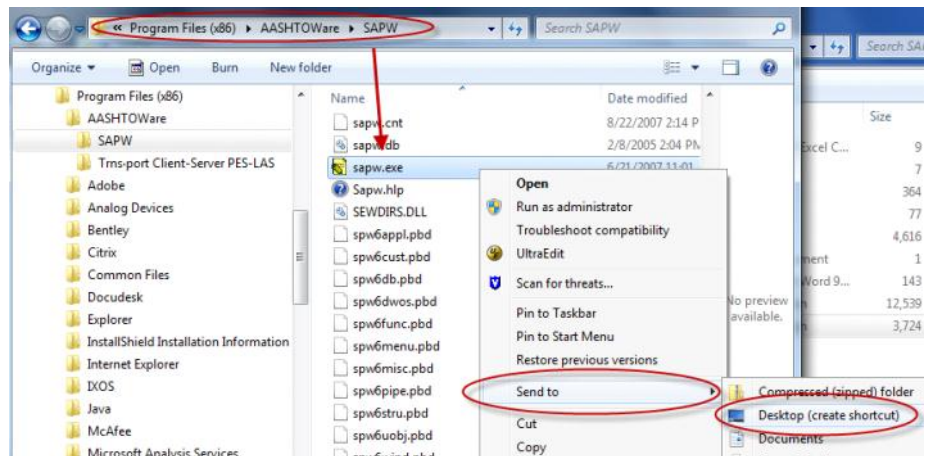


Next run the SAPWCustSetup.exe
This customizes the application interface.



You have now installed SAPW in the following location.

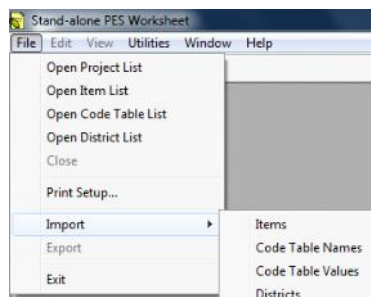
Create a desktop shortcut if preferred.



You might receive this Win7 alert when first running SAPW. Click on "Allow Access".



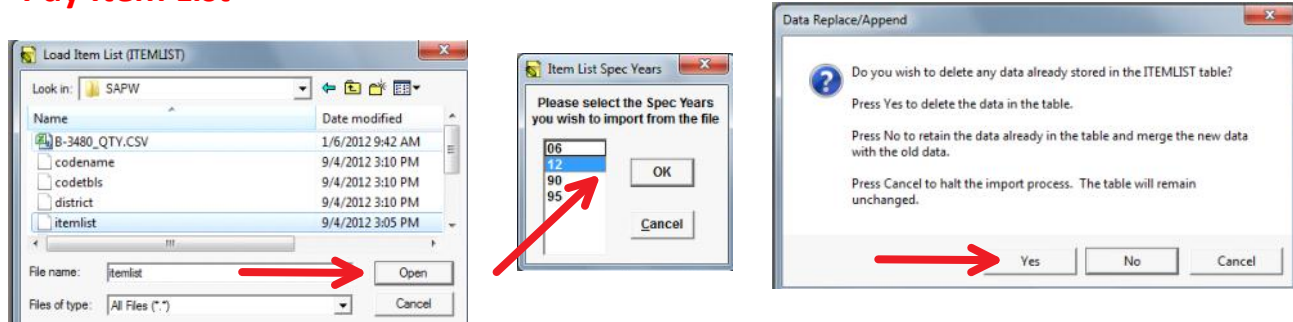
You will need to import the following four tables the first time. Please note that from time to time, our pay item list is updated and will be posted on our website. You would then have to re-import the new list.



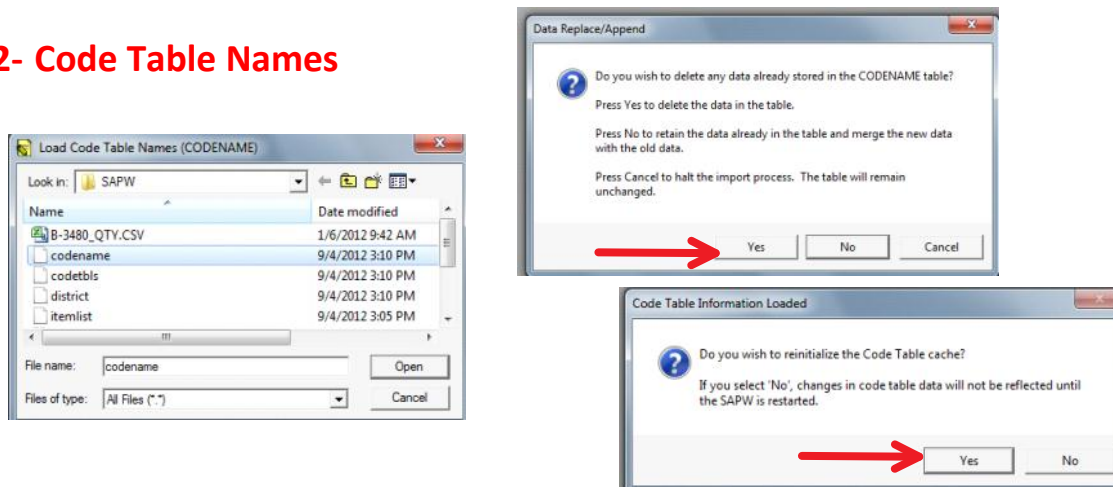
Note:

- I have included the four tables needed for this install.
- Please note that updates posted on the website with have the file extension ".txt" added to them so that your browser will allow you to download the file.
- Please rename the file without any extension as they are in this install
- You do not need to install in any order, this example just starts from the top (Items) to the last one (Districts).

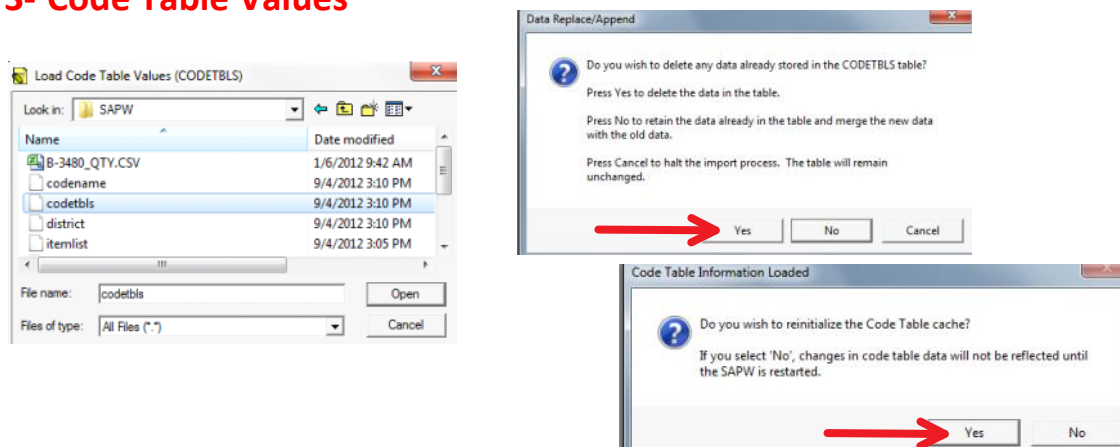
1- Pay Item List



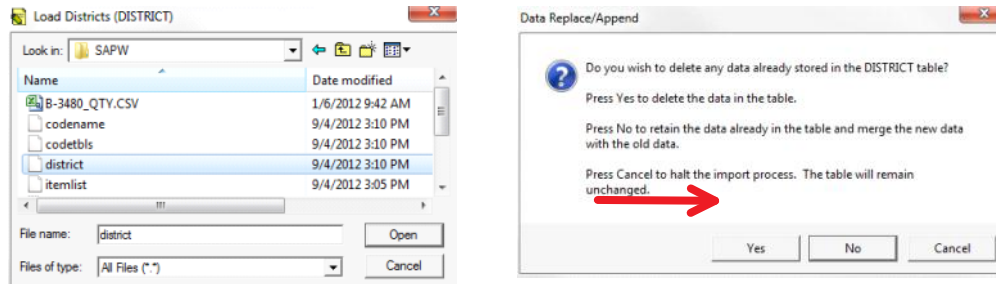
2- Code Table Names



3- Code Table Values



4- Districts



You have set the program up and are ready to start entering quantities for your project.

Please follow the documentation in the How2use folder.

SAPW Guide - Full description of all of application tools and toolbars.

SAPW Checklist - Short version of guide of just what is needed for turning in a Roadway project.