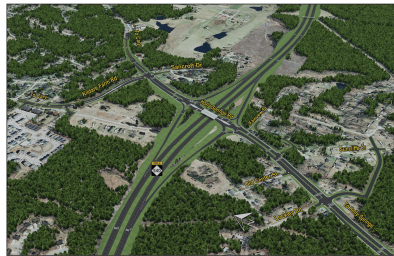


Interchange Configurations

The Complete 540 project would include a total of thirteen interchanges between N.C. 55 Bypass and U.S. 64/U.S. 264. All other major roads would cross 540 with either an underpass or an overpass (not shown here). The visualizations below illustrate the preliminary configurations for each interchange.



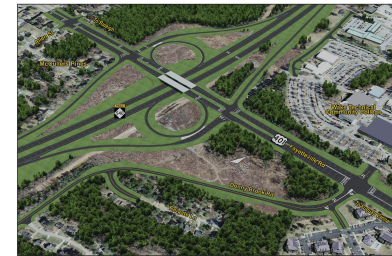
N.C. 55 Bypass



Holly Springs Road



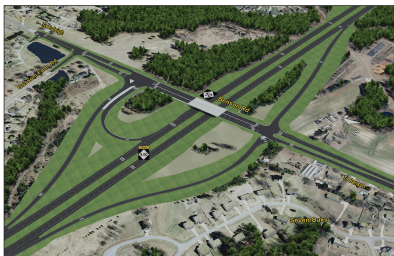
Bells Lake Road



U.S. 401 (Fayetteville Road)



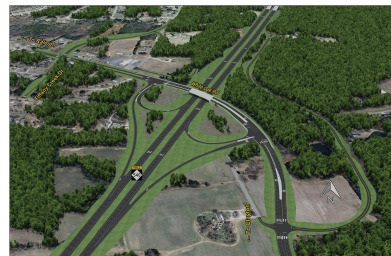
Old Stage Road



N.C. 50 (Benson Road)



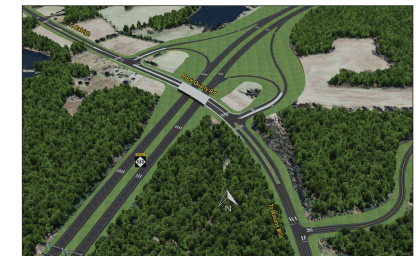
I-40 and the Clayton Bypass (U.S. 70)



White Oak Road



U.S. 70 Business



Rock Quarry Road



Auburn-Knightdale Road



Poole Road



U.S. 64/U.S. 264 (I-495/I-540/I-87)

PLEASE NOTE

1. The visualizations shown here are based on the project's current design plans, which are considered preliminary and subject to change.
2. The scale of the images shown here varies, depending on the size and complexity of each interchange.