



STATE OF NORTH CAROLINA
DEPARTMENT OF TRANSPORTATION

ROY COOPER
GOVERNOR

JAMES H. TROGDON, III
SECRETARY

February 16, 2018

US Army Corps of Engineers
Regulatory Field Office
69 Darlington Ave.
Wilmington, NC 28403

Attention: Liz Hair
NCDOT Coordinator

Subject: Modification request for Section 404 Nationwide Permits 12 and 14 and Section 401 Water Quality Certification for the construction of the US 401 improvements in Fayetteville, Cumberland County TIP No. U-4405. Debit \$570 from WBS 39049.1.1.

Reference: Section 404 USACE Action ID. SAW-2011-01806, issued December 1, 2017
Section 401 NCDWR Project No. 20171365, issued November 15, 2017

Dear Ms. Hair:

As you are aware, the North Carolina Department of Transportation (NCDOT) proposes to improve US 401 in Fayetteville from Old Raeford Road to Robeson Street. It has come to our attention that the permit application did not include all of the impacts due to erosion and sedimentation control measures. Although wetland impacts remain the same, there are additional impacts to surface waters, especially temporary channel impacts. Please replace previously provided permit drawings with those included with this request. These changes are summarized as follows:

Site 2: An additional 10 feet of temporary stream impacts have been added at the downstream end. The temporary channel impacts and surface water impacts have increased in the summary sheet by 10 feet and 0.01 acre.

Site 3: Due to bank stabilization, temporary stream impacts were added on both streambanks up and downstream of the culvert. This increased channel impacts by 150 feet and 0.02 ac.

Site 4: The temporary impacts were lengthened slightly on the upstream and downstream end; the resulting total was still just under 0.01ac.

Site 5: The temporary stream impacts were extended on the upstream end (previously stopped just inside the DUE, now extends between the DUE and TDE) and shortened on the downstream end (previously extended to area between DUE and TDE, now stops inside of DUE area). Temporary surface water impacts increased to 0.02 ac.

Regulatory Approvals

Section 404: Modification is hereby requested to USACE Nationwide 404 Permit 12 and 14 as required for the above-described activities.

Section 401: We are requesting a modification also to the Section 401 Water Quality Certification from NCDWR. Authorization to debit the \$570 Permit Application Fee from WBS Element 39049.1.1 is hereby given.

A copy of this permit modification request and its distribution list will be posted on the NCDOT website at: <https://connect.ncdot.gov/resources/Environmental>

Thank you for your assistance with this project. If you have any questions or need additional information, please contact Gordon Cashin at or (919) 707-6107.

Sincerely,



for Philip S. Harris, III, P.E. C.P.M., Unit Head
Environmental Analysis Unit

cc: NCDOT Permit Application Standard Distribution List

-L-

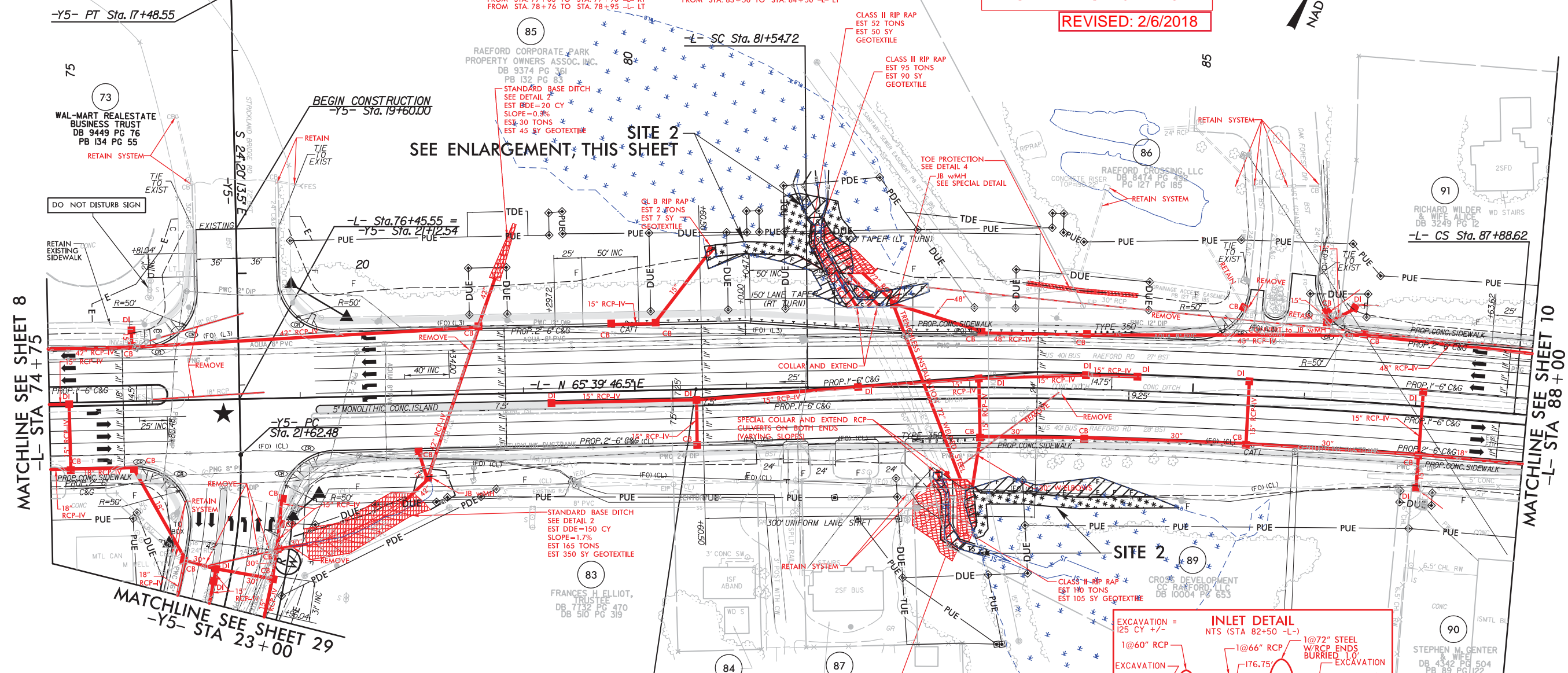
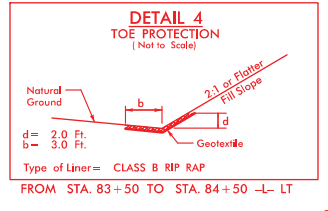
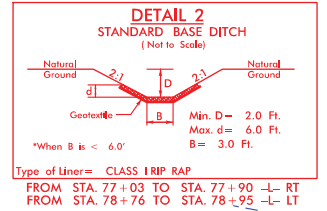
Pls Sta 81+21.39 Os = 0' 27' 17.0" Ls = 100.00' LT = 66.67' ST = 33.33'	PI Sta 84+71.94 Δ = 5' 45' 54.2" (RT) D = 0' 54' 34.0" L = 633.90' T = 317.22' R = 6,300.00' SE = 0.025	Pls Sta 88+21.95 Os = 0' 27' 17.0" Ls = 100.00' LT = 66.67' ST = 33.33'
---	---	---

PERMIT DRAWING
SHEET 5 OF 18
REVISED: 2/6/2018

NC GRID
NAD 83/NA 2011

-Y5-

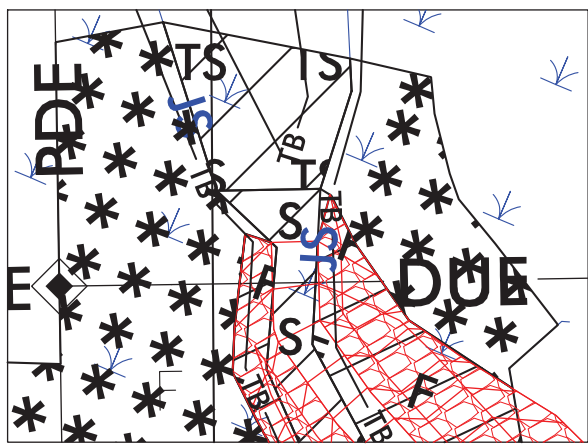
PI Sta 15+94.46 Δ = 3' 10' 44.0" (RT) D = 10' 44' 58.8" L = 317.95' T = 163.86' R = 533.00'
--



MATCHLINE SEE SHEET 8
-L- STA 74+75

MATCHLINE SEE SHEET 10
-L- STA 88+00

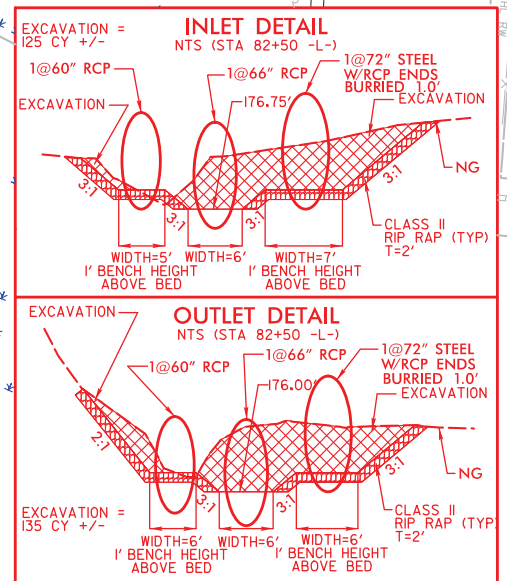
MATCHLINE SEE SHEET 29
-Y5- STA 23+00



SITE 2 INLET

-Y5-

PI Sta 22+82.12 Δ = 25' 18' 13.3" (RT) D = 10' 44' 58.8" L = 235.39' T = 119.65' R = 533.00' SE = 0.02
--



NOTE: SEE SHEET 35 FOR -L- PROFILE
SEE SHEET 46 FOR -Y5- PROFILE

8/17/99

REVISIONS

SCALE
50' 0' 50' 100'
200' 0' 200' 400'

INSET SCALE

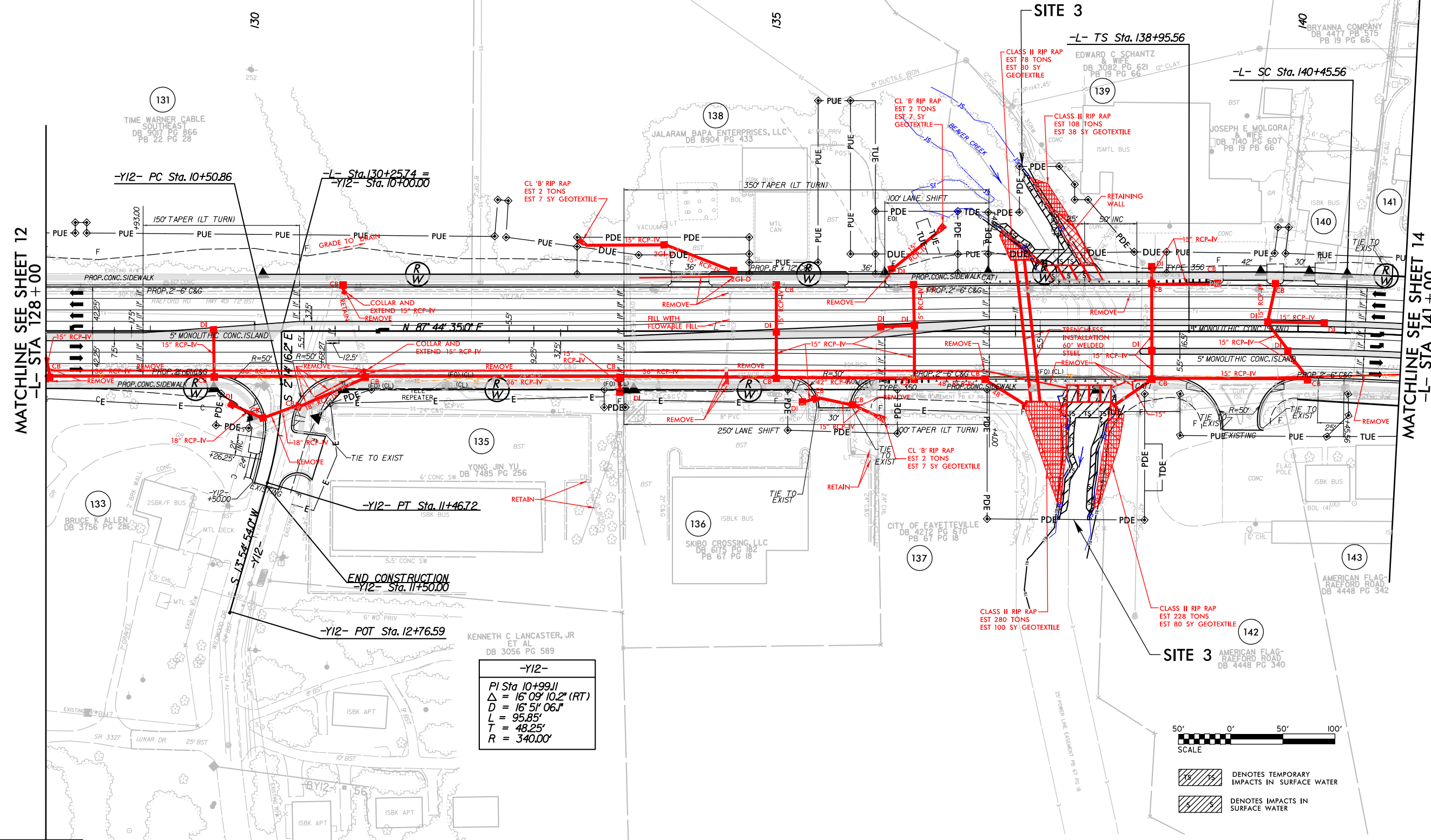
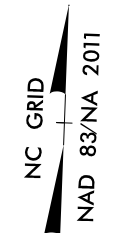
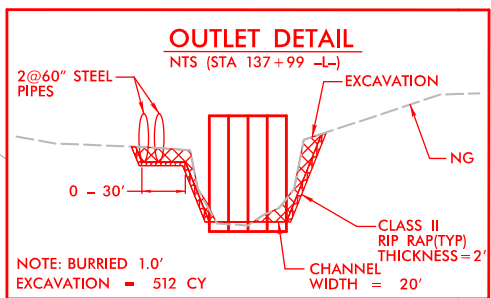
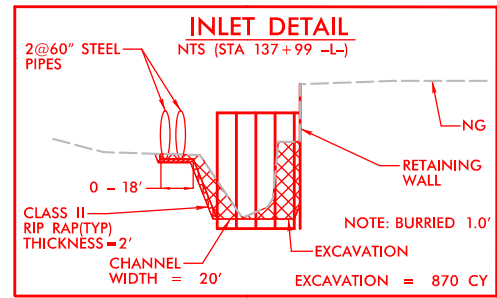
- DENOTES MECHANIZED CLEARING
- DENOTES FILL IN WETLAND
- DENOTES TEMPORARY IMPACTS IN SURFACE WATER
- DENOTES IMPACTS IN SURFACE WATER
- PROPOSED SIGNAL
- PROP CONC SIDEWALK

5:00:31 PM
R:\Hydro\ulics\PERMITS\Environmental\Drawings\4405_Hyd_prm_psh_07.dgn

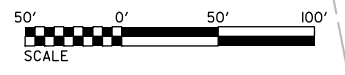
**** A DESIGN EXCEPTION FOR LANE WIDTH IS REQUIRED FOR -L- STA. 38+95.00 TO -L- 319+95.00**

-L-
 Pls Sta 139+95.56 PI Sta 144+71.01
 $\Delta = 1' 43' 07.9"$ $\Delta = 1' 18' 58.8"$ (RT)
 $L_s = 150.00'$ $D = 2' 17' 30.6"$
 $L = 100.00'$ $T = 842.83'$
 $ST = 50.00'$ $T = 425.45'$
 $R = 2,500.00'$
 $SE = 0.03$

PERMIT DRAWING
SHEET 9 OF 18
 REVISED: 2/6/2018



-Y12-
 PI Sta 10+99.11
 $\Delta = 16' 09' 10.2"$ (RT)
 $D = 16' 51' 06.1"$
 $L = 95.85'$
 $T = 48.25'$
 $R = 340.00'$



DENOTES TEMPORARY IMPACTS IN SURFACE WATER
 DENOTES IMPACTS IN SURFACE WATER

NOTE: SEE SHEET 37 FOR -L- PROFILE
 SEE SHEET 47 FOR -Y12- PROFILE

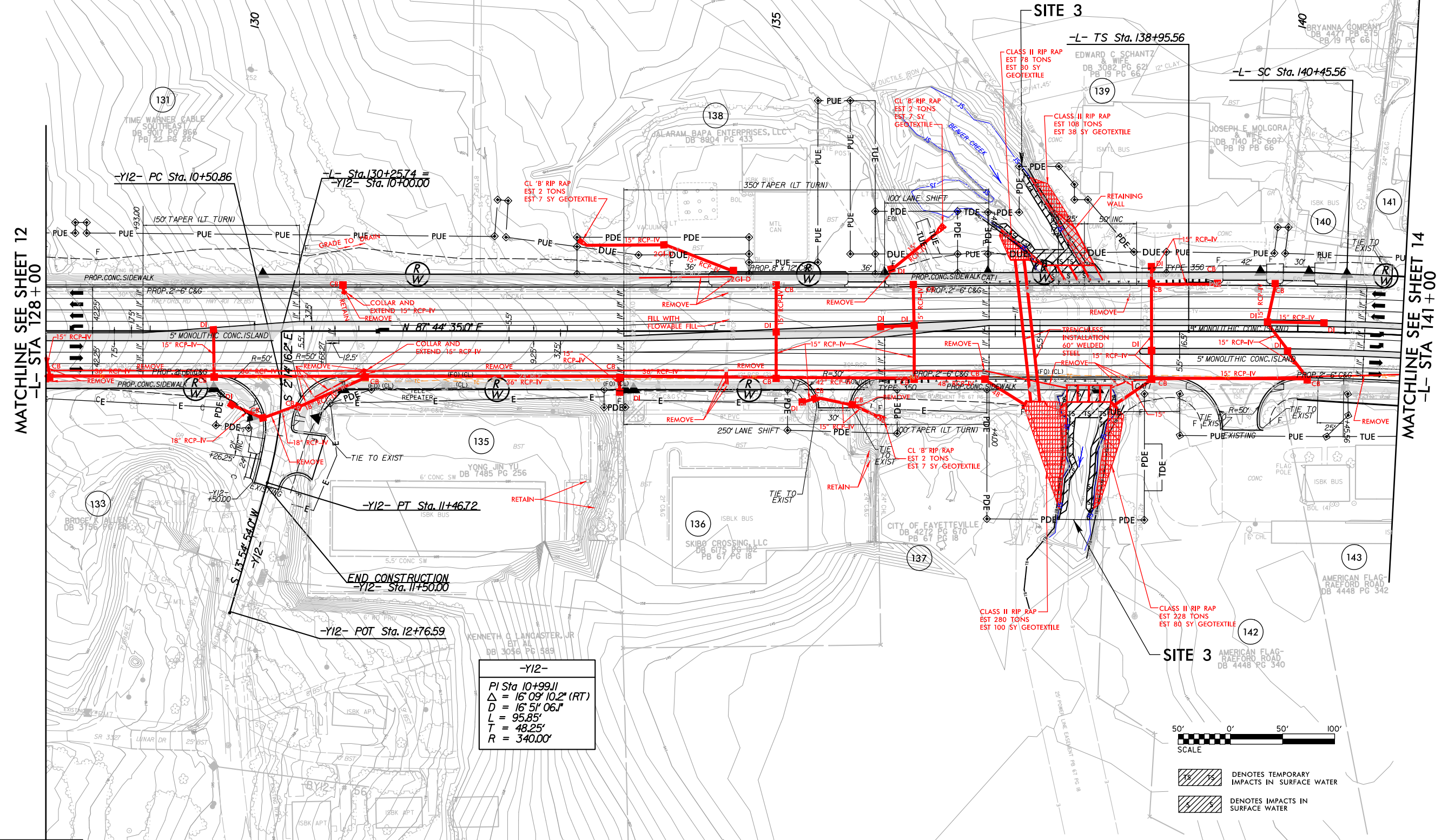
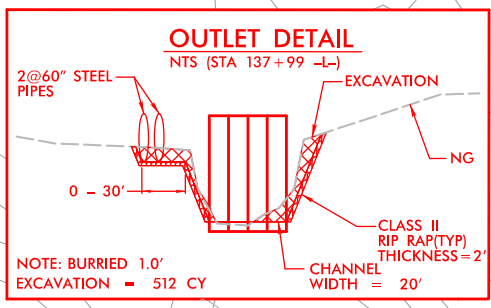
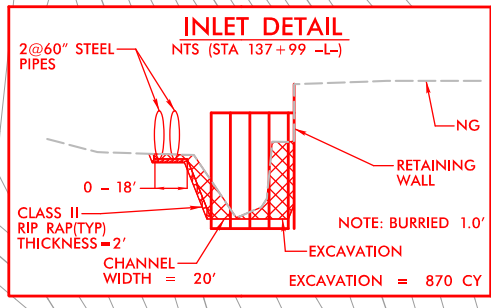
8/17/99
 REVISIONS
 5/00/51 PM
 R:\Hydro\ulics\PERMITS-Environmental\Drawings\4405_Hyd.prm_psh_13.dgn
 13.dwg

** A DESIGN EXCEPTION FOR LANE WIDTH IS REQUIRED FOR -L- STA. 38+95.00 TO -L- 319+95.00

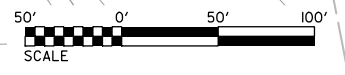
INCOMPLETE PLANS
DO NOT USE FOR R/W ACQUISITION

-L-
 PI Sta 139+95.56 PI Sta 144+71.01
 Δs = 1' 43' 07.9" Δ = 19' 18" 58.8" (RT)
 Ls = 150.00' D = 2' 17" 30.6"
 LT = 100.00' L = 842.83'
 ST = 50.00' T = 425.45'
 R = 2,500.00'
 SE = 0.03

PERMIT DRAWING
SHEET 10 OF 18
REVISED: 2/6/2018



-Y12-
 PI Sta 10+99.11
 Δ = 16' 09" 10.2" (RT)
 D = 16' 51" 06.1"
 L = 95.85'
 T = 48.25'
 R = 340.00'



DENOTES TEMPORARY IMPACTS IN SURFACE WATER
 DENOTES IMPACTS IN SURFACE WATER

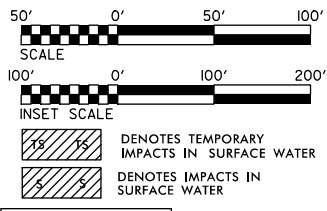
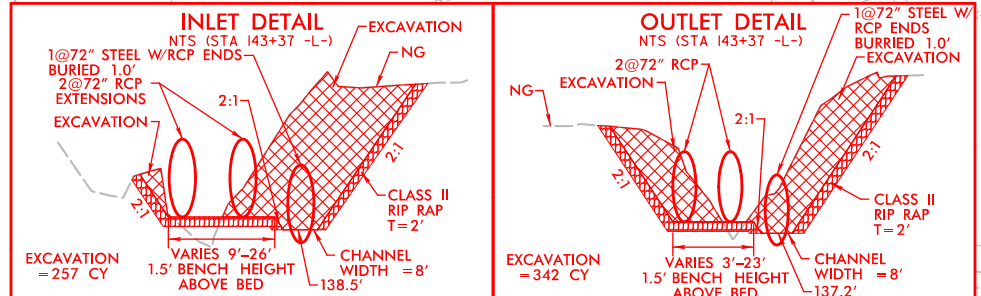
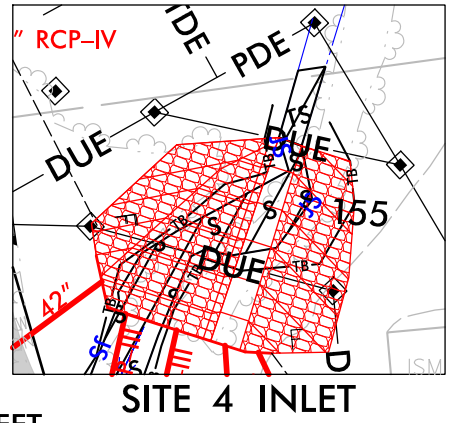
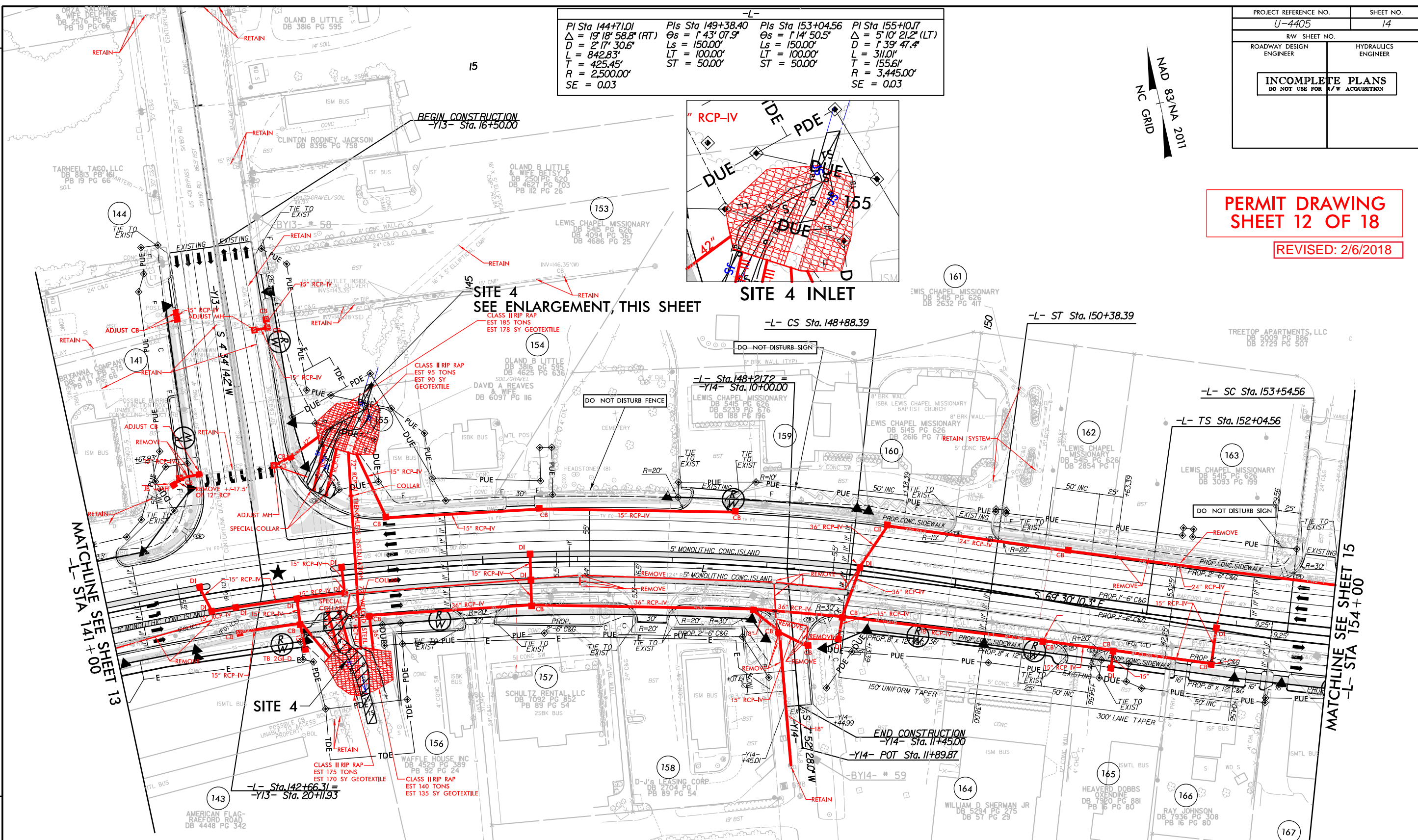
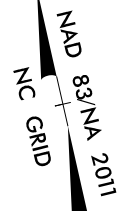
8/17/99
 5:00:56 PM
 R:\Hydro\ulics\PERMITS\Environmental\Drawings\4405_Hyd.prm_psh.13_con.dgn
 13/03/2018 10:44:48 AM

** A DESIGN EXCEPTION FOR LANE WIDTH IS REQUIRED FOR -L- STA. 38+95.00 TO -L- 319+95.00

PERMIT DRAWING SHEET 12 OF 18

REVISED: 2/6/2018

PI Sta 144+71.01 $\Delta = 19' 18" 58.8" (RT)$ $D = 2' 17" 30.6"$ $L = 842.83'$ $T = 425.45'$ $R = 2,500.00'$ $SE = 0.03$	Pls Sta 149+38.40 $\Theta s = 1' 43" 07.9"$ $Ls = 150.00'$ $LT = 100.00'$ $ST = 50.00'$	Pls Sta 153+04.56 $\Theta s = 1' 14" 50.5"$ $Ls = 150.00'$ $LT = 100.00'$ $ST = 50.00'$	PI Sta 155+10.17 $\Delta = 5' 10" 21.2" (LT)$ $D = 1' 39" 47.4"$ $L = 311.01'$ $T = 155.61'$ $R = 3,445.00'$ $SE = 0.03$
---	---	---	--



★ PROPOSED SIGNAL
 PROP CONC SIDEWALK

**** A DESIGN EXCEPTION FOR LANE WIDTH IS REQUIRED FOR -L- STA. 38+95.00 TO -L- 319+95.00**

NOTE: SEE SHEET 37 & 38 FOR -L- PROFILE
SEE SHEET 47 FOR -Y13- PROFILE
SEE SHEET 48 FOR -Y14- PROFILE

REVISIONS

MATCHLINE SEE SHEET 13
-L- STA 141+00

MATCHLINE SEE SHEET 15
-L- STA 154+00

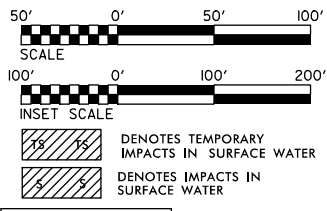
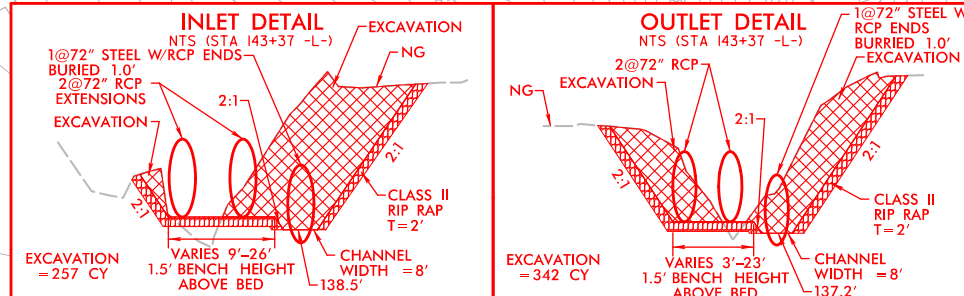
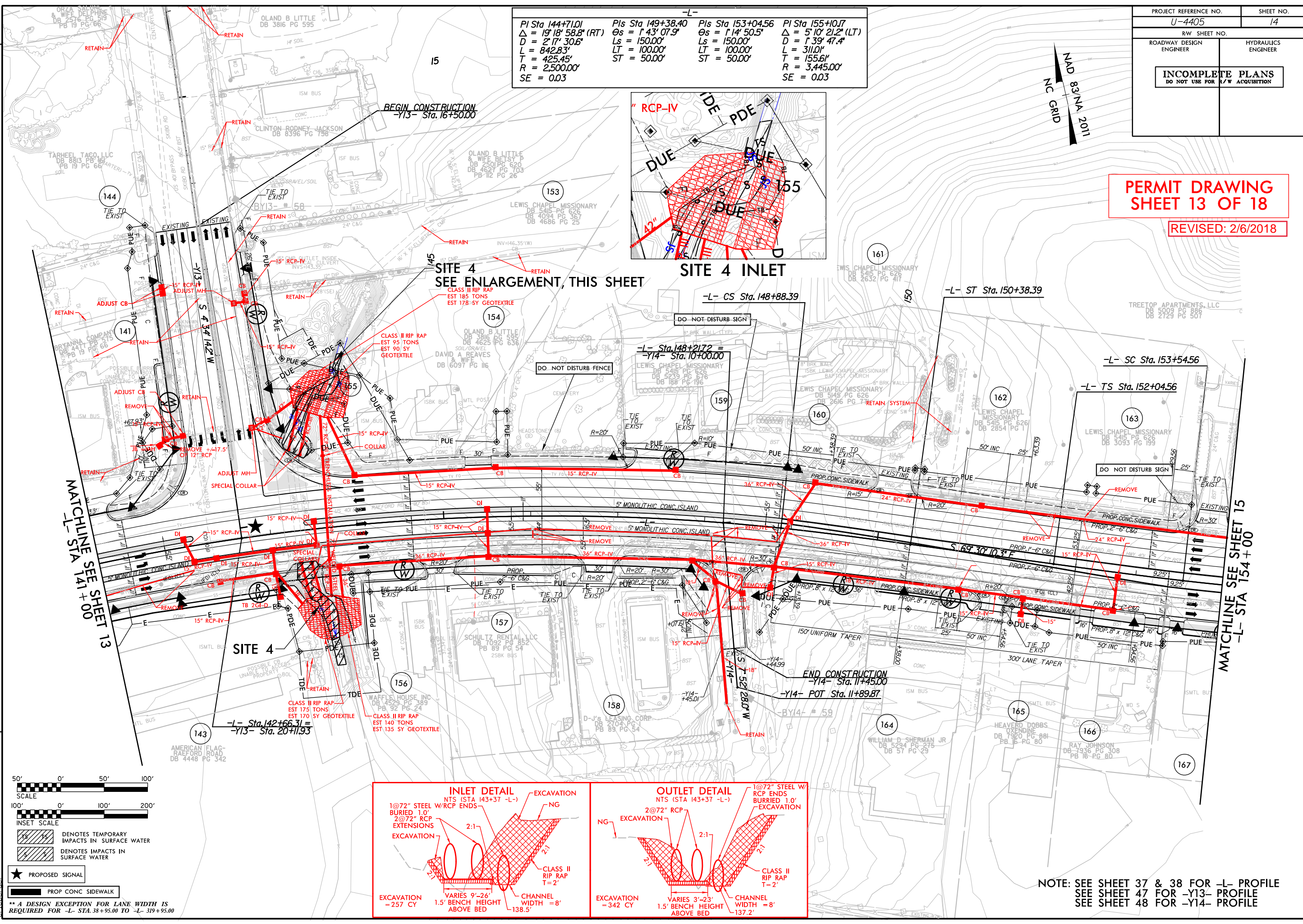
8/17/99
5/04/02 PM
R:\Hyd-aulics\PERMITS-Environmental\Drawings\4405_Hyd.prm_psh_14.dgn

PROJECT REFERENCE NO. U-4405	SHEET NO. 14
RW SHEET NO.	
ROADWAY DESIGN ENGINEER	HYDRAULICS ENGINEER
INCOMPLETE PLANS DO NOT USE FOR R/W ACQUISITION	

PERMIT DRAWING SHEET 13 OF 18

REVISED: 2/6/2018

PI Sta 144+71.01 $\Delta = 19' 18" 58.8" (RT)$ $D = 2' 17" 30.6"$ $L = 842.83'$ $T = 425.45'$ $R = 2,500.00'$ $SE = 0.03$	Pls Sta 149+38.40 $\Theta s = 1' 43" 07.9"$ $Ls = 150.00'$ $LT = 100.00'$ $ST = 50.00'$	Pls Sta 153+04.56 $\Theta s = 1' 14" 50.5"$ $Ls = 150.00'$ $LT = 100.00'$ $ST = 50.00'$	PI Sta 155+10.17 $\Delta = 5' 10" 21.2" (LT)$ $D = 1' 39" 47.4"$ $L = 311.01'$ $T = 155.61'$ $R = 3,445.00'$ $SE = 0.03$
---	---	---	--



★ PROPOSED SIGNAL

▬ PROP CONC SIDEWALK

*** A DESIGN EXCEPTION FOR LANE WIDTH IS REQUIRED FOR -L- STA. 38+95.00 TO -L- 319+95.00

NOTE: SEE SHEET 37 & 38 FOR -L- PROFILE
SEE SHEET 47 FOR -Y13- PROFILE
SEE SHEET 48 FOR -Y14- PROFILE

REVISIONS

MATCHLINE SEE SHEET 13
-L- STA 141+00

MATCHLINE SEE SHEET 15
-L- STA 154+00

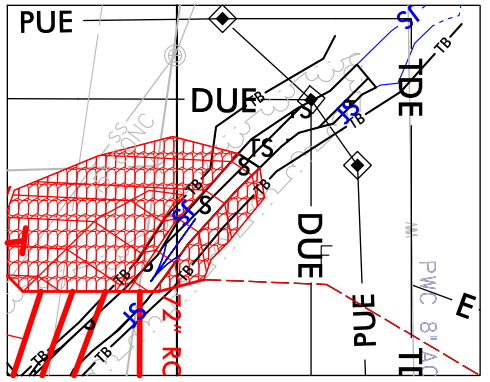
8/17/99

5/04/08 PM R:\Hyd-a\lics\PERMITS_Environmental\Drawings\4405_Hyd.prm_psh_14_com.dgn

PERMIT DRAWING
SHEET 15 OF 18

REVISED: 2/6/2018

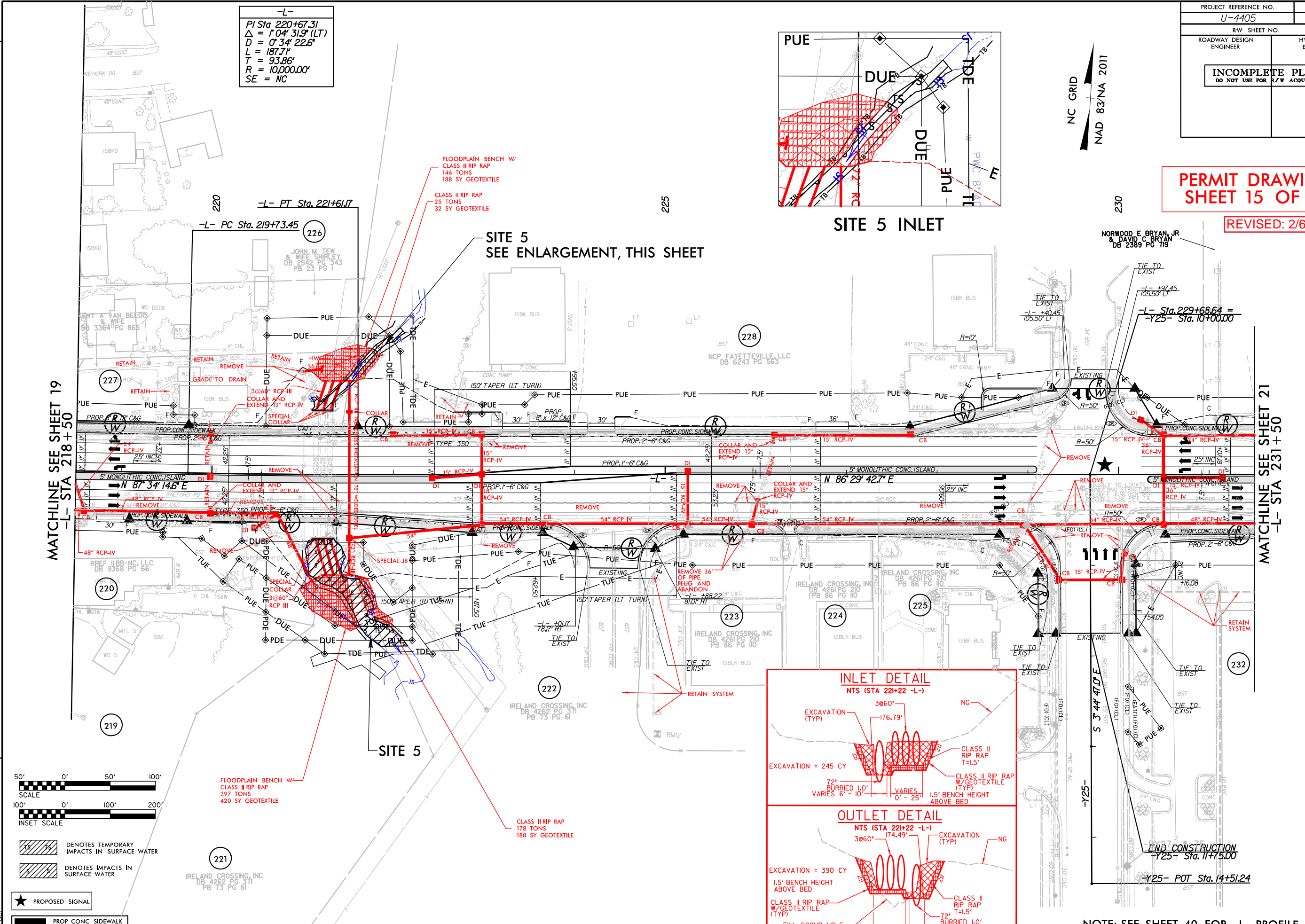
NC GRID
NAD 83/NA 2011



SITE 5 INLET

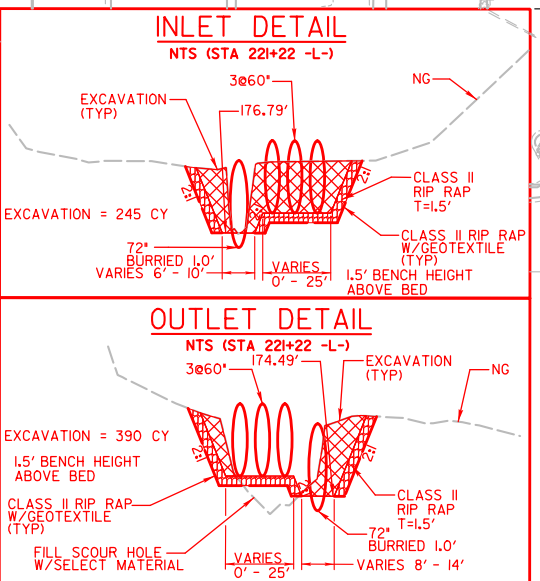
-L-
PI Sta 220+67.31
 $\Delta = 1^{\circ}04'31.9"$ (LT)
D = 0'34'22.6"
L = 187.71'
T = 93.86'
R = 10,000.00'
SE = NC

**SITE 5
SEE ENLARGEMENT, THIS SHEET**

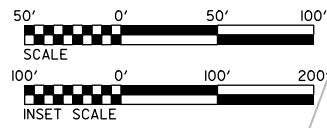


MATCHLINE SEE SHEET 19
-L- STA 218+50

MATCHLINE SEE SHEET 21
-L- STA 231+50



NOTE: SEE SHEET 40 FOR -L- PROFILE
SEE SHEET 48 FOR -Y25- PROFILE



- DENOTES TEMPORARY IMPACTS IN SURFACE WATER
- DENOTES IMPACTS IN SURFACE WATER
- PROPOSED SIGNAL
- PROP CONC SIDEWALK

**** A DESIGN EXCEPTION FOR LANE WIDTH IS REQUIRED FOR -L- STA. 38+95.00 TO -L- 319+95.00**

REVISIONS

8/17/99
5/04/13 PM
R:\Hydro\ulics\PERMITS\Environmental\Drawings\4405_Hyd_prm_psh_20.dgn
R:\Hydro\ulics\PERMITS\Environmental\Drawings\4405_Hyd_prm_psh_20.dgn

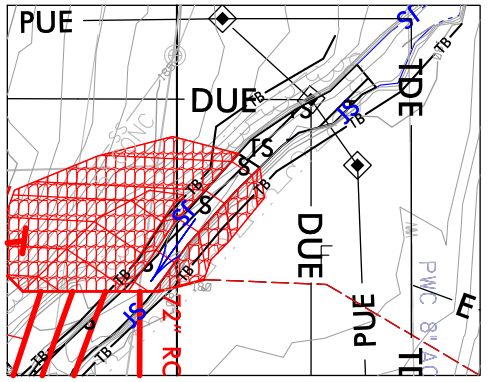
PROJECT REFERENCE NO. U-4405	SHEET NO. 20
RW SHEET NO.	
ROADWAY DESIGN ENGINEER	HYDRAULICS ENGINEER
INCOMPLETE PLANS DO NOT USE FOR R/W ACQUISITION	

PERMIT DRAWING
SHEET 16 OF 18

REVISED: 2/6/2018

8/17/99

-L-
PI Sta 220+67.31
 $\Delta = 1'04'31.9''$ (LT)
 $D = 0'34'22.6''$
 $L = 187.71'$
 $T = 93.86'$
 $R = 10,000.00'$
 $SE = NC$



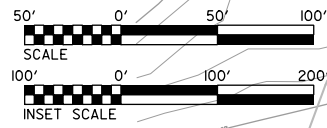
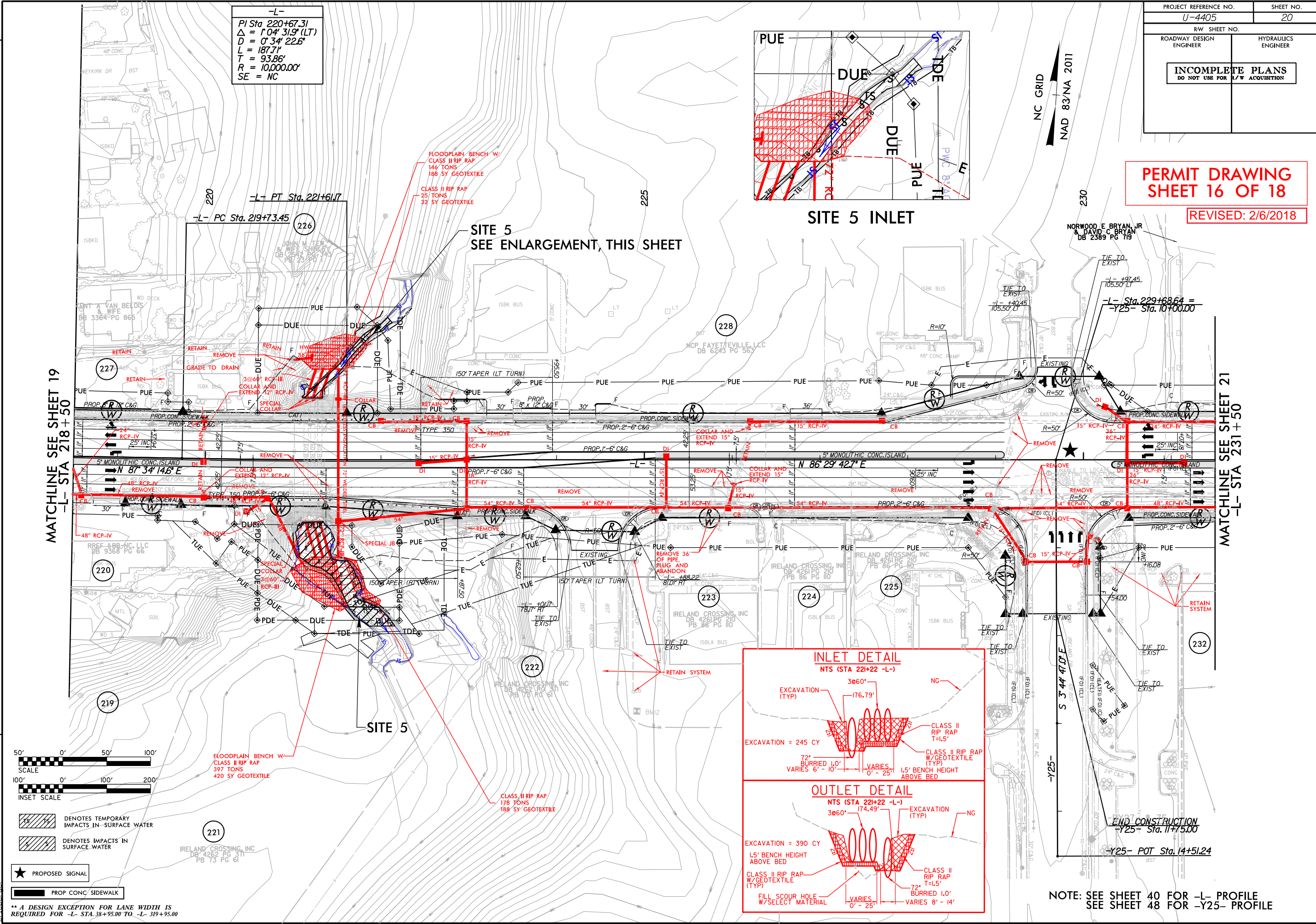
NC GRID
NAD 83/NA 2011

SITE 5 INLET

**SITE 5
SEE ENLARGEMENT, THIS SHEET**

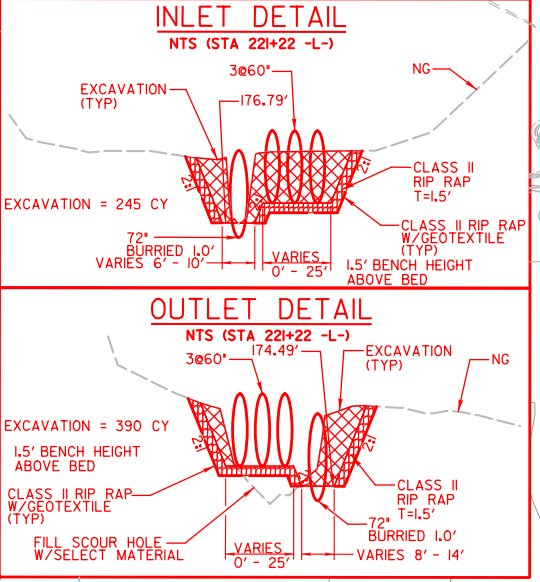
MATCHLINE SEE SHEET 19
-L- STA 218+50

MATCHLINE SEE SHEET 21
-L- STA 231+50



- DENOTES TEMPORARY IMPACTS IN SURFACE WATER
- DENOTES IMPACTS IN SURFACE WATER
- PROPOSED SIGNAL
- PROP CONC/ SIDEWALK

**** A DESIGN EXCEPTION FOR LANE WIDTH IS REQUIRED FOR -L- STA. 38+95.00 TO -L- 319+95.00**



**NOTE: SEE SHEET 40 FOR -L- PROFILE
SEE SHEET 48 FOR -Y25- PROFILE**

