

ALTERNATIVES FOR DETAILED STUDY

US 158 (SHORTCUT ROAD), FROM EAST OF NC 34 (SHAWBORO ROAD) AT BELCROSS TO NC 168 (CARATOKE HIGHWAY) CAMDEN - CURRITUCK COUNTIES TIP PROJECT R-2574

December 18, 2014

PURPOSE OF THIS MEETING

The purpose of today's meeting is to discuss project alternatives and to reach concurrence on the alternatives to be studied in detail (Concurrence Point 2).

PROJECT DESCRIPTION

TIP Project R-2574 is included in the amended 2012-2020 North Carolina State Transportation Improvement Program (STIP). The project extends from NC 34 at Belcross in Camden County to NC 168 in Currituck County, a distance of approximately 10.6 miles (Figure 1). Proposed improvements include four 12-foot travel lanes, a 46-foot median and 8-foot grassed shoulders (4-foot paved).

PROJECT SCHEDULE

The right of way acquisition and construction schedule in the 2012-2020 STIP is:
Begin Right of Way Acquisition: State Fiscal Year 2020
Construction is unfunded in the 2012-2020 STIP.

PROJECT PURPOSE

Formal concurrence on the purpose of the project was reached at a NEPA/404 Merger Team meeting held on September 19, 2013. Team members agreed on the following purpose statement for the project: The purpose of the proposed project is to improve mobility and increase the roadway carrying capacity of US 158 in the project area to support both regional transportation needs and hurricane evacuation

PROJECT ALTERNATIVES

Alternatives for improvement of existing facilities have been developed for the proposed project.

No Build Alternative

The No Build Alternative would not provide any substantial improvements to US 158 within the study area; only typical maintenance activities would occur. The No Build Alternative would not meet the purpose and need of the project.

Widen Existing US 158

Widening existing US 158 would increase roadway capacity as well as support regional transportation needs and hurricane evacuation. The project has been divided into six sections in order to analyze potential impacts. These sections are:

- Section 1 – West end of project to just west of SR 1135 - 1.5 miles
- Section 2 – Just west of SR 1135 in Camden County to approximately 0.6 mile west of the western SR 1148 intersection in Currituck County – 0.7 mile
- Section 3 – Approximately 0.6 mile west of the western SR 1148 intersection to approx. 0.7 mile east of the eastern SR 1148 intersection - 3.5 miles
- Section 4 – Approximately 0.7 mile east of the eastern SR 1148 intersection to approximately 0.1 mile east of Maple Road - 1.4 miles
- Section 5 – Approximately 0.1 mile east of Maple Road to approximately 0.2 mile west of Will Poyner Lane – 1.1 miles
- Section 6 – Approximately 0.2 mile west of Will Poyner Lane to east end of project - 1.6 miles

Both north side and south side widening have been considered within each section. Figure 2 presents the sections and the table below compares the impacts of east and west side widening for each section.

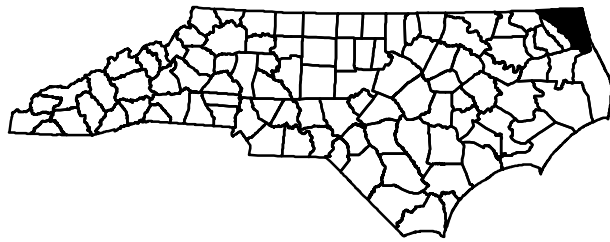
Section	1		2		3		4		5		6	
North Side (N) South Side (S)	N	S	N	S	N	S	N	S	N	S	N	S
Delineated Wetlands (ac)	0	0	13.34	13.30	0.39	0.57	28.68	27.91	0.37	0.11	1.01	0.42
Streams (ft)	0	0	0	0	239	298	0	0	0	0	0	0
Surface Water* (ac)	<0.01	0.01	3.81	3.76	0.71	0.72	14.50	14.87	0.05	0.08	0.42	0.42
Homes Relocated	2	4	1	1	14	9	0	0	2	6	19	17
Businesses Relocated	3	1	0	0	1	0	0	0	0	0	1	1
Non-Profit Relocated**	0	0	0	0	1	1	0	0	1	0	0	0
RW From Historic Property?	No	No	No	No	No	No	No	No	No	No	No	No
Cemeteries	0	0	0	0	0	0	0	0	0	0	0	0
Community Facilities Affected***	None	None	None	None	None	None	None	None	Airport School	School	None	None

250-foot impact area

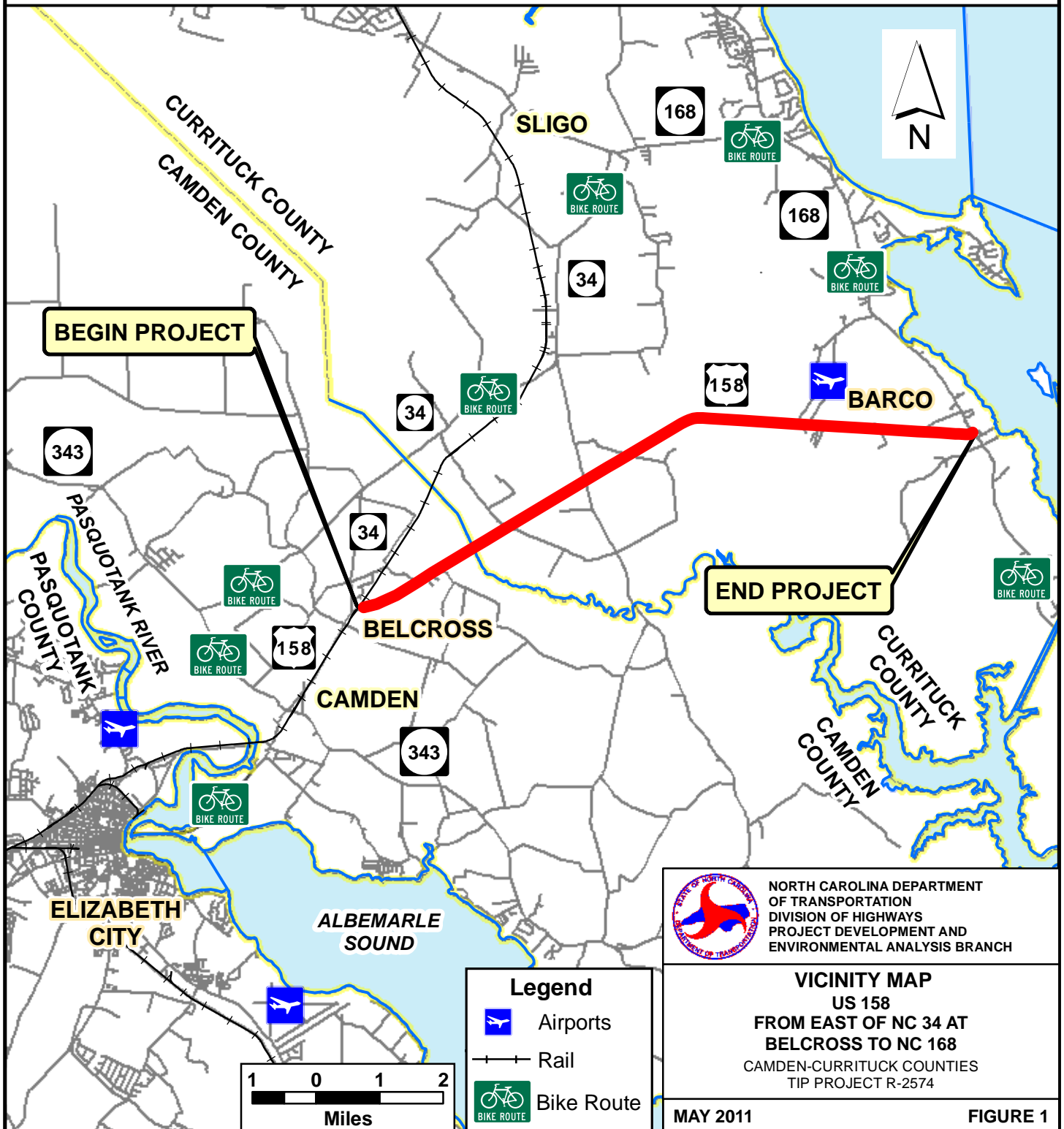
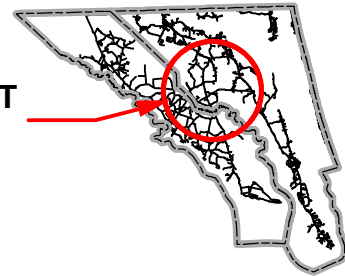
*Tributaries to Waters of the U.S.

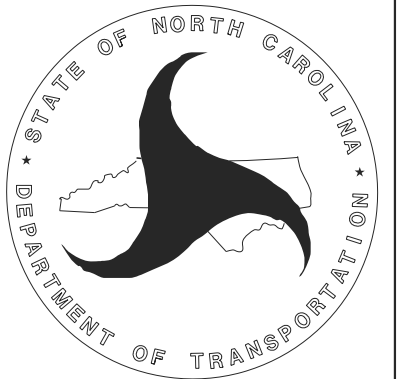
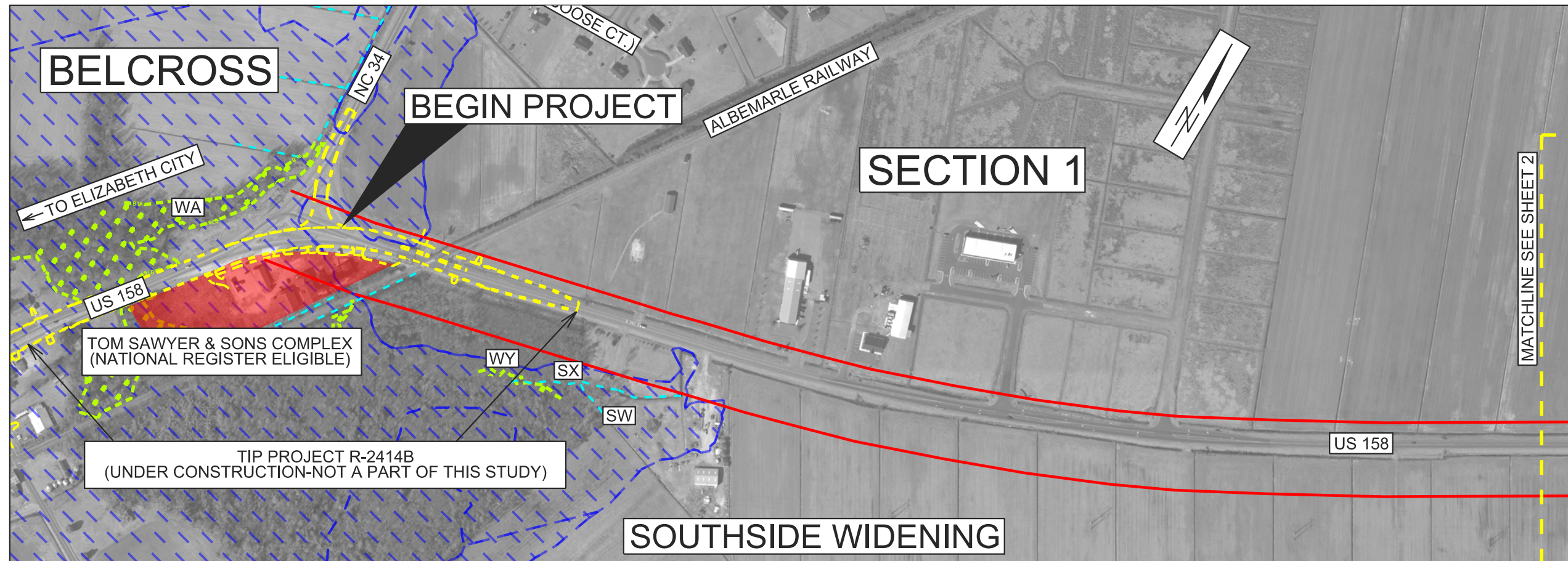
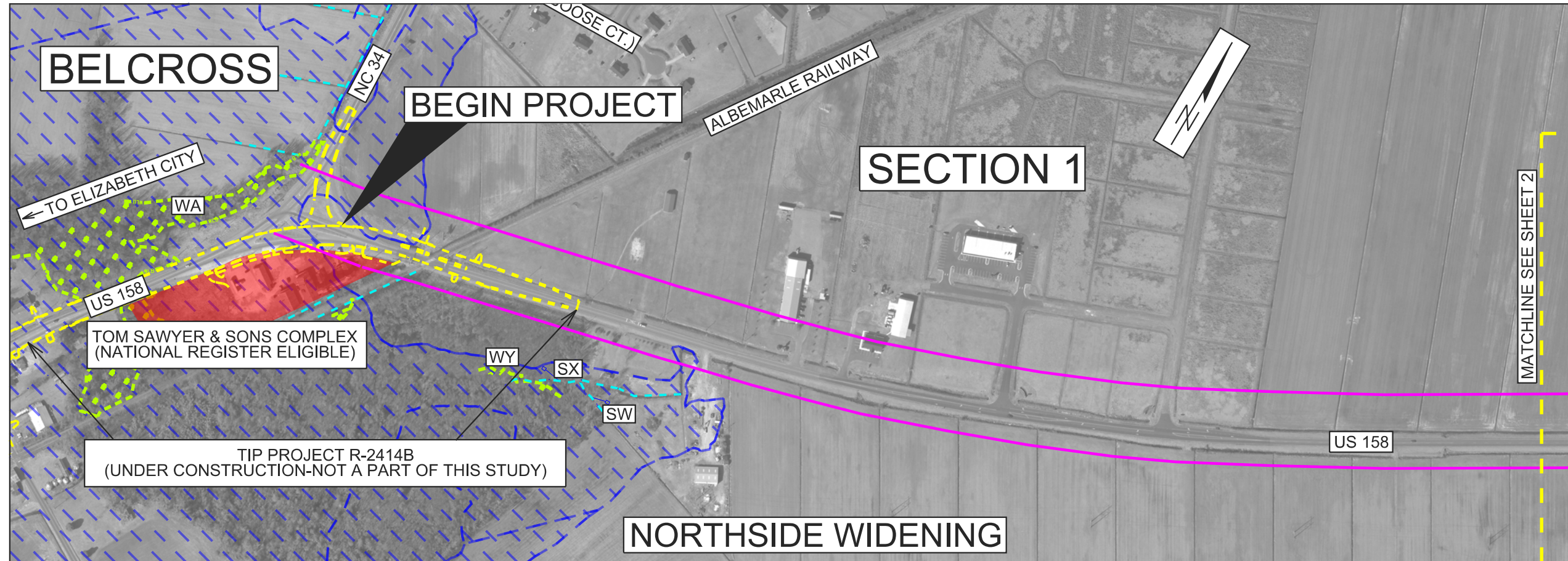
**Churches

***Community facilities that right of way would be required from, though they would not be relocated.



PROJECT
AREA





NORTH CAROLINA
DEPARTMENT OF TRANSPORTATION
DIVISION OF HIGHWAYS
PROJECT DEVELOPMENT
AND
ENVIRONMENTAL ANALYSIS
UNIT

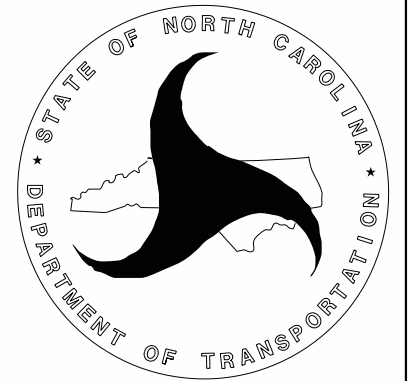
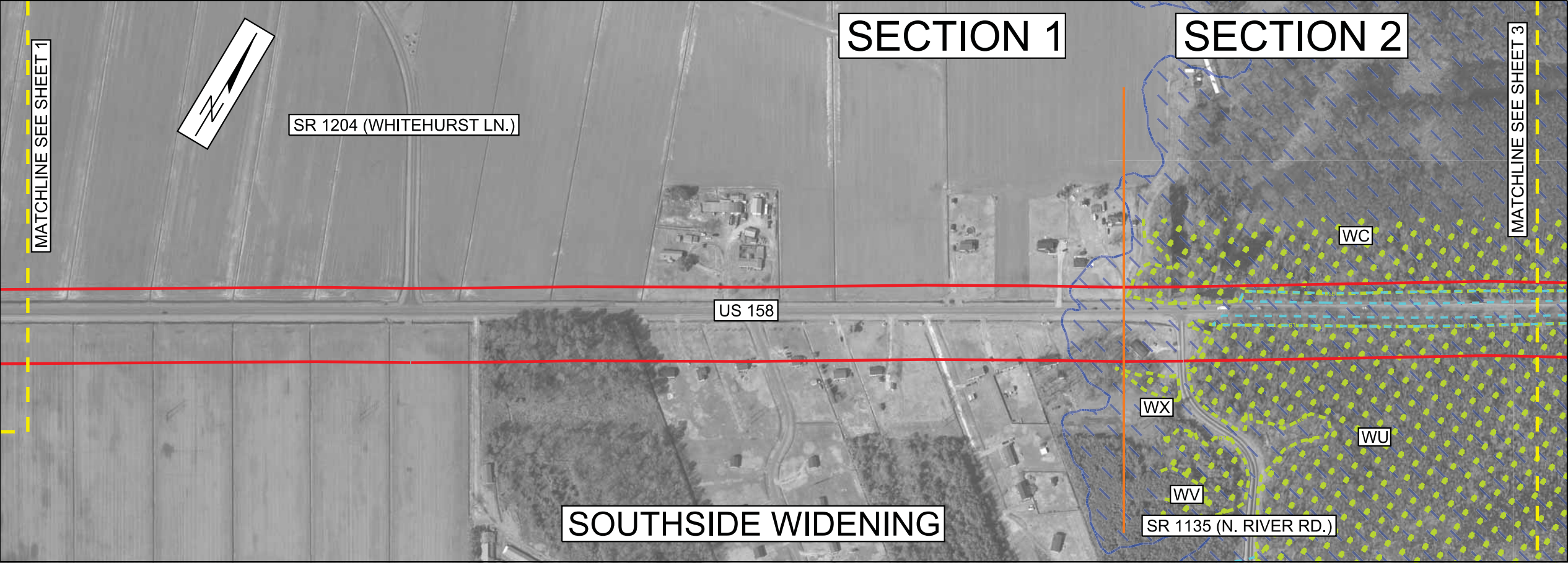
US 158
FROM NC 34 AT BELCROSS
TO NC 168 AT BARCO
CAMDEN AND
CURRITUCK COUNTIES
TIP PROJECT R-2574

LEGEND

- NORTHSIDE WIDENING
- SOUTHSIDE WIDENING
- - - ADJACENT PROJECT (NOT A PART OF THIS STUDY)
- ⬭ DELINEATED WETLANDS
- ⬭ DELINEATED STREAMS OR OPEN WATER
- ⬭ 100-YEAR FLOODPLAIN
- HISTORIC PROPERTY (NATIONAL REGISTER ELIGIBLE)

0 FEET 400

SHEET 1 OF 12
FIGURE 2

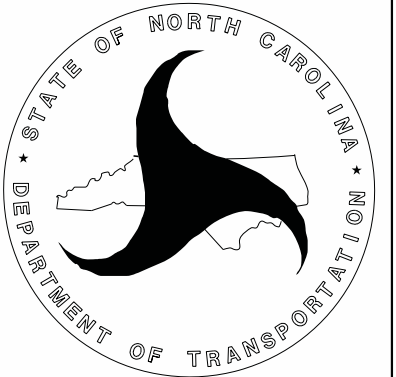
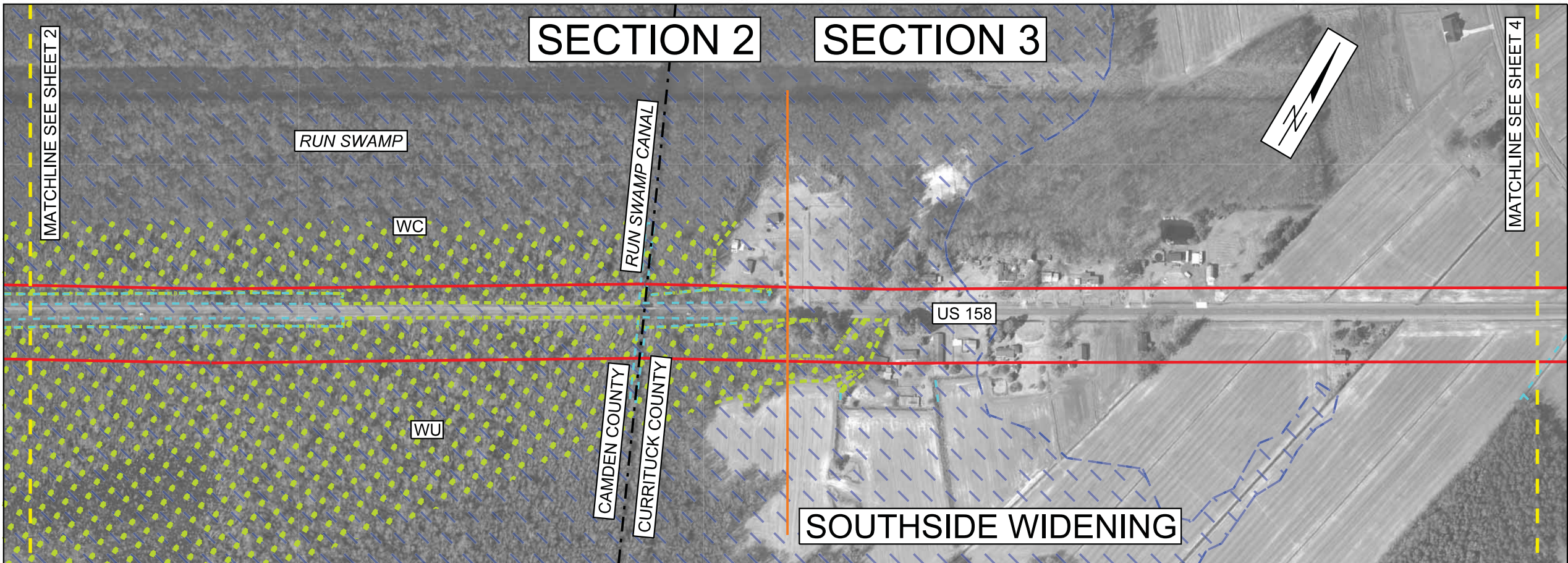
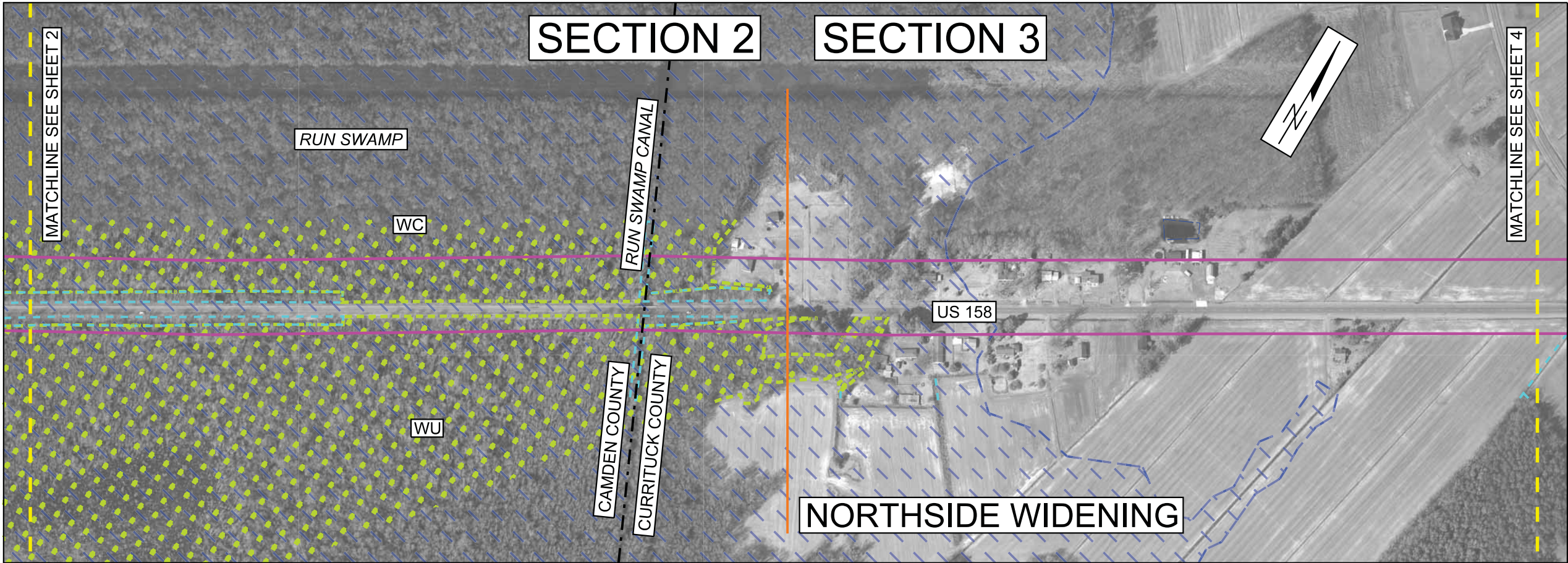


NORTH CAROLINA
DEPARTMENT OF TRANSPORTATION
DIVISION OF HIGHWAYS
PROJECT DEVELOPMENT
AND
ENVIRONMENTAL ANALYSIS
UNIT

US 158
FROM NC 34 AT BELCROSS
TO NC 168 AT BARCO
CAMDEN AND
CURRITUCK COUNTIES
TIP PROJECT R-2574

- LEGEND
- NORTHSIDE WIDENING
 - SOUTHSIDE WIDENING
 - ADJACENT PROJECT (NOT A PART OF THIS STUDY)
 - DELINEATED WETLANDS
 - DELINEATED STREAMS OR OPEN WATER
 - 100-YEAR FLOODPLAIN
 - HISTORIC PROPERTY (NATIONAL REGISTER ELIGIBLE)





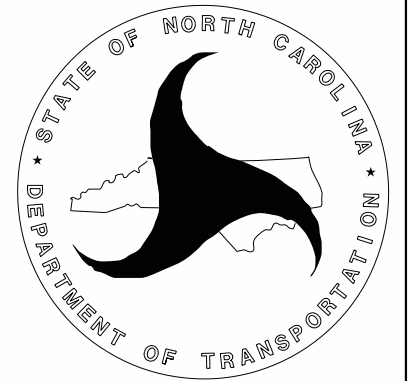
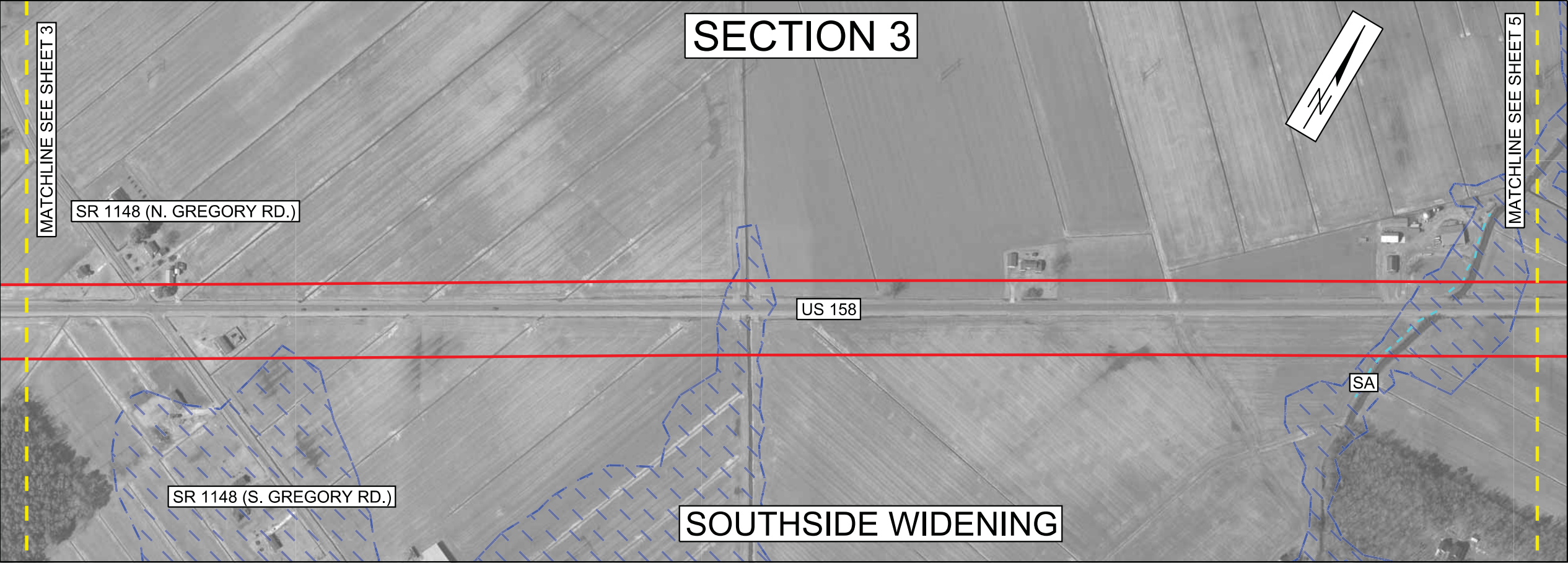
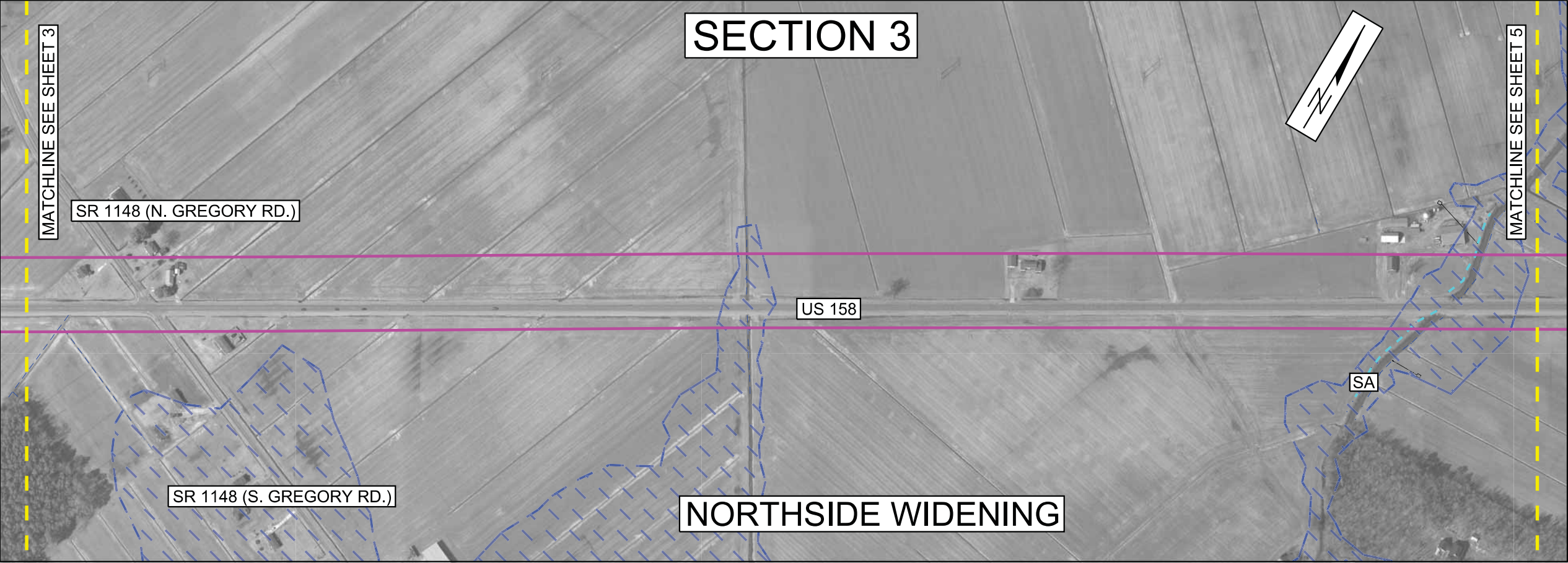
NORTH CAROLINA
DEPARTMENT OF TRANSPORTATION
DIVISION OF HIGHWAYS
PROJECT DEVELOPMENT
AND
ENVIRONMENTAL ANALYSIS
UNIT

US 158
FROM NC 34 AT BELCROSS
TO NC 168 AT BARCO
CAMDEN AND
CURRITUCK COUNTIES
TIP PROJECT R-2574

LEGEND

- NORTHSIDE WIDENING
- SOUTHSIDE WIDENING
- - - ADJACENT PROJECT (NOT A PART OF THIS STUDY)
- DELINEATED WETLANDS
- - - DELINEATED STREAMS OR OPEN WATER
- 100-YEAR FLOODPLAIN
- HISTORIC PROPERTY (NATIONAL REGISTER ELIGIBLE)

0 FEET 400

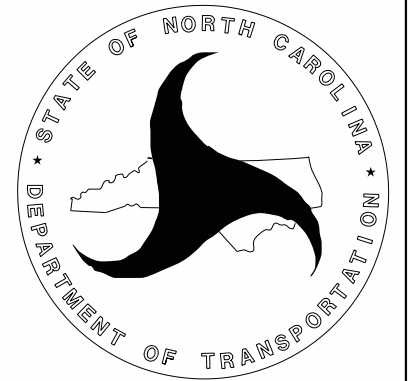
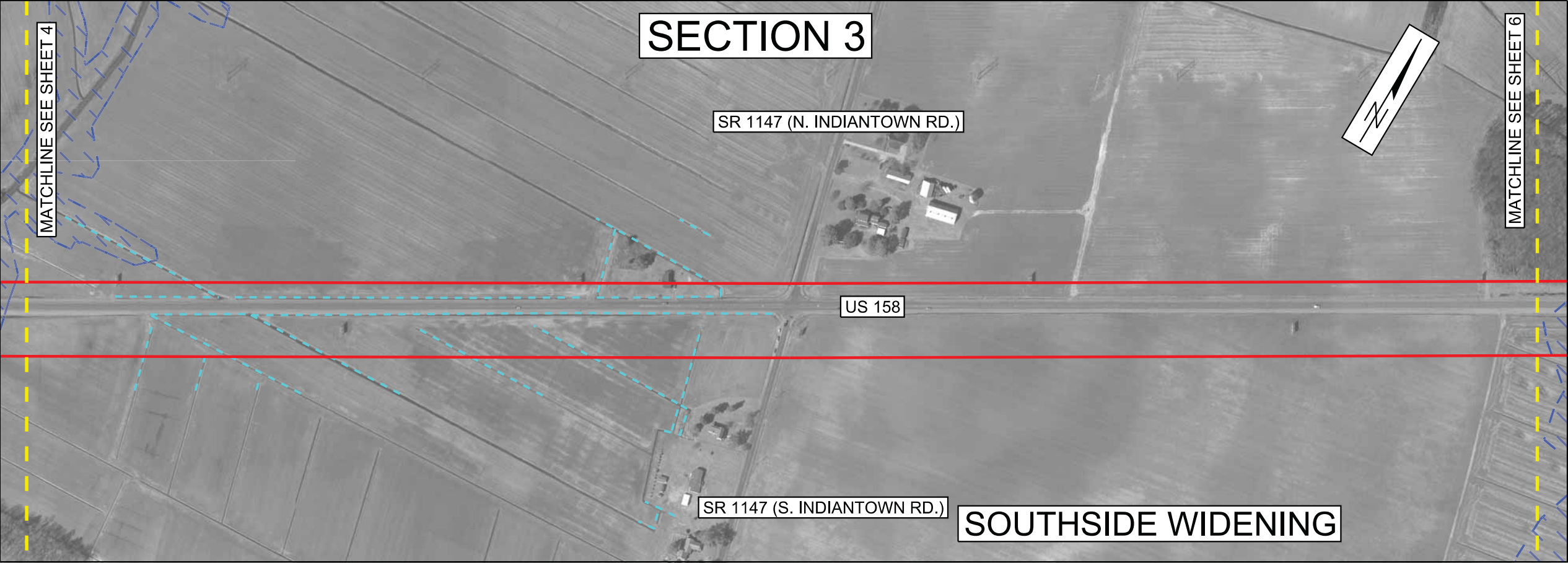
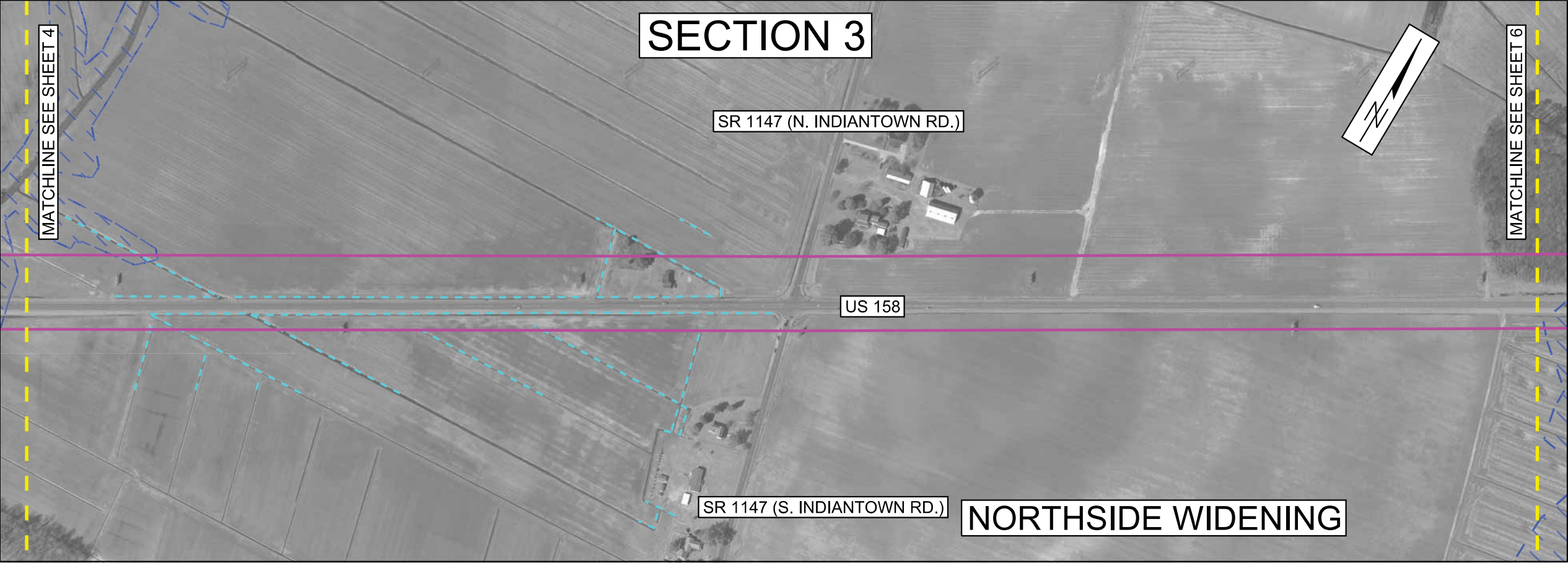


NORTH CAROLINA
DEPARTMENT OF TRANSPORTATION
DIVISION OF HIGHWAYS
PROJECT DEVELOPMENT
AND
ENVIRONMENTAL ANALYSIS
UNIT

US 158
FROM NC 34 AT BELCROSS
TO NC 168 AT BARCO
CAMDEN AND
CURRITUCK COUNTIES
TIP PROJECT R-2574

- LEGEND**
- NORTHSIDE WIDENING
 - SOUTHSIDE WIDENING
 - ADJACENT PROJECT (NOT A PART OF THIS STUDY)
 - DELINEATED WETLANDS
 - DELINEATED STREAMS OR OPEN WATER
 - 100-YEAR FLOODPLAIN
 - HISTORIC PROPERTY (NATIONAL REGISTER ELIGIBLE)



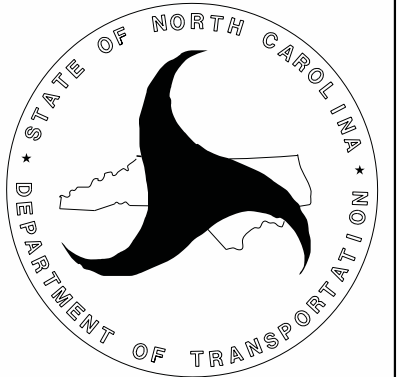
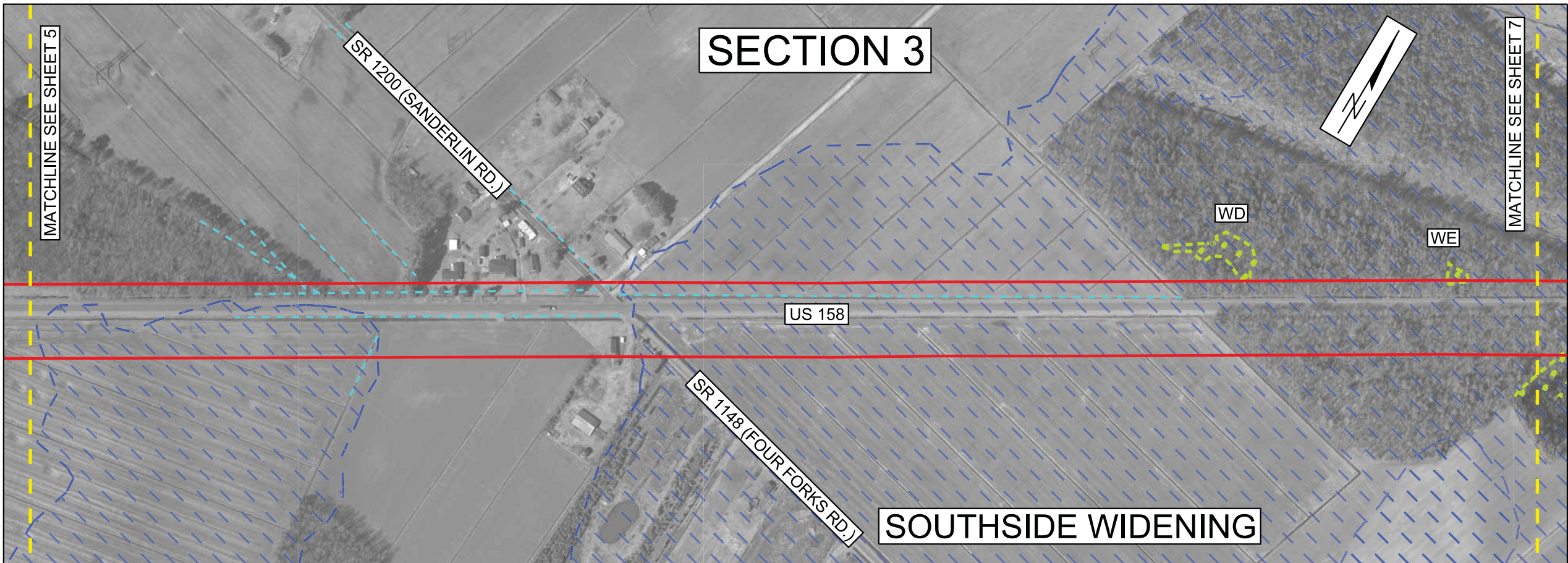
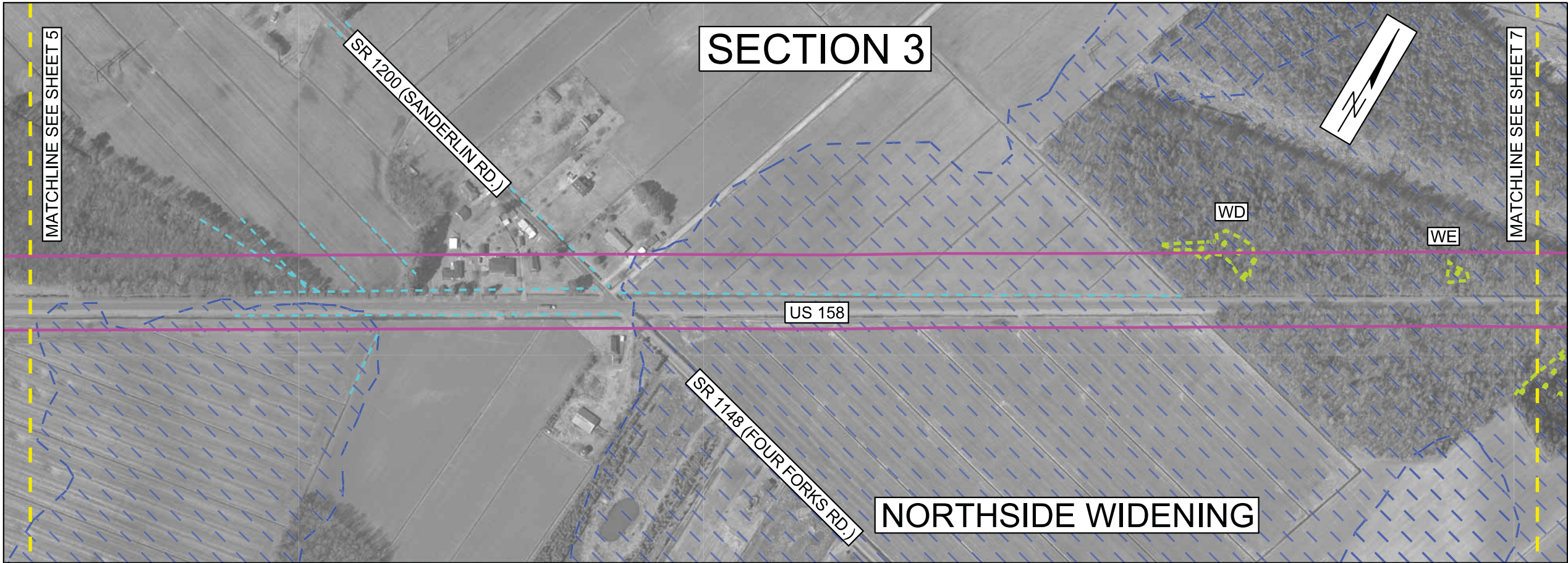


NORTH CAROLINA
DEPARTMENT OF TRANSPORTATION
DIVISION OF HIGHWAYS
PROJECT DEVELOPMENT
AND
ENVIRONMENTAL ANALYSIS
UNIT

US 158
FROM NC 34 AT BELCROSS
TO NC 168 AT BARCO
CAMDEN AND
CURRITUCK COUNTIES
TIP PROJECT R-2574

- LEGEND**
- NORTHSIDE WIDENING
 - SOUTHSIDE WIDENING
 - ADJACENT PROJECT (NOT A PART OF THIS STUDY)
 - DELINEATED WETLANDS
 - DELINEATED STREAMS OR OPEN WATER
 - 100-YEAR FLOODPLAIN
 - HISTORIC PROPERTY (NATIONAL REGISTER ELIGIBLE)

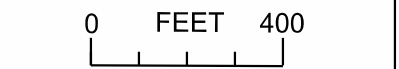


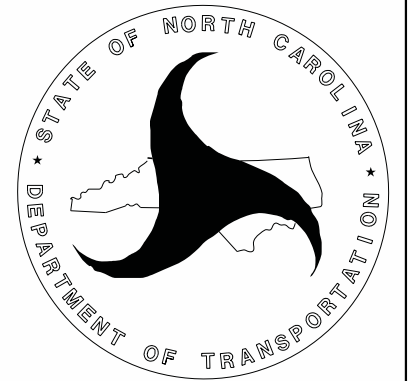


NORTH CAROLINA
DEPARTMENT OF TRANSPORTATION
DIVISION OF HIGHWAYS
PROJECT DEVELOPMENT
AND
ENVIRONMENTAL ANALYSIS
UNIT

US 158
FROM NC 34 AT BELCROSS
TO NC 168 AT BARCO
CAMDEN AND
CURRITUCK COUNTIES
TIP PROJECT R-2574

- LEGEND**
- NORTHSIDE WIDENING
 - SOUTHSIDE WIDENING
 - ADJACENT PROJECT (NOT A PART OF THIS STUDY)
 - DELINEATED WETLANDS
 - DELINEATED STREAMS OR OPEN WATER
 - 100-YEAR FLOODPLAIN
 - HISTORIC PROPERTY (NATIONAL REGISTER ELIGIBLE)





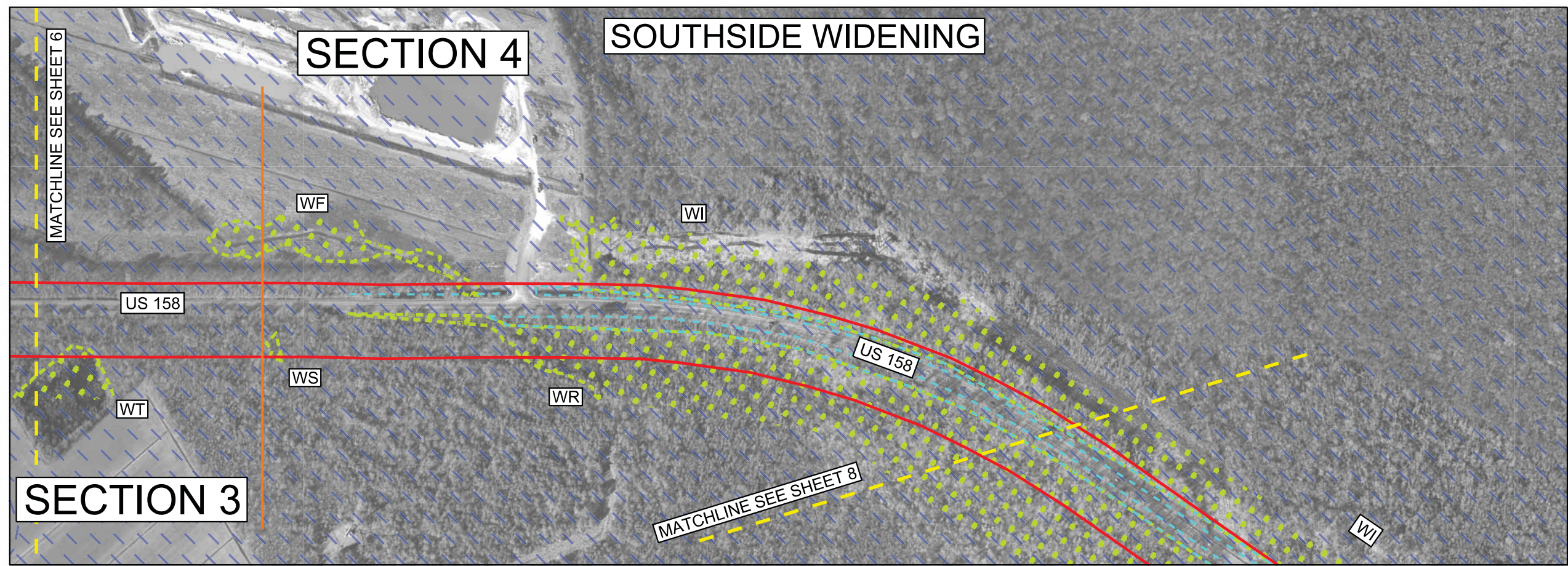
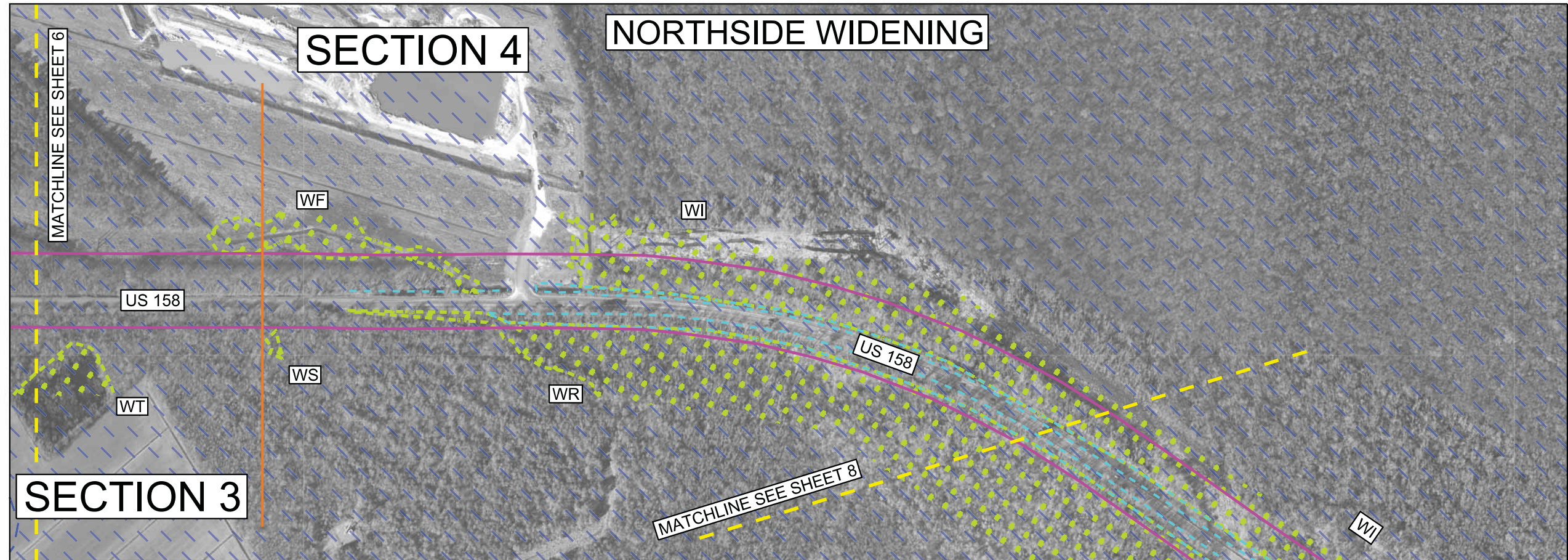
NORTH CAROLINA
DEPARTMENT OF TRANSPORTATION
DIVISION OF HIGHWAYS
PROJECT DEVELOPMENT
AND
ENVIRONMENTAL ANALYSIS
UNIT

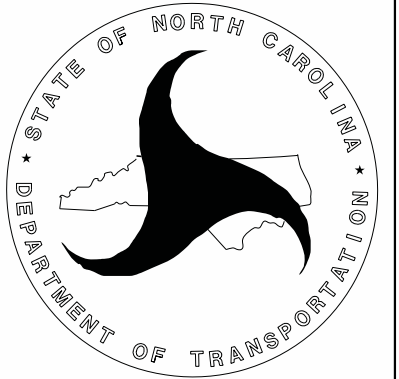
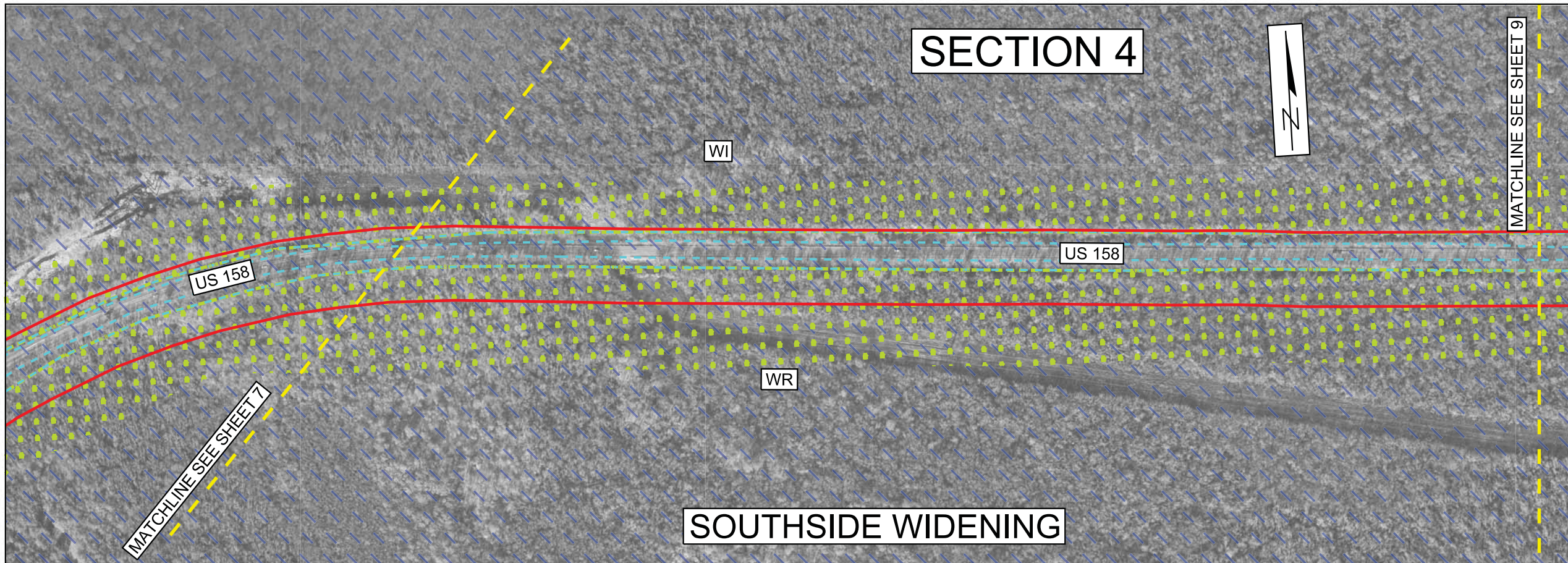
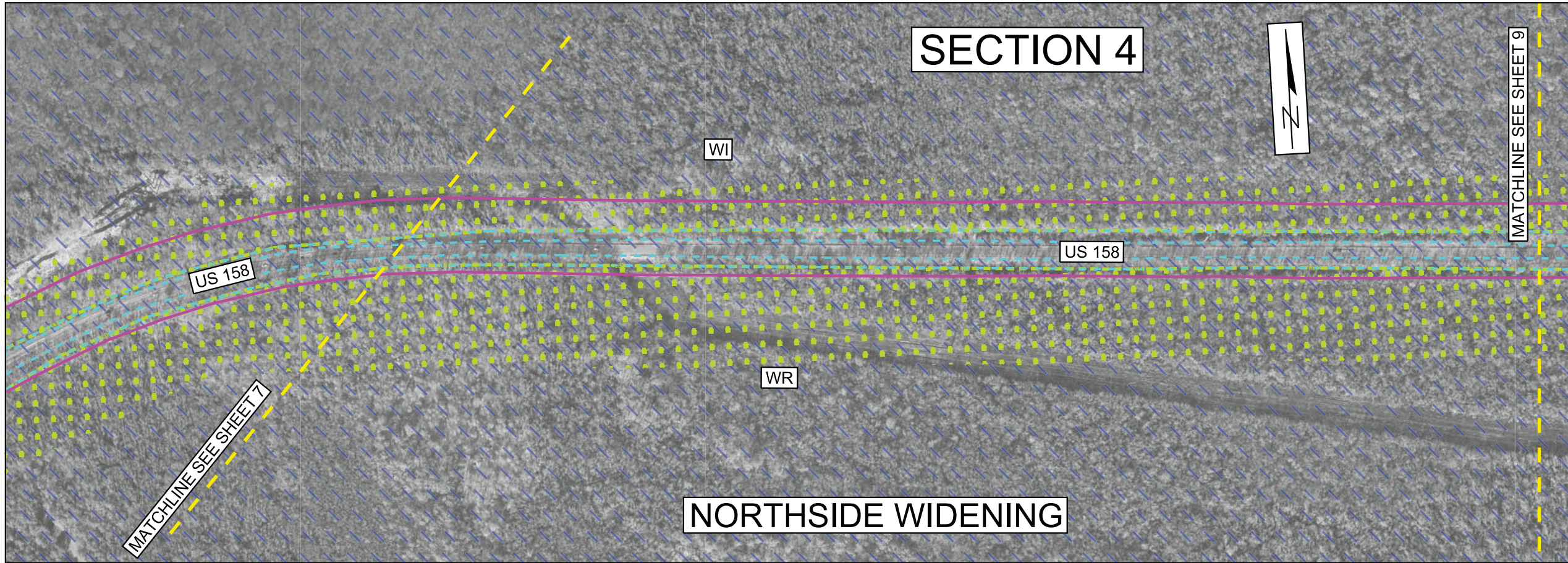
US 158
FROM NC 34 AT BELCROSS
TO NC 168 AT BARCO
CAMDEN AND
CURRITUCK COUNTIES
TIP PROJECT R-2574

LEGEND

- NORTHSIDE WIDENING
- SOUTHSIDE WIDENING
- ADJACENT PROJECT (NOT A PART OF THIS STUDY)
- DELINEATED WETLANDS
- DELINEATED STREAMS OR OPEN WATER
- 100-YEAR FLOODPLAIN
- HISTORIC PROPERTY (NATIONAL REGISTER ELIGIBLE)

0 FEET 400





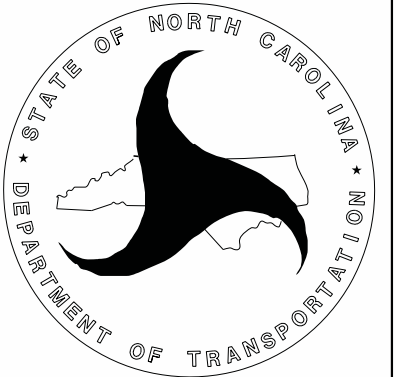
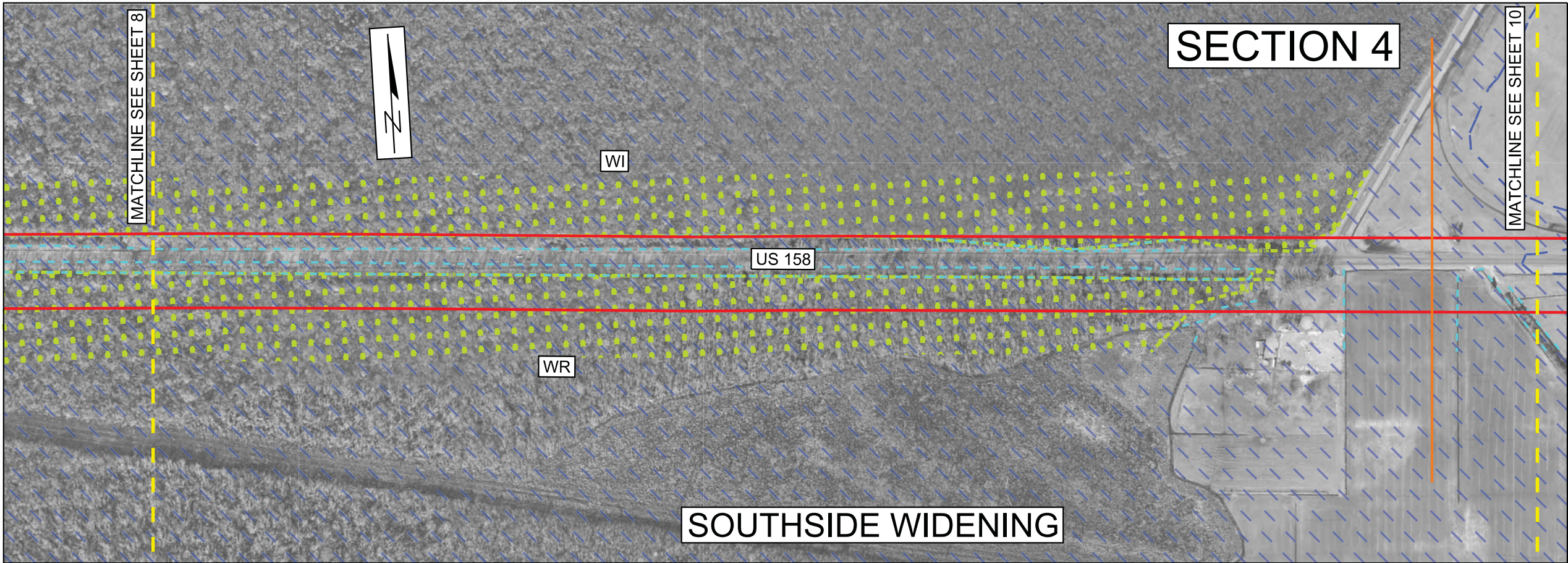
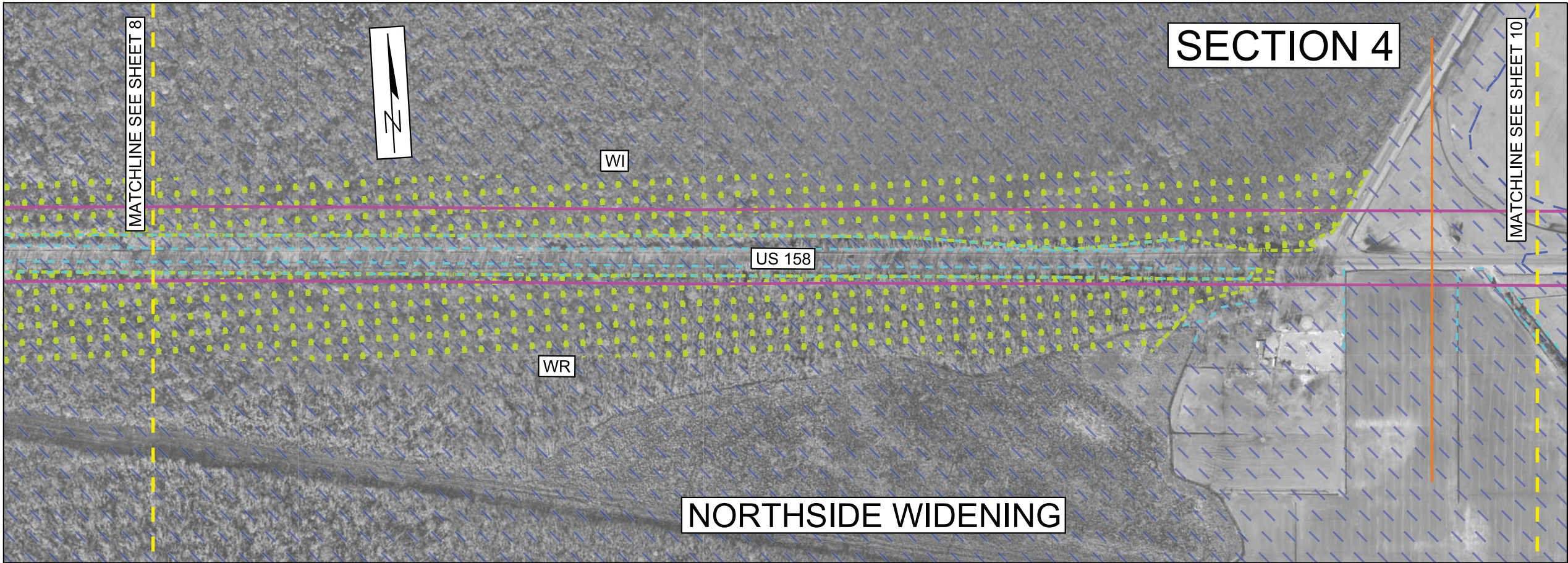
NORTH CAROLINA
DEPARTMENT OF TRANSPORTATION
DIVISION OF HIGHWAYS
PROJECT DEVELOPMENT
AND
ENVIRONMENTAL ANALYSIS
UNIT

US 158
FROM NC 34 AT BELCROSS
TO NC 168 AT BARCO
CAMDEN AND
CURRITUCK COUNTIES
TIP PROJECT R-2574

LEGEND

- NORTHSIDE WIDENING
- SOUTHSIDE WIDENING
- - - ADJACENT PROJECT (NOT A PART OF THIS STUDY)
- ⬭ DELINEATED WETLANDS
- ⬭ DELINEATED STREAMS OR OPEN WATER
- ⬭ 100-YEAR FLOODPLAIN
- HISTORIC PROPERTY (NATIONAL REGISTER ELIGIBLE)

0 FEET 400

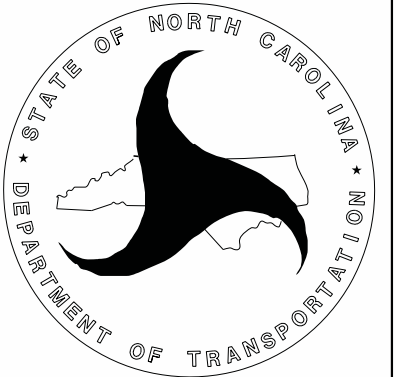
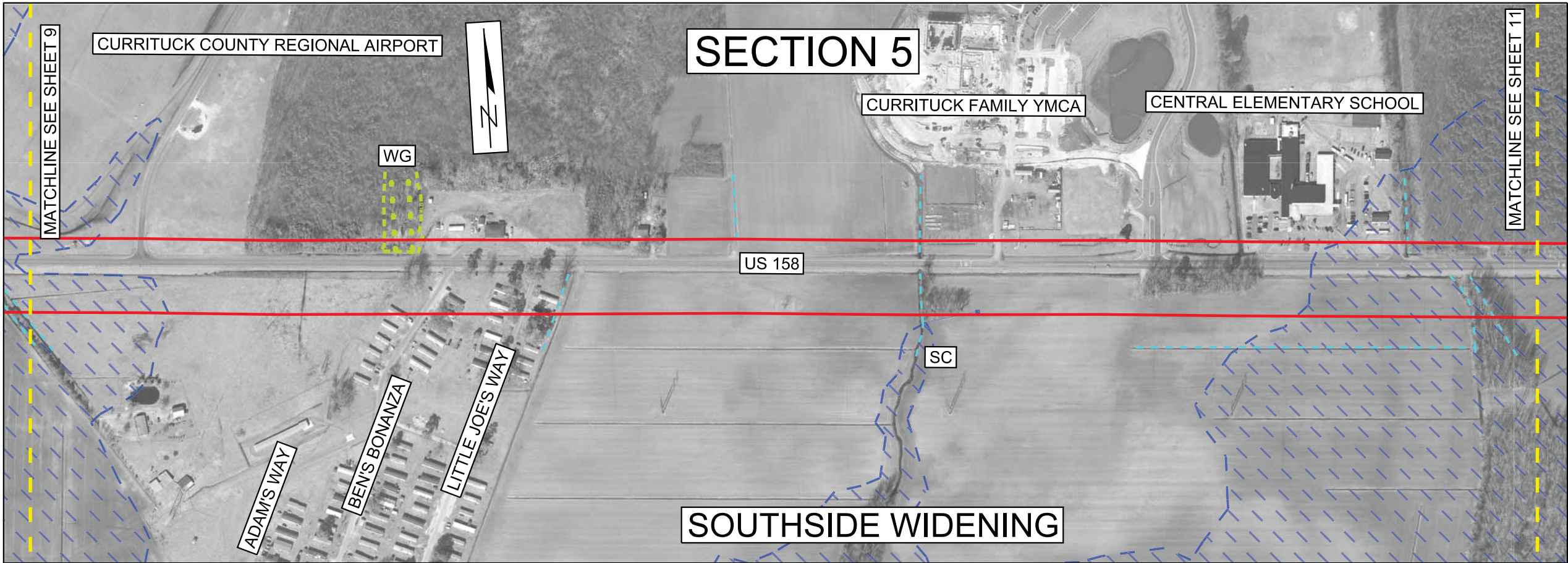
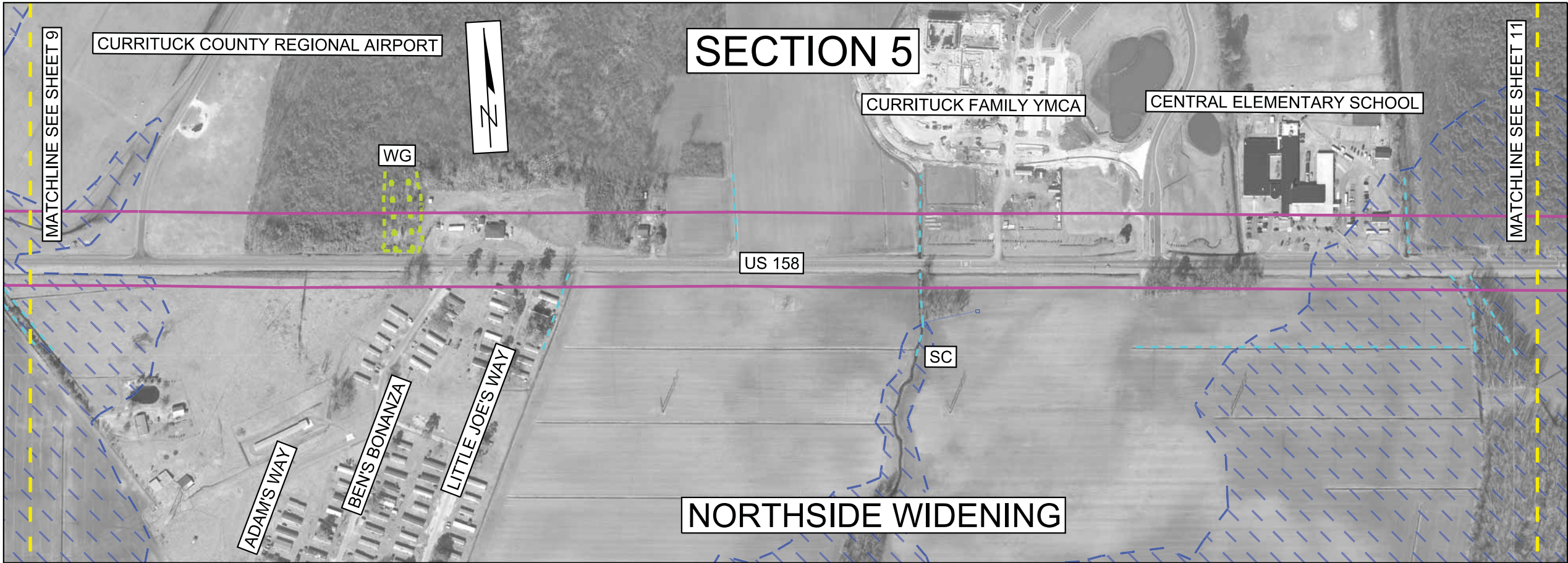


NORTH CAROLINA
DEPARTMENT OF TRANSPORTATION
DIVISION OF HIGHWAYS
PROJECT DEVELOPMENT
AND
ENVIRONMENTAL ANALYSIS
UNIT

US 158
FROM NC 34 AT BELCROSS
TO NC 168 AT BARCO
CAMDEN AND
CURRITUCK COUNTIES
TIP PROJECT R-2574

- LEGEND**
- NORTHSIDE WIDENING
 - SOUTHSIDE WIDENING
 - - - ADJACENT PROJECT (NOT A PART OF THIS STUDY)
 - DELINEATED WETLANDS
 - - - DELINEATED STREAMS OR OPEN WATER
 - 100-YEAR FLOODPLAIN
 - HISTORIC PROPERTY (NATIONAL REGISTER ELIGIBLE)

0 FEET 400

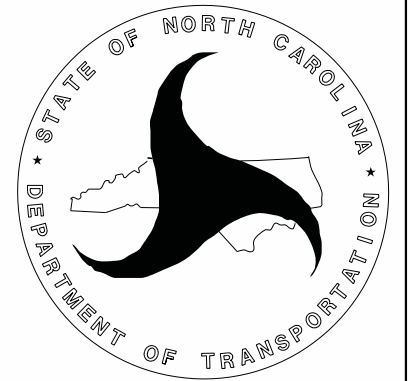


NORTH CAROLINA
DEPARTMENT OF TRANSPORTATION
DIVISION OF HIGHWAYS
PROJECT DEVELOPMENT
AND
ENVIRONMENTAL ANALYSIS
UNIT

US 158
FROM NC 34 AT BELCROSS
TO NC 168 AT BARCO
CAMDEN AND
CURRITUCK COUNTIES
TIP PROJECT R-2574

- LEGEND**
- NORTHSIDE WIDENING
 - SOUTHSIDE WIDENING
 - - - ADJACENT PROJECT (NOT A PART OF THIS STUDY)
 - DELINEATED WETLANDS
 - - - DELINEATED STREAMS OR OPEN WATER
 - 100-YEAR FLOODPLAIN
 - HISTORIC PROPERTY (NATIONAL REGISTER ELIGIBLE)

0 FEET 400

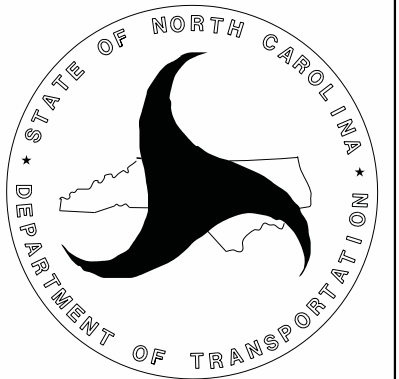
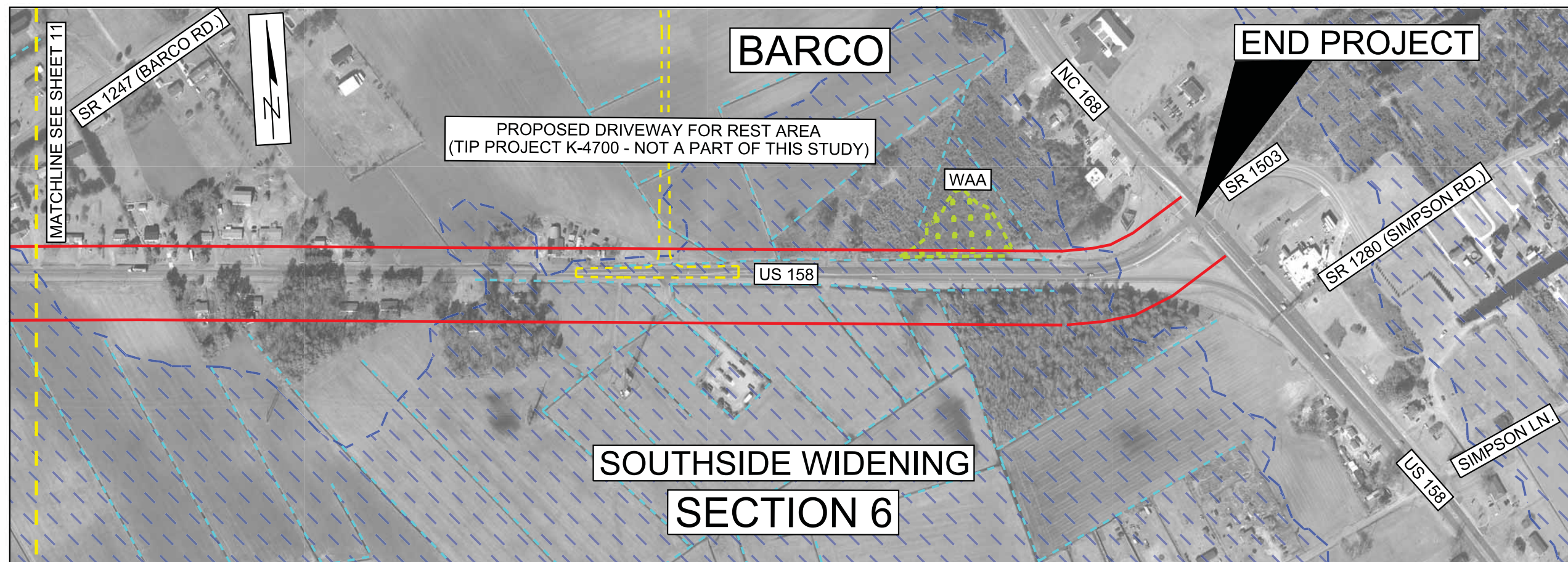
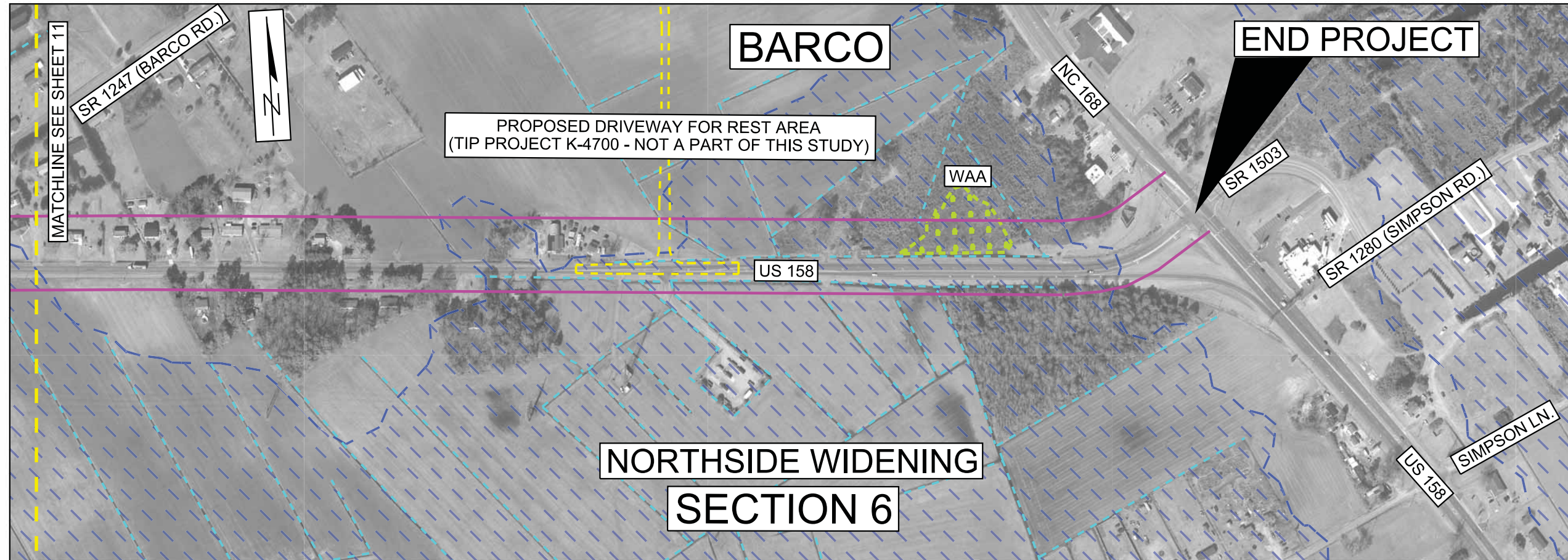


NORTH CAROLINA
DEPARTMENT OF TRANSPORTATION
DIVISION OF HIGHWAYS
PROJECT DEVELOPMENT
AND
ENVIRONMENTAL ANALYSIS
UNIT

US 158
FROM NC 34 AT BELCROSS
TO NC 168 AT BARCO
CAMDEN AND
CURRITUCK COUNTIES
TIP PROJECT R-2574

- LEGEND**
- NORTHSIDE WIDENING
 - SOUTHSIDE WIDENING
 - ADJACENT PROJECT (NOT A PART OF THIS STUDY)
 - DELINEATED WETLANDS
 - DELINEATED STREAMS OR OPEN WATER
 - 100-YEAR FLOODPLAIN
 - HISTORIC PROPERTY (NATIONAL REGISTER ELIGIBLE)





NORTH CAROLINA
DEPARTMENT OF TRANSPORTATION
DIVISION OF HIGHWAYS
PROJECT DEVELOPMENT
AND
ENVIRONMENTAL ANALYSIS
UNIT

US 158
FROM NC 34 AT BELCROSS
TO NC 168 AT BARCO
CAMDEN AND
CURRITUCK COUNTIES
TIP PROJECT R-2574

LEGEND

- NORTHSIDE WIDENING
- SOUTHSIDE WIDENING
- - - ADJACENT PROJECT (NOT A PART OF THIS STUDY)
- ▨ DELINEATED WETLANDS
- - - DELINEATED STREAMS OR OPEN WATER
- ▨ 100-YEAR FLOODPLAIN
- ▨ HISTORIC PROPERTY (NATIONAL REGISTER ELIGIBLE)

0 FEET 400

SHEET 12 OF 12
FIGURE 2