

ENVIRONMENTAL FEATURES MAPS ONLY

FEASIBILITY STUDY

US-74 UPGRADE TO INTERSTATE STANDARDS from EAST OF HAMLET to EAST OF MAXTON RICHMOND, SCOTLAND, & ROBESON COUNTIES

**Divisions 6 & 8
FS-1508A**

Prepared For:



**Feasibility Studies Unit
Division of Planning and Programming
North Carolina Department of Transportation**

DocuSigned by:
David E. Keiser
9D9B57D2817B4E2...

David Z. Keiser, P.E.
Project Manager
CDM Smith

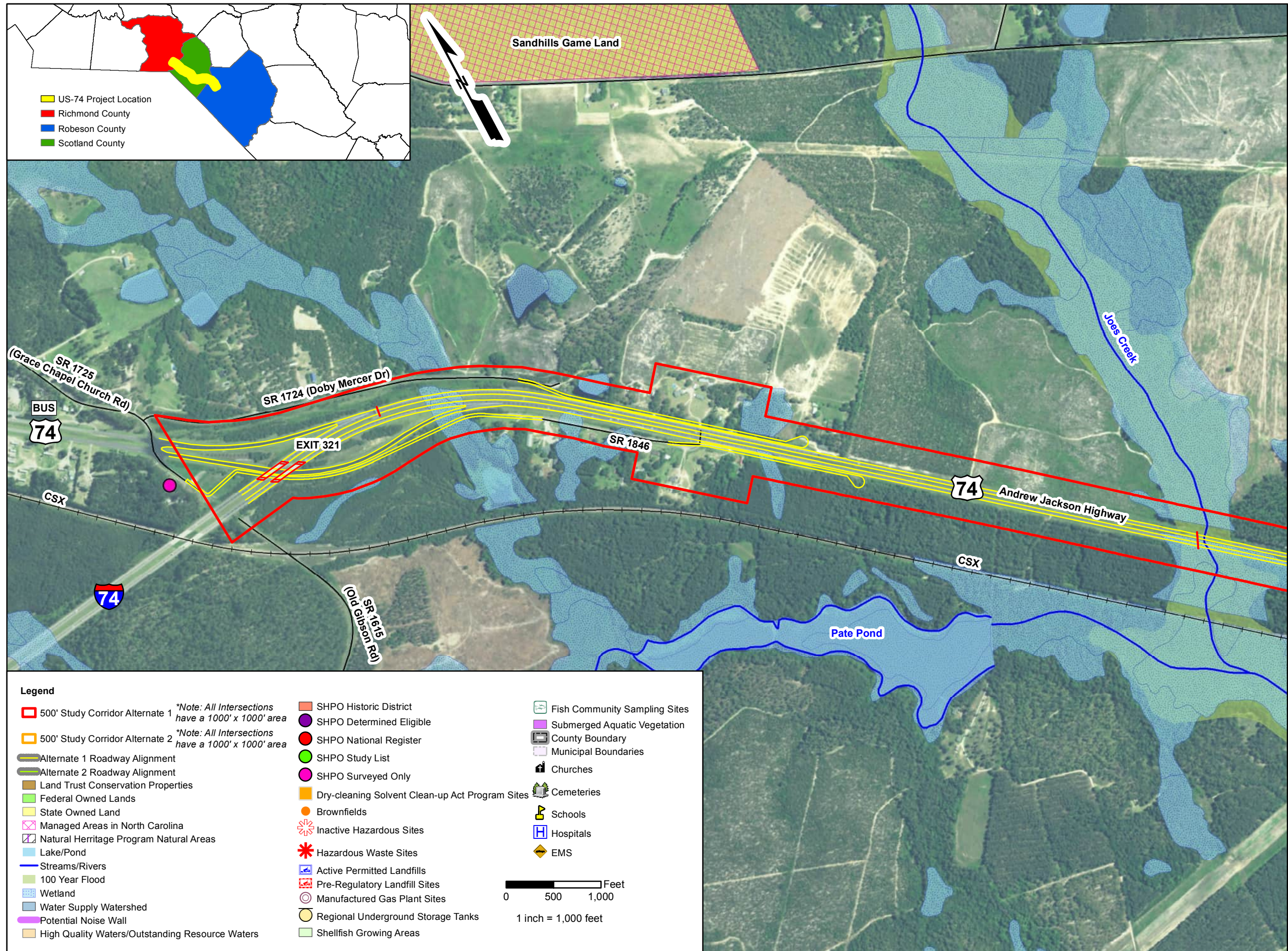
Documentation Prepared By:
CDM Smith
DocuSigned by:
Derrick W. Lewis
9ED3BDDA931B400...

Derrick W. Lewis, P.E.
Feasibility Studies Unit Head
Feasibility Studies Unit

DocuSigned by:
Sonya A. Tankersley
E3C108C933CA414...

Sonya A. Tankersley, P.E.
Feasibility Studies Engineer
Feasibility Studies Unit

October 2017



NORTH CAROLINA DEPARTMENT
OF TRANSPORTATION
DIVISION OF PLANNING
AND PROGRAMMING

FEASIBILITY STUDIES UNIT

FIGURE 9.1
ALTERNATE 1 & 2
ENVIRONMENTAL
FEATURES MAP
US 74 UPGRADE TO INTERSTATE
STANDARDS
RICHMOND, SCOTLAND,
ROBESON COUNTIES

County: **RICHMOND,
SCOTLAND, ROBESON**

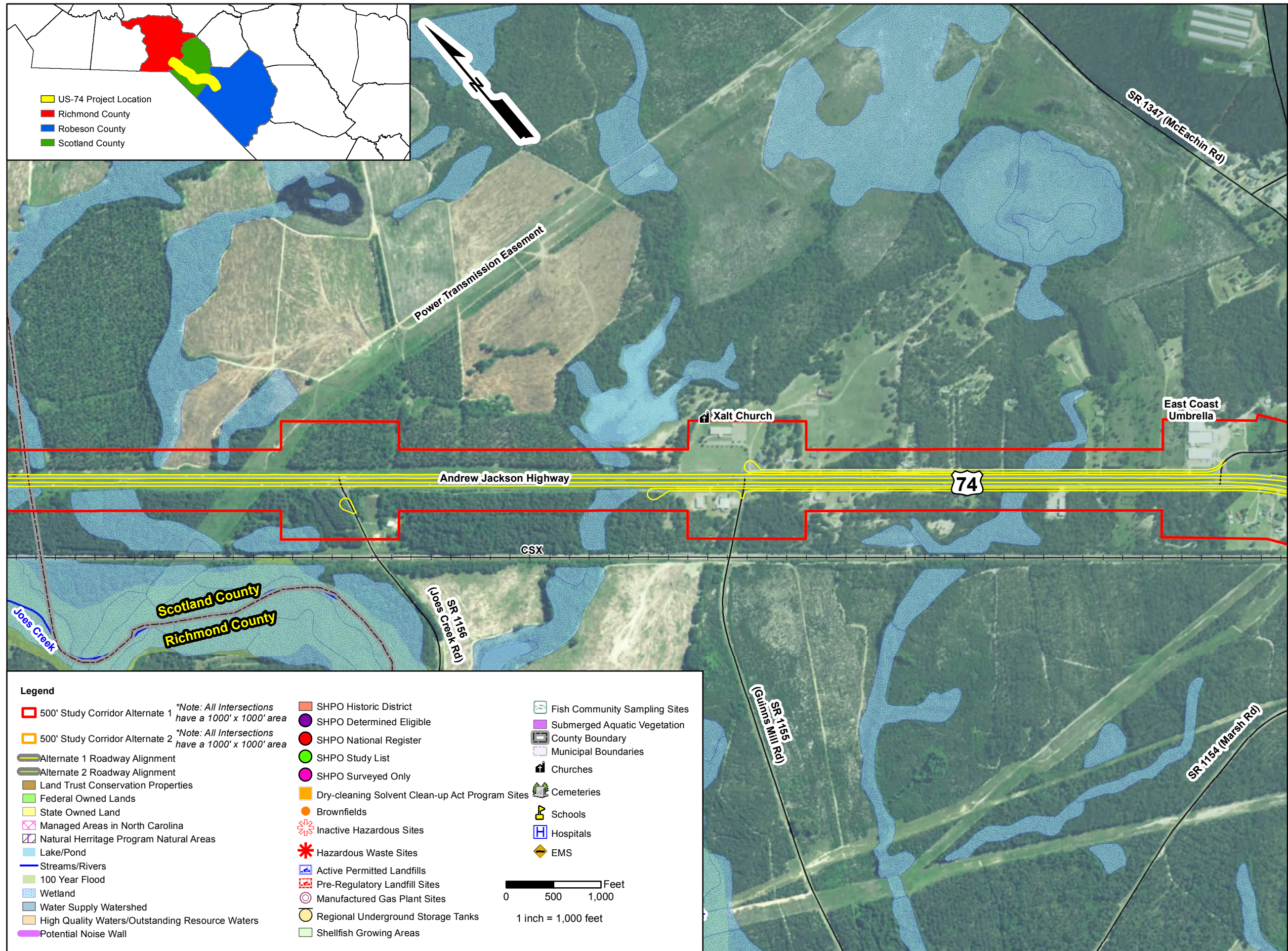
Div:
6 AND 8

TIP#
FS-1508A

JUNE 2017

Data Sources: **NCDOT,
NC OneMap, NC FRIS,
NC SHPO, NCDENR,
USFWS, USGS**

PAGE: **1 OF 12**



NORTH CAROLINA DEPARTMENT
OF TRANSPORTATION
DIVISION OF PLANNING
AND PROGRAMMING

FEASIBILITY STUDIES UNIT

FIGURE 9.2
ALTERNATE 1 & 2
ENVIRONMENTAL
FEATURES MAP

US 74 UPGRADE TO INTERSTATE
STANDARDS
RICHMOND, SCOTLAND,
ROBESON COUNTIES

County: **RICHMOND,
SCOTLAND, ROBESON**

Div: 6 AND 8	TIP# FS-1508A
------------------------	-------------------------

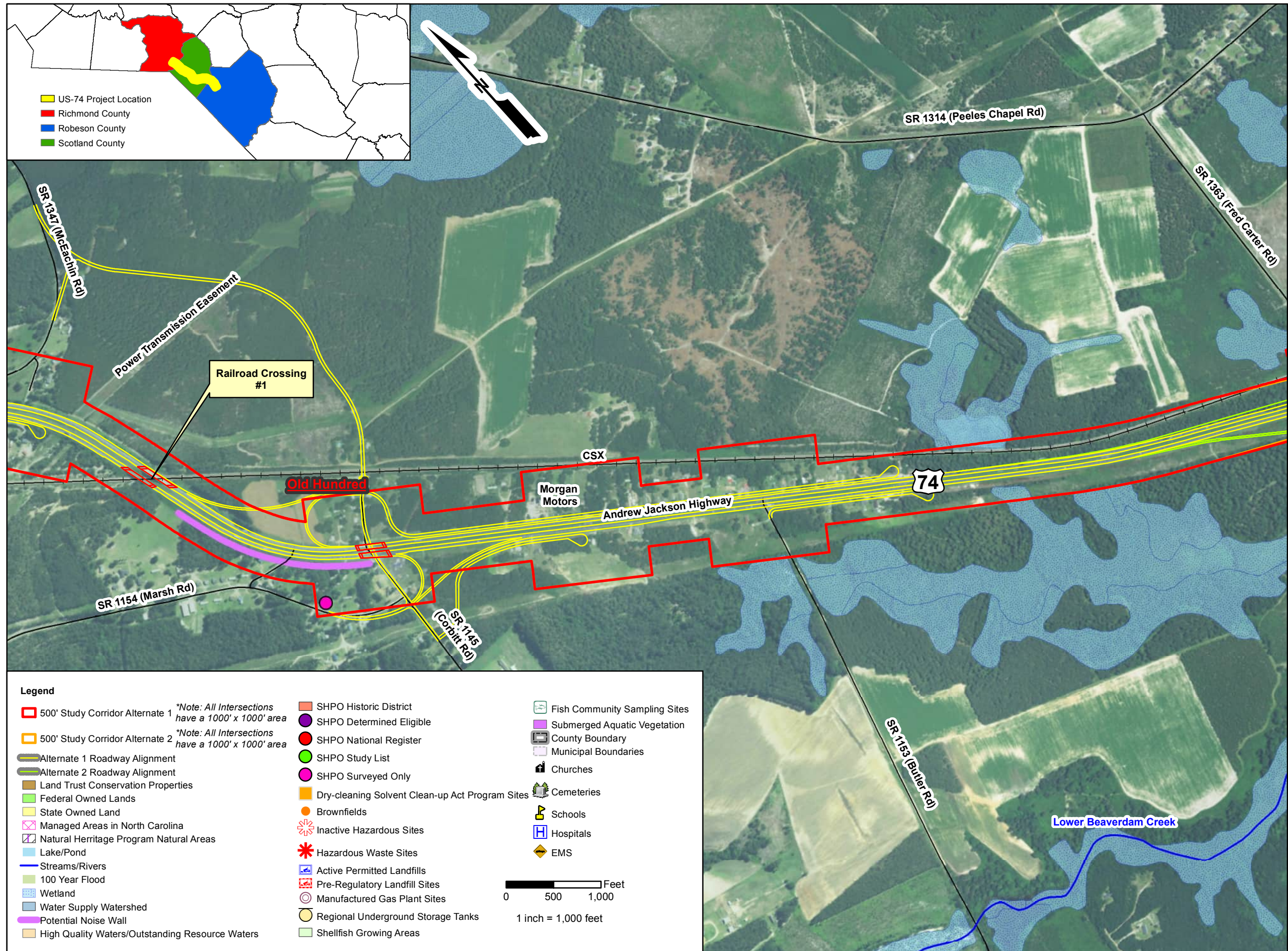
JUNE 2017

**Data Sources: NCDOT,
NC OneMap, NC FRIS,
NC SHPO, NCDENR,
USFWS, USGS**

PAGE: 2 OF 12

Legend

- | | | |
|--|---|---|
| <ul style="list-style-type: none">500' Study Corridor Alternate 1500' Study Corridor Alternate 2Alternate 1 Roadway AlignmentAlternate 2 Roadway AlignmentLand Trust Conservation PropertiesFederal Owned LandsState Owned LandManaged Areas in North CarolinaNatural Heritage Program Natural AreasLake/PondStreams/Rivers100 Year FloodWetlandWater Supply WatershedHigh Quality Waters/Outstanding Resource WatersPotential Noise Wall | <ul style="list-style-type: none">SHPO Historic DistrictSHPO Determined EligibleSHPO National RegisterSHPO Study ListSHPO Surveyed OnlyDry-cleaning Solvent Clean-up Act Program SitesBrownfieldsInactive Hazardous SitesHazardous Waste SitesActive Permitted LandfillsPre-Regulatory Landfill SitesManufactured Gas Plant SitesRegional Underground Storage TanksShellfish Growing Areas | <ul style="list-style-type: none">Fish Community Sampling SitesSubmerged Aquatic VegetationCounty BoundaryMunicipal BoundariesChurchesCemeteriesSchoolsHospitalsEMS |
|--|---|---|
- *Note: All Intersections have a 1000' x 1000' area*
**Note: All Intersections have a 1000' x 1000' area*
- 0 500 1,000 Feet
1 inch = 1,000 feet



Legend

500' Study Corridor Alternate 1

500' Study Corridor Alternate 2

Alternate 1 Roadway Alignment

Alternate 2 Roadway Alignment

Land Trust Conservation Properties

Federal Owned Lands

State Owned Land

Managed Areas in North Carolina

Natural Heritage Program Natural Areas

Lake/Pond

Streams/Rivers

100 Year Flood

Wetland

Water Supply Watershed

Potential Noise Wall

High Quality Waters/Outstanding Resource Waters

*Note: All Intersections have a 1000' x 1000' area

*Note: All Intersections have a 1000' x 1000' area

SHPO Historic District

SHPO Determined Eligible

SHPO National Register

SHPO Study List

SHPO Surveyed Only

Dry-cleaning Solvent Clean-up Act Program Sites

Brownfields

Inactive Hazardous Sites

Hazardous Waste Sites

Active Permitted Landfills

Pre-Regulatory Landfill Sites

Manufactured Gas Plant Sites

Regional Underground Storage Tanks

Shellfish Growing Areas

Fish Community Sampling Sites

Submerged Aquatic Vegetation

County Boundary

Municipal Boundaries

Churches

Cemeteries

Schools

Hospitals

EMS

05001,000

Feet

1 inch = 1,000 feet

STATE OF NORTH CAROLINA

DEPARTMENT OF TRANSPORTATION

NORTH CAROLINA DEPARTMENT
OF TRANSPORTATION
DIVISION OF PLANNING
AND PROGRAMMING

FEASIBILITY STUDIES UNIT

FIGURE 9.3

ALTERNATE 1 & 2

ENVIRONMENTAL

FEATURES MAP

US 74 UPGRADE TO INTERSTATE
STANDARDS
RICHMOND, SCOTLAND,
ROBESON COUNTIES

County: RICHMOND,
SCOTLAND, ROBESON

Div:
6 AND 8

TIP#
FS-1508A

JUNE 2017

Data Sources: NCDOT,
NC OneMap, NC FRIS,
NC SHPO, NCDENR,
USFWS, USGS

PAGE: 3 OF 12

A-7

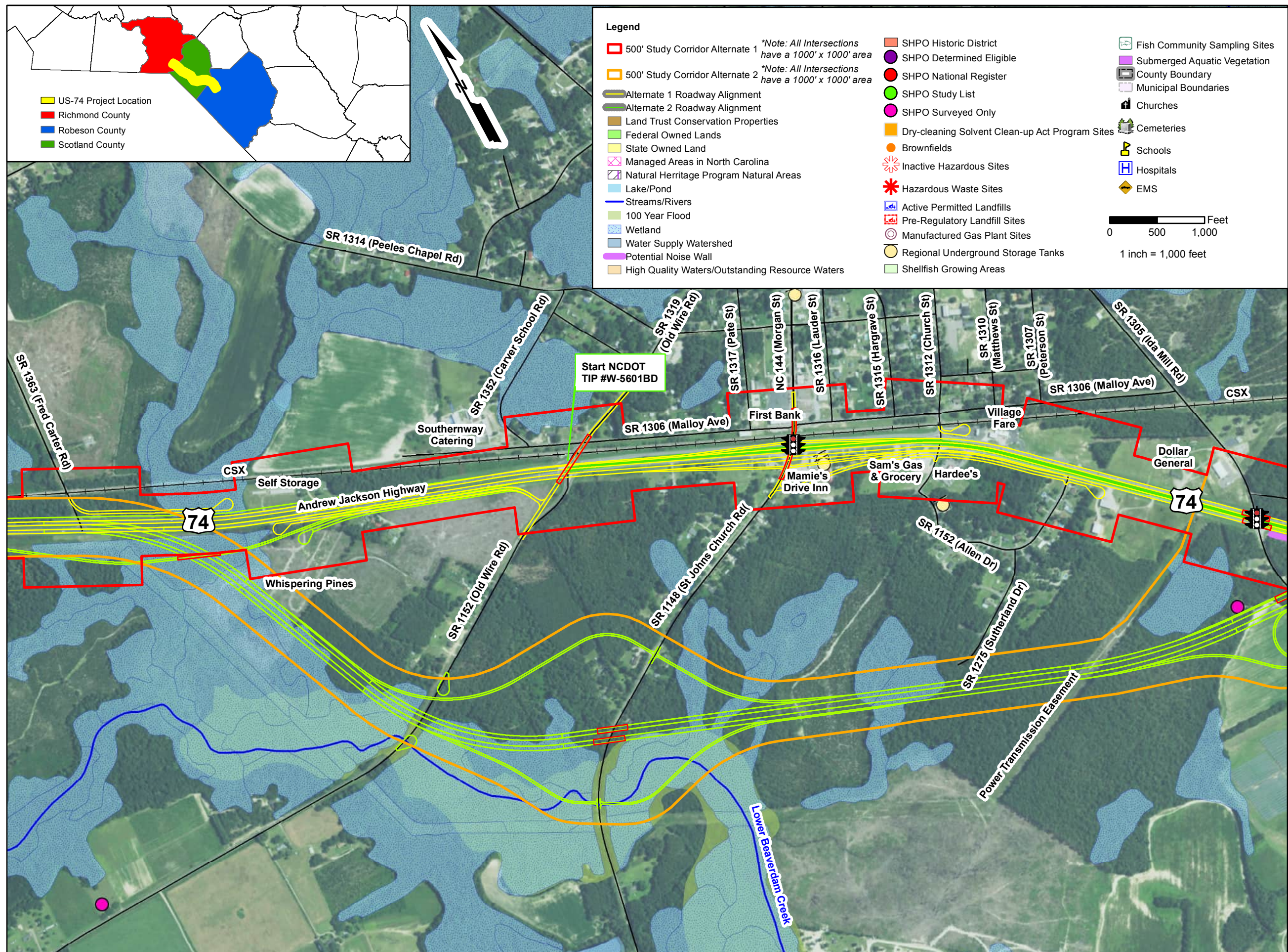


FIGURE 9.4
ALTERNATE 1 & 2
ENVIRONMENTAL
FEATURES MAP
US 74 UPGRADE TO INTERST
STANDARDS
RICHMOND, SCOTLAND,
ROBESON COUNTIES

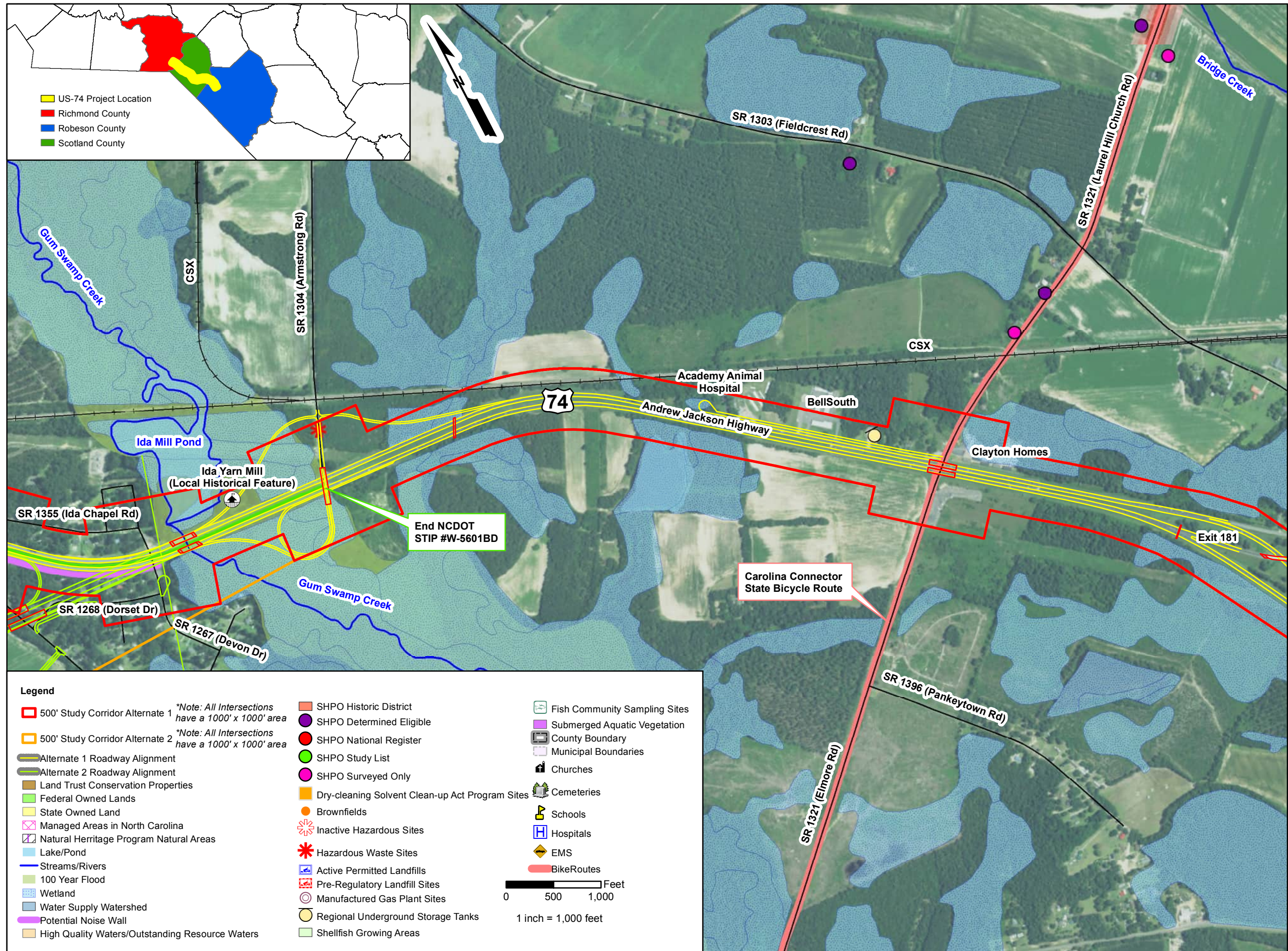
County: **RICHMOND,
SCOTLAND, ROBESON**

Div: 6 AND 8	TIP# FS-1508A
------------------------	-------------------------

JUNE 2017

**Data Sources: NCDOT,
NC OneMap, NC FRIS,
NC SHPO, NCDENR,
USFWS, USGS**

PAGE: 4 OF 12





**NORTH CAROLINA DEPARTMENT
OF TRANSPORTATION**

**DIVISION OF PLANNING
AND PROGRAMMING**

FEASIBILITY STUDIES UNIT

FIGURE 9.5

ALTERNATE 1 & 2

ENVIRONMENTAL

FEATURES MAP

**US 74 UPGRADE TO INTERSTATE
STANDARDS**

**RICHMOND, SCOTLAND,
ROBESON COUNTIES**

County: RICHMOND, SCOTLAND, ROBESON	
Div: 6 AND 8	TIP# FS-1508A
JUNE 2017	
Data Sources: NCDOT, NC OneMap, NC FRIS, NC SHPO, NCDENR, USFWS, USGS	
PAGE: 5 OF 12	