

10/28/24

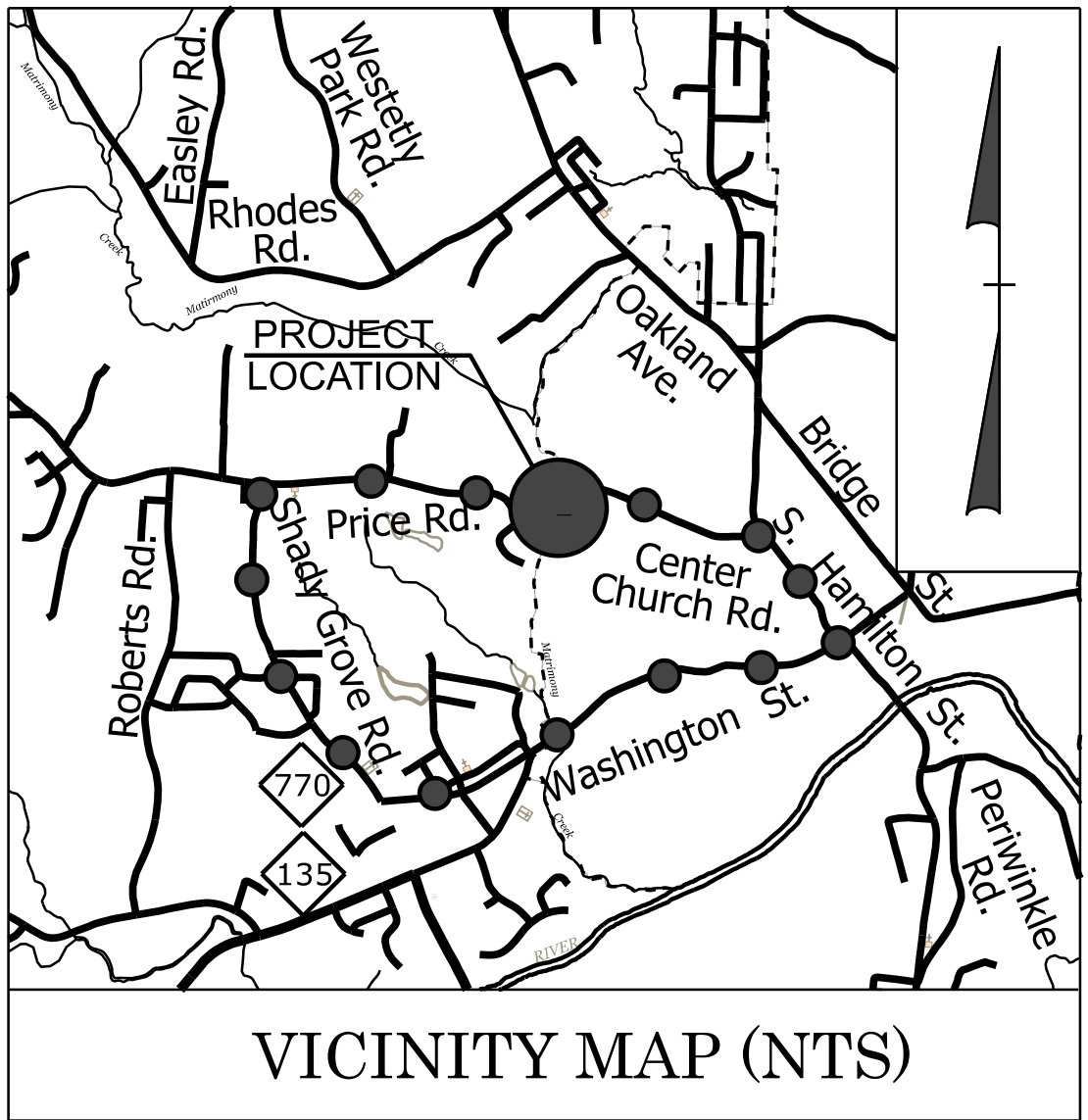
TIP PROJECT: HB-0035

CONTRACT:

STATE OF NORTH CAROLINA
DIVISION OF HIGHWAYS

T.I.P. NO.	SHEET NO.
HB-0035	UO-1

NOTE:
ALL UTILITY WORK SHOWN ON THIS SHEET WILL BE DONE BY OTHERS. NO PAYMENT WILL BE MADE TO THE CONTRACTOR FOR UTILITY WORK SHOWN ON THIS SHEET.

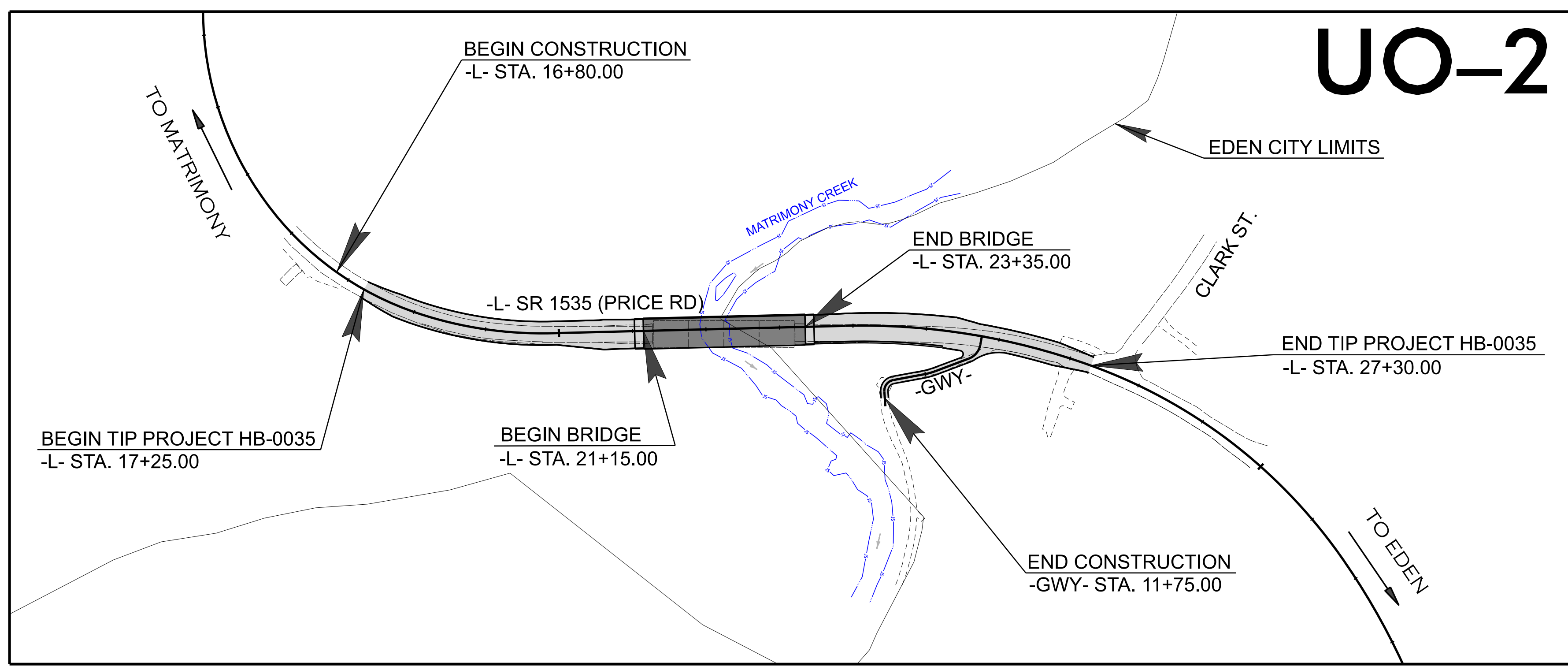
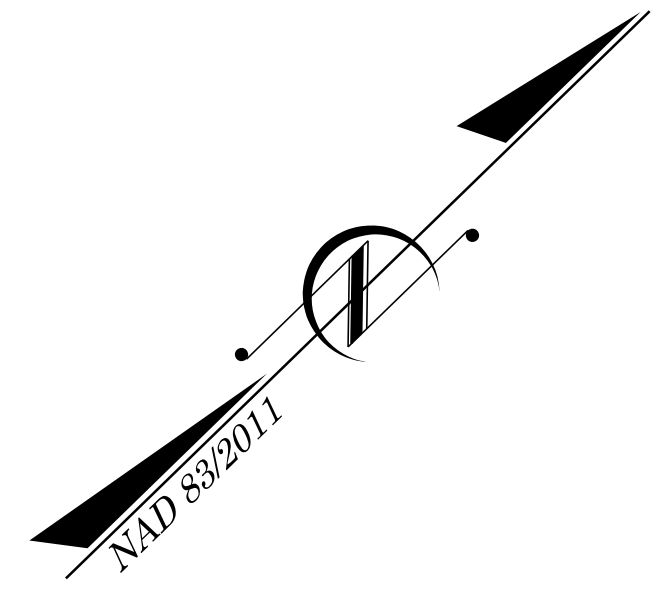


● OFFSITE DETOUR ROUTE

**UTILITIES BY OTHERS PLANS
ROCKINGHAM COUNTY**

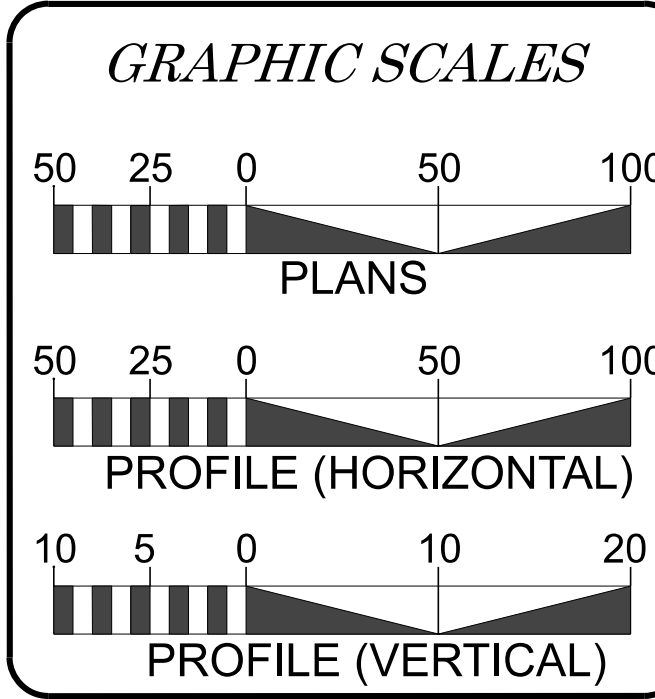
LOCATION: REPLACE BRIDGE #780177 ON SR 1535 (PRICE RD.) OVER MATRIMONY CREEK IN EDEN

TYPE OF WORK: POWER & COMMUNICATIONS



UO-2

DOCUMENT NOT CONSIDERED FINAL
UNLESS ALL SIGNATURES COMPLETED



INDEX OF SHEETS

SHEET NO.:	DESCRIPTION:
UO-1	TITLE SHEET
UO-2	PLAN SHEET

UTILITY OWNERS WITH CONFLICTS

(A) POWER - DUKE ENERGY
(B) COMMUNICATIONS - BRIGHTSPEED

PREPARED IN THE OFFICE OF

TELICS
119 BROOKSTOWN AVE.
SUITE 305
WINSTON SALEM, NC 27101
(336) 705 - 8844

CORY WOOD CONSULTANT CONTACT #1

**DIVISION OF HIGHWAYS
UTILITIES UNIT**
1555 MAIL SERVICES CENTER
RALEIGH NC 27699-1555
PHONE (919) 707-6690
FAX (919) 250-4151

ALI KOUCHEKI UTILITIES REGIONAL ENGINEER
DOUG JOYNER UTILITIES ENGINEER
MARK COLE UTILITIES AREA COORDINATOR
CORY WOOD UTILITIES COORDINATOR

02/02/22

UTILITIES BY OTHERS

HB-0035

00-2

NORTH CAROLINA
DEPARTMENT OF TRANSPORTATION
ROCKINGHAM COUNTY

UTILITY DESIGN UNIT

UTILITY CONSTRUCTION
PLANS ONLY

ALL PROPOSED UTILITY
WORK SHOWN ON THIS
SHEET WILL BE DONE
BY OTHERS. NO PAYMENT
WILL BE MADE TO THE
CONTRACTOR FOR
UTILITY WORK SHOWN ON
THIS SHEET.

DESIGNED BY:

DRAWN BY:

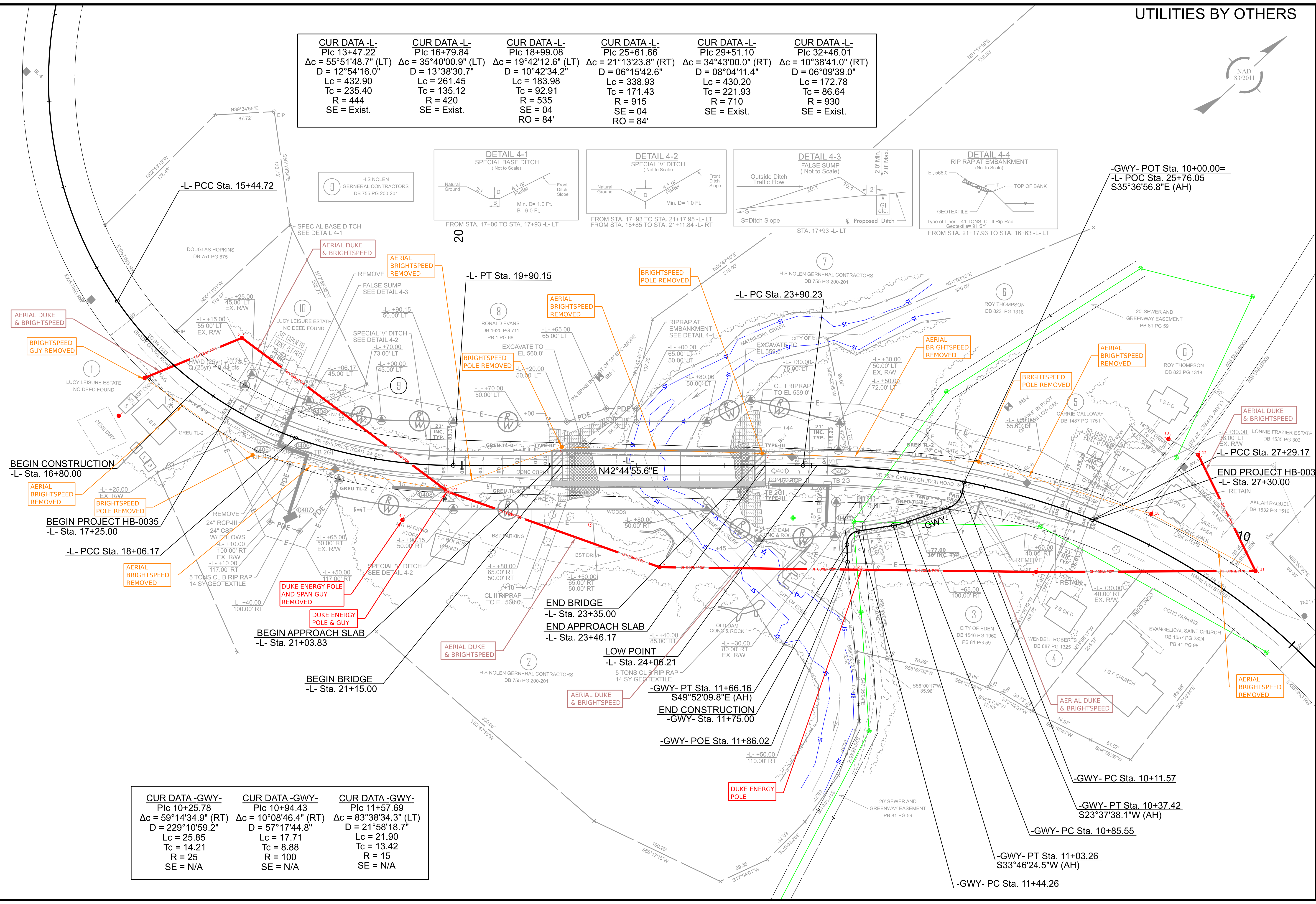
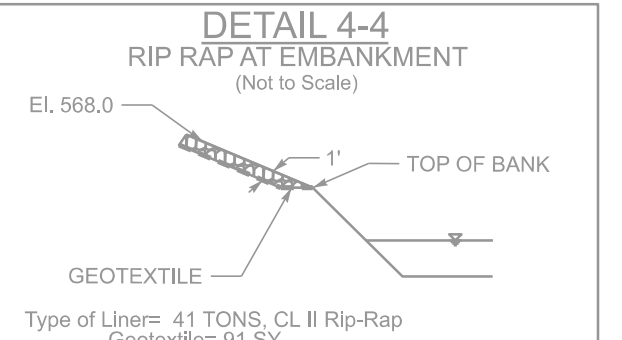
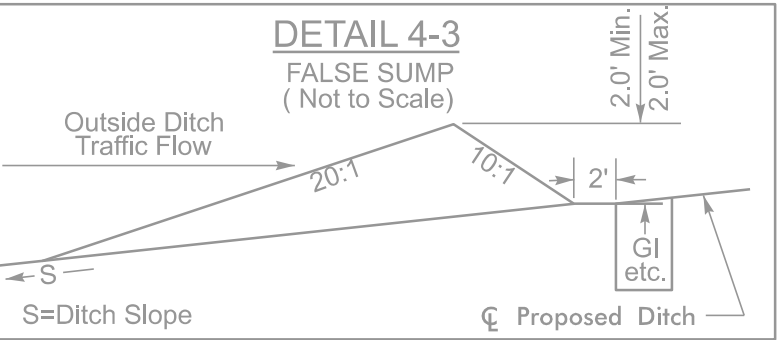
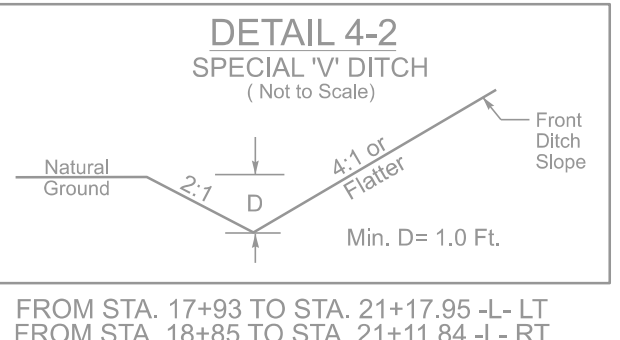
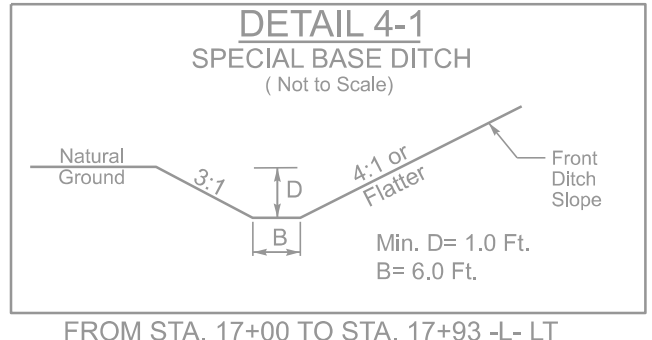
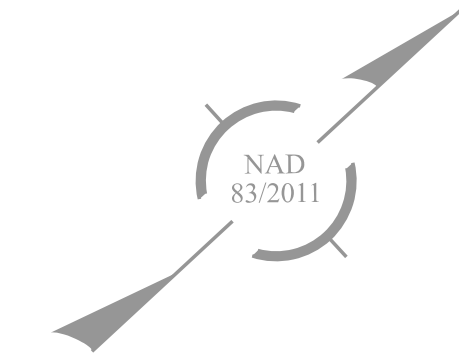
CHECKED BY:

APPROVED BY:

REVISED:

119 BROOKTOWN AVE.
SUITE 303
WINSTON SALEM, NC 27101
PHONE (336)705-8844

CUR DATA -L- Plc 13+47.22 Δc = 55°51'48.7" (LT) D = 12°54'16.0" Lc = 432.90 Tc = 235.40 R = 444 SE = Exist.	CUR DATA -L- Plc 16+79.84 Δc = 35°40'00.9" (LT) D = 13°38'30.7" Lc = 261.45 Tc = 135.12 R = 420 SE = Exist.	CUR DATA -L- Plc 18+99.08 Δc = 19°42'12.6" (LT) D = 10°42'34.2" Lc = 183.98 Tc = 92.91 R = 535 SE = 04 RO = 84'	CUR DATA -L- Plc 25+61.66 Δc = 21°13'23.8" (RT) D = 06°15'42.6" Lc = 338.93 Tc = 171.43 R = 915 SE = 04 RO = 84'	CUR DATA -L- Plc 29+51.10 Δc = 34°43'00.0" (RT) D = 08°04'11.4" Lc = 430.20 Tc = 221.93 R = 710 SE = Exist.	CUR DATA -L- Plc 32+46.01 Δc = 10°38'41.0" (RT) D = 06°09'39.0" Lc = 172.78 Tc = 86.64 R = 930 SE = Exist.
---	---	--	---	---	--



CUR DATA -GWY- Plc 10+25.78 Δc = 59°14'34.9" (RT) D = 229°10'59.2" Lc = 25.85 Tc = 14.21 R = 25 SE = N/A	CUR DATA -GWY- Plc 10+94.43 Δc = 10°08'46.4" (RT) D = 57°17'44.8" Lc = 17.71 Tc = 8.88 R = 100 SE = N/A	CUR DATA -GWY- Plc 11+57.69 Δc = 83°38'34.3" (LT) D = 21°58'18.7" Lc = 21.90 Tc = 13.42 R = 15 SE = N/A
--	---	---

REVISIONS