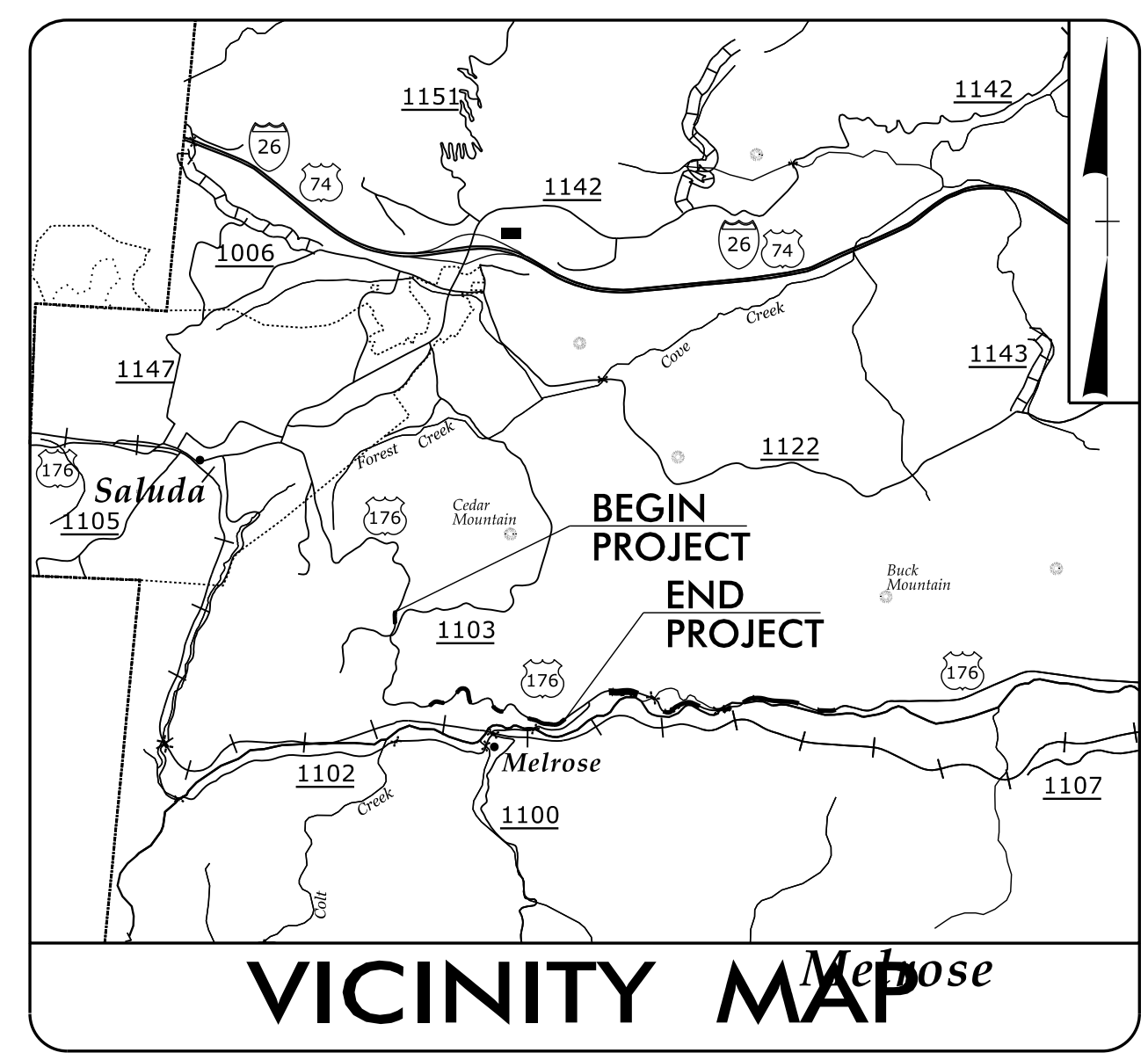


09/08/99

**PROJECT: W03293**



STATE OF NORTH CAROLINA  
DIVISION OF HIGHWAYS

**UTILITIES BY OTHERS PLANS  
POLK COUNTY**

**LOCATION: US 176**

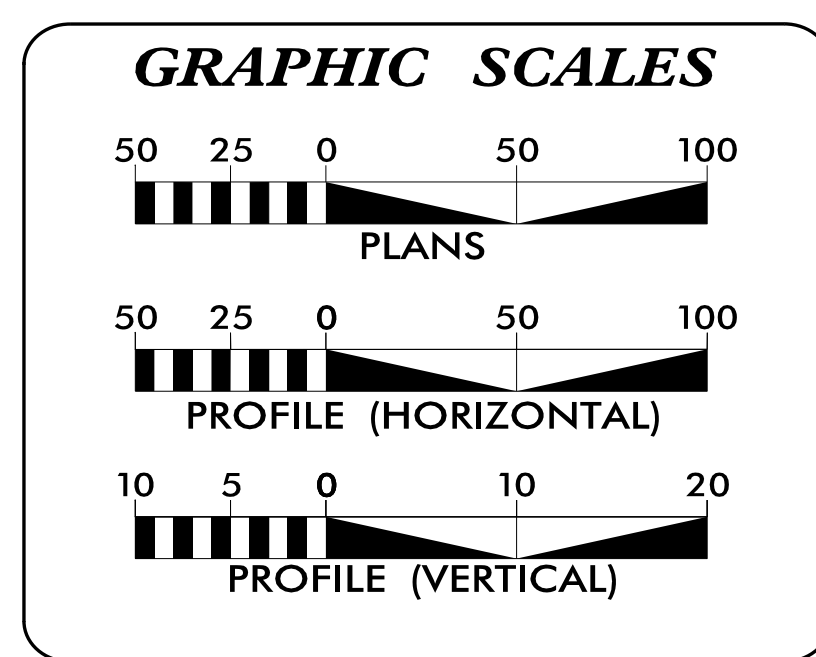
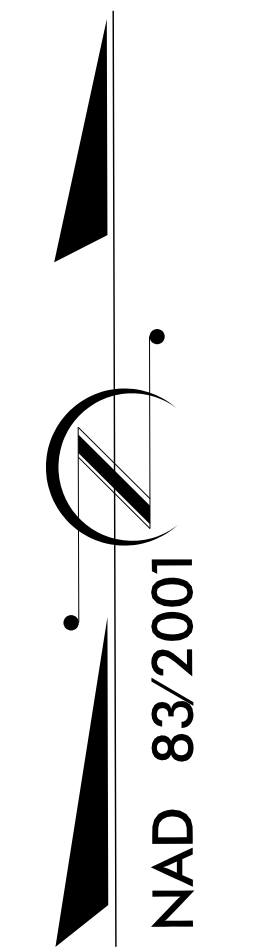
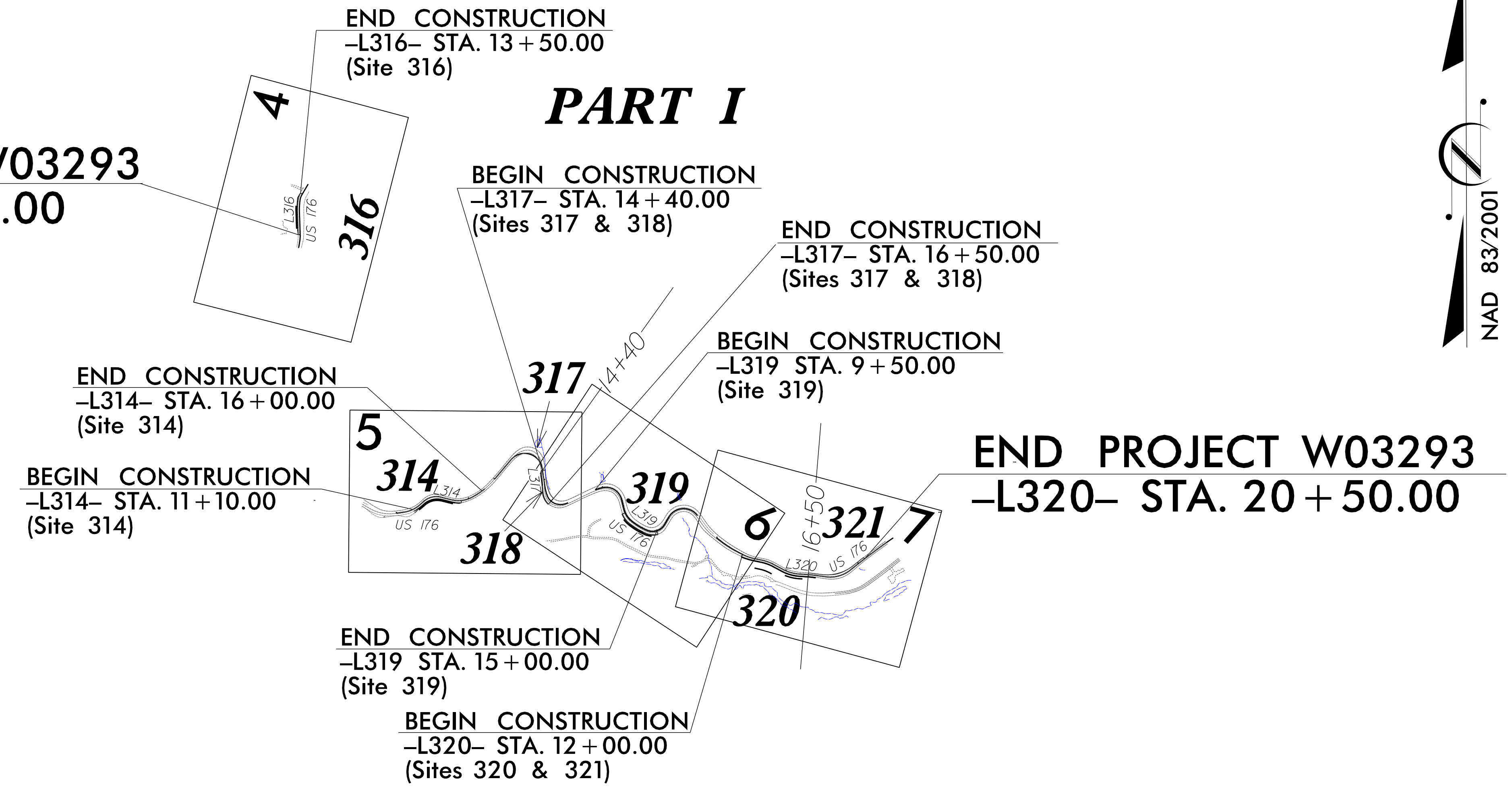
**TYPE OF WORK: DISTRIBUTION POWER & COMMUNICATIONS**

|            |           |
|------------|-----------|
| T.I.P. NO. | SHEET NO. |
| W03293     | UO-1      |

**NOTE:**  
ALL UTILITY WORK SHOWN ON THIS SHEET WILL BE DONE BY OTHERS. NO PAYMENT WILL BE MADE TO THE CONTRACTOR FOR UTILITY WORK SHOWN ON THIS SHEET.

| STATE PROJ. NO. | DESCRIPTION |
|-----------------|-------------|
| 18314.1075023   | 314         |
| 18314.1075025   | 316         |
| 18314.1075026   | 317         |
| 18314.1075027   | 318         |
| 18314.1075028   | 319         |
| 18314.1075029   | 320         |
| 18314.1075030   | 321         |

**BEGIN PROJECT W03293  
-L316- STA. 10 + 85.00**



**INDEX OF SHEETS**

| SHEET NO.:  | DESCRIPTION:    |
|-------------|-----------------|
| UO-1        | TITLE SHEET     |
| UO-2        | SYMBOLGY SHEET  |
| UO-3        | DETAIL SHEET    |
| UO-4 - UO-7 | UBO PLAN SHEETS |

**UTILITY OWNERS WITH CONFLICTS**

(A) POWER - DUKE ENERGY

(B) COMMUNICATIONS - MCNC

(C) COMMUNICATIONS - DUKE FIBER

(D) COMMUNICATIONS - RIVERSTREET

PREPARED IN THE OFFICE OF:

**TELICS**  
1598 WESTBROOK PLAZA DR.  
SUITE 202  
WINSTON-SALEM, NC 27103  
(336) 705-8844

CORY WOOD UTILITY PROJECT MANAGER  
CORY WOOD PROJECT UTILITY COORDINATOR

**DIVISION OF HIGHWAYS  
DIVISION 14**

253 WEBSTER ROAD  
SYLVA, NC 28779

BOB GOLDING DIVISION UTILITY ENGINEER  
ROBERT DYER ASST. DIVISION UTILITY ENGINEER

05/20/24

Note: Not to Scale

# STATE OF NORTH CAROLINA, DIVISION OF HIGHWAYS

## CONVENTIONAL PLAN SHEET SYMBOLS

### BOUNDARIES AND PROPERTY:

|                                       |            |
|---------------------------------------|------------|
| State Line                            | _____      |
| County Line                           | _____      |
| Township Line                         | _____      |
| City Line                             | _____      |
| Reservation Line                      | _____      |
| Property Line                         | _____      |
| Existing Iron Pin (EIP)               | ○          |
| Computed Property Corner              | ×          |
| Existing Concrete Monument (ECM)      | □          |
| Parcel / Sequence Number              | ⑩          |
| Existing Fence Line                   | -x-x-x-    |
| Proposed Woven Wire Fence             | ○          |
| Proposed Chain Link Fence             | □          |
| Proposed Barbed Wire Fence            | ◇          |
| Existing Wetland Boundary             | ---WLB---  |
| Proposed Wetland Boundary             | ---WLB---  |
| Existing Endangered Animal Boundary   | ---EAB---  |
| Existing Endangered Plant Boundary    | ---EPB---  |
| Existing Historic Property Boundary   | ---HPB---  |
| Known Contamination Area: Soil        | ---S---    |
| Potential Contamination Area: Soil    | ---S---    |
| Known Contamination Area: Water       | ---W---    |
| Potential Contamination Area: Water   | ---W---    |
| Contaminated Site: Known or Potential | ☠ ☢        |
| <b>BUILDINGS AND OTHER CULTURE:</b>   |            |
| Gas Pump Vent or U/G Tank Cap         | ○          |
| Sign                                  | ○          |
| Well                                  | ⊕          |
| Small Mine                            | ✕          |
| Foundation                            | □          |
| Area Outline                          | □          |
| Cemetery                              | ⊕          |
| Building                              | □          |
| School                                | □          |
| Church                                | ⊕          |
| Dam                                   | —          |
| <b>HYDROLOGY:</b>                     |            |
| Stream or Body of Water               | _____      |
| Hydro, Pool or Reservoir              | □          |
| Jurisdictional Stream                 | ---JS---   |
| Buffer Zone 1                         | ---BZ 1--- |
| Buffer Zone 2                         | ---BZ 2--- |
| Flow Arrow                            | ←          |
| Disappearing Stream                   | →          |
| Spring                                | ○          |
| Wetland                               | ✕          |
| Proposed Lateral, Tail, Head Ditch    | →          |
| False Sump                            | ◁          |

### RAILROADS:

|  |         |
|--|---------|
| Standard Gauge                                       | _____   |
| RR Signal Milepost                                   | ○       |
| Switch   | □       |
| RR Abandoned   | ---     |
| RR Dismantled  | ---     |
| <b>RIGHT OF WAY &amp; PROJECT CONTROL:</b>           |         |
| Primary Horiz Control Point                          | ○       |
| Primary Horiz and Vert Control Point                 | ●       |
| Secondary Horiz and Vert Control Point               | ◆       |
| Vertical Benchmark                                   | ⊕       |
| Existing Right of Way Monument                       | △       |
| Proposed Right of Way Monument (Rebar and Cap)       | ▲       |
| Proposed Right of Way Monument (Concrete)            | ⊕       |
| Existing Permanent Easement Monument                 | ◇       |
| Proposed Permanent Easement Monument (Rebar and Cap) | ◆       |
| Existing C/A Monument                                | △       |
| Proposed C/A Monument (Rebar and Cap)                | ▲       |
| Proposed C/A Monument (Concrete)                     | ⊕       |
| Existing Right of Way Line                           | —       |
| Proposed Right of Way Line                           | —       |
| Existing Control of Access Line                      | —       |
| Proposed Control of Access Line                      | —       |
| Proposed ROW and CA Line                             | —       |
| Existing Easement Line                               | —E—     |
| Proposed Temporary Construction Easement             | —E—     |
| Proposed Temporary Drainage Easement                 | —TDE—   |
| Proposed Permanent Drainage Easement                 | —PDE—   |
| Proposed Permanent Drainage/Utility Easement         | —DUE—   |
| Proposed Permanent Utility Easement                  | —PUE—   |
| Proposed Temporary Utility Easement                  | —TUE—   |
| Proposed Aerial Utility Easement                     | —AUE—   |
| <b>ROADS AND RELATED FEATURES:</b>                   |         |
| Existing Edge of Pavement                            | ---     |
| Existing Curb  | ---     |
| Proposed Slope Stakes Cut                            | ---C--- |
| Proposed Slope Stakes Fill                           | ---F--- |
| Proposed Curb Ramp                                   | ○       |
| Existing Metal Guardrail                             | —       |
| Proposed Guardrail                                   | —       |
| Existing Cable Guiderail                             | —       |
| Proposed Cable Guiderail                             | —       |
| Equality Symbol                                      | ⊕       |
| Pavement Removal                                     | ⊗       |
| <b>VEGETATION:</b>                                   |         |
| Single Tree  | ✕       |
| Single Shrub   | ⊕       |
| Hedge  | —       |

|  |           |
|--|-----------|
| Woods Line   | _____     |
| Orchard  | ⊕         |
| Vineyard   | □         |
| <b>EXISTING STRUCTURES:</b>  |           |
| MAJOR:   |           |
| Bridge, Tunnel or Box Culvert  | —CONC—    |
| Bridge Wing Wall, Head Wall and End Wall   | —CONC WW— |
| MINOR:   |           |
| Head and End Wall  | —CONC HW— |
| Pipe Culvert   | —         |
| Footbridge   | —         |
| Drainage Box: Catch Basin, DI or JB  | □         |
| Paved Ditch Gutter   | —         |
| Storm Sewer Manhole  | ⊕         |
| Storm Sewer  | —S—       |
| <b>UTILITIES:</b>  |           |
| * SUE - Subsurface Utility Engineering<br>LOS - Level of Service - A,B,C or D (Accuracy) |           |
| <b>POWER:</b>  |           |
| Existing Power Pole  | ●         |
| Proposed Power Pole  | ○         |
| Existing Joint Use Pole  | ●         |
| Proposed Joint Use Pole  | ○         |
| Power Manhole  | ⊕         |
| Power Line Tower   | ⊕         |
| Power Transformer  | ⊕         |
| U/G Power Cable Hand Hole  | ⊕         |
| H-Frame Pole   | —         |
| U/G Power Line Test Hole (SUE - LOS A)*  | ⊕         |
| U/G Power Line (SUE - LOS B)*  | —P---     |
| U/G Power Line (SUE - LOS C)*  | —P---     |
| U/G Power Line (SUE - LOS D)*  | —P---     |
| <b>TELEPHONE:</b>  |           |
| Existing Telephone Pole  | ●         |
| Proposed Telephone Pole  | ○         |
| Telephone Manhole  | ⊕         |
| Telephone Pedestal   | ⊕         |
| Telephone Cell Tower   | ⊕         |
| U/G Telephone Cable Hand Hole  | ⊕         |
| U/G Telephone Test Hole (SUE - LOS A)*   | ⊕         |
| U/G Telephone Cable (SUE - LOS B)*   | —T---     |
| U/G Telephone Cable (SUE - LOS C)*   | —T---     |
| U/G Telephone Cable (SUE - LOS D)*   | —T---     |
| U/G Telephone Conduit (SUE - LOS B)*   | —TC---    |
| U/G Telephone Conduit (SUE - LOS C)*   | —TC---    |
| U/G Telephone Conduit (SUE - LOS D)*   | —TC---    |
| U/G Fiber Optics Cable (SUE - LOS B)*  | —TFO---   |
| U/G Fiber Optics Cable (SUE - LOS C)*  | —TFO---   |
| U/G Fiber Optics Cable (SUE - LOS D)*  | —TFO---   |

### WATER:

|   |                      |
|---|----------------------|
| Water Manhole                               | ⊕                    |
| Water Meter                                 | ○                    |
| Water Valve                                 | ⊕                    |
| Water Hydrant                               | ⊕                    |
| U/G Water Line Test Hole (SUE - LOS A)*     | ⊕                    |
| U/G Water Line (SUE - LOS B)*               | —                    |
| U/G Water Line (SUE - LOS C)*               | —                    |
| U/G Water Line (SUE - LOS D)*               | —                    |
| Above Ground Water Line                     | —A/G Water—          |
| <b>TV:</b>                                  |                      |
| TV Pedestal                                 | ⊕                    |
| TV Tower                                    | ⊕                    |
| U/G TV Cable Hand Hole                      | ⊕                    |
| U/G TV Test Hole (SUE - LOS A)*             | ⊕                    |
| U/G TV Cable (SUE - LOS B)*                 | —TV---               |
| U/G TV Cable (SUE - LOS C)*                 | —TV---               |
| U/G TV Cable (SUE - LOS D)*                 | —TV---               |
| U/G Fiber Optic Cable (SUE - LOS B)*        | —TV FO---            |
| U/G Fiber Optic Cable (SUE - LOS C)*        | —TV FO---            |
| U/G Fiber Optic Cable (SUE - LOS D)*        | —TV FO---            |
| <b>GAS:</b>                                 |                      |
| Gas Valve                                   | ◇                    |
| Gas Meter                                   | ⊕                    |
| U/G Gas Line Test Hole (SUE - LOS A)*       | ⊕                    |
| U/G Gas Line (SUE - LOS B)*                 | —G---                |
| U/G Gas Line (SUE - LOS C)*                 | —G---                |
| U/G Gas Line (SUE - LOS D)*                 | —G---                |
| Above Ground Gas Line                       | —A/G Gas—            |
| <b>SANITARY SEWER:</b>                      |                      |
| Sanitary Sewer Manhole                      | ⊕                    |
| Sanitary Sewer Cleanout                     | ⊕                    |
| U/G Sanitary Sewer Line                     | —SS---               |
| Above Ground Sanitary Sewer                 | —A/G Sanitary Sewer— |
| SS Force Main Line Test Hole (SUE - LOS A)* | ⊕                    |
| SS Force Main Line (SUE - LOS B)*           | —FSS---              |
| SS Force Main Line (SUE - LOS C)*           | —FSS---              |
| SS Force Main Line (SUE - LOS D)*           | —FSS---              |
| <b>MISCELLANEOUS:</b>                       |                      |
| Utility Pole                                | ●                    |
| Utility Pole with Base                      | □                    |
| Utility Located Object                      | ○                    |
| Utility Traffic Signal Box                  | ⊕                    |
| Utility Unknown U/G Line (SUE - LOS B)*     | —ZUL---              |
| U/G Tank; Water, Gas, Oil                   | □                    |
| Underground Storage Tank, Approx. Loc.      | ⊕                    |
| A/G Tank; Water, Gas, Oil                   | □                    |
| Geoenvironmental Boring                     | ⊕                    |
| Abandoned According to Utility Records      | AATUR                |
| End of Information                          | E.O.I.               |







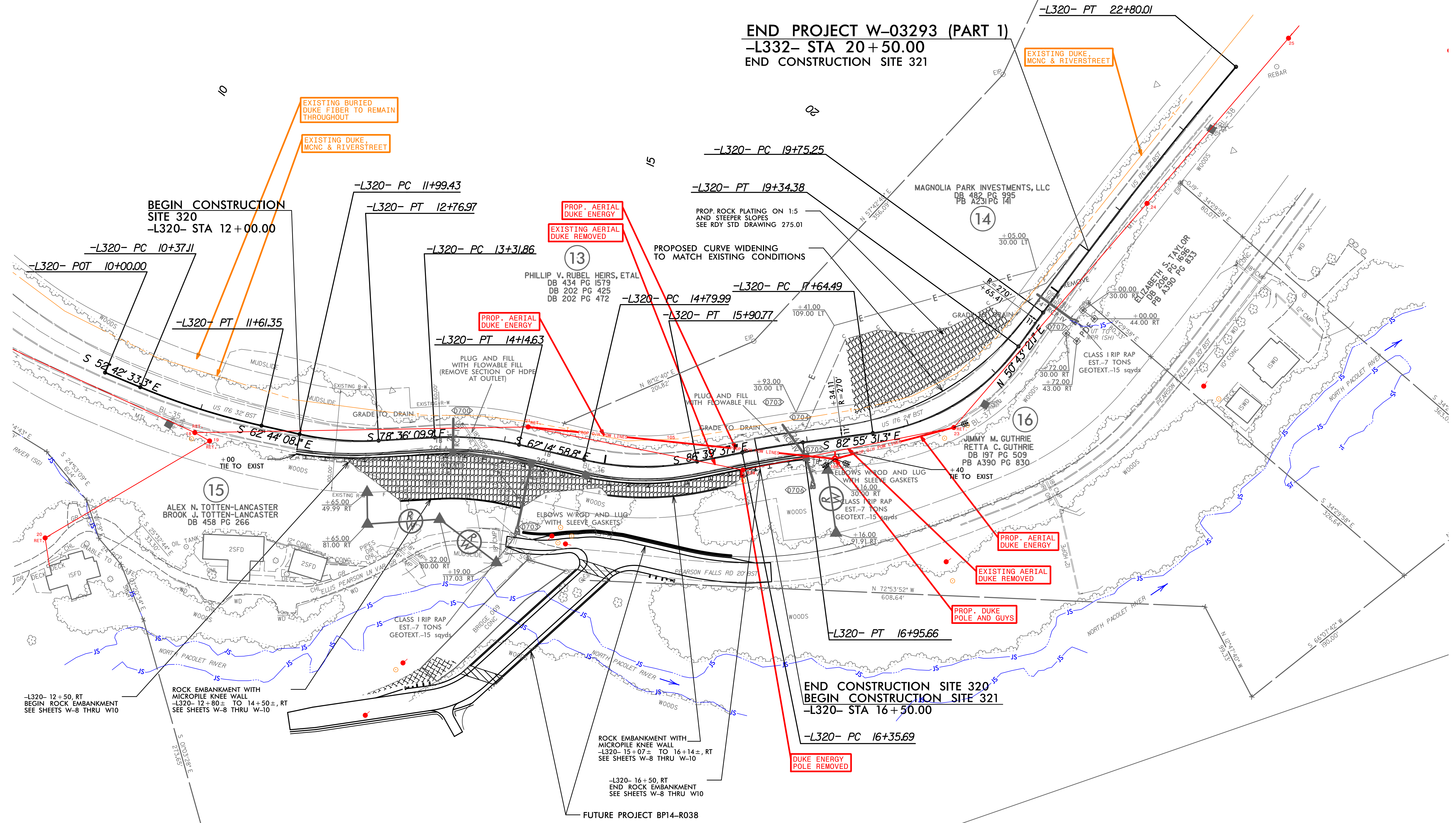
-L320- CURVE DATA

|  |  |  |   |  |   |   |
|--|--|--|---|--|---|---|
| PI Sta 10+99.39<br>Δ = 10° 01' 34.8" (LT)<br>D = 8' 04' 11.4"<br>L = 124.24'<br>T = 62.28'<br>R = 710.00'<br>SE = EXIST. | PI Sta 12+38.45<br>Δ = 15° 52' 01.8" (LT)<br>D = 20' 27' 46.0"<br>L = 77.54'<br>T = 39.02'<br>R = 280.00'<br>SE = EXIST. | PI Sta 13+73.53<br>Δ = 16° 21' 11" (RT)<br>D = 19' 45' 25.8"<br>L = 82.77'<br>T = 41.67'<br>R = 260.00'<br>SE = EXIST. | PI Sta 15+36.23<br>Δ = 24° 24' 38.2" (LT)<br>D = 22' 02' 12.6"<br>L = 110.77'<br>T = 56.24'<br>R = 260.00'<br>SE = EXIST. | PI Sta 16+65.69<br>Δ = 3° 44' 05.8" (RT)<br>D = 6' 13' 40.1"<br>L = 59.97'<br>T = 30.00'<br>R = 920.00'<br>SE = EXIST. | PI Sta 18+54.39<br>Δ = 46° 21' 07.6" (LT)<br>D = 27' 17' 01.3"<br>L = 169.89'<br>T = 89.90'<br>R = 210.00'<br>SE = EXIST. | PI Sta 21+27.70<br>Δ = 4° 06' 20.2" (RT)<br>D = 1' 20' 49.9"<br>L = 304.75'<br>T = 152.44'<br>R = 4253.00'<br>SE = EXIST. |
|--|--|--|---|--|---|---|

UTILITIES BY OTHERS

ALL PROPOSED UTILITY WORK SHOWN ON THIS SHEET WILL BE DONE BY OTHERS. NO PAYMENT WILL BE MADE TO THE CONTRACTOR FOR PROPOSED UTILITY WORK SHOWN ON THIS SHEET.

SITE 320 WBS# 18314.1075029  
SITE 321 WBS# 18314.1075030



5/14/99  
#1  
#2  
#3  
#4  
#5  
#6  
#7  
#8  
#9  
#10  
#11  
#12  
#13  
#14  
#15  
#16  
#17  
#18  
#19  
#20  
#21  
#22  
#23  
#24  
#25  
#26  
#27  
#28  
#29  
#30  
#31  
#32  
#33  
#34  
#35  
#36  
#37  
#38  
#39  
#40  
#41  
#42  
#43  
#44  
#45  
#46  
#47  
#48  
#49  
#50  
#51  
#52  
#53  
#54  
#55  
#56  
#57  
#58  
#59  
#60  
#61  
#62  
#63  
#64  
#65  
#66  
#67  
#68  
#69  
#70  
#71  
#72  
#73  
#74  
#75  
#76  
#77  
#78  
#79  
#80  
#81  
#82  
#83  
#84  
#85  
#86  
#87  
#88  
#89  
#90  
#91  
#92  
#93  
#94  
#95  
#96  
#97  
#98  
#99  
#100