

09.08/99

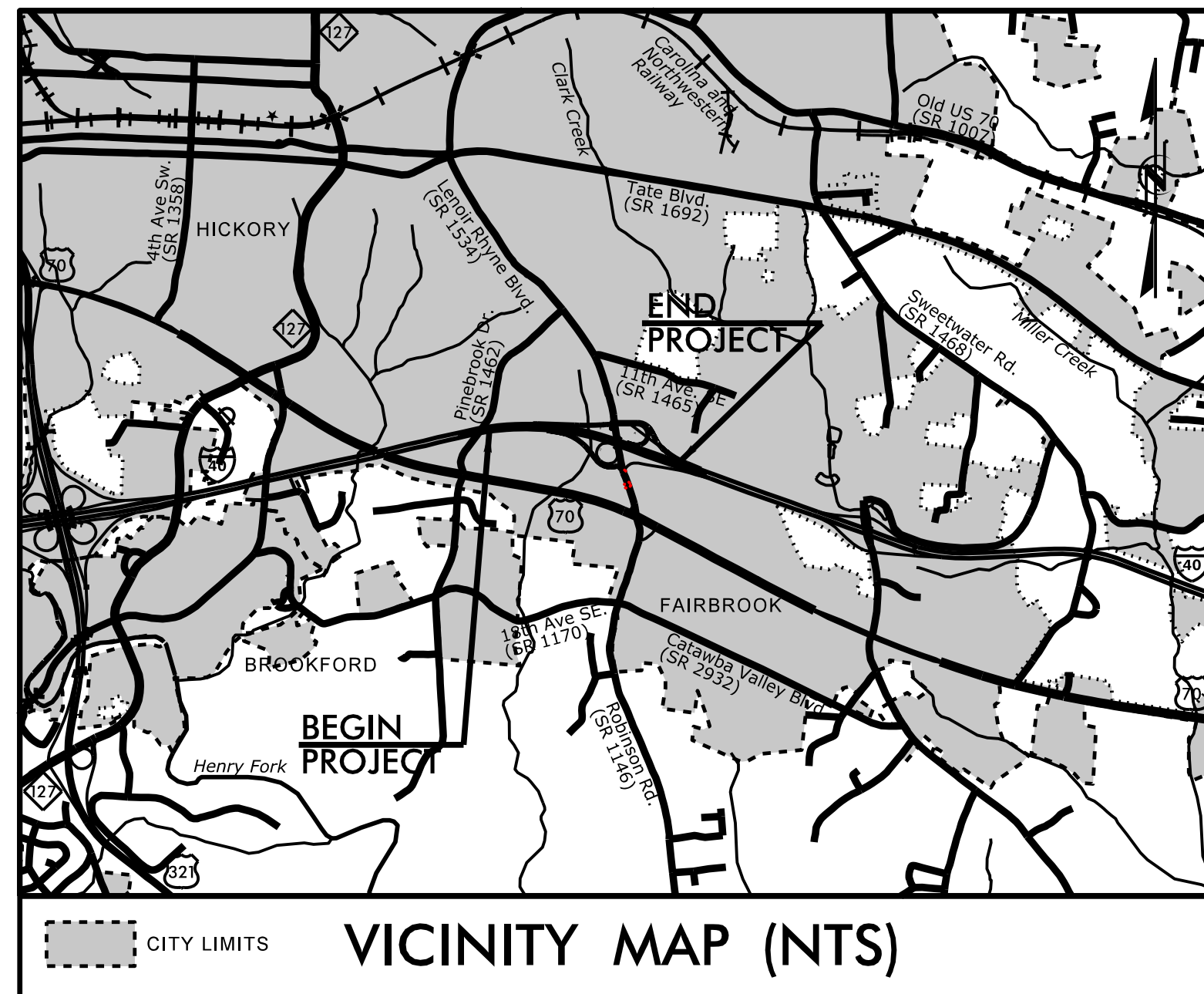
STATE OF NORTH CAROLINA DIVISION OF HIGHWAYS

T.I.P. NO.	SHEET NO.
I-5716	UO-1

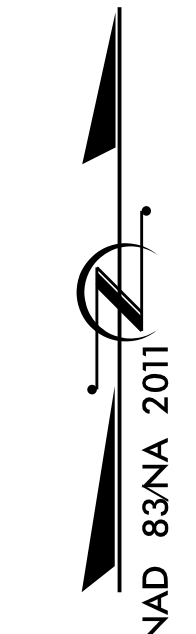
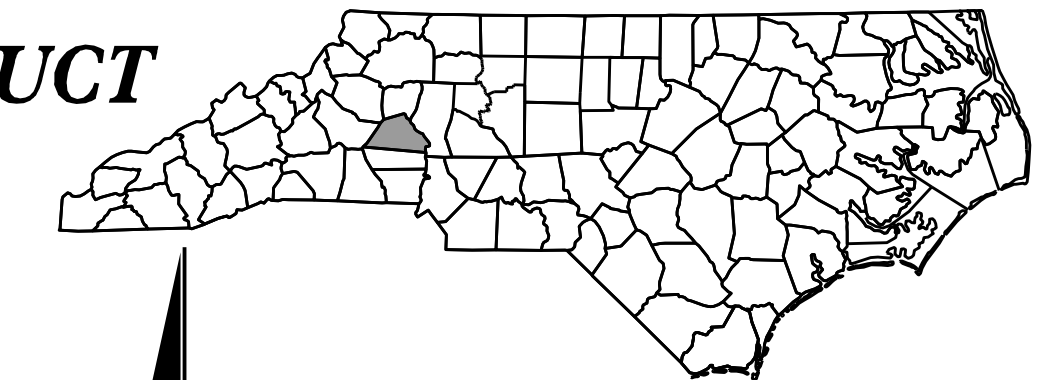
UTILITIES BY OTHERS PLANS CATAWBA COUNTY

NOTE:
ALL UTILITY WORK SHOWN ON THIS SHEET WILL BE DONE BY OTHERS. NO PAYMENT WILL BE MADE TO THE CONTRACTOR FOR UTILITY WORK SHOWN ON THIS SHEET.

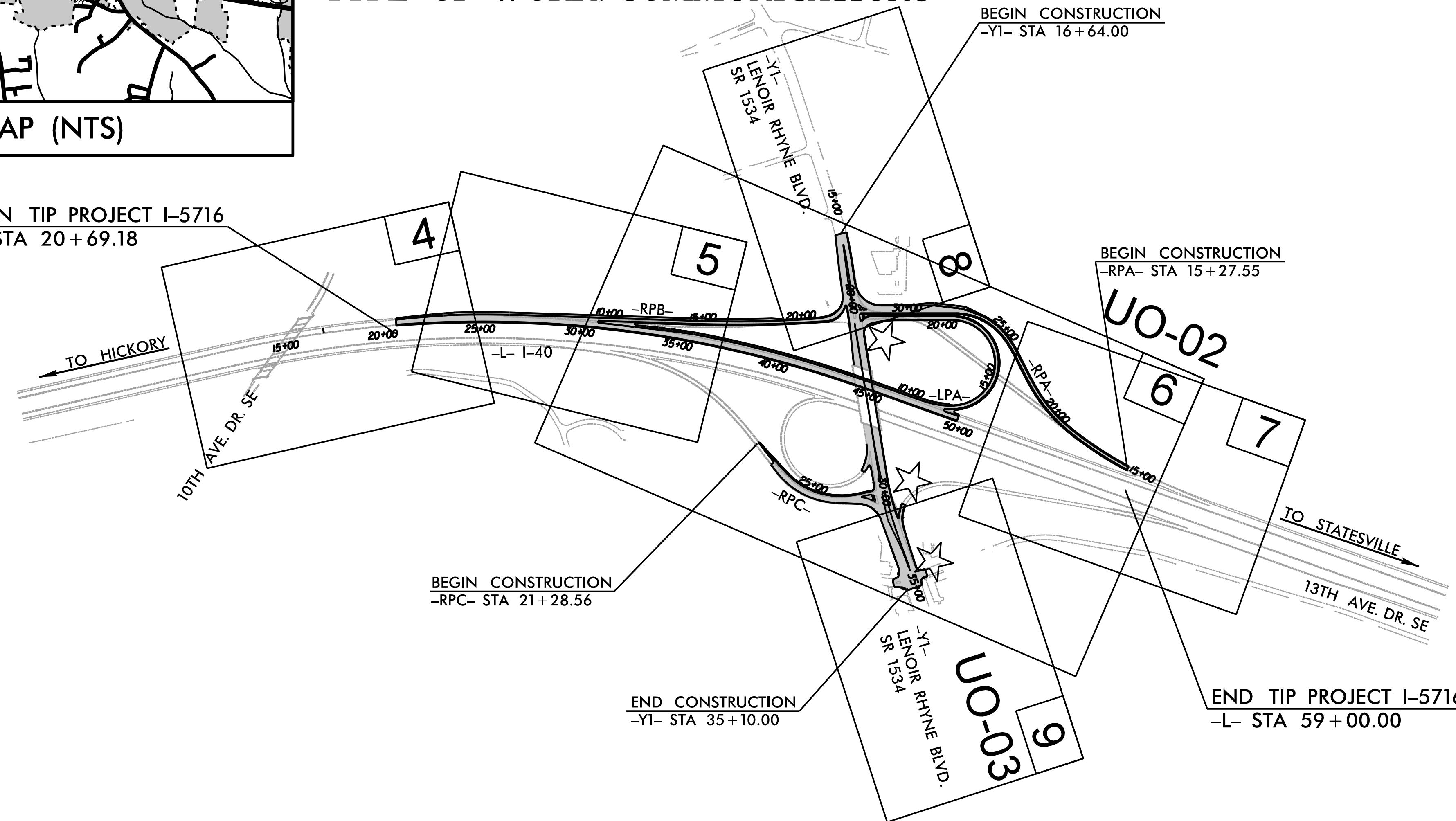
TIP PROJECT: I-5716



LOCATION: I-40 AT SR 1007 (LENOIR RHYNE BOULEVARD) CONSTRUCT INTERCHANGE IMPROVEMENTS
TYPE OF WORK: COMMUNICATIONS



BEGIN TIP PROJECT I-5716
-L- STA 20+69.18



BEGIN CONSTRUCTION
-RPA- STA 15+27.55

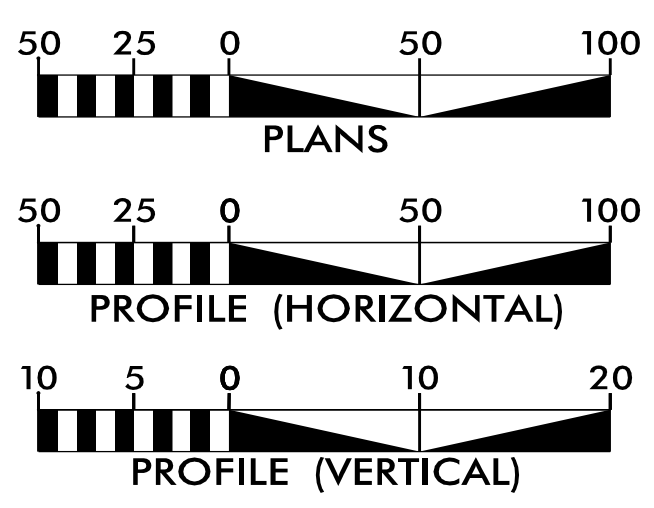
BEGIN CONSTRUCTION
-RPC- STA 21+28.56

END CONSTRUCTION
-Y1- STA 35+10.00

END TIP PROJECT I-5716
-L- STA 59+00.00

CONTRACT: C205195

GRAPHIC SCALES



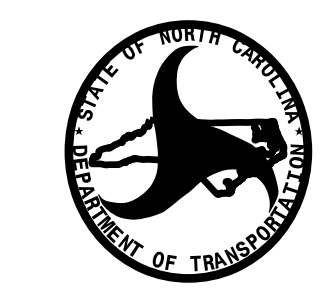
INDEX OF SHEETS

SHEET NO.:	DESCRIPTION:
UO-1	TITLE SHEET
UO-02 THRU UO-03	UBO PLAN SHEETS

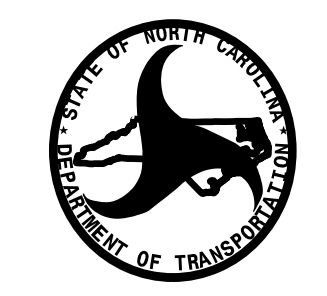
UTILITY OWNERS WITH CONFLICTS

- (A) COMMUNICATIONS - BRIGHTSPEED
- (B) COMMUNICATIONS - METRONET

PREPARED IN THE OFFICE OF:



Freddie Bunn
UTILITY PROJECT MANAGER



DIVISION OF HIGHWAYS
UTILITIES UNIT
1555 MAIL SERVICES CENTER
RALEIGH, NC 27699-1555
PHONE (919) 707-6690
FAX (919) 250-4151

Don Hampton
UTILITIES REGIONAL ENGINEER

JT Yoon, PE
UTILITIES ENGINEER

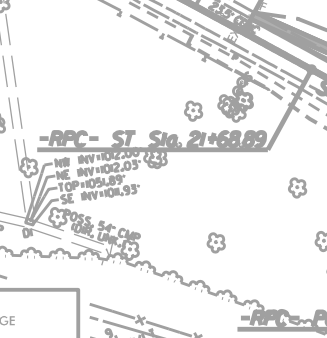
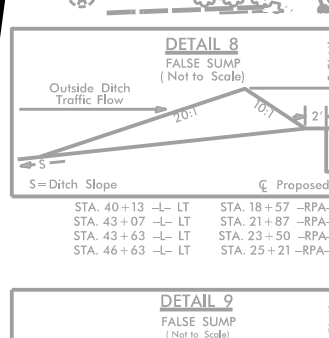
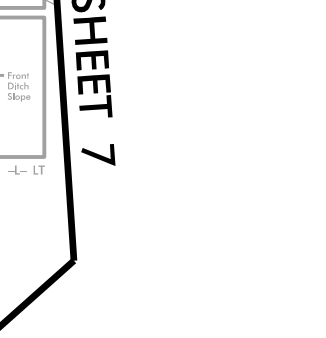
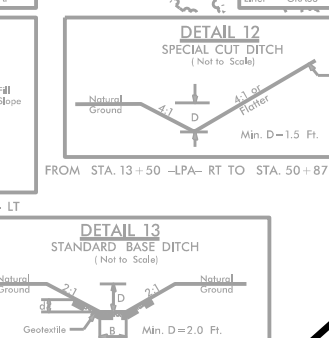
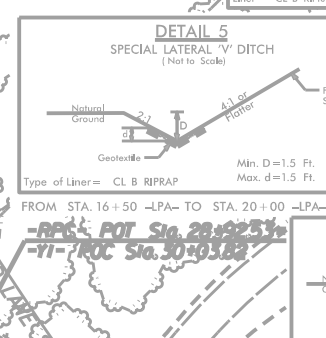
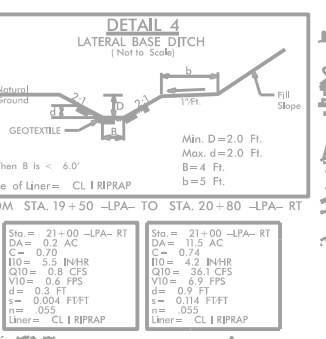
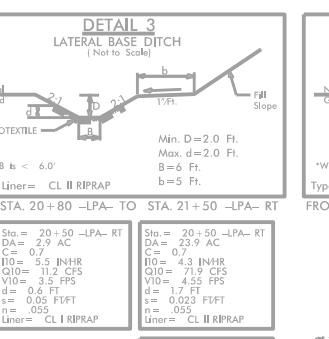
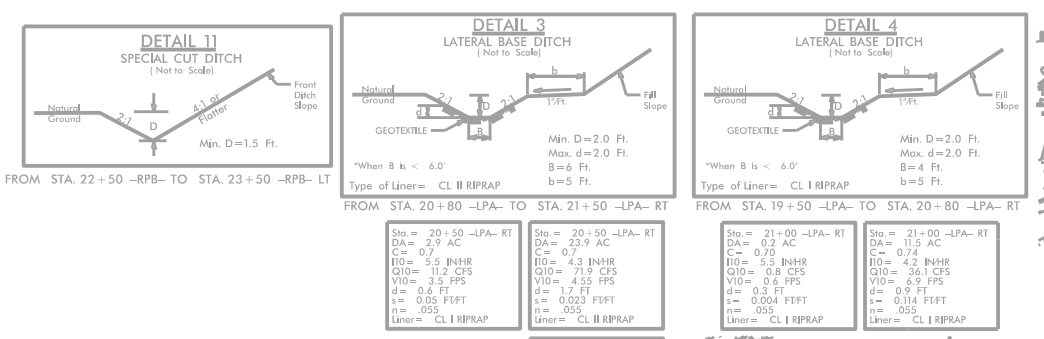
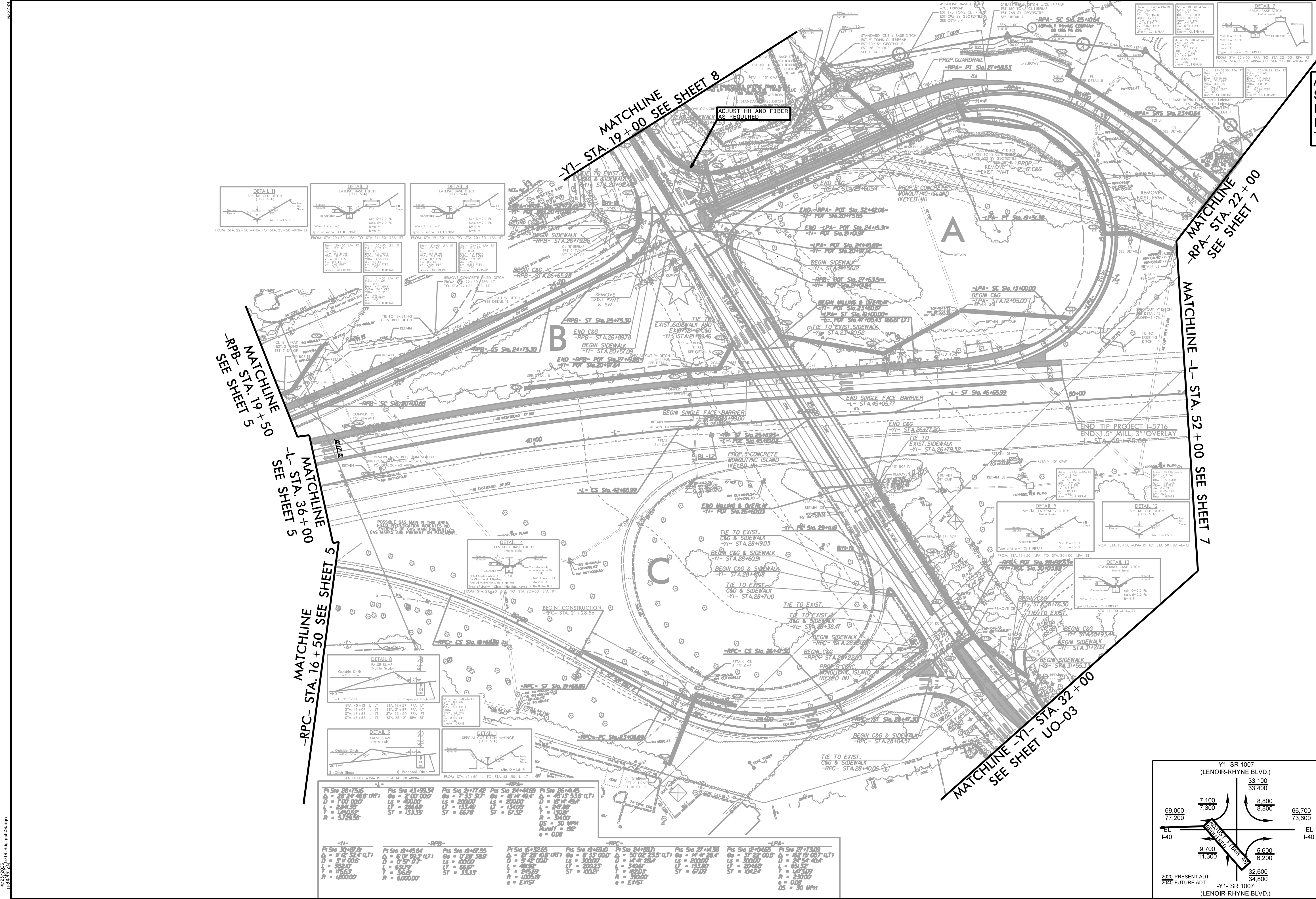
Dayton Martin
UTILITIES AREA COORDINATOR

Freddie Bunn
UTILITIES COORDINATOR

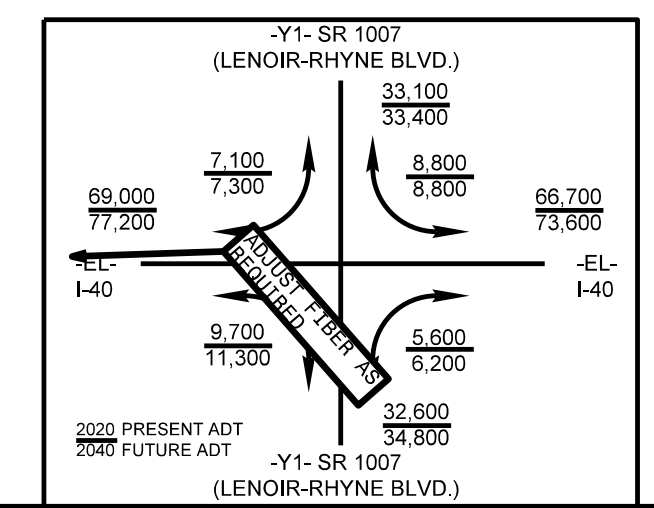
4/23/2026
RDY\15716_Rdy_tsh.dgn
11:35:45 AM

UTILITIES BY OTHERS

ALL PROPOSED UTILITY WORK SHOWN ON THIS SHEET WILL BE DONE BY OTHERS. NO PAYMENT WILL BE MADE TO THE CONTRACTOR FOR PROPOSED UTILITY WORK SHOWN ON THIS SHEET.



-YI- Pts Sta 28+75.50 Δ = 11° 32' 48" (LT) D = 110.000' L = 284.50' T = 176.53' R = 1200.00'	-RPC- Pts Sta 43+95.34 Δ = 0° 00' 00" (RT) D = 0.000' L = 0.000' T = 0.000' R = 0.00000'	-RPC- Pts Sta 43+95.34 Δ = 0° 00' 00" (RT) D = 0.000' L = 0.000' T = 0.000' R = 0.00000'	-RPC- Pts Sta 43+95.34 Δ = 0° 00' 00" (RT) D = 0.000' L = 0.000' T = 0.000' R = 0.00000'	-RPC- Pts Sta 43+95.34 Δ = 0° 00' 00" (RT) D = 0.000' L = 0.000' T = 0.000' R = 0.00000'	-RPC- Pts Sta 43+95.34 Δ = 0° 00' 00" (RT) D = 0.000' L = 0.000' T = 0.000' R = 0.00000'	-RPC- Pts Sta 43+95.34 Δ = 0° 00' 00" (RT) D = 0.000' L = 0.000' T = 0.000' R = 0.00000'	-RPC- Pts Sta 43+95.34 Δ = 0° 00' 00" (RT) D = 0.000' L = 0.000' T = 0.000' R = 0.00000'	-RPC- Pts Sta 43+95.34 Δ = 0° 00' 00" (RT) D = 0.000' L = 0.000' T = 0.000' R = 0.00000'	-RPC- Pts Sta 43+95.34 Δ = 0° 00' 00" (RT) D = 0.000' L = 0.000' T = 0.000' R = 0.00000'	-RPC- Pts Sta 43+95.34 Δ = 0° 00' 00" (RT) D = 0.000' L = 0.000' T = 0.000' R = 0.00000'	-RPC- Pts Sta 43+95.34 Δ = 0° 00' 00" (RT) D = 0.000' L = 0.000' T = 0.000' R = 0.00000'
---	---	---	---	---	---	---	---	---	---	---	---



LOCATION:	COUNTY:
DATE:	DATE:

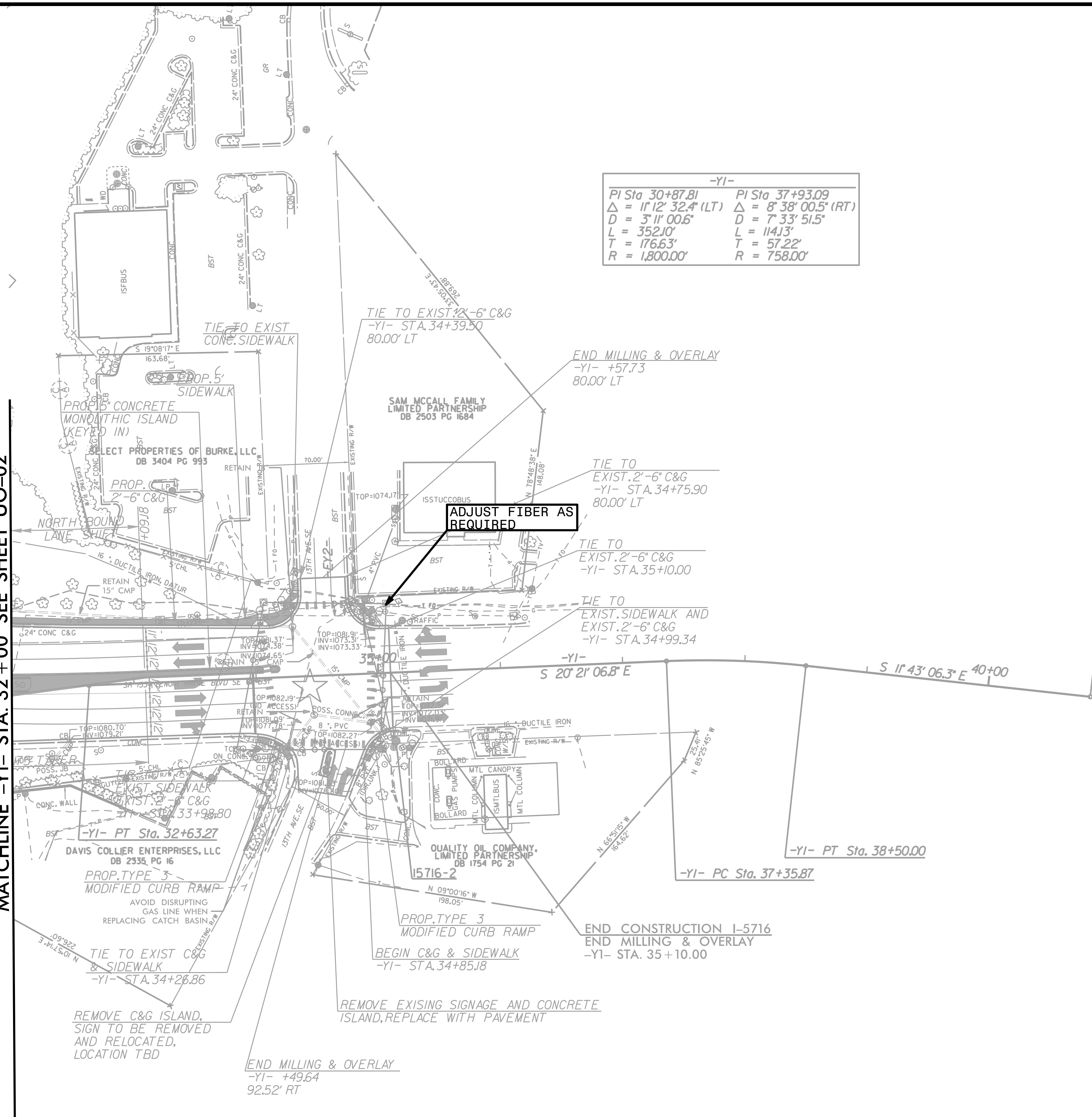
UTILITIES BY OTHERS

ALL PROPOSED UTILITY WORK SHOWN ON THIS SHEET WILL BE DONE BY OTHERS. NO PAYMENT WILL BE MADE TO THE CONTRACTOR FOR PROPOSED UTILITY WORK SHOWN ON THIS SHEET.

NAD 83/NA 2011

-YI-	
PI Sta 30+87.81	PI Sta 37+93.09
$\Delta = 11' 12' 32.4" (LT)$	$\Delta = 8' 38' 00.5" (RT)$
$D = 3' 11' 00.6"$	$D = 7' 33' 51.5"$
$L = 352.10'$	$L = 114.13'$
$T = 176.63'$	$T = 57.22'$
$R = 1,800.00'$	$R = 758.00'$

MATCHLINE -YI- STA. 32+00 SEE SHEET UO-02



ADJUST FIBER AS REQUIRED

-YI- POT Sta. 40+83.96

I5716-1

-YI- PT Sta. 32+63.27
DAVIS COLLIER ENTERPRISES, LLC
DB 2935 PG 16

I5716-2
QUALITY OIL COMPANY, LIMITED PARTNERSHIP
DB 1754 PG 21

-YI- PT Sta. 38+50.00

-YI- PC Sta. 37+35.87

END CONSTRUCTION I-5716
END MILLING & OVERLAY
-YI- STA. 35+10.00

REMOVE EXISTING SIGNAGE AND CONCRETE ISLAND, REPLACE WITH PAVEMENT

END MILLING & OVERLAY
-YI- +49.64
92.52' RT

REMOVE C&G ISLAND, SIGN TO BE REMOVED AND RELOCATED, LOCATION TBD

TIE TO EXIST C&G & SIDEWALK
-YI- STA. 34+26.86

PROP. TYPE 3 MODIFIED CURB RAMP
BEGIN C&G & SIDEWALK
-YI- STA. 34+85.18

PROP. TYPE 3 MODIFIED CURB RAMP
AVOID DISRUPTING GAS LINE WHEN REPLACING CATCH BASIN

EXIST. SIDEWALK
-YI- STA. 33+98.80

-YI- S 20' 21' 06.8" E

S 11' 43' 06.3" E 40+00