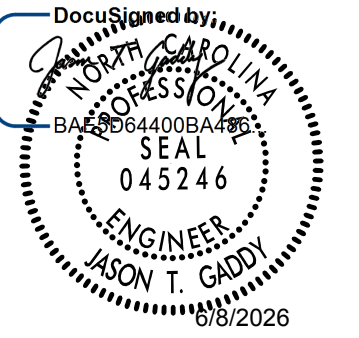
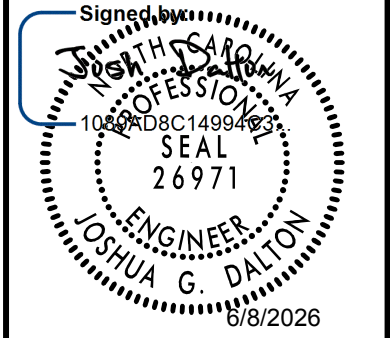
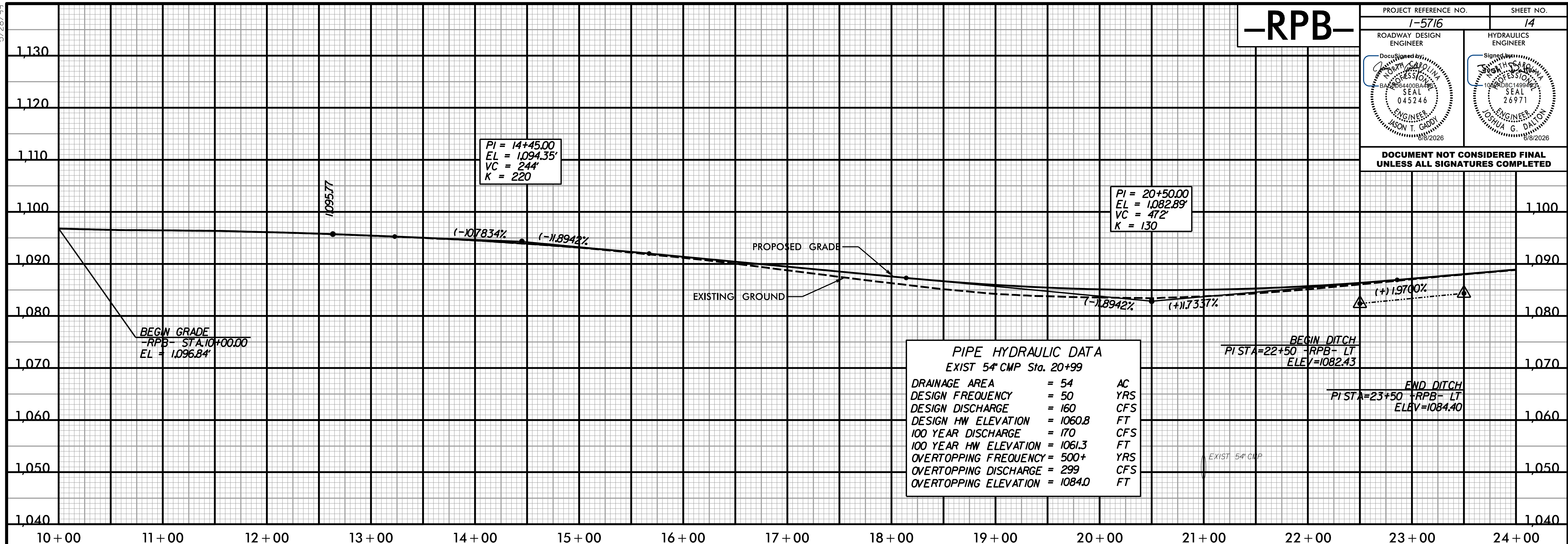


5/26/99

-RPB-

PROJECT REFERENCE NO. 1-5716	SHEET NO. 14
ROADWAY DESIGN ENGINEER DocuSign by 	HYDRAULICS ENGINEER DocuSign by 

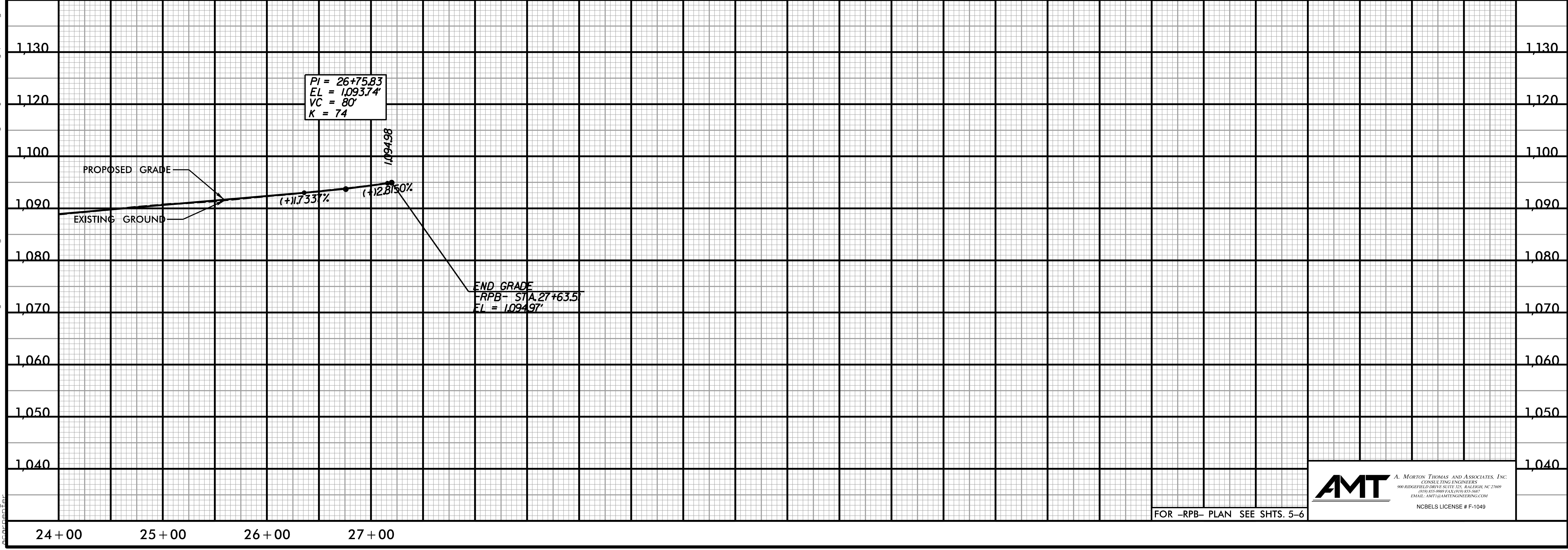
**DOCUMENT NOT CONSIDERED FINAL
UNLESS ALL SIGNATURES COMPLETED**



PIPE HYDRAULIC DATA
EXIST 54" CMP Sta. 20+99

DRAINAGE AREA	= 54	AC
DESIGN FREQUENCY	= 50	YRS
DESIGN DISCHARGE	= 160	CFS
DESIGN HW ELEVATION	= 1060.8	FT
100 YEAR DISCHARGE	= 170	CFS
100 YEAR HW ELEVATION	= 1061.3	FT
OVERTOPPING FREQUENCY	= 500+	YRS
OVERTOPPING DISCHARGE	= 299	CFS
OVERTOPPING ELEVATION	= 1084.0	FT

4/13/2026 11:14:56 AM - NCDOT - I-5716 I-40 Lenoir-Rhine Interchange V05-CAD\15716\Roadway\Proj\15716_Rdy_rfl14.dgn



AMT A. MORTON THOMAS AND ASSOCIATES, INC.
CONSULTING ENGINEERS
800 REDFIELDRIDGE DRIVE SUITE 225, RALEIGH, NC 27609
PH: 919-897-6300 FAX: 919-897-6301
EMAIL: AMT@AMTENGINEERING.COM
NCBELS LICENSE # F-1049

FOR -RPB- PLAN SEE SHTS. 5-6