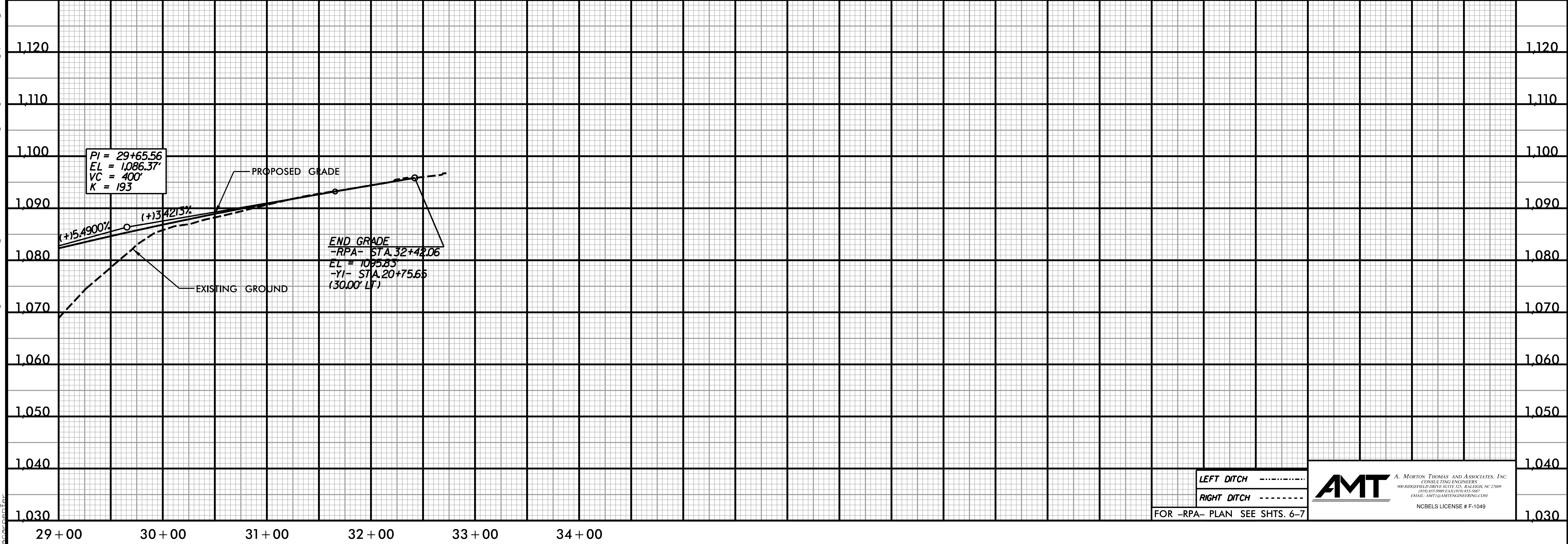
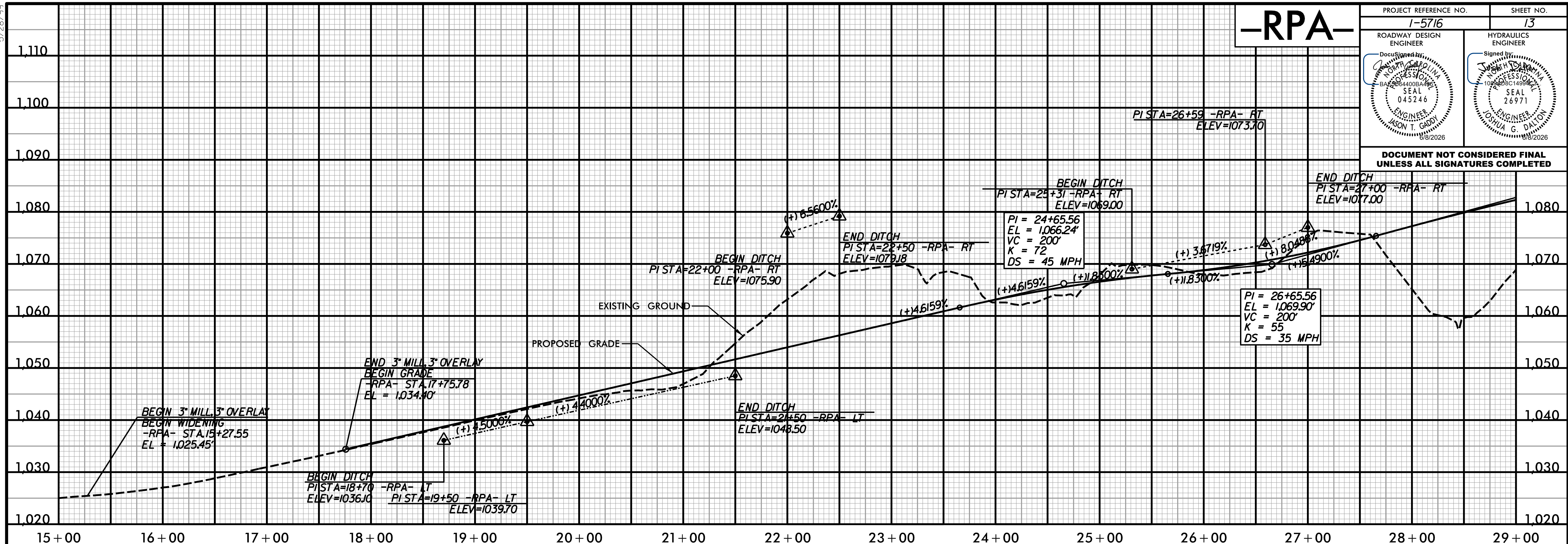


5/28/99

-RPA-

PROJECT REFERENCE NO. 1-5716	SHEET NO. 13
ROADWAY DESIGN ENGINEER JASON T. GAFFY SEAL 045246 08/2026	HYDRAULICS ENGINEER JOSHUA G. DALTON SEAL 26971 08/2026

DOCUMENT NOT CONSIDERED FINAL UNLESS ALL SIGNATURES COMPLETED



LEFT DITCH -----
RIGHT DITCH -----
FOR -RPA- PLAN SEE SHTS. 6-7

AMT A. MORTON THOMAS AND ASSOCIATES, INC.
CONSULTING ENGINEERS
900 RIDGEFIELD DRIVE SUITE 225, RALEIGH, NC 27609
PH: 919-876-1500 FAX: 919-876-0807
EMAIL: AMT@AMTENGINEERING.COM
NCBELS LICENSE # F-1049

4/30/2026 11:4:568 - NCDOT- I-5716 I-40 Lenoir-Rhine Interchange\05-CAD\15716\Roadway\Proj\15716_Rdy_pfl13.dgn