

5/28/99

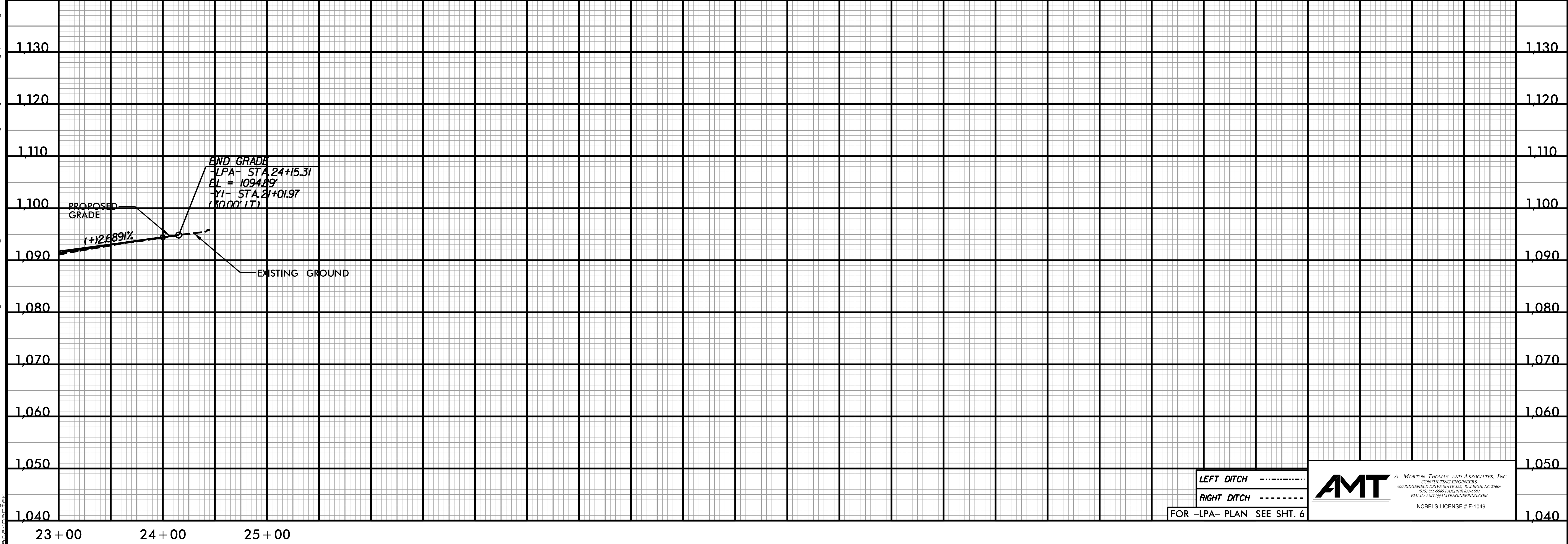
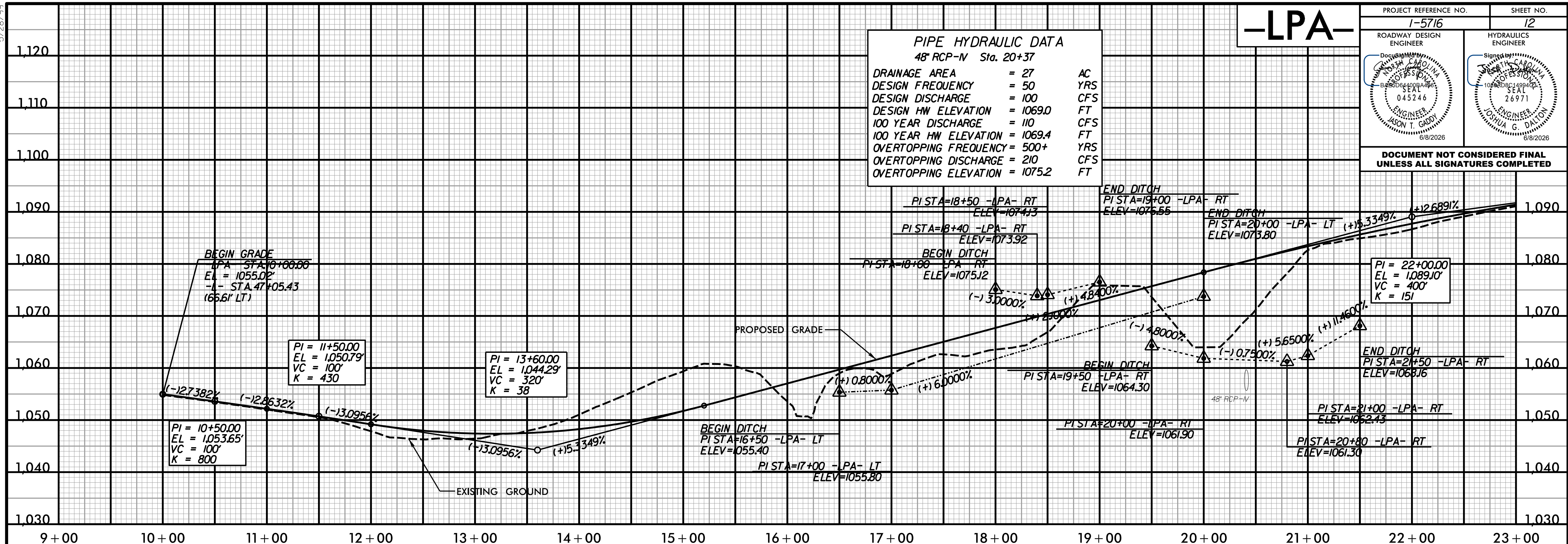
# -LPA-

PROJECT REFERENCE NO. <b>1-5716</b>	SHEET NO. <b>12</b>
ROADWAY DESIGN ENGINEER <i>(Signature)</i>	HYDRAULICS ENGINEER <i>(Signature)</i>

**PIPE HYDRAULIC DATA**  
48" RCP-N Sta. 20+37

DRAINAGE AREA	= 27	AC
DESIGN FREQUENCY	= 50	YRS
DESIGN DISCHARGE	= 100	CFS
DESIGN HW ELEVATION	= 1069.0	FT
100 YEAR DISCHARGE	= 110	CFS
100 YEAR HW ELEVATION	= 1069.4	FT
OVERTOPPING FREQUENCY	= 500+	YRS
OVERTOPPING DISCHARGE	= 210	CFS
OVERTOPPING ELEVATION	= 1075.2	FT

**DOCUMENT NOT CONSIDERED FINAL UNLESS ALL SIGNATURES COMPLETED**



4/13/2026 11:14:568 - NCDOT- I-5716 I-40 Lenoir-Rhyne Interchange\05-CAD\15716\Roadway\Proj\15716\_Rdy\_p112.dgn

**AMT** A. MORTON THOMAS AND ASSOCIATES, INC.  
CONSULTING ENGINEERS  
900 RIDGEFIELD DRIVE SUITE 125, RALEIGH, NC 27609  
PH: 919-876-1500 FAX: 919-876-0801  
EMAIL: AMT@AMTENGINEERING.COM  
NCBELS LICENSE # F-1049

LEFT DITCH .....  
RIGHT DITCH .....  
FOR -LPA- PLAN SEE SHT. 6