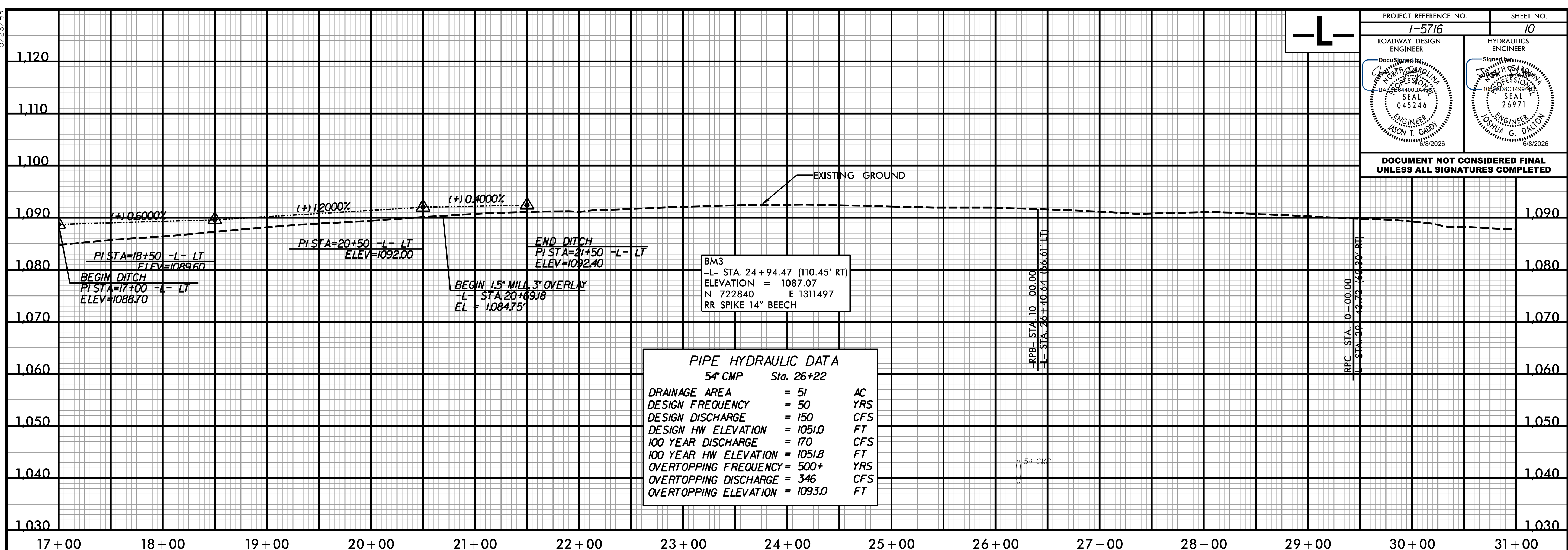


5/28/99

L

PROJECT REFERENCE NO. <b>1-5716</b>	SHEET NO. <b>10</b>
ROADWAY DESIGN ENGINEER JASON T. GADDY SEAL 045246 8/8/2026	HYDRAULICS ENGINEER JOSHUA G. DARTON SEAL 26971 6/8/2026

DOCUMENT NOT CONSIDERED FINAL UNLESS ALL SIGNATURES COMPLETED

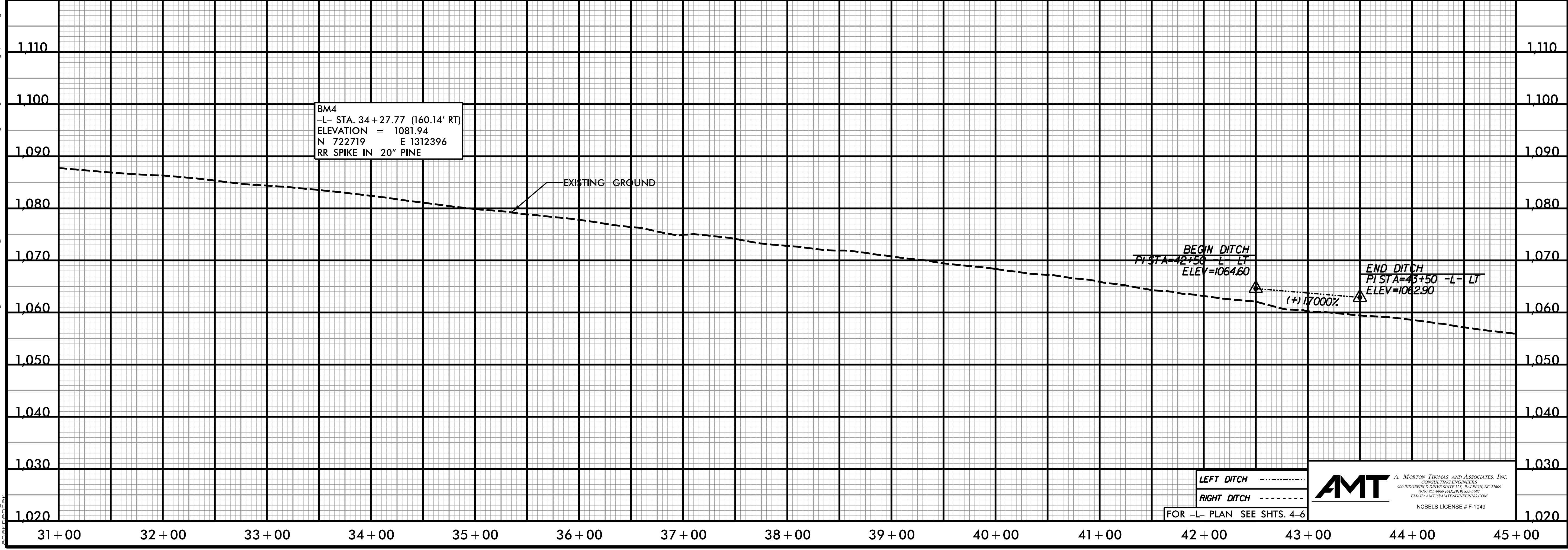


**PIPE HYDRAULIC DATA**  
5' CMP Sta. 26+22

DRAINAGE AREA	= 51	AC
DESIGN FREQUENCY	= 50	YRS
DESIGN DISCHARGE	= 150	CFS
DESIGN HW ELEVATION	= 1051.0	FT
100 YEAR DISCHARGE	= 170	CFS
100 YEAR HW ELEVATION	= 1051.8	FT
OVERTOPPING FREQUENCY	= 500+	YRS
OVERTOPPING DISCHARGE	= 346	CFS
OVERTOPPING ELEVATION	= 1093.0	FT

BM3  
-L- STA. 24+94.47 (110.45' RT)  
ELEVATION = 1087.07  
N 722840 E 1311497  
RR SPIKE 14" BEECH

BM4  
-L- STA. 34+27.77 (160.14' RT)  
ELEVATION = 1081.94  
N 722719 E 1312396  
RR SPIKE IN 20" PINE



LEFT DITCH .....  
RIGHT DITCH .....  
FOR -L- PLAN SEE SHTS. 4-6

**AMT** A. MORTON THOMAS AND ASSOCIATES, INC.  
CONSULTING ENGINEERS  
900 RIDGEFIELD DRIVE SUITE 225, RALEIGH, NC 27609  
PH: 919-997-6300 FAX: 919-997-6302  
EMAIL: AMT@AMTENGINEERING.COM  
NCBELS LICENSE # F-1049

4/13/2026 11:14:568 - NCDOT- I-5716 I-40 Lenoir-Rhyne Interchange\05-CAD\15716-Roadway\Proj\15716\_Rdy\_pl10.dgn