
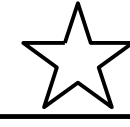
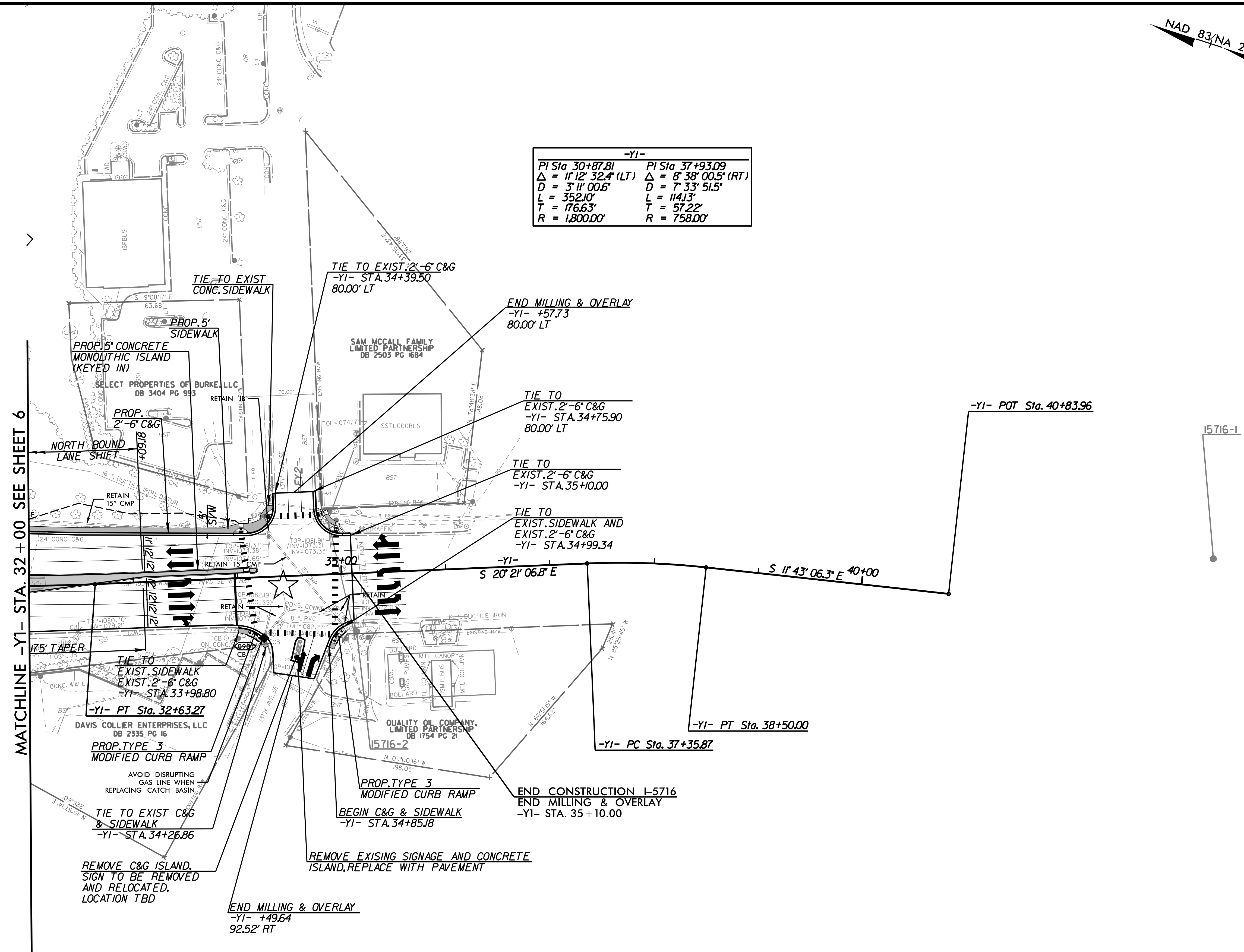


8/17/99

NAD 83/NA 2011

PROJECT REFERENCE NO. 1-5716	SHEET NO. 9
R/W SHEET NO.	
ROADWAY DESIGN ENGINEER <i>Jason T. Gaddy</i> SEAL 045246 6/8/2026	HYDRAULICS ENGINEER <i>Opalua G. Dalton</i> SEAL 26971 6/8/2026
DOCUMENT NOT CONSIDERED FINAL UNLESS ALL SIGNATURES COMPLETED	
 AMT <small>A. MORTON THOMAS AND ASSOCIATES, INC. CONSULTING ENGINEERS 900 RIDGEFIELD DRIVE, SUITE 325, RALEIGH, NC 27609 (919) 855-8888 FAX (919) 855-3885 EMAIL: AMT@AMTENGINEERING.COM NCBELS LICENSE # F-1049</small>	
FOR INTERSECTION DETAIL SEE SHT. 2B-2 FOR -YI- PROFILE SEE SHT. 16	
 SIGNAL UPGRADE	

-YI-	
PI Sta 30+87.81	PI Sta 37+93.09
$\Delta = 11' 12" 32.4" (LT)$	$\Delta = 8' 38" 00.5" (RT)$
D = 3' 11" 00.6"	D = 7' 33" 51.5"
L = 352.10'	L = 114.13'
T = 176.63'	T = 57.22'
R = 1,800.00'	R = 758.00'



MATCHLINE -YI- STA. 32 + 00 SEE SHEET 6

15716-1

15716-2

4/28/2026 11:45:56 - NCDOT- I-5716, I-40 Lenoir-Rhine Interchange V05-CAD\15716\Roadway\Proj\15716_Rdy_psh09.dgn